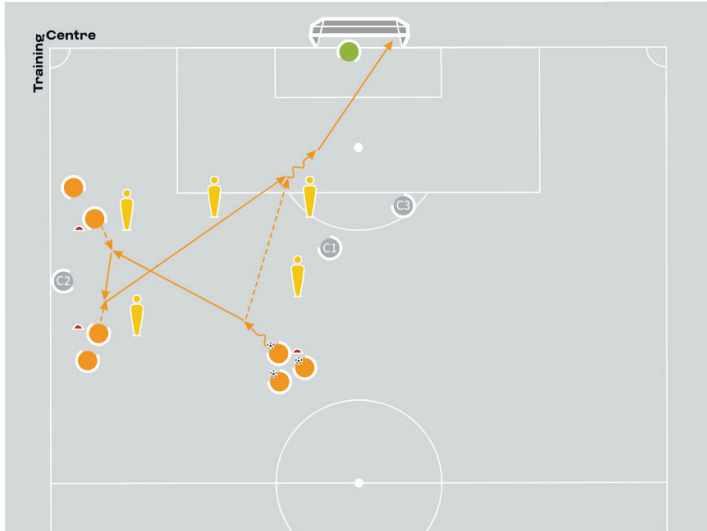
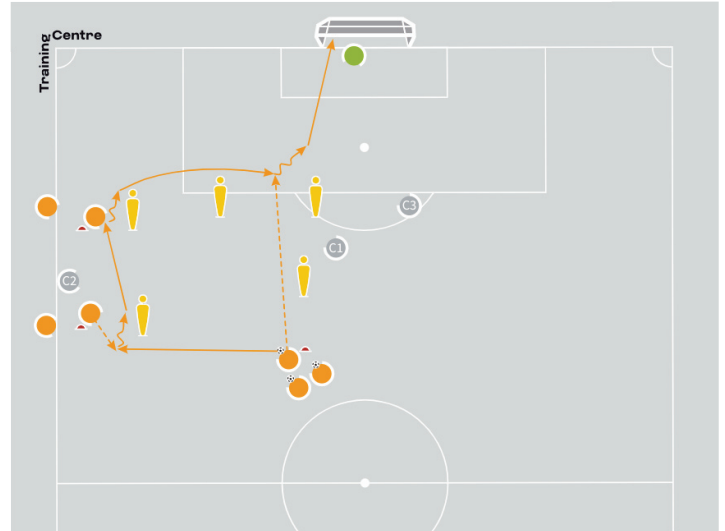


FIFA Talent Coach Programme

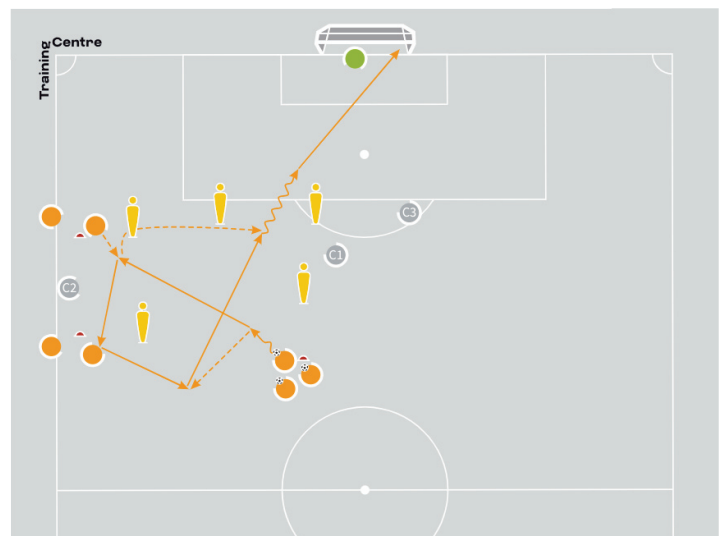
Finishing: 3-player combination play



Sequence 1



Sequence 2



Sequence 3

Organisation

- Use half of a full-size pitch.
- Place a full-size goal at 1 end of the exercise area.
- Position a goalkeeper in the full-size goal.
- Place a mannequin in each of the 5 positions displayed in the graphic above.
- Place a cone in each of the 3 positions displayed in the graphic above.
- Arrange 3 players at the cone positioned parallel to the point where the penalty arc intersects with the penalty area and give them a number of balls each. This is the midfielders' station.
- Place 3 players at the cone closest to the penalty area. This is the wingers' station.
- Position 1 player at the cone situated parallel to the cone closest to the penalty area. This is the full-backs' station.

Explanation

- Each of the following 3 passing sequences starts with the first player in the queue at the midfielders' station in possession.
- Once each passing sequence has been completed a number of times, the coach instructs the players to move onto the next sequence.
- Each of the passing circuits described below culminates in the final player in the sequence finishing on goal.
- Once each sequence has been performed a number of times, the coach asks the final player in the sequence (the player who finishes on goal) to avoid straying offside, with the offside line marked by the last line of mannequins.

Sequence 1

- The midfielder dribbles the ball a few metres before playing a pass into the winger, who makes a short run from their cone to a position in front of the mannequin closest to their cone in readiness to receive the pass. The winger plays a first-time lay-off to the full-back, who plays a first-time through-ball to the midfielder running in behind the mannequins.

- Once the sequence has been completed, the players rotate positions by moving to the station to which they passed the ball.

Sequence 2

- The midfielder passes to the full-back, who takes a touch before passing to the winger. The winger takes a touch and then plays a through-ball to the midfielder running in behind the mannequins.
- Once the sequence has been completed, the players rotate positions as follows:
 - The player at the midfielders' station moves to the wingers' station.
 - The player at the full-backs' station moves to the midfielders' station.
 - The player at the wingers' station moves to the full-backs' station.

Sequence 3

- The midfielder passes to the winger, who makes a short run from their cone to a position in front of the mannequin closest to their cone in readiness to receive the pass. The winger plays a first-time lay-off to the full-back, who passes to the midfielder. The midfielder plays a through-ball to the winger, who makes a run behind the mannequin closest to their station and in front of/behind the mannequin positioned closest to the corner of the penalty area.
- Once the sequence has been completed, the players rotate positions as follows:
 - The player at the midfielders' station moves to the full-backs' station.
 - The player at the full-backs' station moves to the wingers' station.
 - The player at the wingers' station moves to the midfielders' station.

Key coaching points

- Players making runs in behind should focus on the timing of their runs, while trying not to stray offside or to receive the ball in a stationary position.
- Scanning is crucial when timing a run to attack the space in behind to help players anticipate passes effectively.
- The pass in behind should be well-weighted and along the ground, enabling the player making a run in behind to take fewer touches or potentially facilitate a first-time shot on goal.

Roles of coaches

- First coach: leads the session and explains the three passing sequences to be performed before ensuring that they are correctly executed.
- Second coach: offers the players involved in the passing sequence on their side of the exercise area encouragement to make the right runs and to play good passes.
- Third coach: takes up a position inside the penalty arc. Receives balls from the goalkeeper and returns them to the midfield station while encouraging players with their finishing.