

**FIFA**

**U-20 WOMEN'S WORLD CUP  
COLOMBIA 2024**

**Canada 0 - 2 Brazil**

Group B - Match 28  
06 September 2024  
20:00 Kick Off  
El Campin Stadium

**POST MATCH SUMMARY REPORT**

# Match Summary - Teams

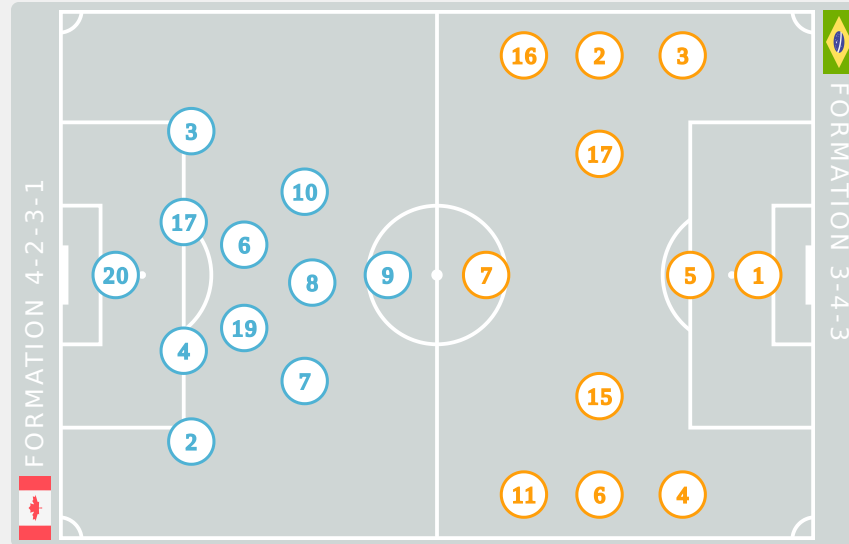


## STARTING

- 20 GK HENNING Noelle
- 2 DF ARCHIBALD Mya
- 3 DF OTTEY Ella
- 4 DF MARKESINI Zoe
- 6 MF HERNANDEZ GRAY Geneva
- 7 FW ALLEN Amanda ↓ 63'
- 8 MF JOURDE Florianne
- 9 FW ROSE Nyah ↓ 45'
- 10 MF SMITH Olivia ■ 71' ↓ 75'
- 17 DF OKEKE Janet
- 19 MF JOHNSON Anaya ■ 47' ↓ 63'

## SUBSTITUTES

- 1 GK FENWICK Faith
- 21 GK CORTES-BROWNE Sofia
- 5 DF LOGAN Clare
- 11 FW CHUKWU Annabelle ↑ 45'
- 12 MF WAITE Sadie
- 13 DF WATSON Renee ↑ 75'
- 14 FW PERRAULT Jaime
- 16 DF McBRIDE Ella ↑ 63'
- 18 MF BRIGGS Kayla ↑ 63'



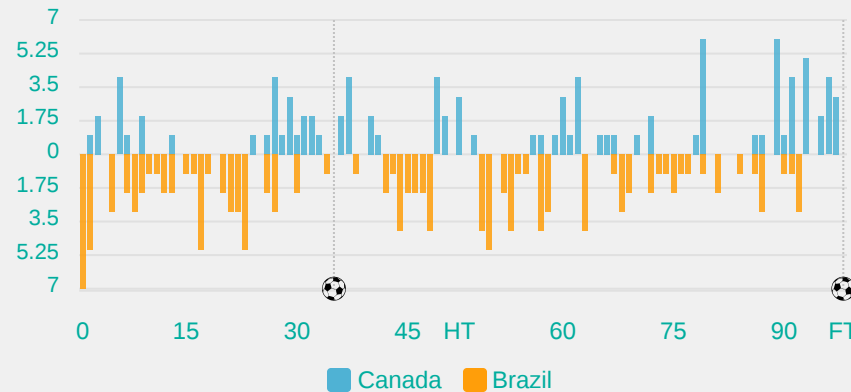
## STARTING

- RILLARY GK 1
- ↓ 90+1' GI FERNANDES DF 2
- GUTA DF 3
- CARLA DF 4
- REBECA DF 5
- ANA GUIMARAES DF 6
- ↓ 86' ⚽ 35' VENDITO FW 7
- DUDINHA FW 11
- ↓ 53' ■ 25' MARZIA MF 15
- ↓ 45' MILENA FW 16
- LARA MF 17

## SUBSTITUTES

- NANDA MAYRINK GK 12
- MARI GK 21
- MAIARA MF 8
- ↑ 45' PRISCILA FW 9
- ↑ 90+1' RAVENA DF 13
- DUDA MINEIRA DF 14
- ↑ 86' FERNANDA FW 18
- GISELE FW 19
- ⚽ 90+9' ↑ 53' CAROL MF 20

## Distribution in the Final Third



# Match Summary - Key Statistics



## Possession

| Total     | 41.1%  | 11.4% | 47.5% | Total     |
|-----------|--|-------|-------|-----------|
| 0         | Goals  |       |       | 2         |
| 14 (3)    | Attempts at Goal (On Target)                   |       |       | 21 (6)    |
| 338 (234) | Total Passes (Complete)                        |       |       | 372 (295) |
| 69 %      | Pass Completion %                              |       |       | 79 %      |
| 81        | Completed Line Breaks                          |       |       | 72        |
| 1         | Defensive Line Breaks                          |       |       | 4         |
| 88        | Receptions in the Final Third                  |       |       | 121       |
| 16        | Crosses  |       |       | 17        |
| 12        | Ball Progressions                              |       |       | 16        |
| 142 (43)  | Defensive Pressures Applied (Direct Pressures) |       |       | 202 (69)  |
| 60        | Forced Turnovers                               |       |       | 57        |
| 98        | Second Balls                                   |       |       | 87        |
| 106.1 km  | Total Distance Covered                         |       |       | 104.4 km  |
| 3.5 km    | Zone 4 - Low Speed Sprinting: 20-25 km/h       |       |       | 3.7 km    |



Canada

Phases of Play

Brazil



IN POSSESSION



OUT OF POSSESSION

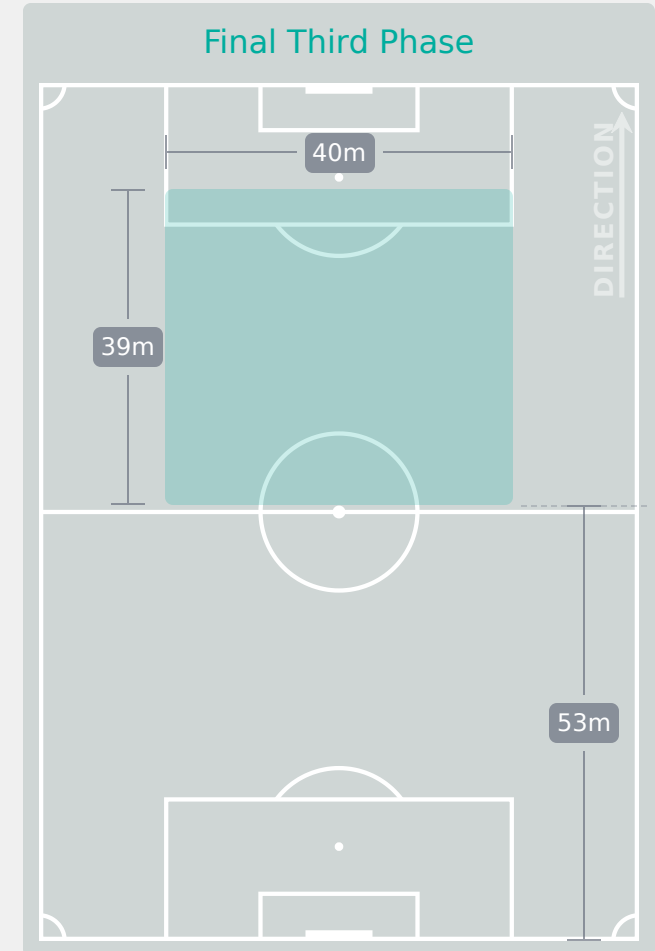
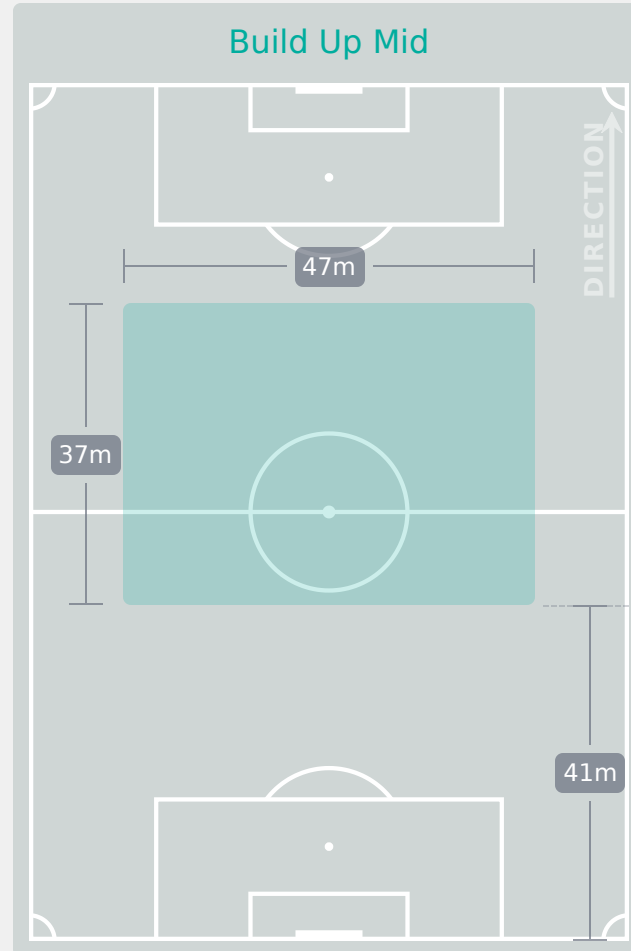
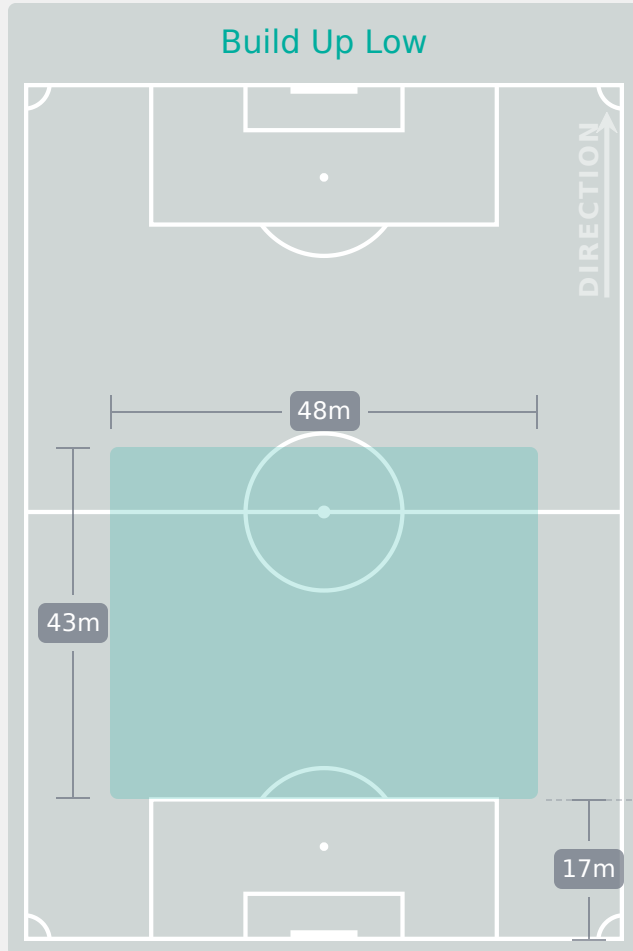




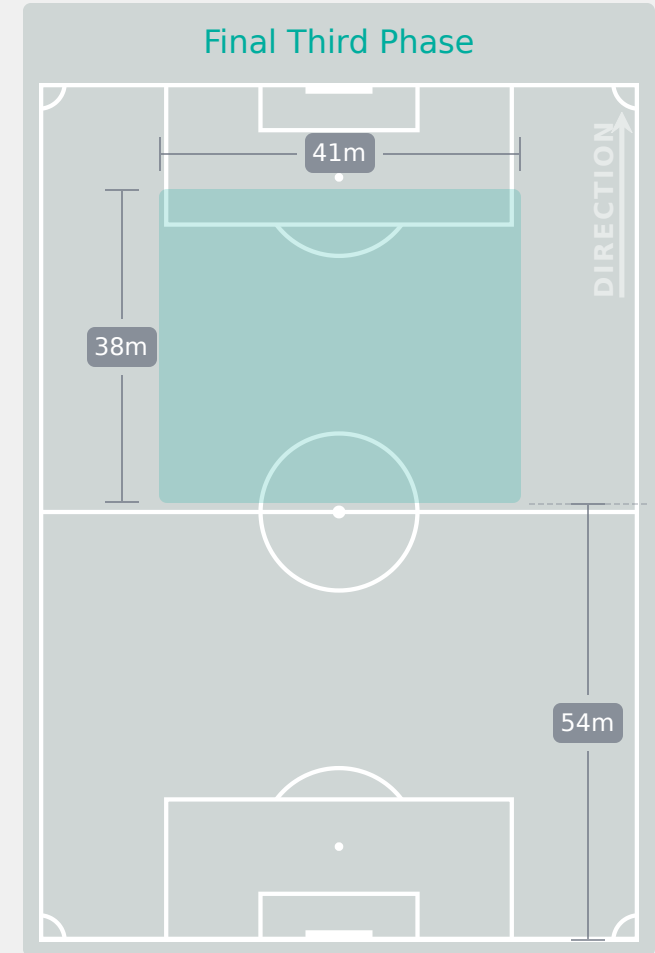
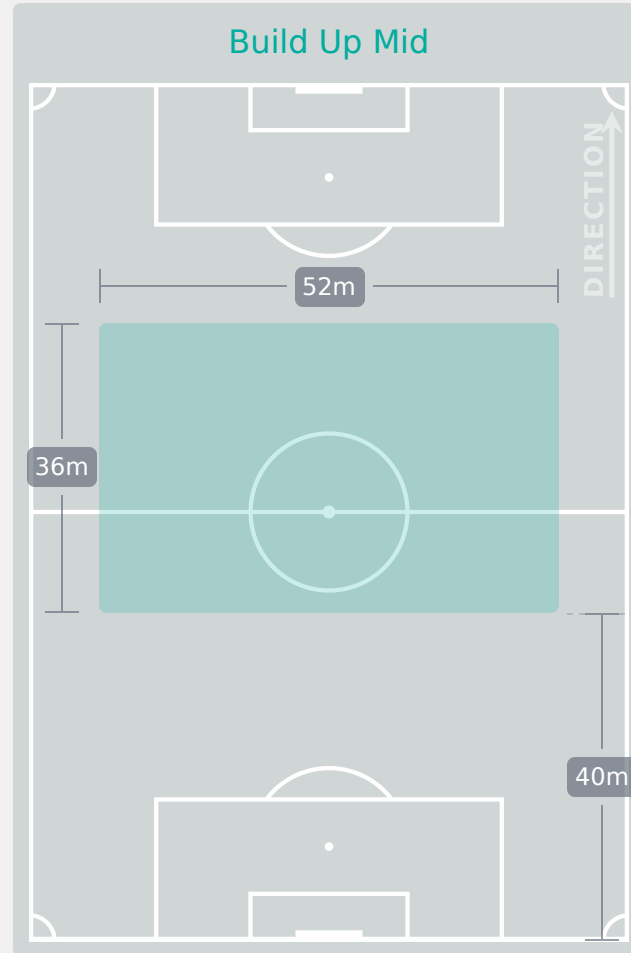
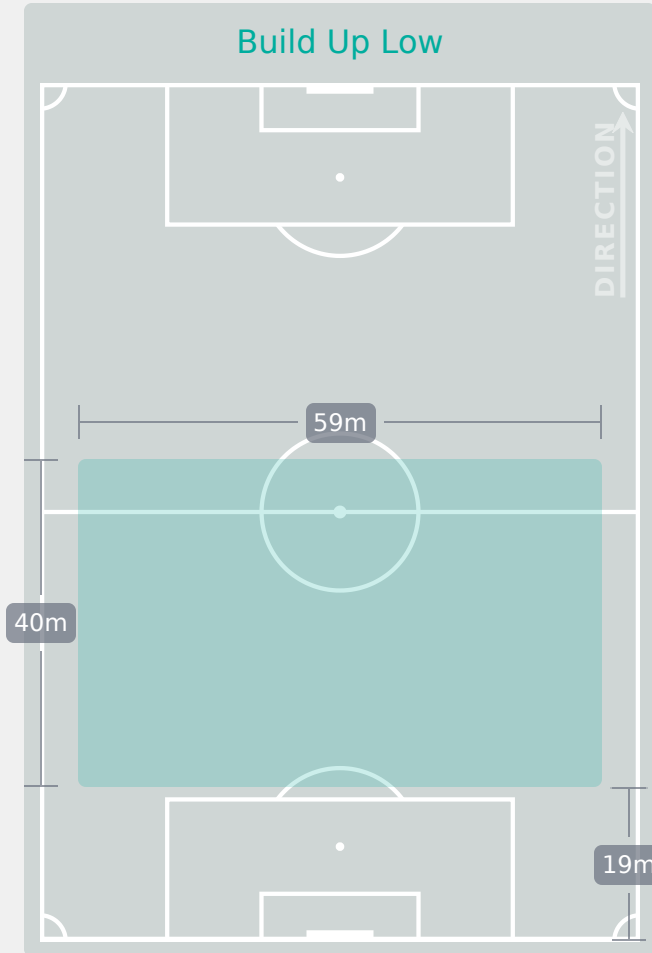
# IN POSSESSION

Canada 0 - 2 Brazil

# In Possession Line Height & Team Length



# In Possession Line Height & Team Length



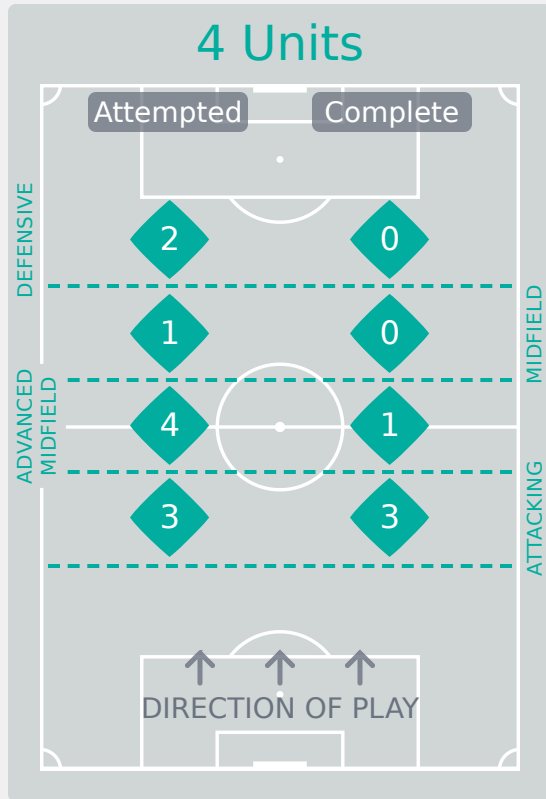
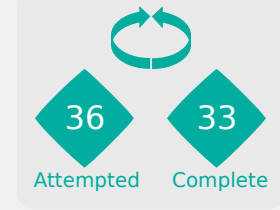
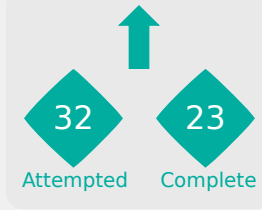
# Line Breaks



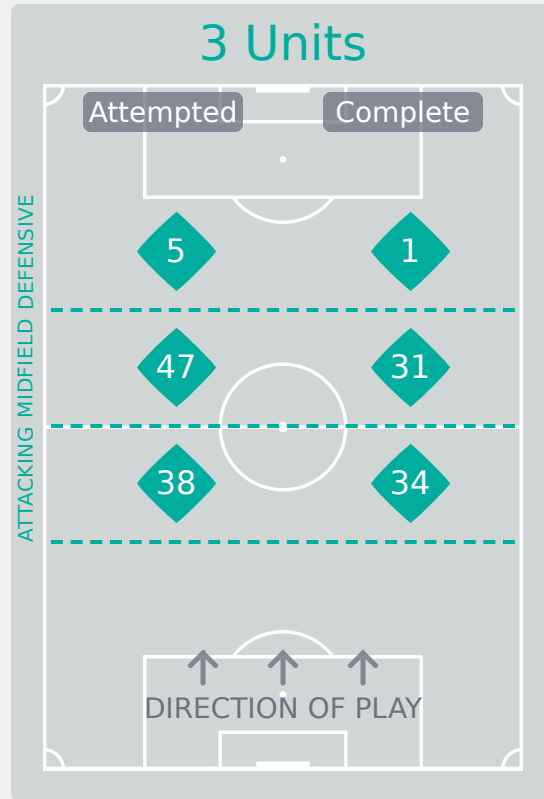
Canada

Attempted Line Breaks

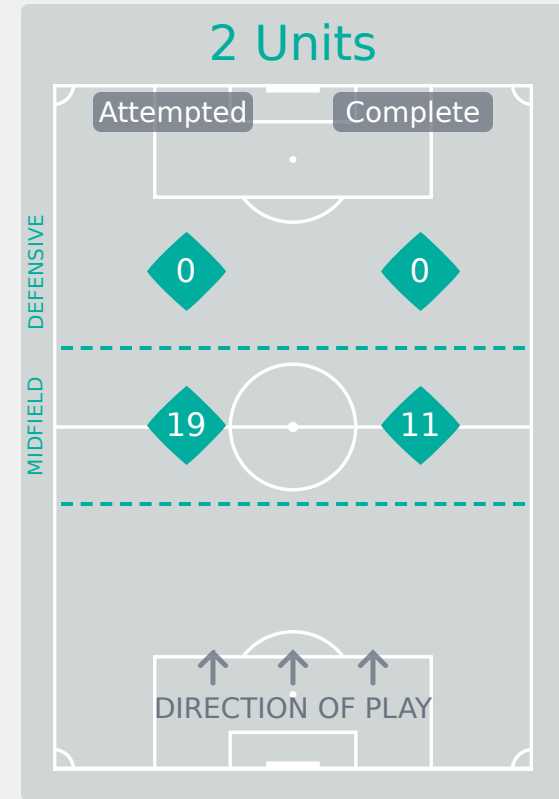
119



|                       |    |
|-----------------------|----|
| Attempted Line Breaks | 10 |
| Inside Shape          | 6  |
| Outside Shape         | 4  |



|                       |    |
|-----------------------|----|
| Attempted Line Breaks | 90 |
| Inside Shape          | 58 |
| Outside Shape         | 32 |



|                       |    |
|-----------------------|----|
| Attempted Line Breaks | 19 |
| Inside Shape          | 12 |
| Outside Shape         | 7  |



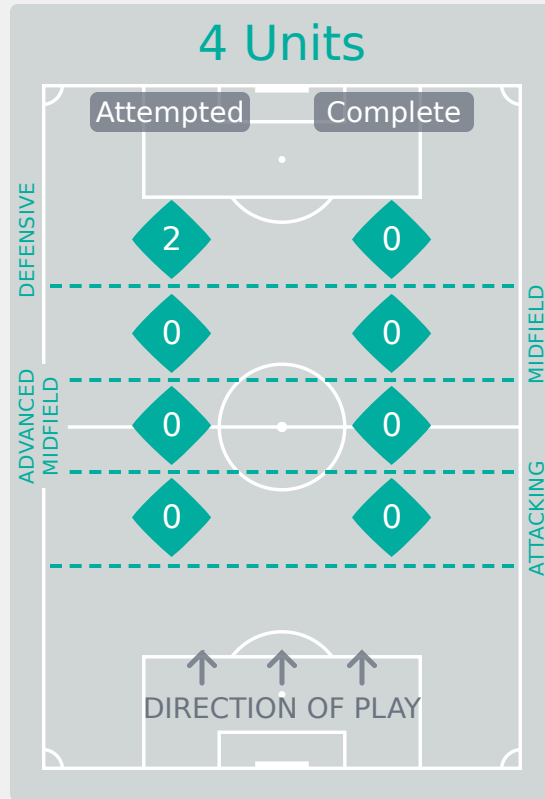
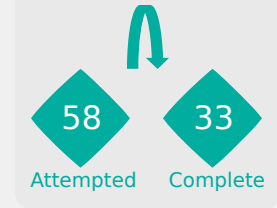
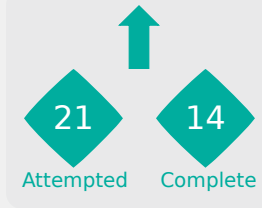
# Line Breaks



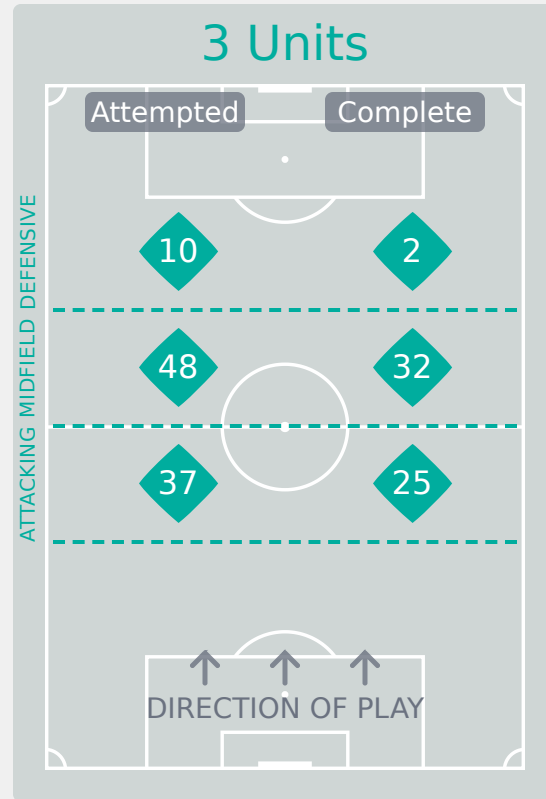
**Brazil**

Attempted Line Breaks

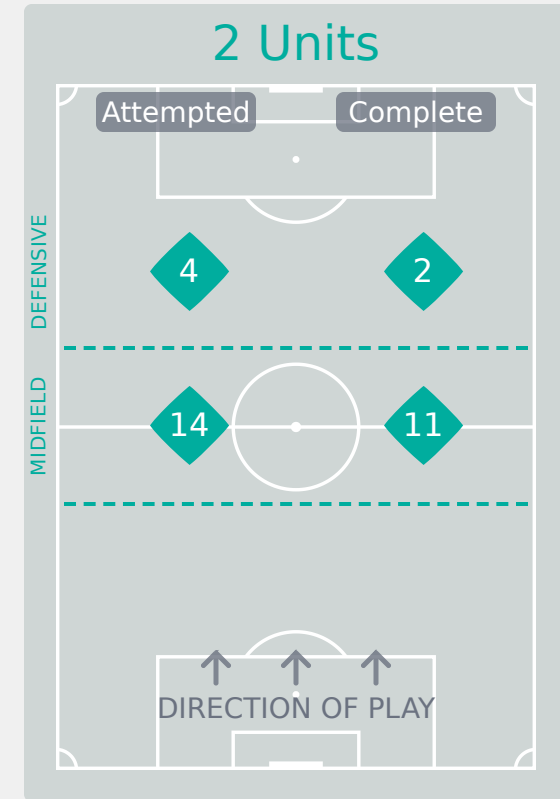
**115**



|                       |   |
|-----------------------|---|
| Attempted Line Breaks | 2 |
| Inside Shape          | 2 |
| Outside Shape         | 0 |



|                       |    |
|-----------------------|----|
| Attempted Line Breaks | 95 |
| Inside Shape          | 68 |
| Outside Shape         | 27 |



|                       |    |
|-----------------------|----|
| Attempted Line Breaks | 18 |
| Inside Shape          | 12 |
| Outside Shape         | 6  |

## Line Breaks



|    |                       |                       |                       |                         | 4 Units        |                         |               |                | 3 Units        |               |                | 2 Units       |                | Direction |        |      | Distribution Type |       |                  |
|----|-----------------------|-----------------------|-----------------------|-------------------------|----------------|-------------------------|---------------|----------------|----------------|---------------|----------------|---------------|----------------|-----------|--------|------|-------------------|-------|------------------|
| #  | Player                | Line Breaks Attempted | Line Breaks Completed | Line Break Completion % | Attacking Line | Attacking Midfield Line | Midfield Line | Defensive Line | Attacking Line | Midfield Line | Defensive Line | Midfield Line | Defensive Line | Through   | Around | Over | Pass              | Cross | Ball Progression |
| 20 | HENNING Noelle        | 22                    | 14                    | 64%                     | 2              | 3                       | 0             | 0              | 10             | 6             | 0              | 1             | 0              | 0         | 0      | 22   | 22                | 0     | 0                |
| 2  | ARCHIBALD Mya         | 15                    | 7                     | 47%                     | 0              | 0                       | 0             | 0              | 0              | 10            | 0              | 5             | 0              | 1         | 3      | 11   | 15                | 0     | 0                |
| 3  | OTTEY Ella            | 16                    | 11                    | 69%                     | 0              | 1                       | 0             | 0              | 6              | 5             | 3              | 1             | 0              | 2         | 9      | 5    | 16                | 0     | 0                |
| 4  | MARKESINI Zoe         | 15                    | 12                    | 80%                     | 0              | 0                       | 0             | 0              | 8              | 6             | 0              | 1             | 0              | 6         | 5      | 4    | 15                | 0     | 0                |
| 6  | HERNANDEZ GRAY Jeneva | 10                    | 8                     | 80%                     | 0              | 0                       | 0             | 0              | 4              | 3             | 0              | 3             | 0              | 5         | 4      | 1    | 10                | 0     | 0                |
| 7  | ALLEN Amanda          | 3                     | 1                     | 33%                     | 0              | 0                       | 0             | 1              | 1              | 0             | 1              | 0             | 0              | 1         | 2      | 0    | 2                 | 0     | 1                |
| 8  | JOURDE Florianne      | 7                     | 5                     | 71%                     | 0              | 0                       | 0             | 0              | 1              | 3             | 1              | 2             | 0              | 4         | 2      | 1    | 6                 | 1     | 0                |
| 9  | ROSE Nyah             | 2                     | 1                     | 50%                     | 0              | 0                       | 0             | 0              | 0              | 2             | 0              | 0             | 0              | 1         | 0      | 1    | 2                 | 0     | 0                |
| 10 | SMITH Olivia          | 4                     | 4                     | 100%                    | 0              | 0                       | 0             | 0              | 0              | 4             | 0              | 0             | 0              | 2         | 1      | 1    | 4                 | 0     | 0                |
| 17 | OKEKE Janet           | 12                    | 9                     | 75%                     | 1              | 0                       | 1             | 0              | 6              | 2             | 0              | 2             | 0              | 6         | 4      | 2    | 12                | 0     | 0                |
| 19 | JOHNSON Anaya         | 7                     | 4                     | 57%                     | 0              | 0                       | 0             | 1              | 1              | 3             | 0              | 2             | 0              | 3         | 2      | 2    | 7                 | 0     | 0                |
| 11 | CHUKWU Annabelle      | 1                     | 1                     | 100%                    | 0              | 0                       | 0             | 0              | 0              | 1             | 0              | 0             | 0              | 0         | 1      | 0    | 1                 | 0     | 0                |
| 13 | WATSON Renee          | 0                     | 0                     | 0%                      | 0              | 0                       | 0             | 0              | 0              | 0             | 0              | 0             | 0              | 0         | 0      | 0    | 0                 | 0     | 0                |
| 16 | McBRIDE Ella          | 3                     | 2                     | 67%                     | 0              | 0                       | 0             | 0              | 0              | 1             | 0              | 2             | 0              | 1         | 1      | 1    | 2                 | 1     | 0                |
| 18 | BRIGGS Kayla          | 2                     | 2                     | 100%                    | 0              | 0                       | 0             | 0              | 1              | 1             | 0              | 0             | 0              | 0         | 2      | 0    | 1                 | 0     | 1                |

## Line Breaks



|    |               |                       |                       |                         | 4 Units        |                         |               |                | 3 Units        |               |                | 2 Units       |                | Direction |        |      | Distribution Type |       |                  |
|----|---------------|-----------------------|-----------------------|-------------------------|----------------|-------------------------|---------------|----------------|----------------|---------------|----------------|---------------|----------------|-----------|--------|------|-------------------|-------|------------------|
| #  | Player        | Line Breaks Attempted | Line Breaks Completed | Line Break Completion % | Attacking Line | Attacking Midfield Line | Midfield Line | Defensive Line | Attacking Line | Midfield Line | Defensive Line | Midfield Line | Defensive Line | Through   | Around | Over | Pass              | Cross | Ball Progression |
| 1  | RILLARY       | 8                     | 3                     | 38%                     | 0              | 0                       | 0             | 0              | 5              | 2             | 0              | 1             | 0              | 1         | 1      | 6    | 8                 | 0     | 0                |
| 2  | GI FERNANDES  | 19                    | 12                    | 63%                     | 0              | 0                       | 0             | 0              | 4              | 8             | 0              | 5             | 2              | 6         | 3      | 10   | 18                | 0     | 1                |
| 3  | GUTA          | 16                    | 14                    | 88%                     | 0              | 0                       | 0             | 0              | 11             | 4             | 1              | 0             | 0              | 1         | 7      | 8    | 16                | 0     | 0                |
| 4  | CARLA         | 12                    | 9                     | 75%                     | 0              | 0                       | 0             | 0              | 7              | 4             | 0              | 1             | 0              | 2         | 7      | 3    | 12                | 0     | 0                |
| 5  | REBECA        | 10                    | 6                     | 60%                     | 0              | 0                       | 0             | 1              | 4              | 3             | 0              | 2             | 0              | 2         | 2      | 6    | 9                 | 0     | 1                |
| 6  | ANA GUIMARAES | 16                    | 11                    | 69%                     | 0              | 0                       | 0             | 0              | 3              | 8             | 3              | 2             | 0              | 0         | 6      | 10   | 16                | 0     | 0                |
| 7  | VENDITO       | 7                     | 4                     | 57%                     | 0              | 0                       | 0             | 0              | 0              | 5             | 0              | 1             | 1              | 1         | 1      | 5    | 6                 | 0     | 1                |
| 11 | DUDINHA       | 6                     | 5                     | 83%                     | 0              | 0                       | 0             | 0              | 0              | 3             | 2              | 1             | 0              | 0         | 3      | 3    | 6                 | 0     | 0                |
| 15 | MARZIA        | 4                     | 1                     | 25%                     | 0              | 0                       | 0             | 0              | 2              | 2             | 0              | 0             | 0              | 2         | 1      | 1    | 4                 | 0     | 0                |
| 16 | MILENA        | 3                     | 1                     | 33%                     | 0              | 0                       | 0             | 1              | 0              | 1             | 1              | 0             | 0              | 1         | 1      | 1    | 1                 | 1     | 1                |
| 17 | LARA          | 2                     | 0                     | 0%                      | 0              | 0                       | 0             | 0              | 1              | 1             | 0              | 0             | 0              | 0         | 0      | 2    | 2                 | 0     | 0                |
| 9  | PRISCILA      | 4                     | 2                     | 50%                     | 0              | 0                       | 0             | 0              | 0              | 3             | 1              | 0             | 0              | 2         | 2      | 0    | 3                 | 0     | 1                |
| 13 | RAVENA        | 1                     | 1                     | 100%                    | 0              | 0                       | 0             | 0              | 0              | 1             | 0              | 0             | 0              | 1         | 0      | 0    | 1                 | 0     | 0                |
| 18 | FERNANDA      | 2                     | 0                     | 0%                      | 0              | 0                       | 0             | 0              | 0              | 0             | 2              | 0             | 0              | 1         | 0      | 1    | 2                 | 0     | 0                |
| 20 | CAROL         | 5                     | 3                     | 60%                     | 0              | 0                       | 0             | 0              | 0              | 3             | 0              | 1             | 1              | 1         | 2      | 2    | 5                 | 0     | 0                |

# Passing Networks

| #  | Passes From ↓ to →    | HENNING Noelle | ARCHIBALD Mya | OTTEY Ella | MARKESINI Zoe | HERNANDEZ GRAY Geneva | ALLEN Amanda | JOURDE Florianne | ROSE Nyah | SMITH Olivia | OKEKE Janet | JOHNSON Anaya | CHUKWU Annabelle | WATSON Renee | McBRIDE Ella | BRIGGS Kayla |
|----|-----------------------|----------------|---------------|------------|---------------|-----------------------|--------------|------------------|-----------|--------------|-------------|---------------|------------------|--------------|--------------|--------------|
| 20 | HENNING Noelle        | 0              | 3             | 6          | 1             | 0                     | 0            | 2                | 1         | 2            | 5           | 2             | 0                | 0            | 0            | 1            |
| 2  | ARCHIBALD Mya         | 0              | 0             | 0          | 2             | 1                     | 1            | 0                | 1         | 1            | 2           | 2             | 0                | 0            | 2            | 1            |
| 3  | OTTEY Ella            | 0              | 0             | 0          | 4             | 4                     | 1            | 1                | 1         | 5            | 0           | 1             | 0                | 1            | 0            | 0            |
| 4  | MARKESINI Zoe         | 3              | 1             | 4          | 0             | 4                     | 0            | 3                | 0         | 1            | 8           | 1             | 1                | 1            | 1            | 1            |
| 6  | HERNANDEZ GRAY Geneva | 1              | 3             | 8          | 4             | 0                     | 1            | 4                | 0         | 1            | 4           | 4             | 1                | 1            | 0            | 1            |
| 7  | ALLEN Amanda          | 0              | 0             | 1          | 0             | 3                     | 0            | 0                | 0         | 1            | 0           | 2             | 0                | 0            | 0            | 0            |
| 8  | JOURDE Florianne      | 0              | 1             | 2          | 3             | 4                     | 4            | 0                | 1         | 2            | 0           | 1             | 1                | 0            | 0            | 0            |
| 9  | ROSE Nyah             | 0              | 0             | 0          | 0             | 0                     | 1            | 1                | 0         | 3            | 0           | 0             | 0                | 0            | 0            | 0            |
| 10 | SMITH Olivia          | 0              | 0             | 1          | 0             | 0                     | 1            | 5                | 2         | 0            | 0           | 3             | 0                | 0            | 0            | 0            |
| 17 | OKEKE Janet           | 3              | 6             | 0          | 11            | 1                     | 0            | 2                | 0         | 0            | 0           | 2             | 1                | 0            | 0            | 0            |
| 19 | JOHNSON Anaya         | 1              | 3             | 0          | 2             | 6                     | 3            | 0                | 0         | 0            | 1           | 0             | 0                | 0            | 0            | 0            |
| 11 | CHUKWU Annabelle      | 0              | 0             | 1          | 0             | 1                     | 0            | 0                | 0         | 0            | 0           | 1             | 0                | 1            | 0            | 0            |
| 13 | WATSON Renee          | 0              | 0             | 1          | 0             | 0                     | 0            | 0                | 0         | 0            | 0           | 0             | 0                | 0            | 1            | 0            |
| 16 | McBRIDE Ella          | 0              | 1             | 1          | 1             | 0                     | 0            | 0                | 0         | 0            | 0           | 0             | 0                | 0            | 0            | 1            |
| 18 | BRIGGS Kayla          | 0              | 1             | 0          | 0             | 0                     | 0            | 1                | 0         | 0            | 0           | 0             | 1                | 0            | 1            | 0            |

| Top 5 Player to Player Passers |               |                        |
|--------------------------------|---------------|------------------------|
| Player                         | Passed To     | % of Total Team Passes |
| OKEKE Janet                    | MARKESINI Zoe | 5.1%                   |
| MARKESINI Zoe                  | OKEKE Janet   | 3.7%                   |
| HERNANDEZ GRAY Geneva          | OTTEY Ella    | 3.7%                   |
| HENNING Noelle                 | OTTEY Ella    | 2.8%                   |
| OKEKE Janet                    | ARCHIBALD Mya | 2.8%                   |

# Passing Networks

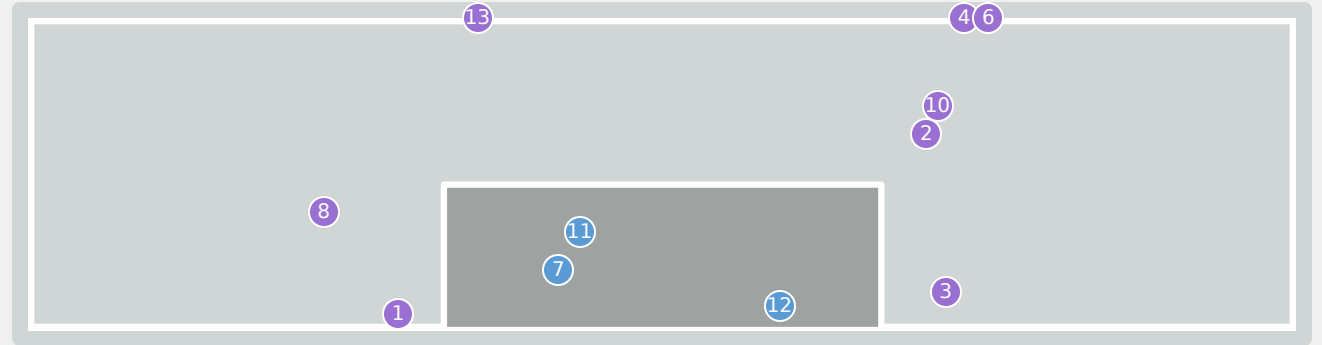
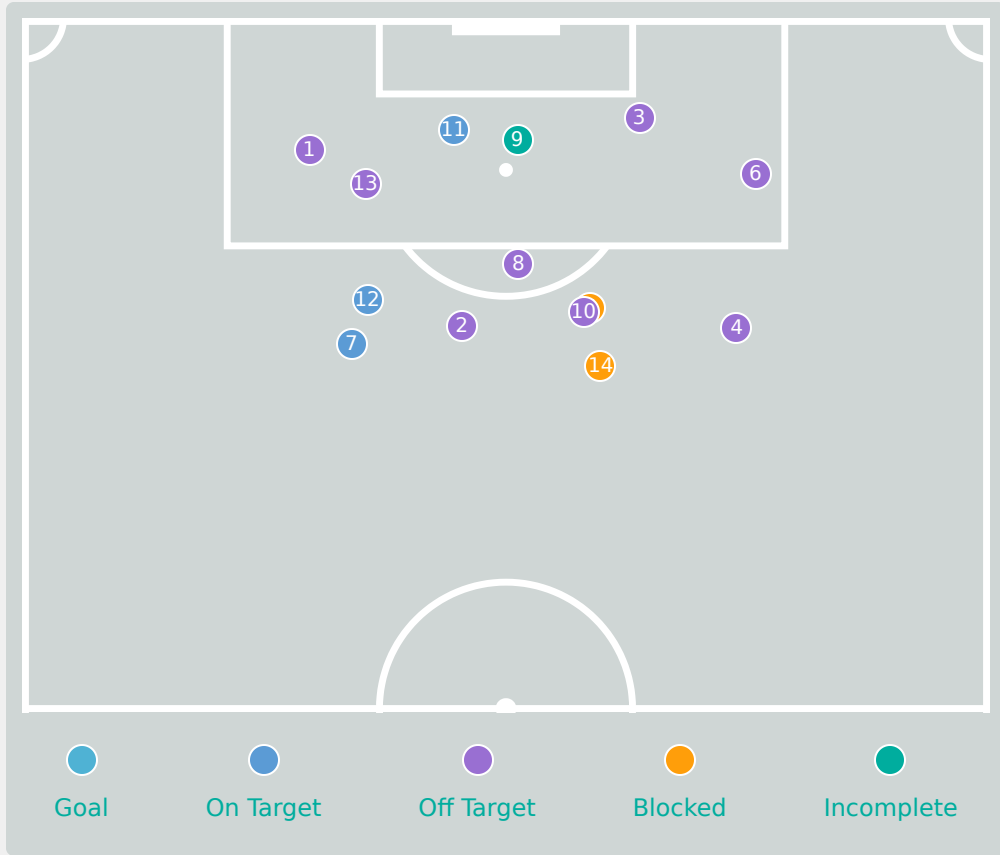
# Brazil








| #  | Passes From ↓ to → | RILLARY | GI FERNANDES | GUTA | CARLA | REBECA | ANA GUIMARAES | VENDITO | DUDINHA | MARZIA | MILENA | LARA | PRISCILA | RAVENA | FERNANDA | CAROL |
|----|--------------------|---------|--------------|------|-------|--------|---------------|---------|---------|--------|--------|------|----------|--------|----------|-------|
| 1  | RILLARY            |         | 0            | 15   | 11    | 3      | 0             | 0       | 0       | 0      | 0      | 0    | 0        | 0      | 0        | 1     |
| 2  | GI FERNANDES       | 0       |              | 1    | 0     | 2      | 1             | 4       | 2       | 2      | 5      | 2    | 3        | 0      | 0        | 1     |
| 3  | GUTA               | 19      | 11           |      | 0     | 7      | 0             | 0       | 1       | 2      | 2      | 0    | 3        | 0      | 0        | 1     |
| 4  | CARLA              | 7       | 2            | 2    |       | 7      | 5             | 0       | 1       | 0      | 0      | 1    | 0        | 0      | 1        | 3     |
| 5  | REBECA             | 0       | 2            | 10   | 7     |        | 3             | 0       | 0       | 0      | 0      | 1    | 2        | 0      | 0        | 1     |
| 6  | ANA GUIMARAES      | 0       | 1            | 1    | 3     | 3      |               | 1       | 6       | 3      | 0      | 0    | 1        | 0      | 1        | 1     |
| 7  | VENDITO            | 0       | 4            | 0    | 0     | 0      | 0             |         | 2       | 0      | 2      | 5    | 1        | 0      | 0        | 0     |
| 11 | DUDINHA            | 0       | 0            | 0    | 0     | 0      | 3             | 6       |         | 2      | 1      | 0    | 2        | 0      | 0        | 1     |
| 15 | MARZIA             | 1       | 4            | 3    | 2     | 0      | 2             | 0       | 1       |        | 0      | 0    | 1        | 0      | 0        | 0     |
| 16 | MILENA             | 0       | 4            | 0    | 0     | 0      | 0             | 1       | 1       | 1      |        | 0    | 0        | 0      | 0        | 0     |
| 17 | LARA               | 0       | 3            | 0    | 2     | 1      | 3             | 1       | 1       | 3      | 2      |      | 2        | 0      | 0        | 1     |
| 9  | PRISCILA           | 0       | 1            | 0    | 1     | 1      | 2             | 1       | 2       | 0      | 0      | 0    |          | 0      | 0        | 0     |
| 13 | RAVENA             | 0       | 0            | 0    | 0     | 0      | 0             | 0       | 0       | 0      | 0      | 0    | 1        |        | 0        | 0     |
| 18 | FERNANDA           | 0       | 0            | 0    | 0     | 0      | 0             | 0       | 0       | 0      | 0      | 1    | 1        | 0      |          | 0     |
| 20 | CAROL              | 3       | 1            | 2    | 1     | 0      | 2             | 0       | 2       | 0      | 0      | 0    | 1        | 1      | 0        |       |

| Top 5 Player to Player Passers |              |                        |
|--------------------------------|--------------|------------------------|
| Player                         | Passed To    | % of Total Team Passes |
| GUTA                           | RILLARY      | 71%                    |
| RILLARY                        | GUTA         | 5.6%                   |
| RILLARY                        | CARLA        | 4.1%                   |
| GUTA                           | GI FERNANDES | 4.1%                   |
| REBECA                         | GUTA         | 3.7%                   |

# Attempts at Goal



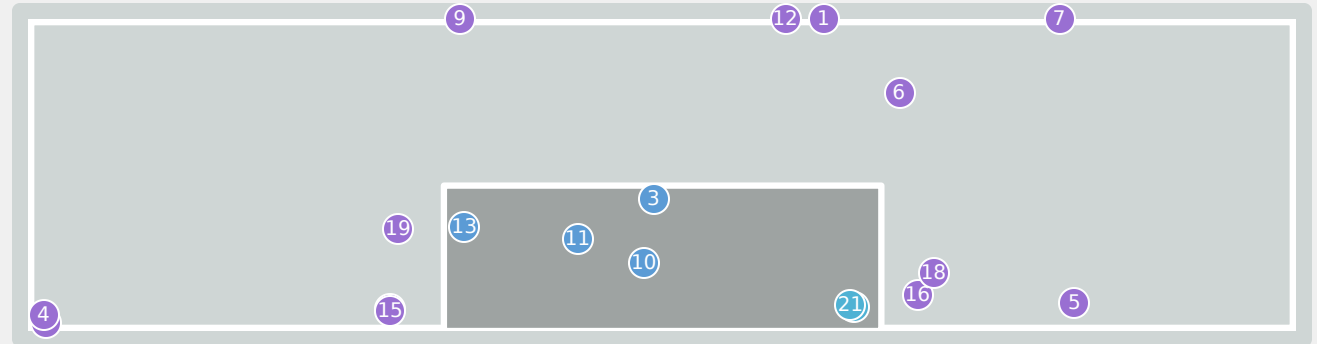
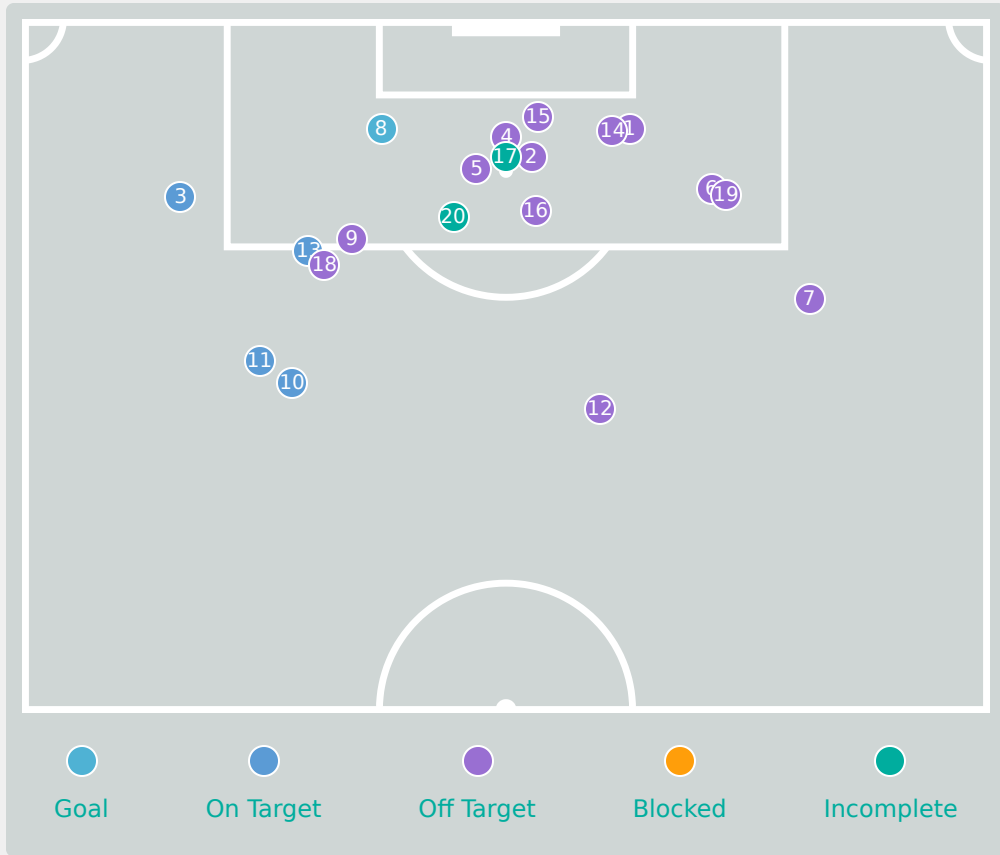
| Key  | Outcome    | Shots |
|--|------------|-------|
|   | Goals      | 0     |
|   | On Target  | 3     |
|   | Off Target | 8     |
|   | Blocked    | 2     |
|  | Incomplete | 1     |






# Attempts at Goal



| Time | Player             | Outcome                                | Body Part  | Delivery Type    |
|------|--------------------|--|------------|------------------|
| 3    | 10 SMITH Olivia    | Off Target                             | Left Foot  | Loose Ball       |
| 6    | 10 SMITH Olivia    | Off Target                             | Right Foot | Pass             |
| 9    | 9 ROSE Nyah        | Off Target                             | Right Foot | Cross            |
| 29   | 7 ALLEN Amanda     | Off Target                             | Right Foot | Loose Ball       |
| 31   | 19 JOHNSON Anaya   | Incomplete - Blocked                   | Right Foot | Ball Progression |
| 32   | 10 SMITH Olivia    | Deflected Off Target - Defensive Event | Left Foot  | Pass             |
| 33   | 7 ALLEN Amanda     | On Target - Saved                      | Right Foot | Pass             |
| 36   | 8 JOURDE Florianne | Off Target                             | Left Foot  | Pass             |
| 40   | 3 OTTEY Ella       | Incomplete - Player On Ball Error      | Lower Body | Corner           |
| 50   | 9 ROSE Nyah        | Off Target                             | Right Foot | Other            |
| 66   | 4 MARKESINI Zoe    | On Target - Saved                      | Head       | Corner           |
| 67   | 18 BRIGGS Kayla    | On Target - Saved                      | Left Foot  | Loose Ball       |
| 87   | 13 WATSON Renee    | Off Target                             | Right Foot | Pass             |
| 97   | 13 WATSON Renee    | Incomplete - Blocked                   | Left Foot  | Loose Ball       |

# Attempts at Goal



| Key  | Outcome    | Shots |
|--|------------|-------|
|   | Goals      | 2     |
|   | On Target  | 4     |
|   | Off Target | 13    |
|   | Blocked    | 0     |
|  | Incomplete | 2     |





# Attempts at Goal

| Time | Player         | Outcome                                | Body Part  | Delivery Type |
|------|----------------|--|------------|---------------|
| 0    | 16 MILENA      | Deflected Off Target - Defensive Event | Right Foot | Pass          |
| 1    | 5 REBECA       | Off Target                             | Head       | Corner        |
| 15   | 2 GI FERNANDES | On Target - Saved                      | Right Foot | Freekick      |
| 15   | 5 REBECA       | Off Target                             | Head       | Corner        |
| 21   | 5 REBECA       | Off Target                             | Head       | Pass          |
| 22   | 15 MARZIA      | Off Target                             | Right Foot | Loose Ball    |
| 30   | 2 GI FERNANDES | Off Target                             | Right Foot | Pass          |
| 34   | 7 VENDITO      | On Target - Goal                       | Right Foot | Pass          |
| 38   | 11 DUDINHA     | Deflected Off Target - Defensive Event | Left Foot  | Loose Ball    |
| 47   | 7 VENDITO      | On Target - Saved                      | Right Foot | Loose Ball    |
| 45   | 11 DUDINHA     | On Target - Saved                      | Right Foot | Pass          |
| 52   | 2 GI FERNANDES | Off Target                             | Right Foot | Loose Ball    |
| 54   | 11 DUDINHA     | On Target - Saved                      | Right Foot | Pass          |
| 54   | 4 CARLA        | Off Target                             | Left Foot  | Corner        |
| 58   | 11 DUDINHA     | Off Target                             | Right Foot | Cross         |
| 74   | 2 GI FERNANDES | Off Target                             | Right Foot | Freekick      |
| 75   | 9 PRISCILA     | Incomplete - Player On Ball Error      | Head       | Cross         |

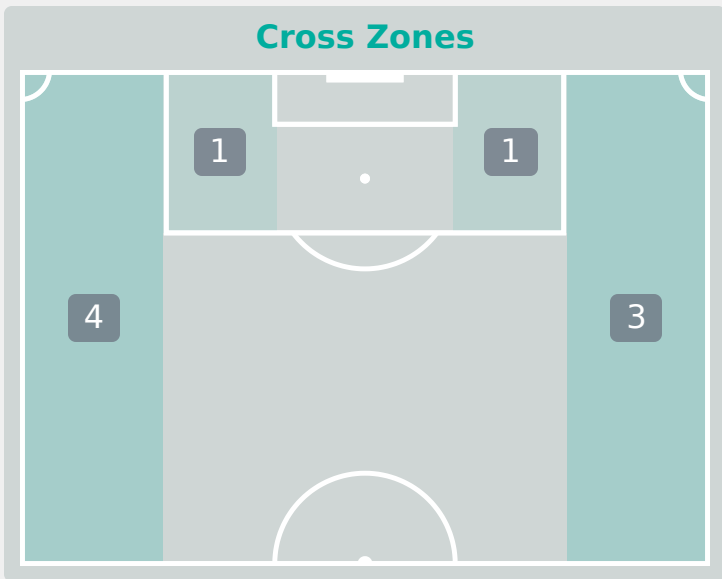
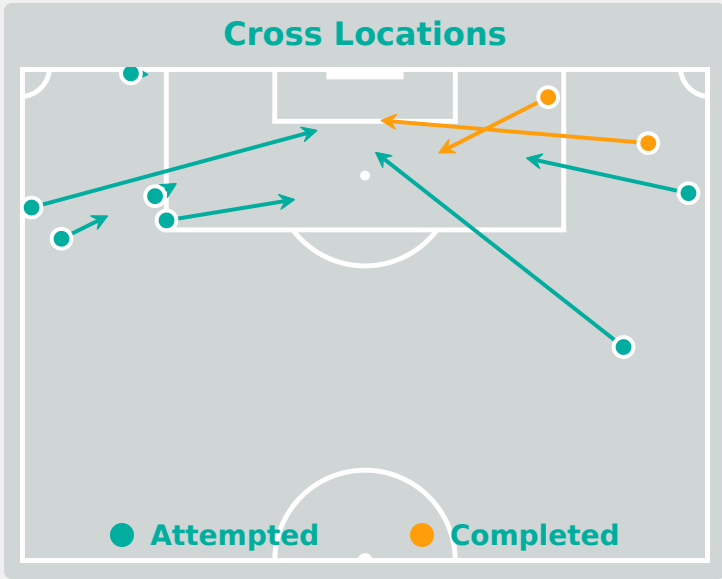
Brazil



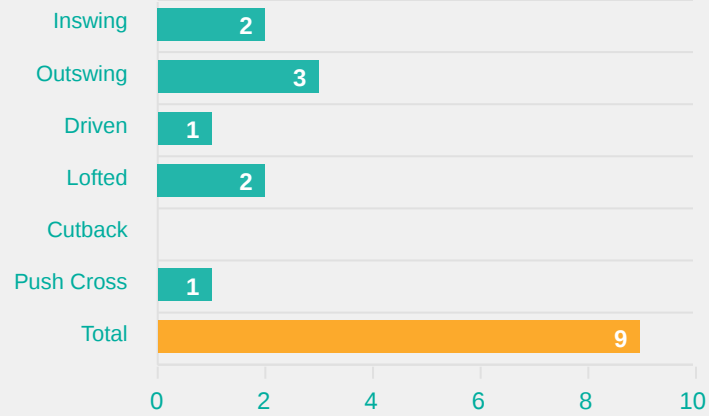
# Attempts at Goal

| Time | Player     | Outcome                           | Body Part  | Delivery Type |
|------|------------|-----------------------------------|------------|---------------|
| 75   | 9 PRISCILA | Off Target                        | Right Foot | Pass          |
| 79   | 11 DUDINHA | Off Target - Saved                | Right Foot | Pass          |
| 92   | 11 DUDINHA | Incomplete - Player On Ball Error | Left Foot  | Pass          |
| 98   | 20 CAROL   | On Target - Goal                  | Left Foot  | Other         |

# Crosses (Open Play)



## Delivery Type



Attempted

9

Completed

2

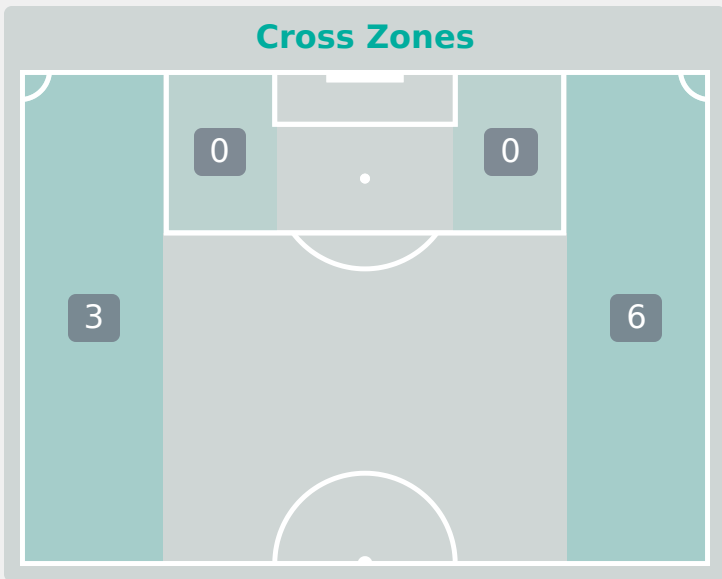
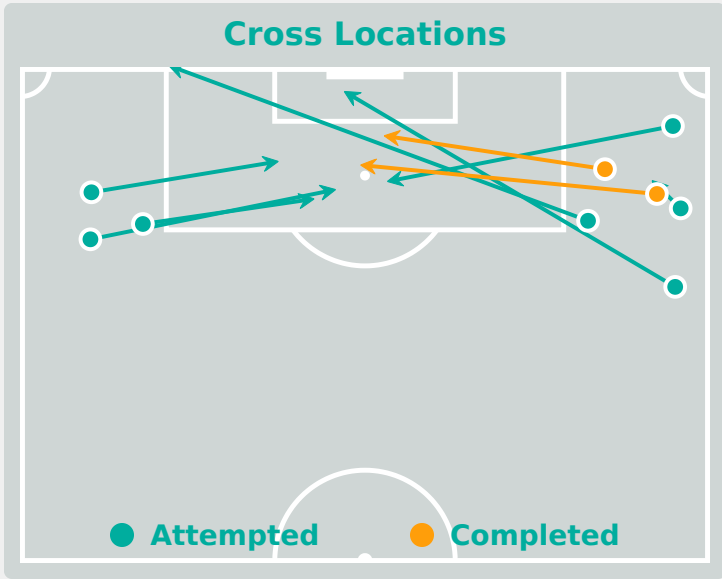
Most Crosses Attempted

3

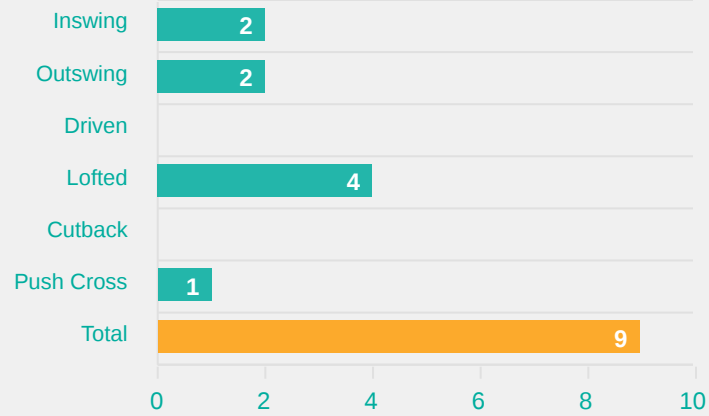
**ARCHIBALD Mya**  
RIGHT BACK

| #  | Player                | Inswing | Outswing | Driven | Lofted | Cutback | Push Cross | Total Attempted |
|----|-----------------------|---------|----------|--------|--------|---------|------------|-----------------|
| 20 | HENNING Noelle        | 0       | 0        | 0      | 0      | 0       | 0          | 0               |
| 2  | ARCHIBALD Mya         | 1       | 1        | 0      | 1      | 0       | 0          | 3               |
| 3  | OTTEY Ella            | 0       | 1        | 0      | 1      | 0       | 0          | 2               |
| 4  | MARKESINI Zoe         | 0       | 0        | 0      | 0      | 0       | 0          | 0               |
| 6  | HERNANDEZ GRAY Jeneva | 0       | 0        | 0      | 0      | 0       | 0          | 0               |
| 7  | ALLEN Amanda          | 0       | 0        | 0      | 0      | 0       | 1          | 1               |
| 8  | JOURDE Florianne      | 0       | 1        | 0      | 0      | 0       | 0          | 1               |
| 9  | ROSE Nyah             | 0       | 0        | 0      | 0      | 0       | 0          | 0               |
| 10 | SMITH Olivia          | 0       | 0        | 1      | 0      | 0       | 0          | 1               |
| 17 | OKEKE Janet           | 0       | 0        | 0      | 0      | 0       | 0          | 0               |
| 19 | JOHNSON Anaya         | 0       | 0        | 0      | 0      | 0       | 0          | 0               |
| 11 | CHUKWU Annabelle      | 0       | 0        | 0      | 0      | 0       | 0          | 0               |
| 13 | WATSON Renee          | 0       | 0        | 0      | 0      | 0       | 0          | 0               |
| 16 | McBRIDE Ella          | 1       | 0        | 0      | 0      | 0       | 0          | 1               |
| 18 | BRIGGS Kayla          | 0       | 0        | 0      | 0      | 0       | 0          | 0               |

# Crosses (Open Play)



## Delivery Type



Attempted

9

Completed

2

Most Crosses Attempted

3

**GI FERNANDES**  
RIGHT MIDFIELD

| #  | Player        | Inswing | Outswing | Driven | Lofted | Cutback | Push Cross | Total Attempted |
|----|---------------|---------|----------|--------|--------|---------|------------|-----------------|
| 1  | RILLARY       | 0       | 0        | 0      | 0      | 0       | 0          | 0               |
| 2  | GI FERNANDES  | 1       | 0        | 0      | 1      | 0       | 1          | 3               |
| 3  | GUTA          | 0       | 0        | 0      | 0      | 0       | 0          | 0               |
| 4  | CARLA         | 0       | 0        | 0      | 0      | 0       | 0          | 0               |
| 5  | REBECA        | 0       | 0        | 0      | 0      | 0       | 0          | 0               |
| 6  | ANA GUIMARAES | 0       | 0        | 0      | 0      | 0       | 0          | 0               |
| 7  | VENDITO       | 0       | 0        | 0      | 0      | 0       | 0          | 0               |
| 11 | DUDINHA       | 1       | 1        | 0      | 0      | 0       | 0          | 2               |
| 15 | MARZIA        | 0       | 0        | 0      | 0      | 0       | 0          | 0               |
| 16 | MILENA        | 0       | 0        | 0      | 3      | 0       | 0          | 3               |
| 17 | LARA          | 0       | 0        | 0      | 0      | 0       | 0          | 0               |
| 9  | PRISCILA      | 0       | 0        | 0      | 0      | 0       | 0          | 0               |
| 13 | RAVENA        | 0       | 0        | 0      | 0      | 0       | 0          | 0               |
| 18 | FERNANDA      | 0       | 0        | 0      | 0      | 0       | 0          | 0               |
| 20 | CAROL         | 0       | 1        | 0      | 0      | 0       | 0          | 1               |

# Offering to Receive

**234**  
Total Offers Made

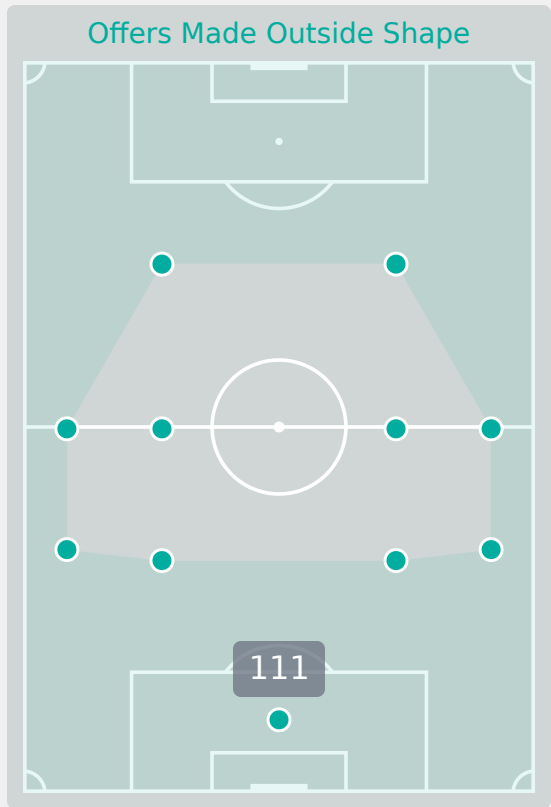
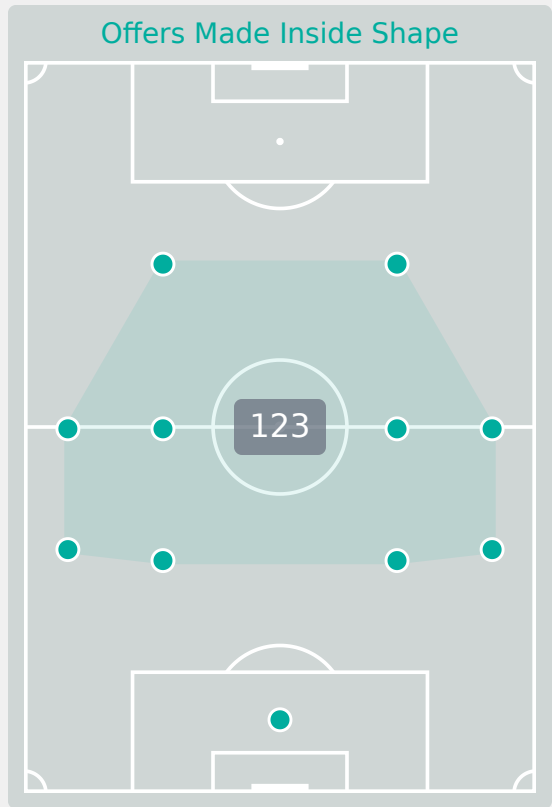
**69**  
Total Offers Received

**Most Offers**  
**63**  
**JOURDE Florianne**  
ATTACKING MIDFIELD

**101**  
Offers Made in Final Third

**113**  
Offers Made in Middle Third

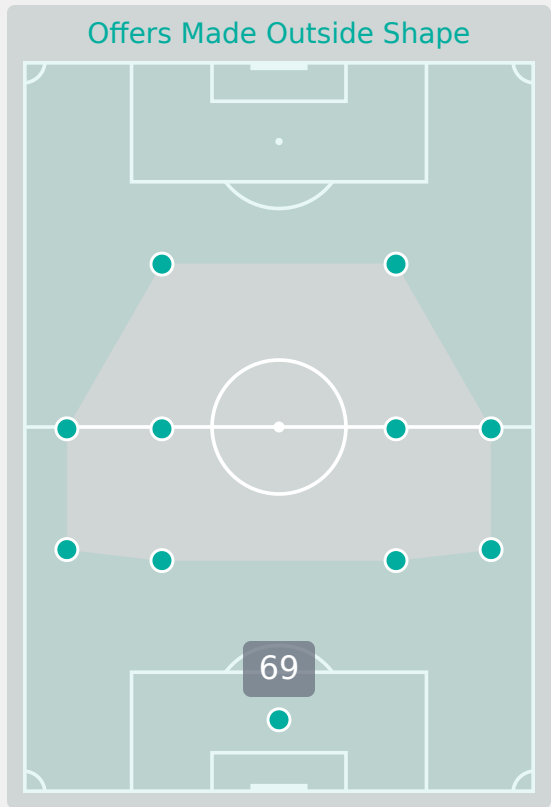
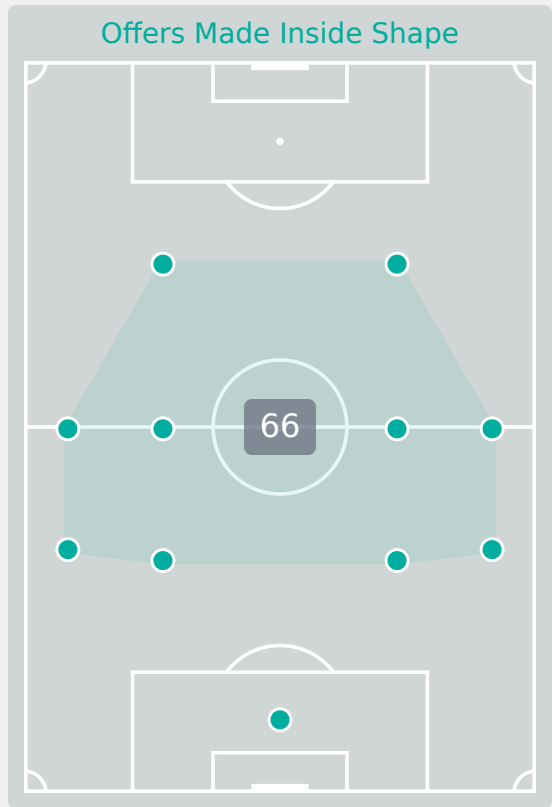
**20**  
Offers Made in Defensive Third



| #  | Player                | Offers Made | Offers Received | % Made & Received |
|----|-----------------------|-------------|-----------------|-------------------|
| 20 | HENNING Noelle        | 0           | 0               | 0%                |
| 2  | ARCHIBALD Mya         | 3           | 3               | 100%              |
| 3  | OTTEY Ella            | 11          | 5               | 45.5%             |
| 4  | MARKESINI Zoe         | 0           | 0               | 0%                |
| 6  | HERNANDEZ GRAY Jeneva | 13          | 4               | 30.8%             |
| 7  | ALLEN Amanda          | 19          | 1               | 5.3%              |
| 8  | JOURDE Florianne      | 63          | 14              | 22.2%             |
| 9  | ROSE Nyah             | 16          | 4               | 25%               |
| 10 | SMITH Olivia          | 34          | 12              | 35.3%             |
| 17 | OKEKE Janet           | 5           | 4               | 80%               |
| 19 | JOHNSON Anaya         | 28          | 12              | 42.9%             |
| 11 | CHUKWU Annabelle      | 5           | 0               | 0%                |
| 13 | WATSON Renee          | 16          | 4               | 25%               |
| 16 | McBRIDE Ella          | 15          | 3               | 20%               |
| 18 | BRIGGS Kayla          | 6           | 3               | 50%               |



# Offering to Receive

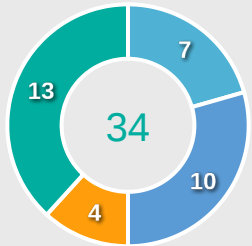


| #  | Player        | Offers Made | Offers Received | % Made & Received |
|----|---------------|-------------|-----------------|-------------------|
| 1  | RILLARY       | 0           | 0               | 0%                |
| 2  | GI FERNANDES  | 23          | 11              | 47.8%             |
| 3  | GUTA          | 2           | 1               | 50%               |
| 4  | CARLA         | 1           | 1               | 100%              |
| 5  | REBECA        | 4           | 1               | 25%               |
| 6  | ANA GUIMARAES | 31          | 14              | 45.2%             |
| 7  | VENDITO       | 14          | 5               | 35.7%             |
| 11 | DUDINHA       | 14          | 3               | 21.4%             |
| 15 | MARZIA        | 2           | 2               | 100%              |
| 16 | MILENA        | 9           | 3               | 33.3%             |
| 17 | LARA          | 19          | 4               | 21.1%             |
| 9  | PRISCILA      | 6           | 3               | 50%               |
| 13 | RAVENA        | 2           | 1               | 50%               |
| 18 | FERNANDA      | 6           | 1               | 16.7%             |
| 20 | CAROL         | 2           | 1               | 50%               |

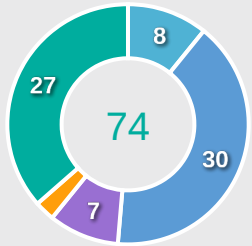
# Movement to Receive

## Movement Types by Phase

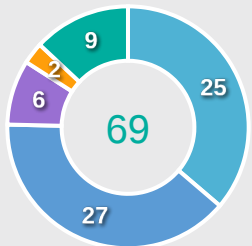
### Final Third Phase



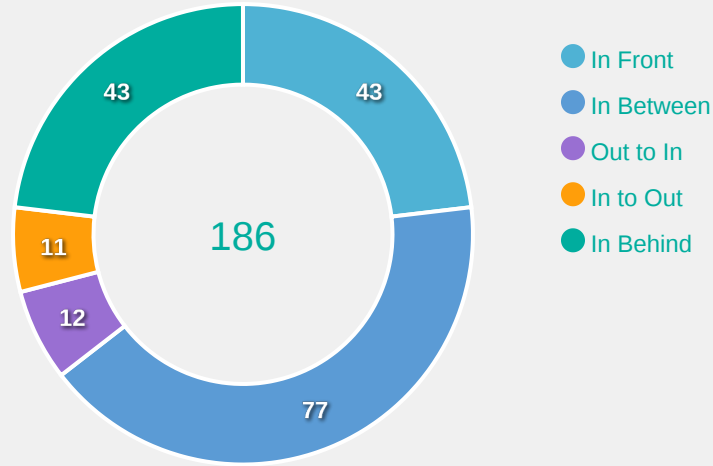
### Progression Phase



### Build Up Phase



## All Movement Types

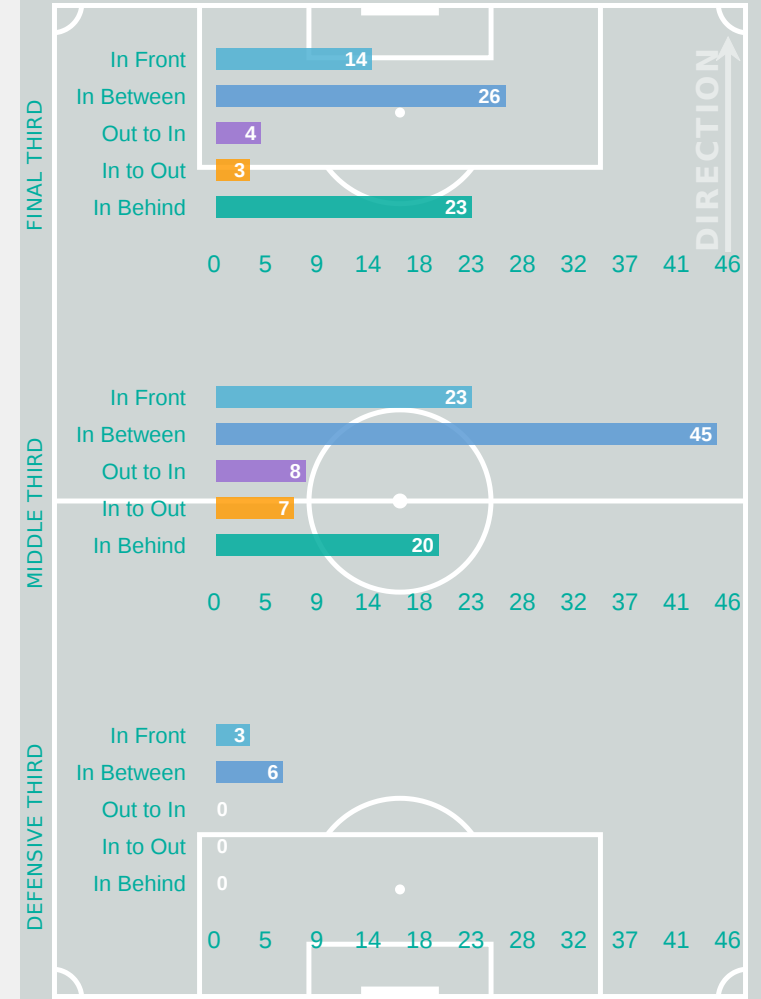


- In Front
- In Between
- Out to In
- In to Out
- In Behind

## Top Ranked Players

| Type       | Player             | Movements |
|------------|--------------------|-----------|
| In Front   | 19 JOHNSON Anaya   | 14        |
| In Between | 8 JOURDE Florianne | 39        |
| Out to In  | 19 JOHNSON Anaya   | 4         |
| In to Out  | 8 JOURDE Florianne | 4         |
| In Behind  | 10 SMITH Olivia    | 14        |

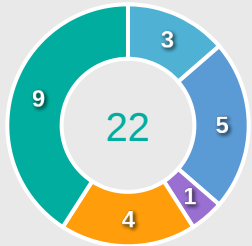
## Movement Types Pitch Third



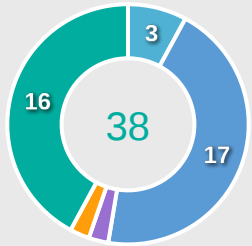
# Movement to Receive

## Movement Types by Phase

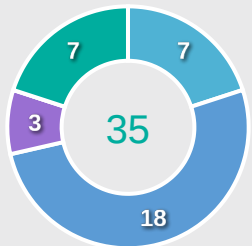
### Final Third Phase



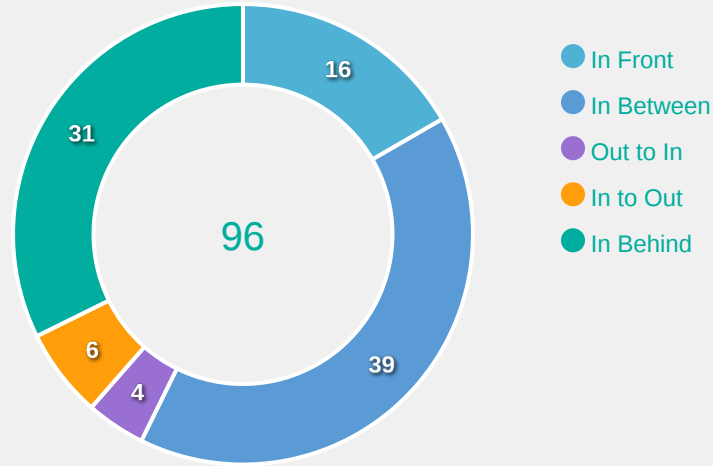
### Progression Phase



### Build Up Phase



## All Movement Types

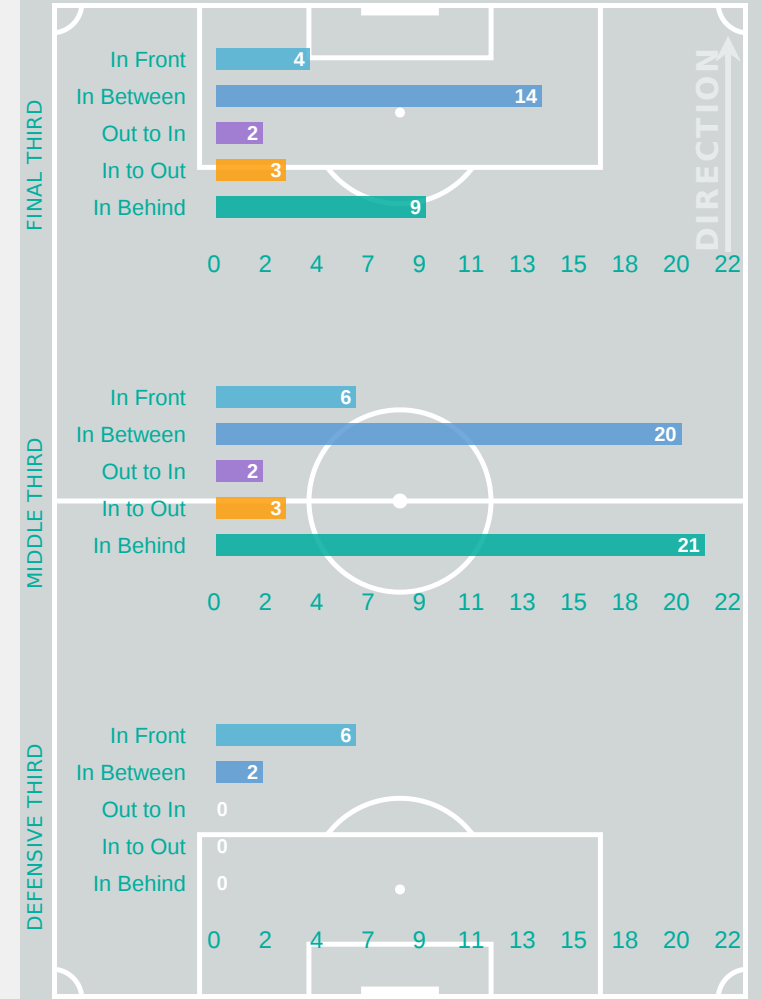


- In Front
- In Between
- Out to In
- In to Out
- In Behind

## Top Ranked Players

| Type       | Player          | Movements |
|------------|-----------------|-----------|
| In Front   | 6 ANA GUIMARAES | 4         |
| In Between | 17 LARA         | 14        |
| Out to In  | 16 MILENA       | 2         |
| In to Out  | 2 GI FERNANDES  | 1         |
| In Behind  | 6 ANA GUIMARAES | 14        |

## Movement Types Pitch Third







# OUT OF POSSESSION

Canada 0 - 2 Brazil

# Defensive Actions

**60**

**Forced Turnovers**

**54**

**Possession Regained**

**7**

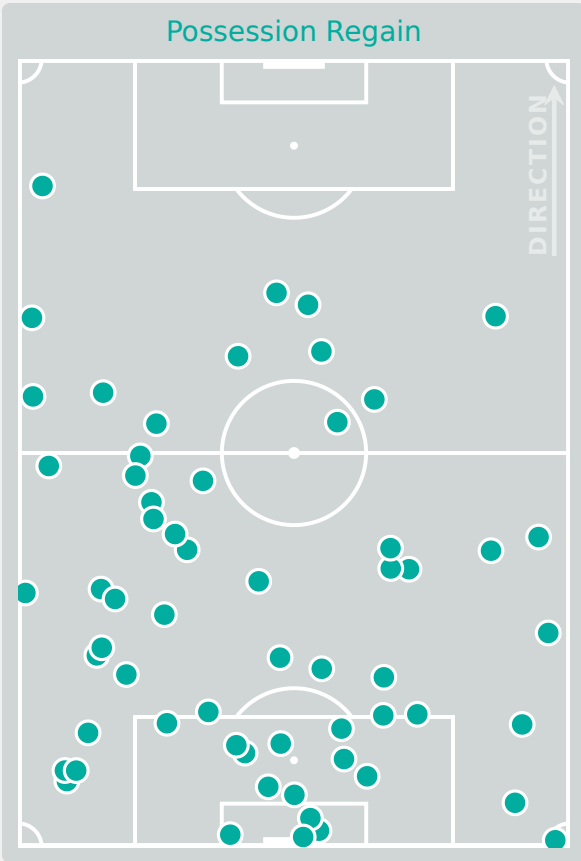
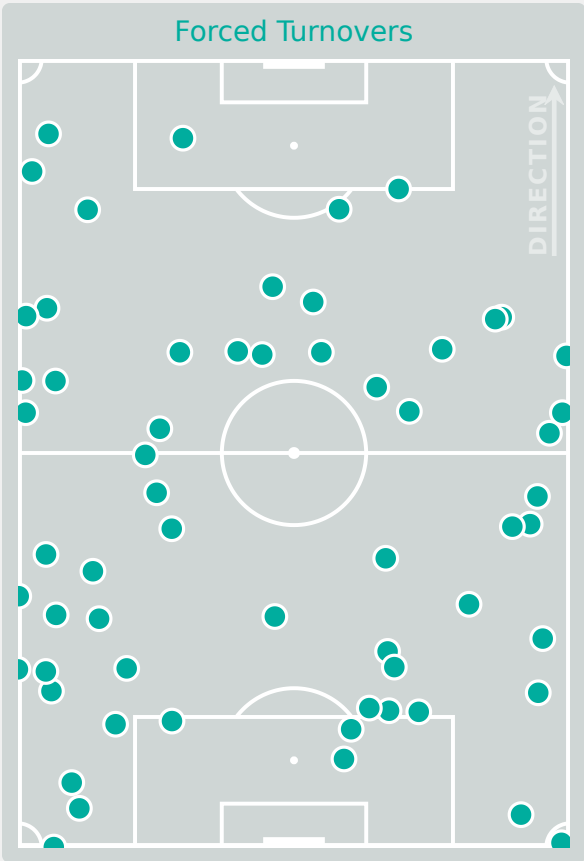
**Interceptions**

**43**

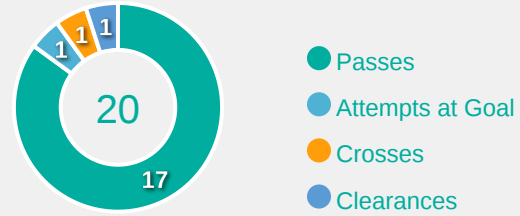
**Tackles**

**2.71**

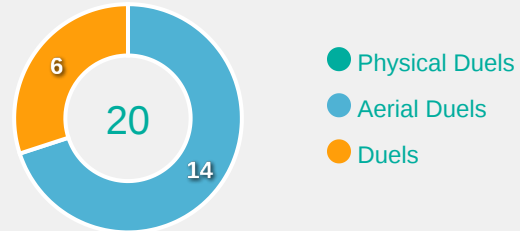
**Possession Actions / Defensive Action**



## Blocks



## Possession Contests



## Most Possession Regains

**9**

**OTTEY Ella**  
LEFT BACK

| #  | Player                | Total Possession Regains |
|----|-----------------------|--------------------------|
| 20 | HENNING Noelle        | 6                        |
| 2  | ARCHIBALD Mya         | 6                        |
| 3  | OTTEY Ella            | 9                        |
| 4  | MARKESINI Zoe         | 4                        |
| 6  | HERNANDEZ GRAY Geneva | 6                        |
| 7  | ALLEN Amanda          | 1                        |
| 8  | JOURDE Florianne      | 6                        |
| 9  | ROSE Nyah             | 1                        |
| 10 | SMITH Olivia          | 2                        |
| 17 | OKEKE Janet           | 7                        |
| 19 | JOHNSON Anaya         | 5                        |
| 11 | CHUKWU Annabelle      | 0                        |
| 13 | WATSON Renee          | 1                        |
| 16 | McBRIDE Ella          | 0                        |
| 18 | BRIGGS Kayla          | 0                        |

# Defensive Actions

**57**

**Forced Turnovers**

**47**

**Possession Regained**

**6**

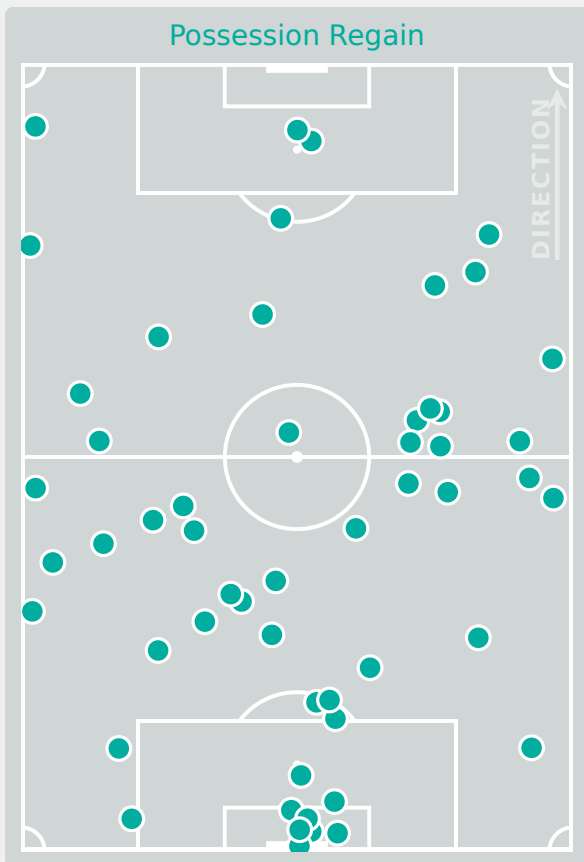
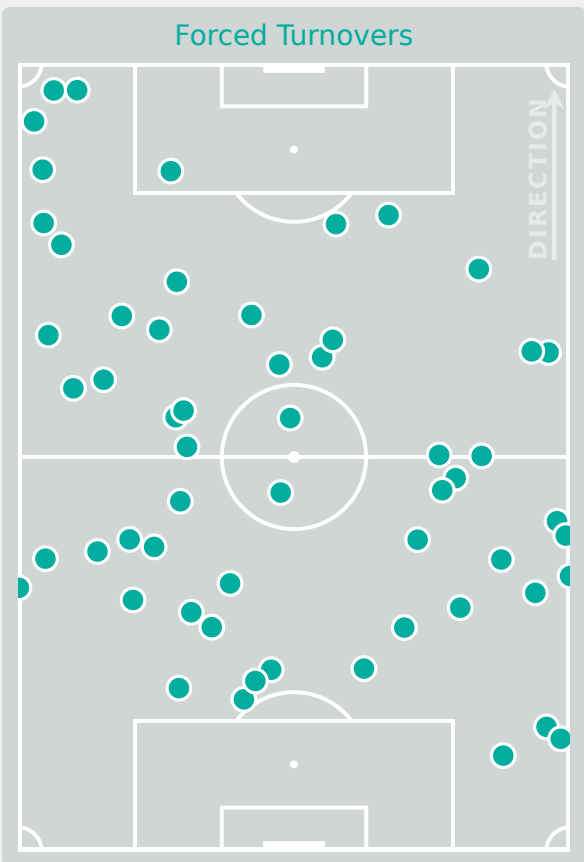
**Interceptions**

**45**

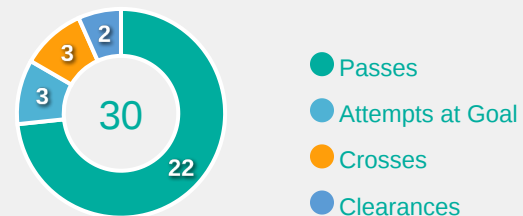
**Tackles**

**2.82**

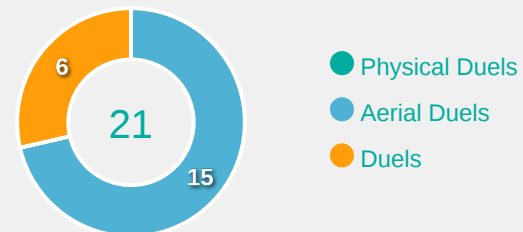
**Possession Actions / Defensive Action**



## Blocks



## Possession Contests



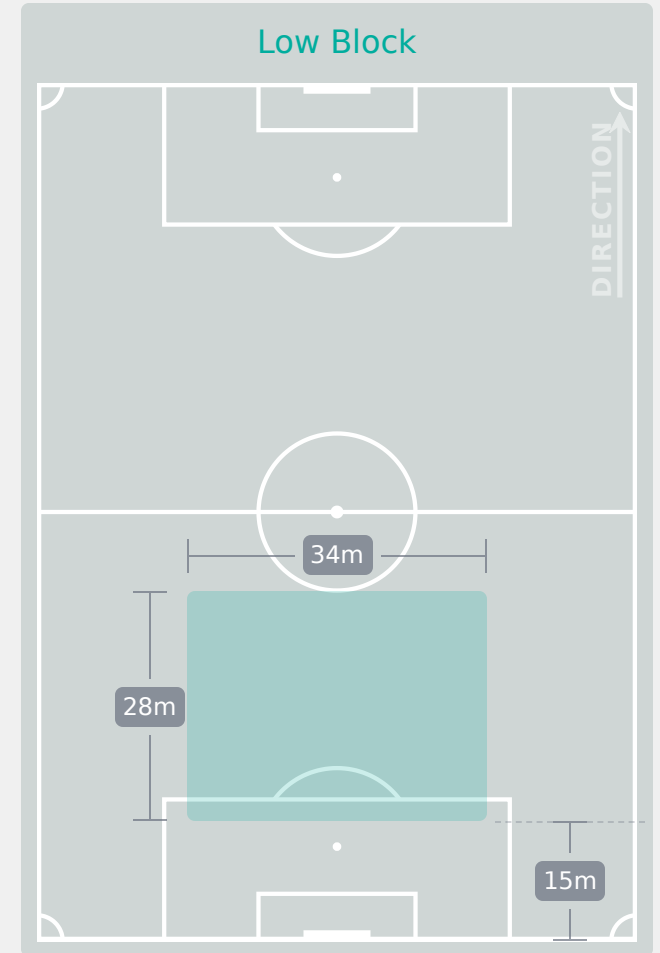
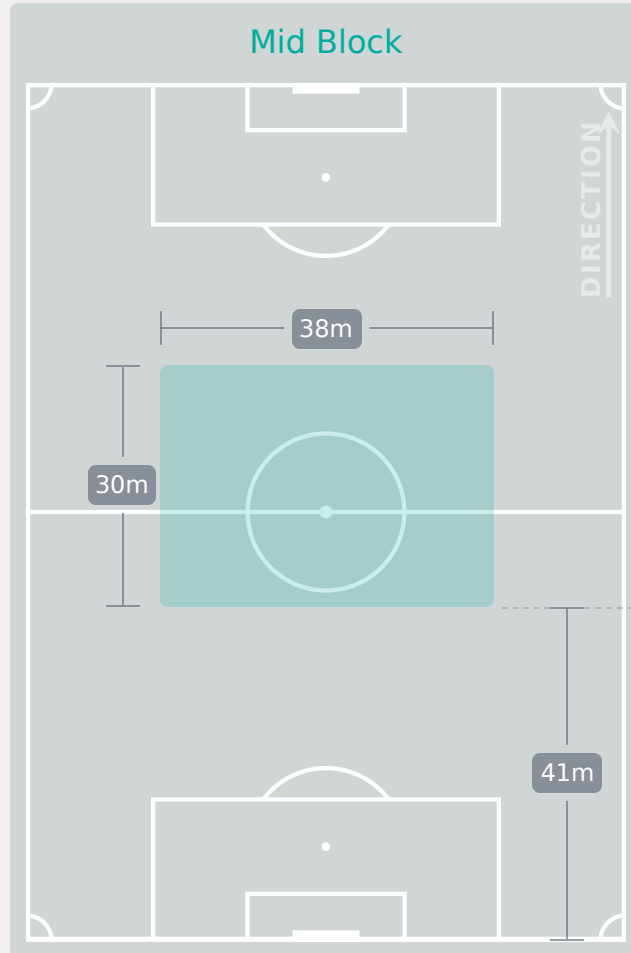
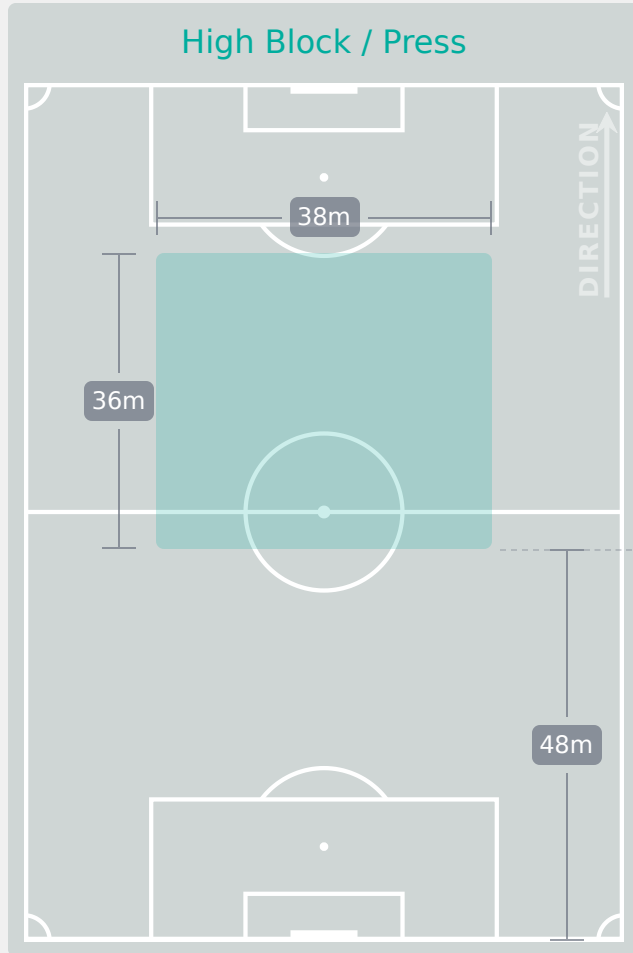
## Most Possession Regains

**10**

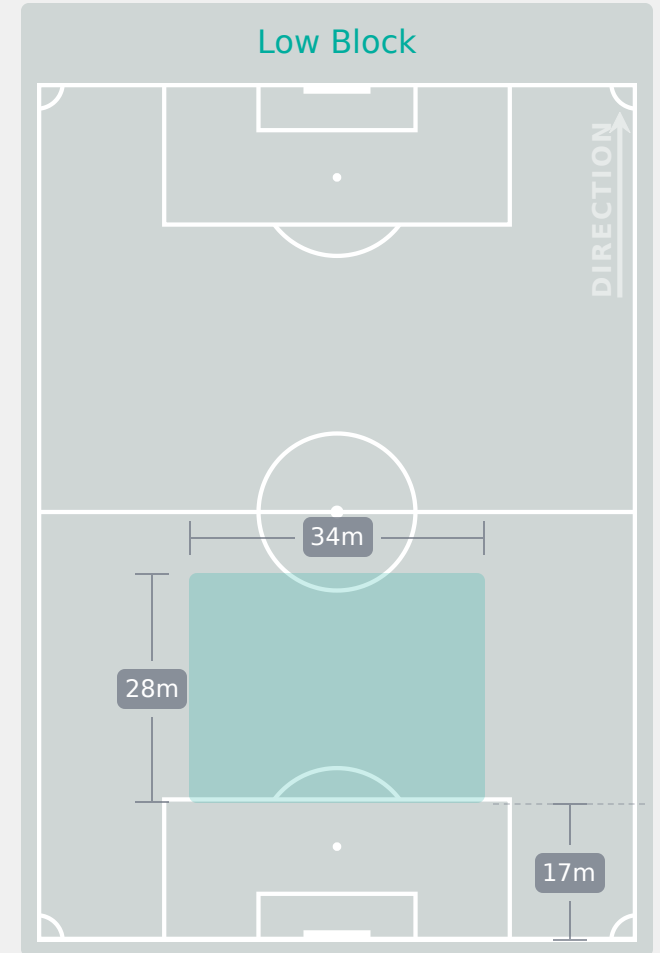
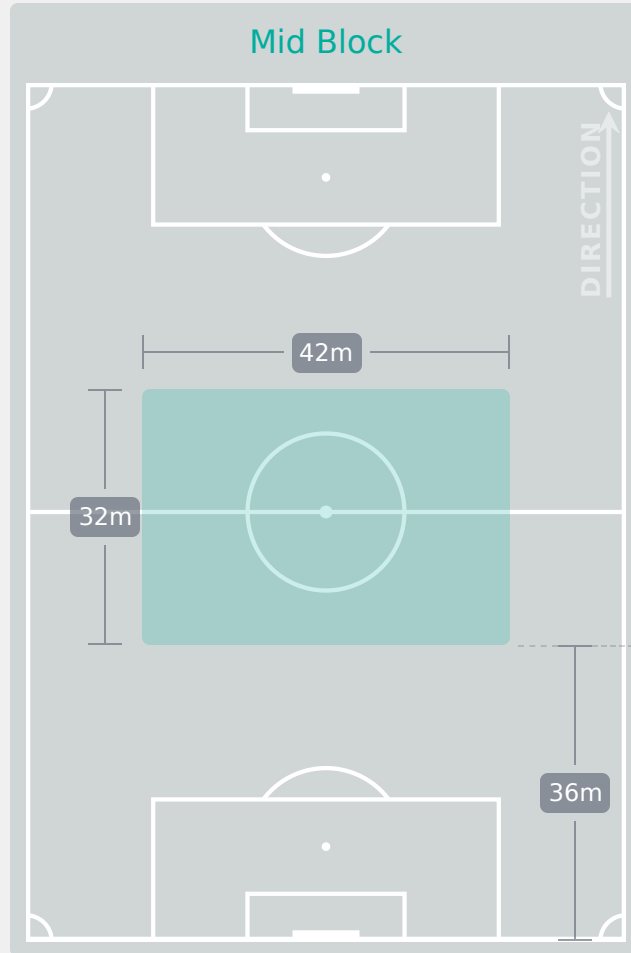
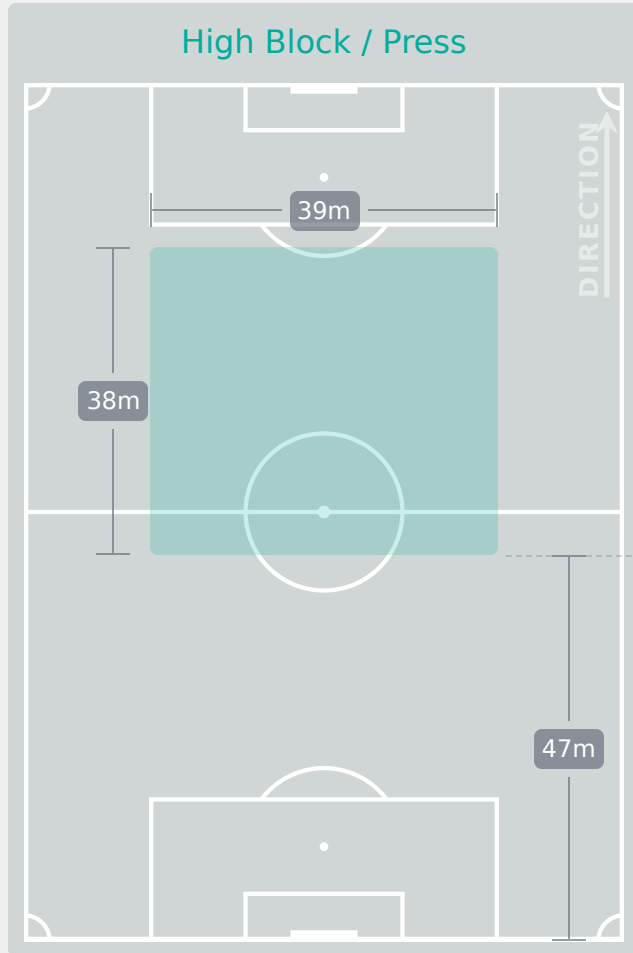
**LARA**  
RIGHT CENTRE MIDFIELD

| #  | Player        | Total Possession Regains |
|----|---------------|--------------------------|
| 1  | RILLARY       | 3                        |
| 2  | GI FERNANDES  | 2                        |
| 3  | GUTA          | 6                        |
| 4  | CARLA         | 7                        |
| 5  | REBECA        | 3                        |
| 6  | ANA GUIMARAES | 4                        |
| 7  | VENDITO       | 4                        |
| 11 | DUDINHA       | 1                        |
| 15 | MARZIA        | 2                        |
| 16 | MILENA        | 1                        |
| 17 | LARA          | 10                       |
| 9  | PRISCILA      | 1                        |
| 13 | RAVENA        | 1                        |
| 18 | FERNANDA      | 0                        |
| 20 | CAROL         | 2                        |

# Defensive Line Height & Team Length



# Defensive Line Height & Team Length

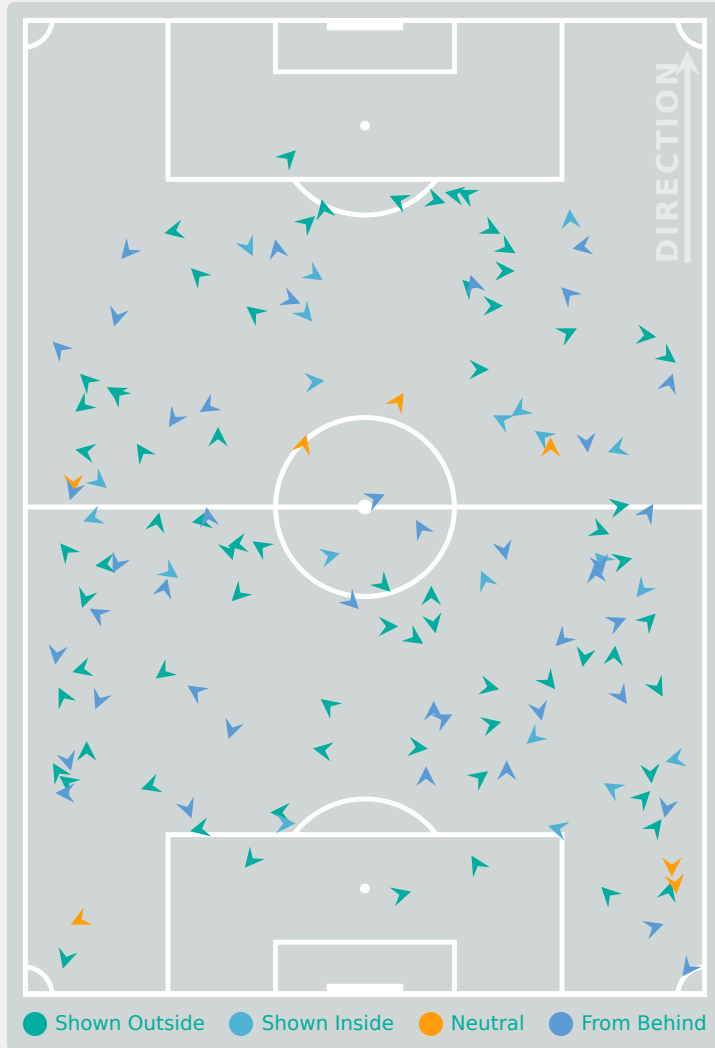


# Defensive Pressure



Canada

Brazil



|       |                            |       |
|-------|----------------------------|-------|
| 142   | Total Pressures            | 202   |
| 43    | Direct Pressures           | 69    |
| 1.92s | Avg Pressure Duration      | 1.82s |
| 60    | Forced Turnovers           | 57    |
| 8s    | Ball Recovery Time         | 7.74s |
| 28    | Pushing on into Pressing   | 53    |
| 80    | Pushing on                 | 117   |
| 21    | Pressing Direction Inside  | 39    |
| 72    | Pressing Direction Outside | 106   |

## Most Direct Pressures

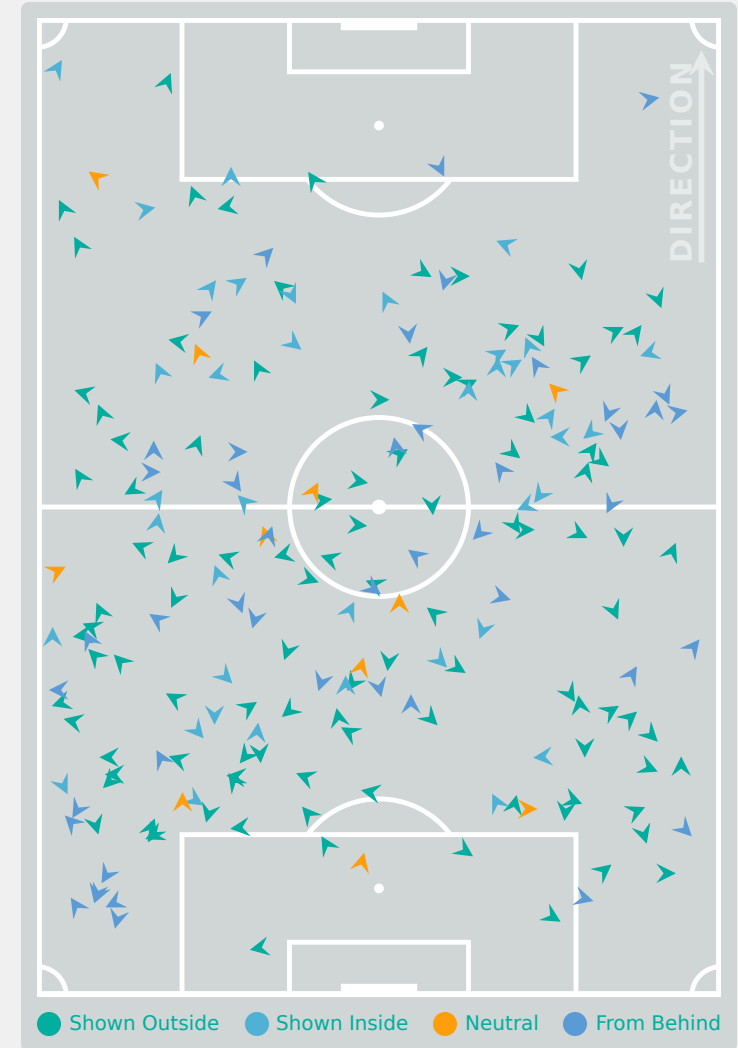
7

**JOHNSON Anaya**  
DEFENSIVE MIDFIELD CENTRE  
RIGHT

## Most Direct Pressures

11

**LARA**  
RIGHT CENTRE MIDFIELD





# GOALKEEPING

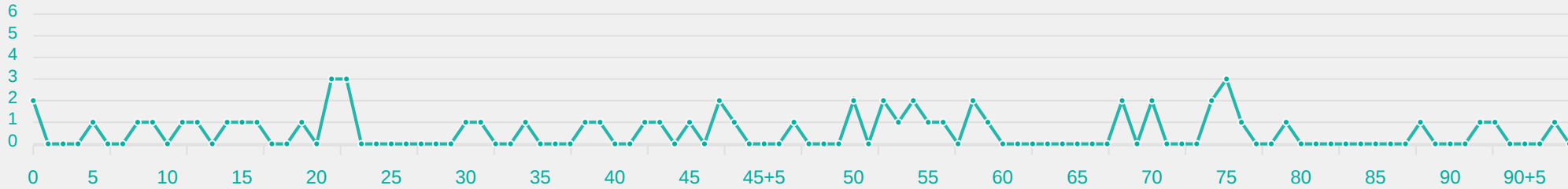
Canada 0 - 2 Brazil

# Goalkeeping Involvement



## Canada

### Canada GK Involvement Timeline



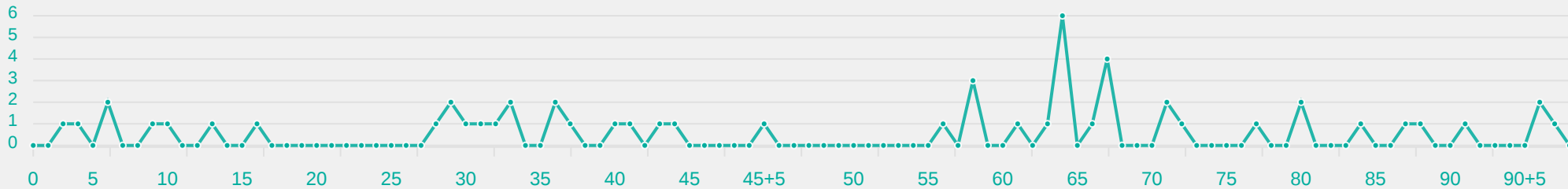
58

Total Involvements



## Brazil

### Brazil GK Involvement Timeline

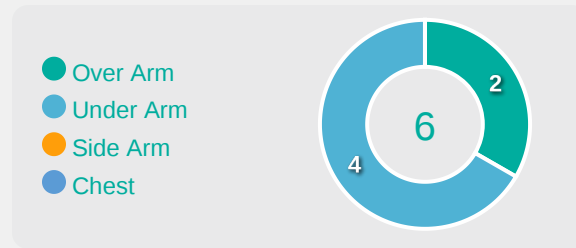
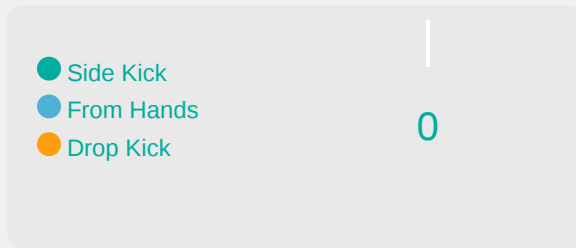
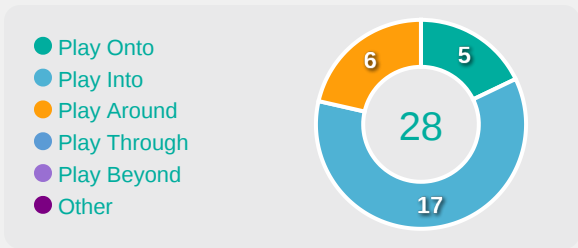
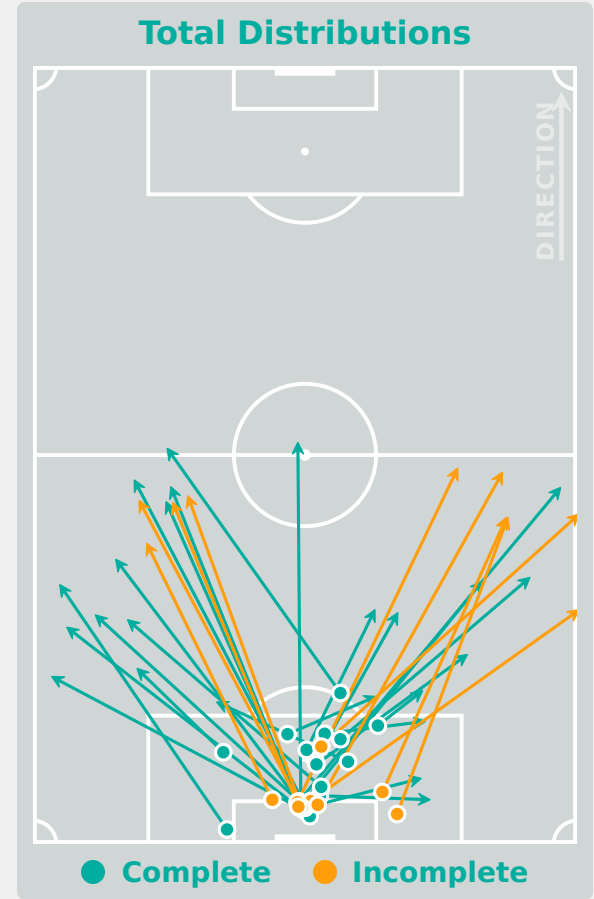
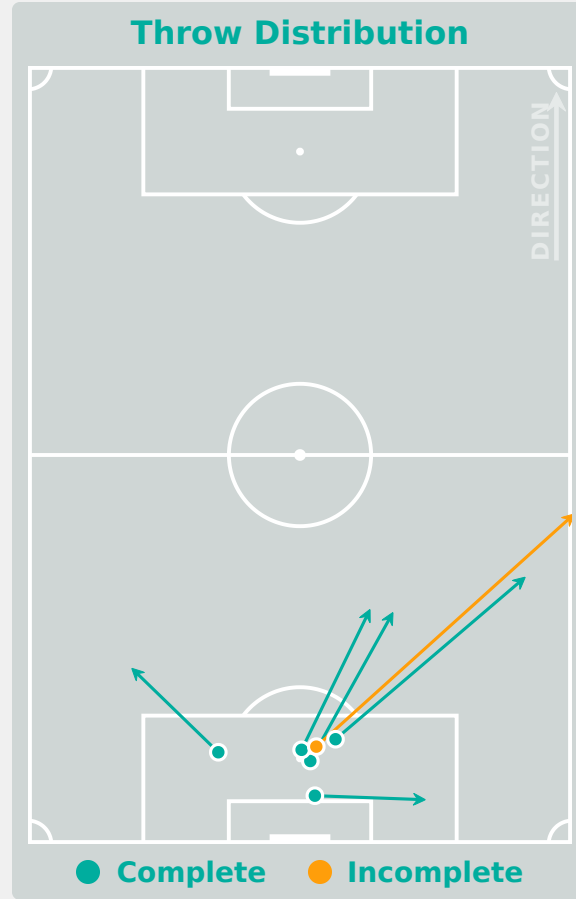
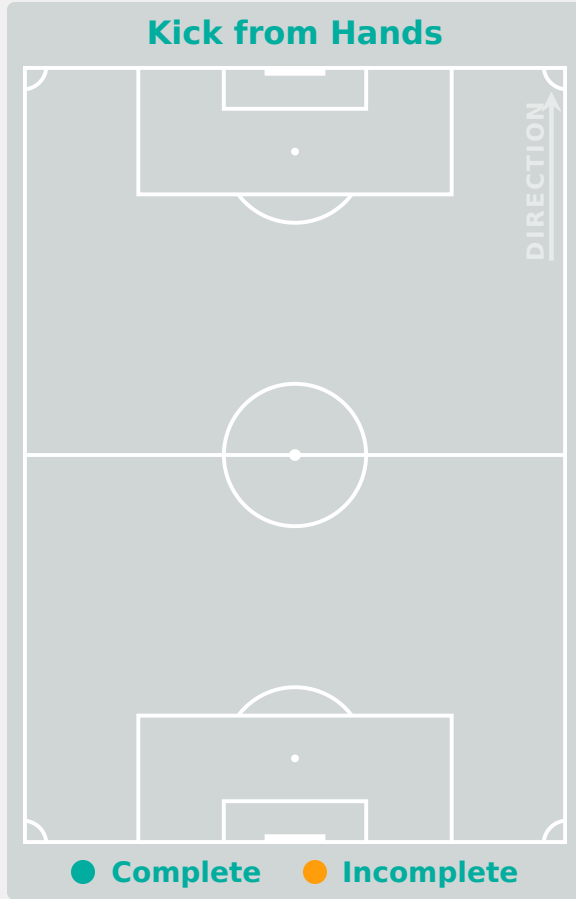
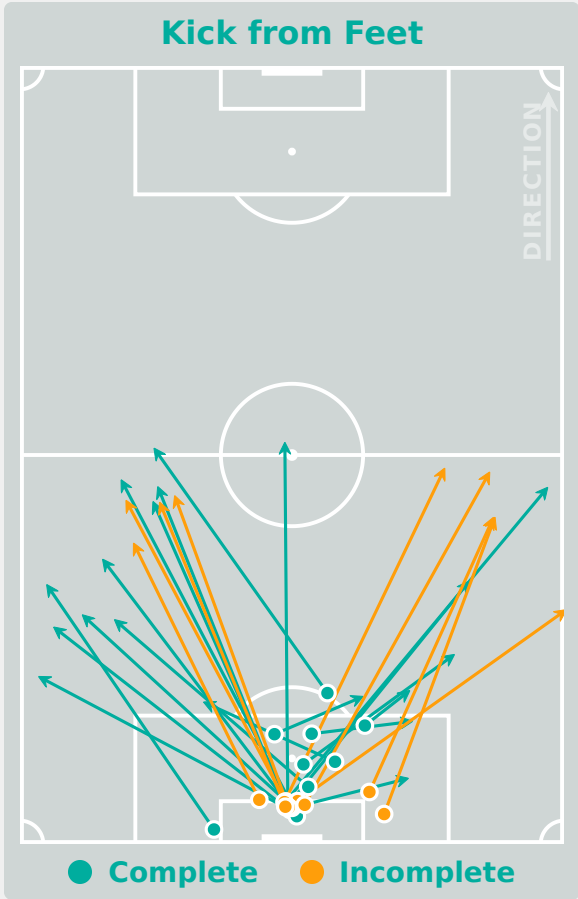


54

Total Involvements



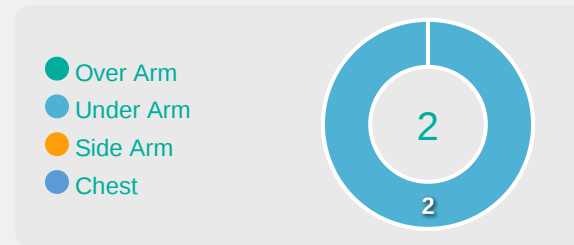
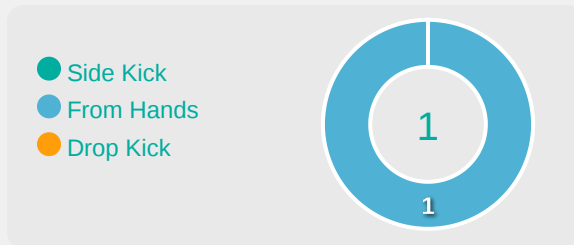
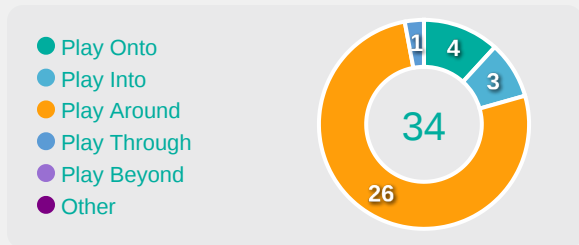
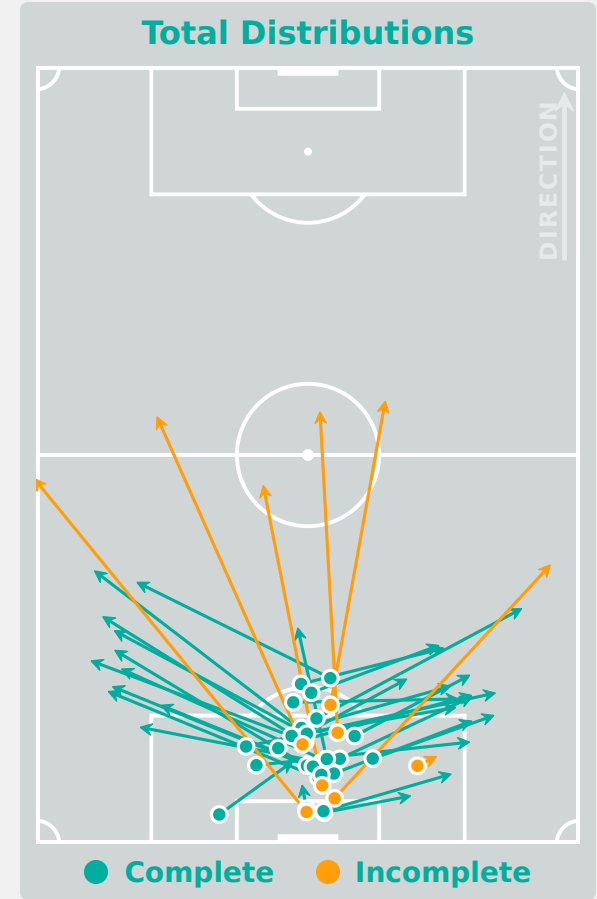
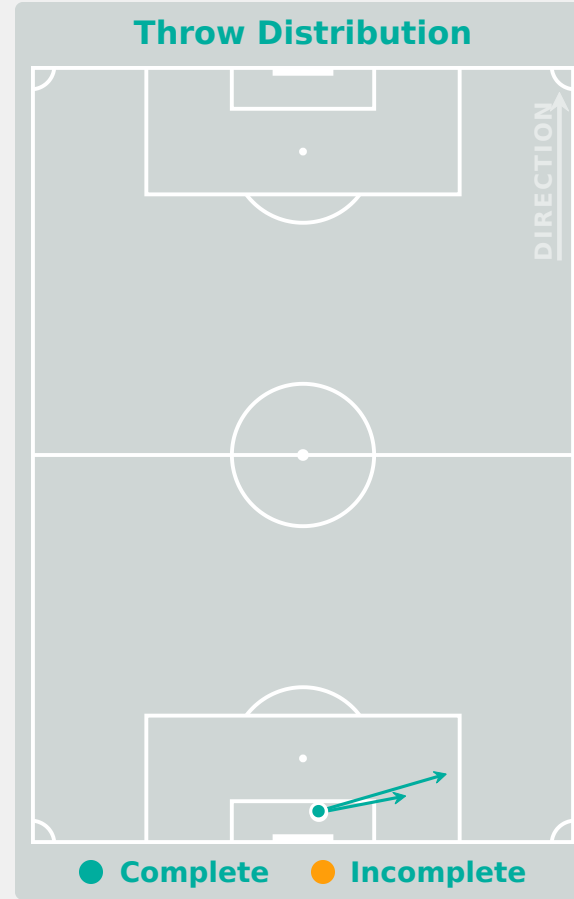
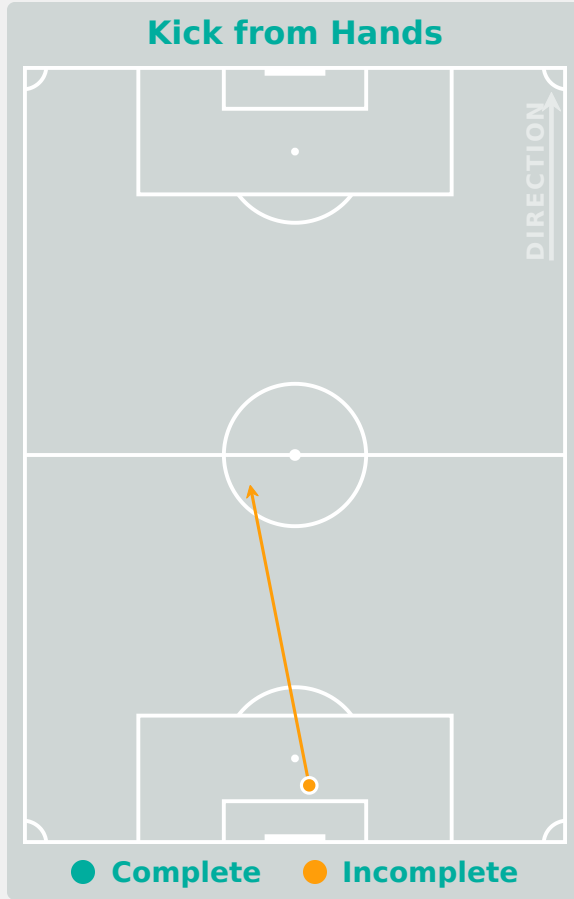
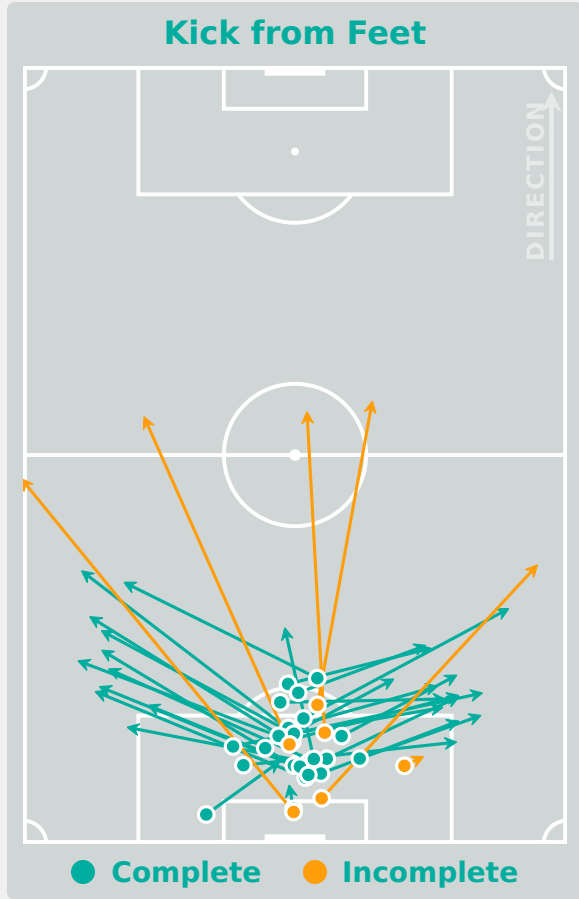
# Goalkeeping Distribution



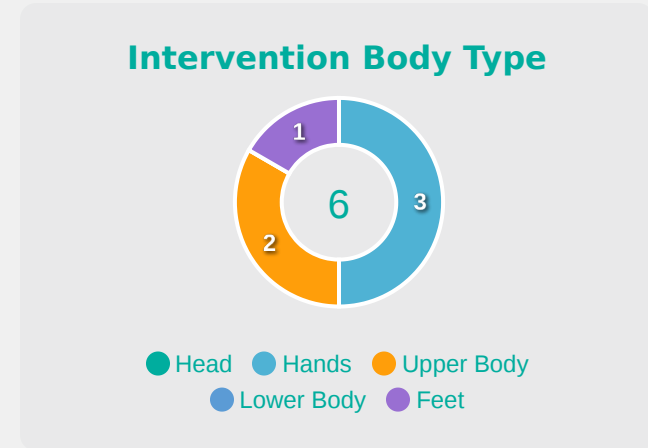
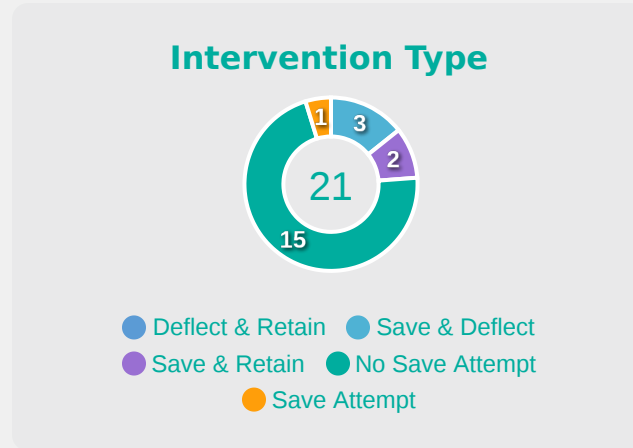
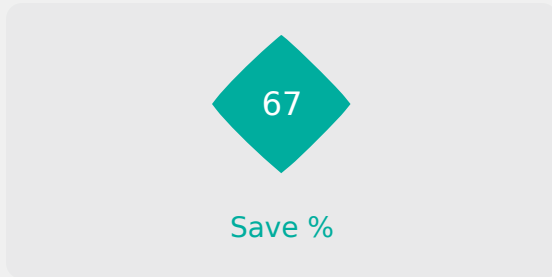
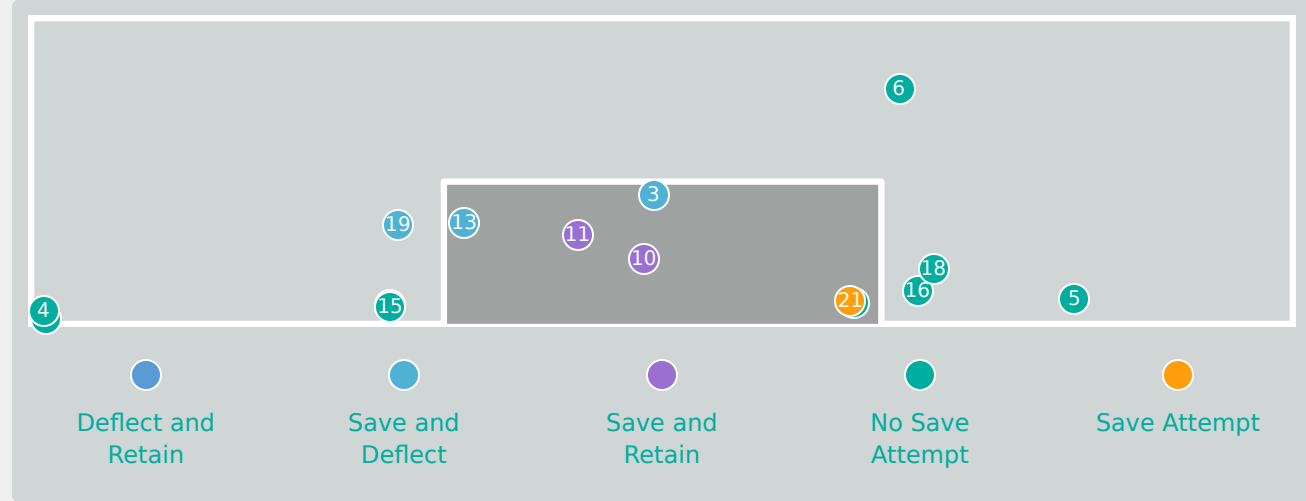
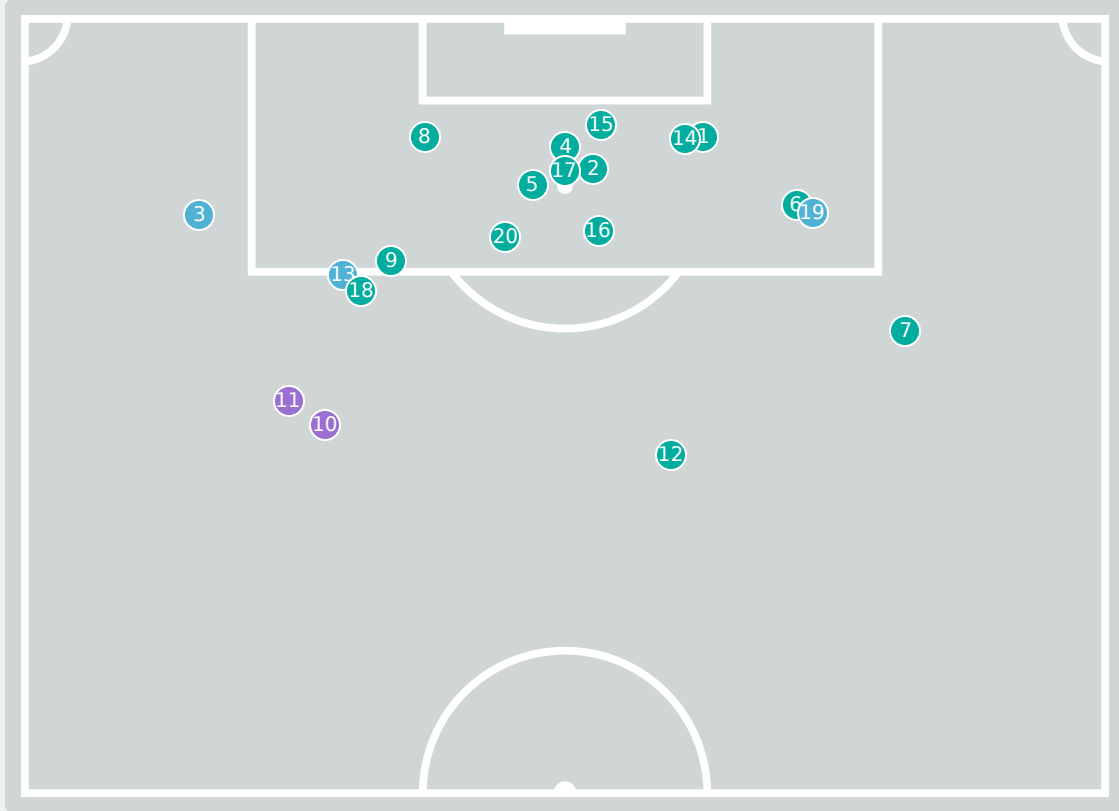
Brazil



# Goalkeeping Distribution

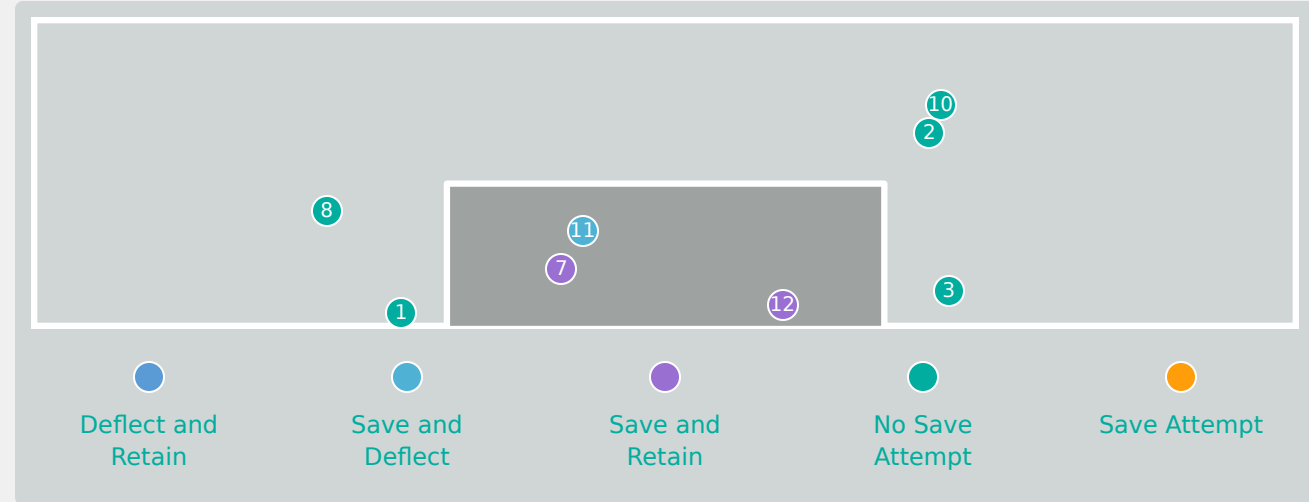
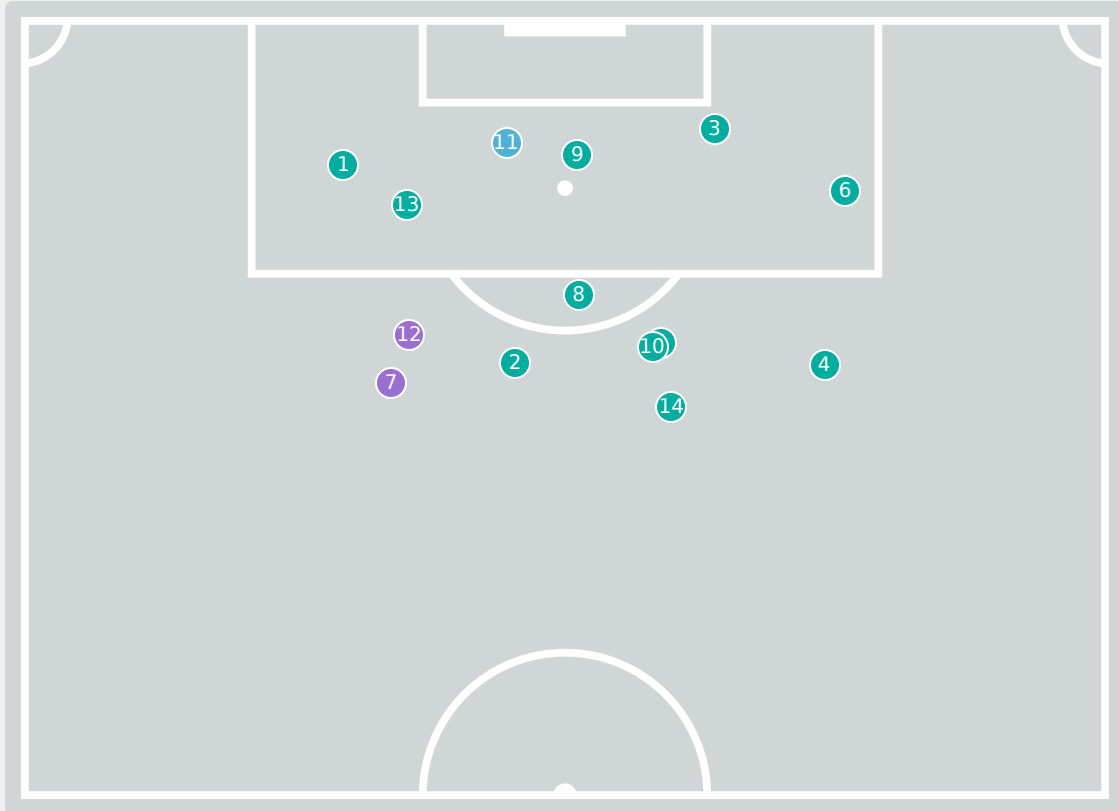


# Goal Prevention



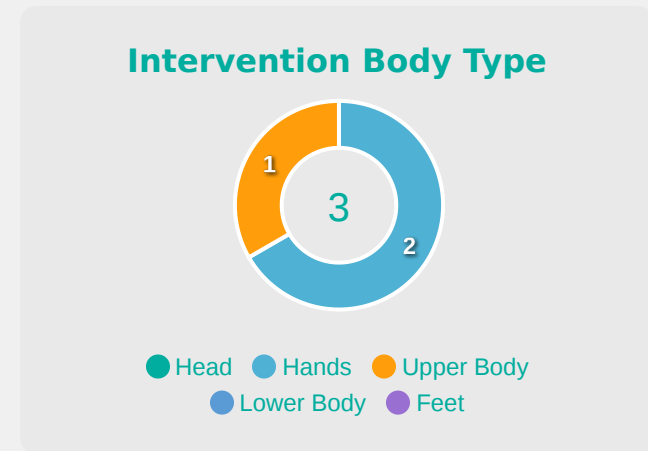
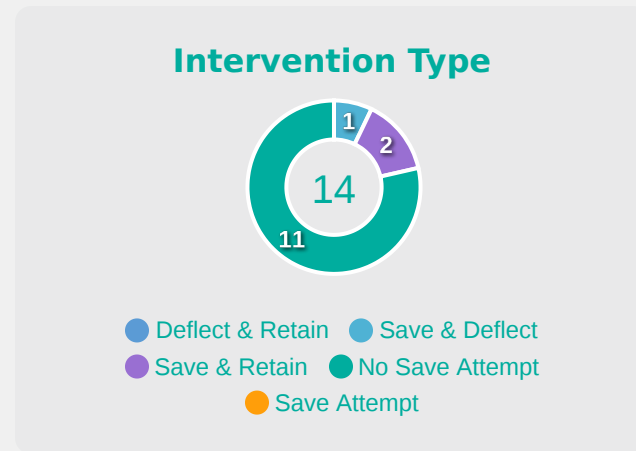
| Total Attempts on Goal Faced | Total Goal Interventions | Save & Retain | Deflect & Retain | Save & Deflect | Save Attempt | No Save Attempt |
|------------------------------|--------------------------|---------------|------------------|----------------|--------------|-----------------|
| 21                           | 5                        | 2             | 0                | 3              | 1            | 15              |

# Goal Prevention



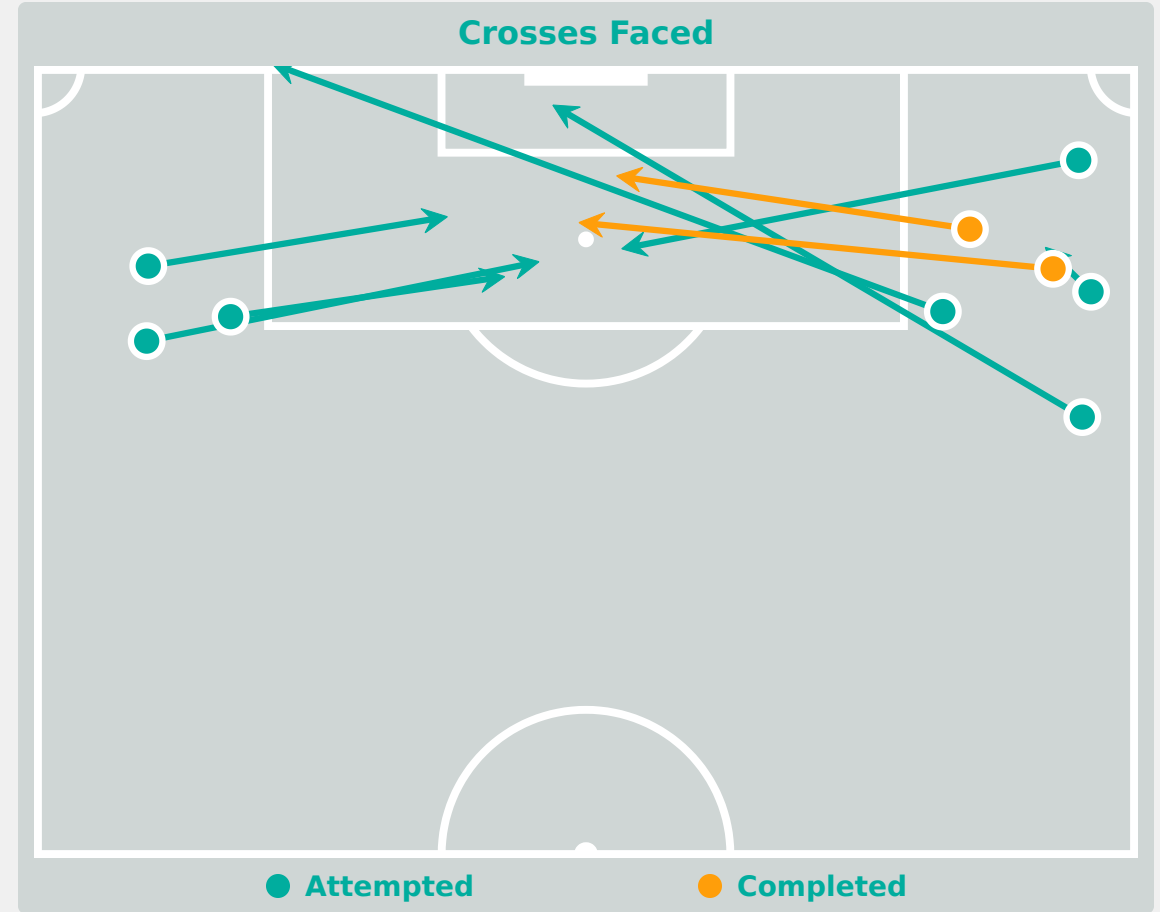
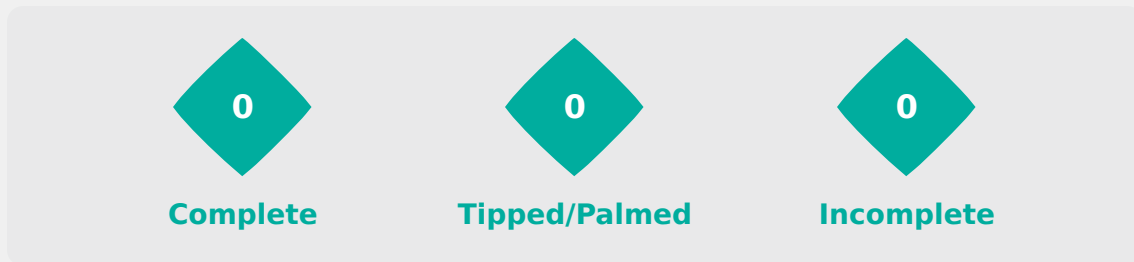
14  
Total Attempts on Goal Faced

100  
Save %



| Total Attempts on Goal Faced | Total Goal Interventions | Save & Retain | Deflect & Retain | Save & Deflect | Save Attempt | No Save Attempt |
|------------------------------|--------------------------|---------------|------------------|----------------|--------------|-----------------|
| 14                           | 3                        | 2             | 0                | 1              | 0            | 11              |

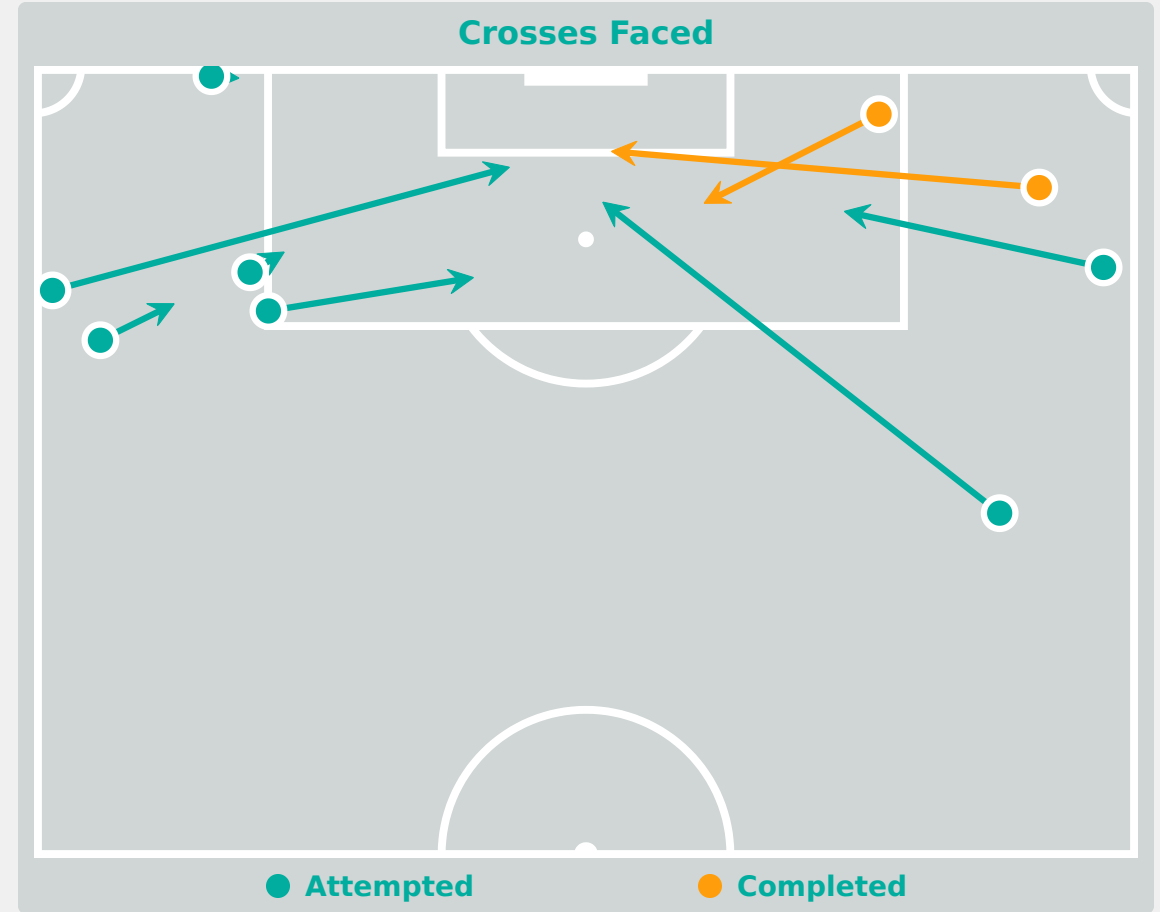
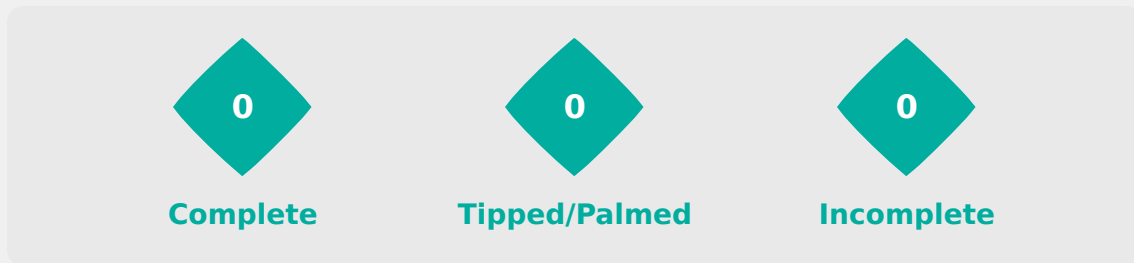
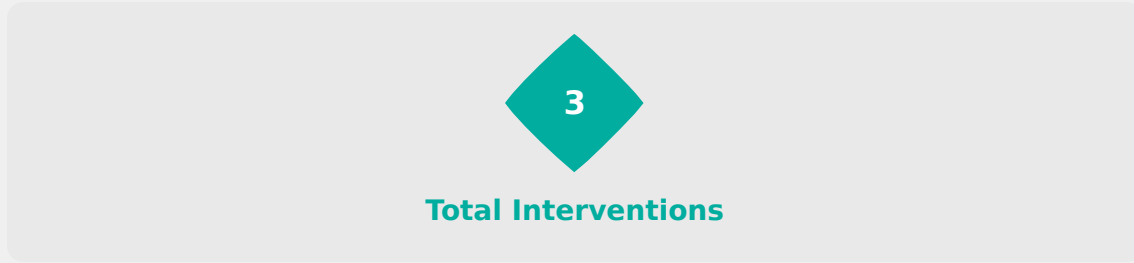
# Aerial Control



**Delivery Types Faced**

| Total | In Swing | Out Swing | Driven | Lofted | Cutback | Push |
|-------|----------|-----------|--------|--------|---------|------|
| 17    | 6        | 4         | 0      | 6      | 0       | 1    |

# Aerial Control



**Delivery Types Faced**

| Total | In Swing | Out Swing | Driven | Lofted | Cutback | Push |
|-------|----------|-----------|--------|--------|---------|------|
| 16    | 4        | 8         | 1      | 2      | 0       | 1    |



# SET PLAYS

Canada 0 - 2 Brazil

# Set Plays



| Free Kicks          |       |
|---------------------|-------|
| Type                | Total |
| Direct              | 7     |
| Direct (on target)  | 0     |
| Direct (off target) | 0     |
| Indirect            | 1     |

| Corners              |                |                 |       |
|----------------------|----------------|-----------------|-------|
| Delivery Type        | From Left Side | From Right Side | Total |
| Direct to Area       | 3              | 3               | 6     |
| Short                | 0              | 0               | 0     |
| Edge of Penalty Area | 0              | 0               | 0     |

| Corners        |       |
|----------------|-------|
| Delivery Style | Total |
| Inswing        | 2     |
| Outswing       | 4     |
| Driven         | 0     |



# Set Plays



| Free Kicks          |       |
|---------------------|-------|
| Type                | Total |
| Direct              | 6     |
| Direct (on target)  | 1     |
| Direct (off target) | 0     |
| Indirect            | 1     |

| Corners              |                |                 |       |
|----------------------|----------------|-----------------|-------|
| Delivery Type        | From Left Side | From Right Side | Total |
| Direct to Area       | 4              | 4               | 8     |
| Short                | 0              | 0               | 0     |
| Edge of Penalty Area | 0              | 0               | 0     |

| Corners        |       |
|----------------|-------|
| Delivery Style | Total |
| Inswing        | 4     |
| Outswing       | 2     |
| Driven         | 0     |



# INDIVIDUAL DATA IN POSSESSION

Canada 0 - 2 Brazil

# In Possession - Distributions

| #  | Player                | Passes Attempted | Passes Completed | Pass Completion % | Switches of Play | Crosses Attempted | Crosses Completed | Line Breaks Attempted | Line Breaks Completed | Line Break Completion % | Ball Progressions | Take Ons | Step Ins | Attempts at Goal | Goals |
|----|-----------------------|------------------|------------------|-------------------|------------------|-------------------|-------------------|-----------------------|-----------------------|-------------------------|-------------------|----------|----------|------------------|-------|
| 20 | HENNING Noelle        | 34               | 24               | 71%               | 0                | 0                 | 0                 | 22                    | 14                    | 64%                     | 0                 | 0        | 0        | 0                | 0     |
| 2  | ARCHIBALD Mya         | 43               | 24               | 56%               | 0                | 3                 | 1                 | 15                    | 7                     | 47%                     | 0                 | 0        | 0        | 0                | 0     |
| 3  | OTTEY Ella            | 39               | 23               | 59%               | 0                | 2                 | 0                 | 16                    | 11                    | 69%                     | 0                 | 0        | 0        | 1                | 0     |
| 4  | MARKESINI Zoe         | 34               | 29               | 85%               | 0                | 0                 | 0                 | 15                    | 12                    | 80%                     | 1                 | 0        | 1        | 1                | 0     |
| 6  | HERNANDEZ GRAY Jeneva | 41               | 33               | 80%               | 0                | 0                 | 0                 | 10                    | 8                     | 80%                     | 0                 | 0        | 0        | 0                | 0     |
| 7  | ALLEN Amanda          | 11               | 7                | 64%               | 0                | 1                 | 1                 | 3                     | 1                     | 33%                     | 2                 | 0        | 2        | 2                | 0     |
| 8  | JOURDE Florianne      | 28               | 19               | 68%               | 0                | 3                 | 0                 | 7                     | 5                     | 71%                     | 1                 | 0        | 1        | 1                | 0     |
| 9  | ROSE Nyah             | 8                | 5                | 62%               | 0                | 0                 | 0                 | 2                     | 1                     | 50%                     | 0                 | 0        | 0        | 2                | 0     |
| 10 | SMITH Olivia          | 22               | 14               | 64%               | 0                | 6                 | 3                 | 4                     | 4                     | 100%                    | 1                 | 1        | 0        | 3                | 0     |
| 17 | OKEKE Janet           | 33               | 26               | 79%               | 0                | 0                 | 0                 | 12                    | 9                     | 75%                     | 0                 | 0        | 0        | 0                | 0     |
| 19 | JOHNSON Anaya         | 28               | 16               | 57%               | 0                | 0                 | 0                 | 7                     | 4                     | 57%                     | 4                 | 3        | 1        | 1                | 0     |
| 11 | CHUKWU Annabelle      | 5                | 4                | 80%               | 0                | 0                 | 0                 | 1                     | 1                     | 100%                    | 0                 | 0        | 0        | 0                | 0     |
| 13 | WATSON Renee          | 2                | 2                | 100%              | 0                | 0                 | 0                 | 0                     | 0                     | 0%                      | 1                 | 1        | 0        | 2                | 0     |
| 16 | McBRIDE Ella          | 6                | 4                | 67%               | 0                | 1                 | 0                 | 3                     | 2                     | 67%                     | 1                 | 1        | 0        | 0                | 0     |
| 18 | BRIGGS Kayla          | 4                | 4                | 100%              | 0                | 0                 | 0                 | 2                     | 2                     | 100%                    | 1                 | 0        | 1        | 1                | 0     |

# In Possession - Offers & Receptions

|    |                       |              | Offer movement types |            |           |           |           |             |                 |
|----|-----------------------|--------------|----------------------|------------|-----------|-----------|-----------|-------------|-----------------|
| #  | Player                | Total Offers | In Front             | In Between | Out to In | In to Out | In Behind | No Movement | Offers Received |
| 20 | HENNING Noelle        | 0            | 0                    | 0          | 0         | 0         | 0         | 0           | 0               |
| 2  | ARCHIBALD Mya         | 3            | 1                    | 0          | 0         | 0         | 1         | 1           | 3               |
| 3  | OTTEY Ella            | 11           | 2                    | 0          | 0         | 0         | 0         | 9           | 5               |
| 4  | MARKESINI Zoe         | 0            | 0                    | 0          | 0         | 0         | 0         | 0           | 0               |
| 6  | HERNANDEZ GRAY Jeneva | 13           | 5                    | 5          | 0         | 1         | 0         | 2           | 4               |
| 7  | ALLEN Amanda          | 19           | 2                    | 2          | 0         | 1         | 9         | 5           | 1               |
| 8  | JOURDE Florianne      | 63           | 6                    | 39         | 2         | 4         | 3         | 9           | 14              |
| 9  | ROSE Nyah             | 16           | 0                    | 9          | 1         | 1         | 4         | 1           | 4               |
| 10 | SMITH Olivia          | 34           | 3                    | 6          | 3         | 1         | 14        | 7           | 12              |
| 17 | OKEKE Janet           | 5            | 0                    | 0          | 0         | 0         | 0         | 5           | 4               |
| 19 | JOHNSON Anaya         | 28           | 14                   | 9          | 4         | 1         | 0         | 0           | 12              |
| 11 | CHUKWU Annabelle      | 5            | 0                    | 0          | 0         | 1         | 4         | 0           | 0               |
| 13 | WATSON Renee          | 16           | 2                    | 1          | 2         | 0         | 7         | 4           | 4               |
| 16 | McBRIDE Ella          | 15           | 7                    | 6          | 0         | 0         | 0         | 2           | 3               |
| 18 | BRIGGS Kayla          | 6            | 1                    | 0          | 0         | 1         | 1         | 3           | 3               |

# In Possession - Distributions

| #  | Player        | Passes Attempted | Passes Completed | Pass Completion % | Switches of Play | Crosses Attempted | Crosses Completed | Line Breaks Attempted | Line Breaks Completed | Line Break Completion % | Ball Progressions | Take Ons | Step Ins | Attempts at Goal | Goals |
|----|---------------|------------------|------------------|-------------------|------------------|-------------------|-------------------|-----------------------|-----------------------|-------------------------|-------------------|----------|----------|------------------|-------|
| 1  | RILLARY       | 37               | 30               | 81%               | 0                | 0                 | 0                 | 8                     | 3                     | 38%                     | 0                 | 0        | 0        | 0                | 0     |
| 2  | GI FERNANDES  | 42               | 32               | 76%               | 0                | 3                 | 1                 | 19                    | 12                    | 63%                     | 7                 | 4        | 3        | 4                | 0     |
| 3  | GUTA          | 49               | 46               | 94%               | 0                | 0                 | 0                 | 16                    | 14                    | 88%                     | 0                 | 0        | 0        | 0                | 0     |
| 4  | CARLA         | 37               | 29               | 78%               | 1                | 0                 | 0                 | 12                    | 9                     | 75%                     | 0                 | 0        | 0        | 1                | 0     |
| 5  | REBECA        | 31               | 26               | 84%               | 2                | 0                 | 0                 | 10                    | 6                     | 60%                     | 1                 | 0        | 1        | 3                | 0     |
| 6  | ANA GUIMARAES | 48               | 38               | 79%               | 0                | 0                 | 0                 | 16                    | 11                    | 69%                     | 0                 | 0        | 0        | 0                | 0     |
| 7  | VENDITO       | 21               | 14               | 67%               | 1                | 0                 | 0                 | 7                     | 4                     | 57%                     | 3                 | 3        | 0        | 2                | 1     |
| 11 | DUDINHA       | 25               | 15               | 60%               | 0                | 2                 | 1                 | 6                     | 5                     | 83%                     | 1                 | 1        | 0        | 6                | 0     |
| 15 | MARZIA        | 19               | 15               | 79%               | 0                | 0                 | 0                 | 4                     | 1                     | 25%                     | 1                 | 1        | 0        | 1                | 0     |
| 16 | MILENA        | 8                | 7                | 88%               | 0                | 3                 | 0                 | 3                     | 1                     | 33%                     | 1                 | 1        | 0        | 1                | 0     |
| 17 | LARA          | 23               | 19               | 83%               | 0                | 8                 | 3                 | 2                     | 0                     | 0%                      | 0                 | 0        | 0        | 0                | 0     |
| 9  | PRISCILA      | 12               | 8                | 67%               | 0                | 0                 | 0                 | 4                     | 2                     | 50%                     | 2                 | 1        | 1        | 2                | 0     |
| 13 | RAVENA        | 1                | 1                | 100%              | 0                | 0                 | 0                 | 1                     | 1                     | 100%                    | 0                 | 0        | 0        | 0                | 0     |
| 18 | FERNANDA      | 4                | 2                | 50%               | 0                | 0                 | 0                 | 2                     | 0                     | 0%                      | 0                 | 0        | 0        | 0                | 0     |
| 20 | CAROL         | 15               | 13               | 87%               | 0                | 1                 | 0                 | 5                     | 3                     | 60%                     | 0                 | 0        | 0        | 1                | 1     |

# In Possession - Offers & Receptions

|    |               |              | Offer movement types |            |           |           |           |             |                 |
|----|---------------|--------------|----------------------|------------|-----------|-----------|-----------|-------------|-----------------|
| #  | Player        | Total Offers | In Front             | In Between | Out to In | In to Out | In Behind | No Movement | Offers Received |
| 1  | RILLARY       | 0            | 0                    | 0          | 0         | 0         | 0         | 0           | 0               |
| 2  | GI FERNANDES  | 23           | 2                    | 1          | 0         | 1         | 3         | 16          | 11              |
| 3  | GUTA          | 2            | 1                    | 0          | 0         | 0         | 0         | 1           | 1               |
| 4  | CARLA         | 1            | 0                    | 0          | 0         | 0         | 0         | 1           | 1               |
| 5  | REBECA        | 4            | 1                    | 1          | 0         | 0         | 0         | 2           | 1               |
| 6  | ANA GUIMARAES | 31           | 4                    | 1          | 0         | 0         | 14        | 12          | 14              |
| 7  | VENDITO       | 14           | 0                    | 12         | 0         | 1         | 1         | 0           | 5               |
| 11 | DUDINHA       | 14           | 1                    | 4          | 0         | 1         | 4         | 4           | 3               |
| 15 | MARZIA        | 2            | 1                    | 0          | 0         | 1         | 0         | 0           | 2               |
| 16 | MILENA        | 9            | 0                    | 3          | 2         | 0         | 2         | 2           | 3               |
| 17 | LARA          | 19           | 3                    | 14         | 0         | 0         | 2         | 0           | 4               |
| 9  | PRISCILA      | 6            | 0                    | 1          | 0         | 1         | 4         | 0           | 3               |
| 13 | RAVENA        | 2            | 2                    | 0          | 0         | 0         | 0         | 0           | 1               |
| 18 | FERNANDA      | 6            | 0                    | 1          | 2         | 1         | 1         | 1           | 1               |
| 20 | CAROL         | 2            | 1                    | 1          | 0         | 0         | 0         | 0           | 1               |



# INDIVIDUAL DATA OUT OF POSSESSION

Canada 0 - 2 Brazil

## Out of Possession



| #  | Player                | Tackles Made / Won | Blocks | Interceptions | Pressing Direct | Pressing Indirect | Duels Won - Aerial | Duels Won - Physical | Possession Contests won | Clearances | Loose Ball Receptions | Pushing On | Pushing On into Pressing | Possession Regains | Possession Interrupted |
|----|-----------------------|--------------------|--------|---------------|-----------------|-------------------|--------------------|----------------------|-------------------------|------------|-----------------------|------------|--------------------------|--------------------|------------------------|
| 20 | HENNING Noelle        | 0 / 0              | 0      | 0             | 0               | 0                 | 0                  | 0                    | 0                       | 0          | 4                     | 0          | 0                        | 6                  | 0                      |
| 2  | ARCHIBALD Mya         | 1 / 1              | 3      | 0             | 4               | 2                 | 0                  | 0                    | 0                       | 4          | 11                    | 2          | 0                        | 6                  | 2                      |
| 3  | OTTEY Ella            | 3 / 1              | 5      | 0             | 1               | 8                 | 2                  | 0                    | 2                       | 9          | 8                     | 19         | 4                        | 9                  | 1                      |
| 4  | MARKESINI Zoe         | 2 / 1              | 3      | 1             | 0               | 0                 | 0                  | 0                    | 0                       | 9          | 5                     | 2          | 0                        | 4                  | 6                      |
| 6  | HERNANDEZ GRAY Jeneva | 7 / 4              | 1      | 1             | 3               | 5                 | 1                  | 0                    | 1                       | 1          | 13                    | 7          | 2                        | 6                  | 2                      |
| 7  | ALLEN Amanda          | 1 / 1              | 0      | 0             | 1               | 6                 | 0                  | 0                    | 1                       | 0          | 7                     | 6          | 1                        | 1                  | 0                      |
| 8  | JOURDE Florianne      | 6 / 5              | 0      | 1             | 6               | 21                | 0                  | 0                    | 0                       | 0          | 7                     | 0          | 0                        | 6                  | 0                      |
| 9  | ROSE Nyah             | 0 / 0              | 2      | 0             | 1               | 8                 | 0                  | 0                    | 0                       | 0          | 1                     | 1          | 1                        | 1                  | 0                      |
| 10 | SMITH Olivia          | 5 / 2              | 1      | 0             | 6               | 20                | 2                  | 0                    | 3                       | 1          | 8                     | 16         | 12                       | 2                  | 1                      |
| 17 | OKEKE Janet           | 5 / 1              | 3      | 3             | 5               | 1                 | 0                  | 0                    | 0                       | 5          | 11                    | 10         | 4                        | 7                  | 6                      |
| 19 | JOHNSON Anaya         | 6 / 2              | 1      | 1             | 7               | 7                 | 0                  | 0                    | 0                       | 3          | 12                    | 5          | 0                        | 5                  | 3                      |
| 11 | CHUKWU Annabelle      | 0 / 0              | 1      | 0             | 0               | 8                 | 0                  | 0                    | 0                       | 0          | 2                     | 4          | 3                        | 0                  | 1                      |
| 13 | WATSON Renee          | 1 / 1              | 0      | 0             | 1               | 4                 | 0                  | 0                    | 0                       | 0          | 2                     | 3          | 1                        | 1                  | 0                      |
| 16 | McBRIDE Ella          | 3 / 0              | 1      | 0             | 5               | 6                 | 0                  | 0                    | 0                       | 0          | 2                     | 0          | 0                        | 0                  | 1                      |
| 18 | BRIGGS Kayla          | 3 / 0              | 0      | 0             | 3               | 3                 | 0                  | 0                    | 0                       | 2          | 1                     | 5          | 0                        | 0                  | 2                      |



## Out of Possession



| #  | Player        | Tackles Made / Won | Blocks | Interceptions | Pressing Direct | Pressing Indirect | Duels Won - Aerial | Duels Won - Physical | Possession Contests won | Clearances | Loose Ball Receptions | Pushing On | Pushing On into Pressing | Possession Regains | Possession Interrupted |
|----|---------------|--------------------|--------|---------------|-----------------|-------------------|--------------------|----------------------|-------------------------|------------|-----------------------|------------|--------------------------|--------------------|------------------------|
| 1  | RILLARY       | 0 / 0              | 0      | 0             | 0               | 0                 | 0                  | 0                    | 0                       | 0          | 3                     | 0          | 0                        | 3                  | 0                      |
| 2  | GI FERNANDES  | 7 / 1              | 6      | 0             | 7               | 11                | 0                  | 0                    | 0                       | 4          | 7                     | 12         | 6                        | 2                  | 7                      |
| 3  | GUTA          | 4 / 1              | 0      | 1             | 3               | 2                 | 1                  | 0                    | 1                       | 10         | 5                     | 7          | 2                        | 6                  | 5                      |
| 4  | CARLA         | 4 / 2              | 3      | 0             | 6               | 4                 | 0                  | 0                    | 1                       | 14         | 3                     | 17         | 4                        | 7                  | 7                      |
| 5  | REBECA        | 4 / 0              | 3      | 0             | 4               | 2                 | 4                  | 0                    | 5                       | 10         | 9                     | 2          | 0                        | 3                  | 8                      |
| 6  | ANA GUIMARAES | 4 / 2              | 1      | 1             | 4               | 24                | 0                  | 0                    | 0                       | 0          | 9                     | 15         | 9                        | 4                  | 1                      |
| 7  | VENDITO       | 3 / 2              | 2      | 1             | 6               | 9                 | 0                  | 0                    | 0                       | 0          | 6                     | 9          | 4                        | 4                  | 1                      |
| 11 | DUDINHA       | 2 / 1              | 3      | 0             | 5               | 20                | 0                  | 0                    | 1                       | 0          | 12                    | 9          | 6                        | 1                  | 3                      |
| 15 | MARZIA        | 2 / 0              | 1      | 1             | 10              | 19                | 1                  | 0                    | 1                       | 1          | 7                     | 10         | 5                        | 2                  | 3                      |
| 16 | MILENA        | 1 / 1              | 3      | 0             | 1               | 9                 | 0                  | 0                    | 0                       | 0          | 4                     | 2          | 2                        | 1                  | 2                      |
| 17 | LARA          | 7 / 3              | 6      | 1             | 11              | 23                | 0                  | 0                    | 0                       | 5          | 7                     | 27         | 10                       | 10                 | 5                      |
| 9  | PRISCILA      | 3 / 0              | 2      | 0             | 6               | 3                 | 0                  | 0                    | 1                       | 0          | 4                     | 0          | 0                        | 1                  | 3                      |
| 13 | RAVENA        | 1 / 0              | 0      | 0             | 2               | 0                 | 1                  | 0                    | 1                       | 1          | 1                     | 2          | 1                        | 1                  | 1                      |
| 18 | FERNANDA      | 0 / 0              | 0      | 0             | 2               | 2                 | 0                  | 0                    | 0                       | 0          | 0                     | 2          | 1                        | 0                  | 0                      |
| 20 | CAROL         | 3 / 0              | 0      | 1             | 2               | 5                 | 2                  | 0                    | 2                       | 1          | 5                     | 3          | 3                        | 2                  | 2                      |



# INDIVIDUAL DATA PHYSICAL

Canada 0 - 2 Brazil

## Physical Data



| #  | Player                | Total Distance (m) | Zone 1: 0-7 km/h (m) | Zone 2: 7-15 km/h (m) | Zone 3: 15-20 km/h (m) | Zone 4: 20-25 km/h (m) | Zone 5: 25+ km/h (m) | High Speed Runs (Zone 4) | Sprints (Zone 5) | Top Speed (km/h) |
|----|-----------------------|--------------------|----------------------|-----------------------|------------------------|------------------------|----------------------|--------------------------|------------------|------------------|
| 20 | HENNING Noelle        | 4946.7             | 3459.4               | 1277.6                | 201.0                  | 8.7                    | 0                    | 2.0                      | 0                | 21.1             |
| 2  | ARCHIBALD Mya         | 10702.2            | 3684.7               | 5236.7                | 1274.0                 | 452.4                  | 54.4                 | 41.0                     | 4.0              | 27.2             |
| 3  | OTTEY Ella            | 9801.6             | 3666.6               | 4592.7                | 1024.4                 | 470.7                  | 47.3                 | 45.0                     | 5.0              | 28.0             |
| 4  | MARKESINI Zoe         | 9156.8             | 3968.0               | 4285.4                | 724.9                  | 137.5                  | 41.0                 | 16.0                     | 2.0              | 28.2             |
| 6  | HERNANDEZ GRAY Jeneva | 9857.1             | 3827.4               | 4202.5                | 1462.4                 | 347.1                  | 17.7                 | 37.0                     | 1.0              | 26.2             |
| 7  | ALLEN Amanda          | 7534.7             | 2426.1               | 3697.5                | 980.4                  | 365.5                  | 65.1                 | 43.0                     | 9.0              | 28.2             |
| 8  | JOURDE Florianne      | 11526.8            | 3728.7               | 5810.4                | 1547.7                 | 440.0                  | 0                    | 38.0                     | 0                | 25.0             |
| 9  | ROSE Nyah             | 4444.7             | 2007.7               | 1875.6                | 424.9                  | 117.3                  | 19.2                 | 9.0                      | 1.0              | 29.4             |
| 10 | SMITH Olivia          | 7392.0             | 3103.4               | 3166.1                | 850.5                  | 250.3                  | 21.6                 | 25.0                     | 2.0              | 27.2             |
| 17 | OKEKE Janet           | 8995.3             | 3465.1               | 4375.9                | 850.4                  | 269.6                  | 34.2                 | 27.0                     | 3.0              | 29.1             |
| 19 | JOHNSON Anaya         | 6482.7             | 2347.7               | 3325.5                | 710.3                  | 84.5                   | 14.7                 | 14.0                     | 2.0              | 28.1             |
| 11 | CHUKWU Annabelle      | 4877.4             | 2187.9               | 2027.5                | 486.2                  | 164.7                  | 11.1                 | 18.0                     | 1.0              | 27.5             |
| 13 | WATSON Renee          | 2390.1             | 794.7                | 1150.6                | 305.6                  | 113.2                  | 26.1                 | 11.0                     | 2.0              | 28.2             |
| 16 | McBRIDE Ella          | 3954.5             | 1118.1               | 2083.5                | 562.3                  | 165.2                  | 25.5                 | 16.0                     | 2.0              | 27.0             |
| 18 | BRIGGS Kayla          | 4026.7             | 1268.7               | 1953.5                | 656.9                  | 140.5                  | 7.1                  | 16.0                     | 1.0              | 25.6             |

## Physical Data



| #  | Player        | Total Distance (m) | Zone 1: 0-7 km/h (m) | Zone 2: 7-15 km/h (m) | Zone 3: 15-20 km/h (m) | Zone 4: 20-25 km/h (m) | Zone 5: 25+ km/h (m) | High Speed Runs (Zone 4) | Sprints (Zone 5) | Top Speed (km/h) |
|----|---------------|--------------------|----------------------|-----------------------|------------------------|------------------------|----------------------|--------------------------|------------------|------------------|
| 1  | RILLARY       | 5650.5             | 4383.3               | 1110.6                | 127.5                  | 29.1                   | 0                    | 4.0                      | 0                | 22.5             |
| 2  | GI FERNANDES  | 9581.8             | 3302.0               | 4283.0                | 1408.1                 | 528.6                  | 60.0                 | 51.0                     | 3.0              | 29.0             |
| 3  | GUTA          | 10047.9            | 3909.0               | 4893.8                | 1001.5                 | 240.2                  | 3.5                  | 22.0                     | 1.0              | 25.2             |
| 4  | CARLA         | 9318.5             | 4297.0               | 3976.6                | 839.6                  | 198.2                  | 7.1                  | 22.0                     | 1.0              | 25.5             |
| 5  | REBECA        | 10396.9            | 3611.9               | 5451.5                | 1034.1                 | 281.6                  | 17.8                 | 30.0                     | 3.0              | 26.2             |
| 6  | ANA GUIMARAES | 9596.2             | 3950.2               | 3768.8                | 1403.5                 | 437.6                  | 36.2                 | 48.0                     | 5.0              | 26.7             |
| 7  | VENDITO       | 8017.1             | 3956.4               | 3002.9                | 810.5                  | 222.4                  | 24.9                 | 28.0                     | 3.0              | 26.1             |
| 11 | DUDINHA       | 8337.8             | 4058.9               | 2545.7                | 1031.8                 | 495.4                  | 206.0                | 57.0                     | 13.0             | 32.1             |
| 15 | MARZIA        | 6053.1             | 2299.7               | 2908.6                | 700.0                  | 144.8                  | 0                    | 20.0                     | 0                | 24.1             |
| 16 | MILENA        | 4906.4             | 1902.3               | 1943.0                | 704.1                  | 305.4                  | 51.6                 | 37.0                     | 6.0              | 28.2             |
| 17 | LARA          | 10733.3            | 4118.1               | 4923.6                | 1245.5                 | 387.6                  | 58.4                 | 47.0                     | 6.0              | 27.8             |
| 9  | PRISCILA      | 5208.8             | 2171.8               | 2059.2                | 642.0                  | 234.1                  | 101.7                | 27.0                     | 6.0              | 29.9             |
| 13 | RAVENA        | 821.1              | 246.5                | 430.8                 | 138.2                  | 5.6                    | 0                    | 1.0                      | 0                | 20.5             |
| 18 | FERNANDA      | 1494.0             | 488.8                | 609.7                 | 283.5                  | 85.6                   | 26.3                 | 9.0                      | 1.0              | 27.6             |
| 20 | CAROL         | 4218.7             | 1741.3               | 1981.1                | 395.2                  | 86.7                   | 14.4                 | 8.0                      | 1.0              | 26.2             |

