

FIFA®

W-OFT 2024

USA 4 - 1 Germany

Group B - Match 9

28 July 2024

21:00 Kick Off

Stade de Marseille



POST MATCH SUMMARY REPORT

Match Summary - Teams

USA



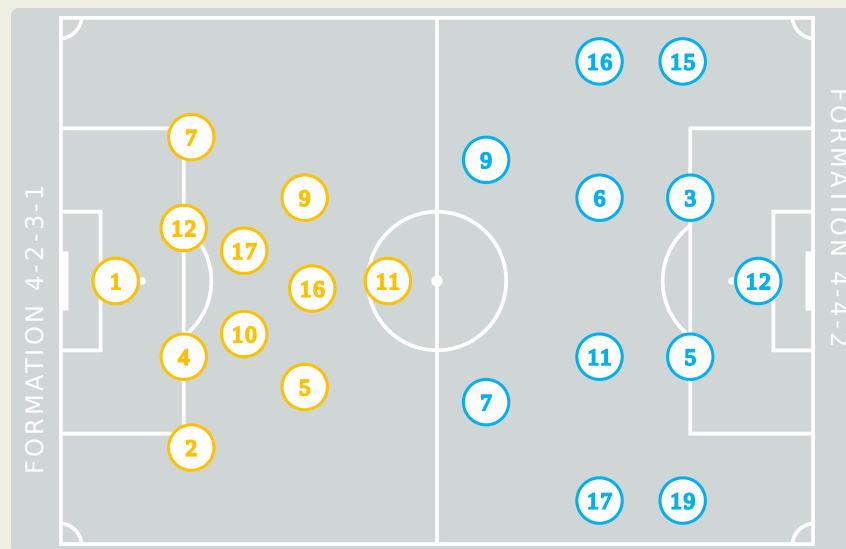
Germany

STARTING

- 1 GK NAEHER Alyssa
- 2 DF FOX Emily ↓ 90+2'
- 4 DF GIRMA Naomi
- 5 FW RODMAN Trinity ↓ 90+2'
- 7 FW DUNN Crystal
- 9 FW SWANSON Mallory ⚽ 26'
- 10 MF HORAN Lindsey
- 11 FW SMITH Sophia ⚽ 10' ⚽ 44' ↓ 85'
- 12 DF DAVIDSON Tierna ↓ 43'
- 16 MF LAVELLE Rose
- 17 MF COFFEY Samantha ■ 22'

SUBSTITUTES

- 18 GK MURPHY Casey
- 22 GK CAMPBELL Jane
- 3 MF ALBERT Korbin
- 6 DF KRUEGER Casey ↑ 90+2'
- 8 FW WILLIAMS Lynn ↑ 85' ⚽ 89'
- 13 DF NIGHSWONGER Jenna ↑ 90+2'
- 14 MF SONNETT Emily ↑ 43'
- 15 FW SHAW Jaedyn
- 19 MF HERSHFELT Hal
- 20 FW BETHUNE Croix
- 21 DF SAMS Emily



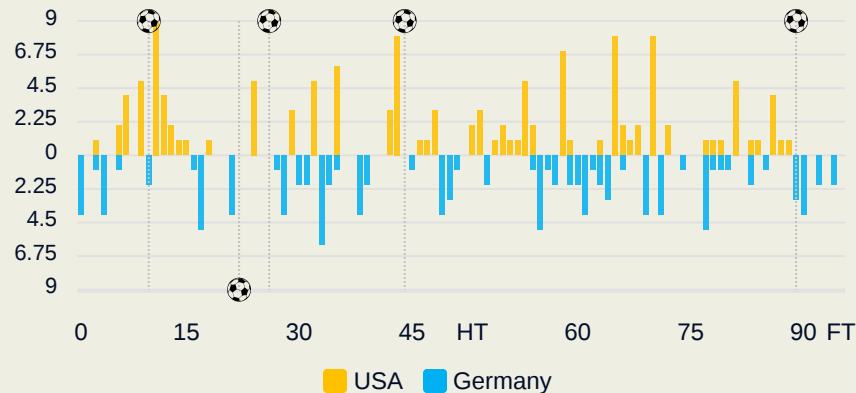
STARTING

- BERGER Ann-Katrin GK 12
- 18' HENDRICH Kathrin DF 3
- HEGERING Marina DF 5
- MINGE Janina MF 6
- SCHUELLER Lea FW 7
- ↓ 68' NUESKEN Sjoeke MF 9
- ↓ 77' POPP Alexandra FW 11
- ⚽ 22' GWINN Giulia DF 15
- BRAND Jule MF 16
- BUEHL Klara MF 17
- RAUCH Felicitas DF 19

SUBSTITUTES

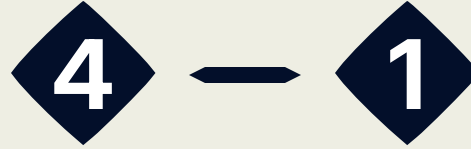
- FROHMS Merle GK 1
- JOHANNES Stina GK 22
- LINDER Sarai DF 2
- SCHULZE SOLANO Bibiane DF 4
- ↑ 68' LOHMANN Sydney MF 8
- FREIGANG Laura FW 10
- DOORSOUN Sara DF 13
- ↑ 77' SENSS Elisa MF 14
- ENDEMANN Vivien MF 18
- WOLTER Pia-Sophie DF 20
- ANYOMI Nicole FW 21

Distribution in the Final Third



Match Summary - Key Statistics

USA



Germany

Possession

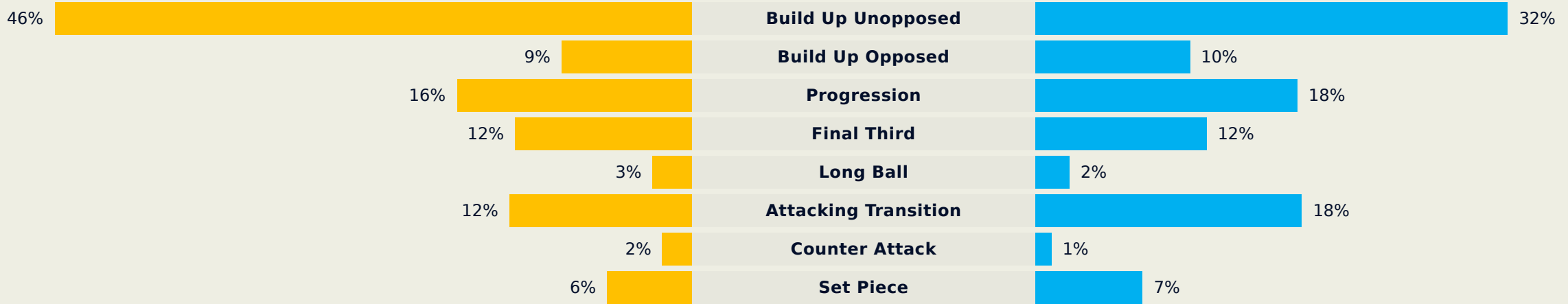
Total	52.9%	10%	37.1%	Total
4	Goals			1
13 (8)	Attempts at Goal (On Target)			13 (7)
513 (433)	Total Passes (Complete)			405 (351)
84 %	Pass Completion %			87 %
98	Completed Line Breaks			84
13	Defensive Line Breaks			2
100	Receptions in the Final Third			99
18	Crosses			16
16	Ball Progressions			5
157 (37)	Defensive Pressures Applied (Direct Pressures)			189 (43)
45	Forced Turnovers			38
82	Second Balls			59
116.5 km	Total Distance Covered			115.6 km
5.5 km	Zone 4 - Low Speed Sprinting: 20-25 km/h			5.2 km

USA

Phases of Play

Germany

IN POSSESSION



OUT OF POSSESSION



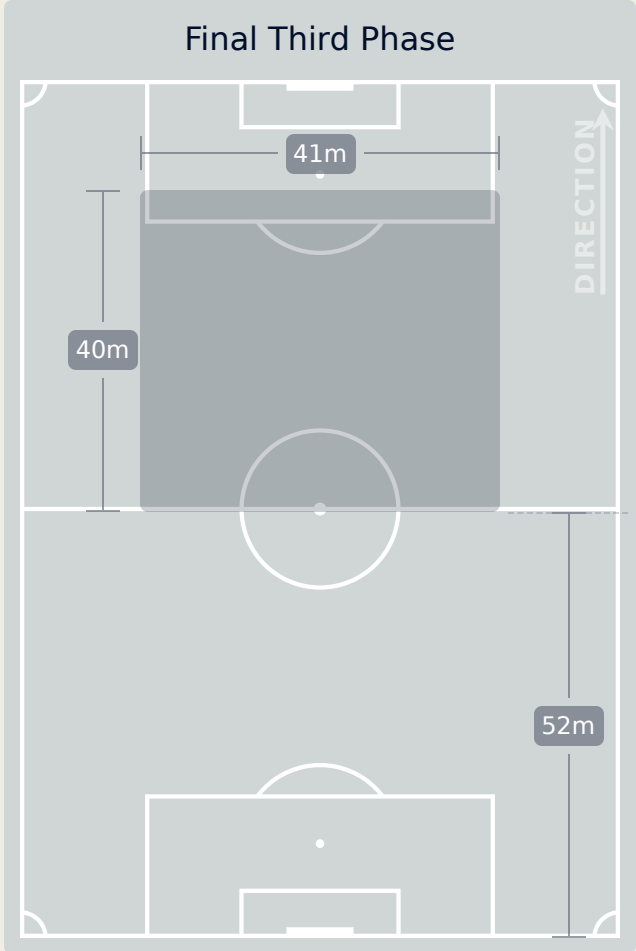
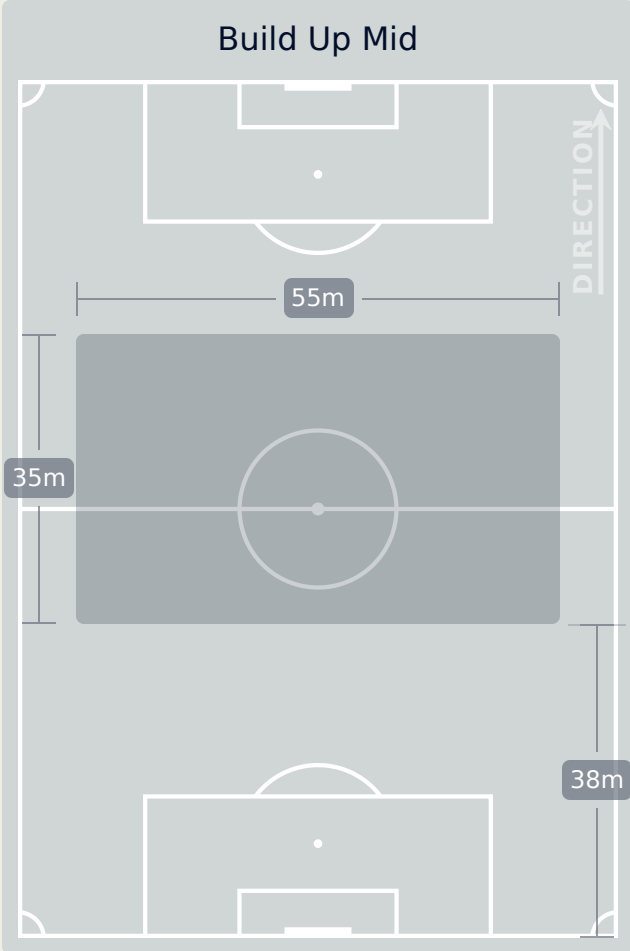
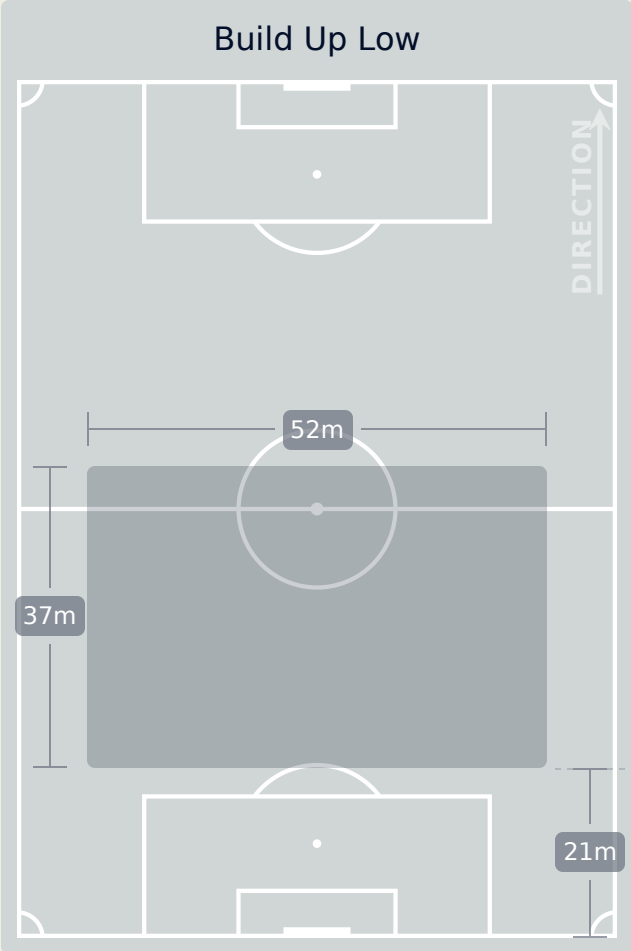
FIFA[®]
W-OFT 2024

IN POSSESSION

USA 4 - 1 Germany

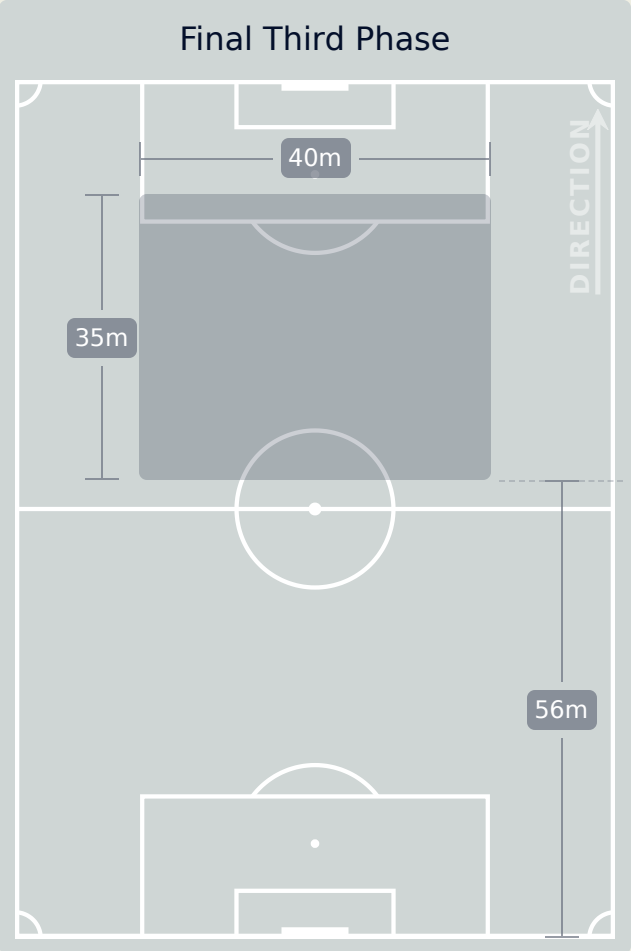
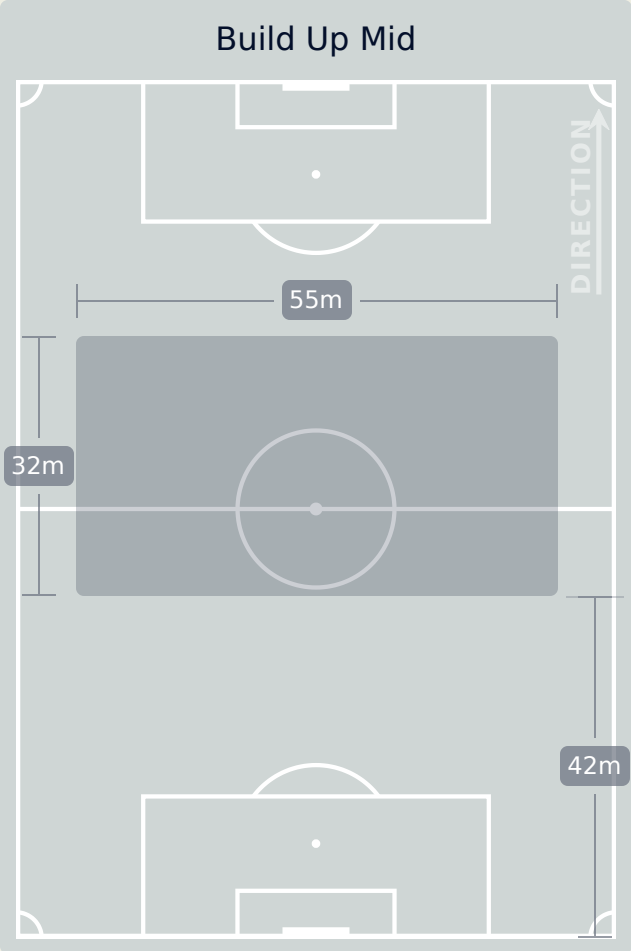
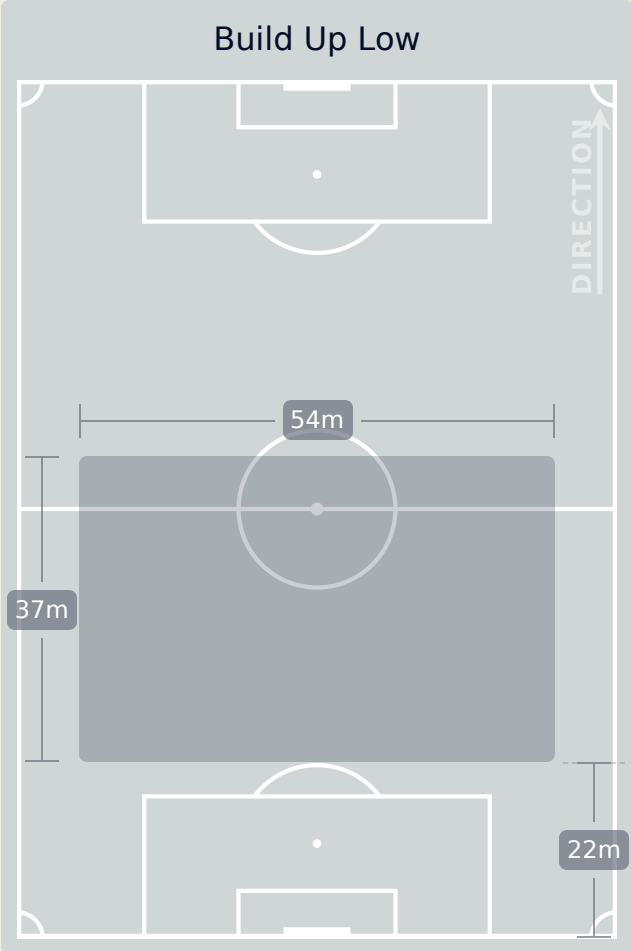
In Possession Line Height & Team Length

USA



In Possession Line Height & Team Length

Germany

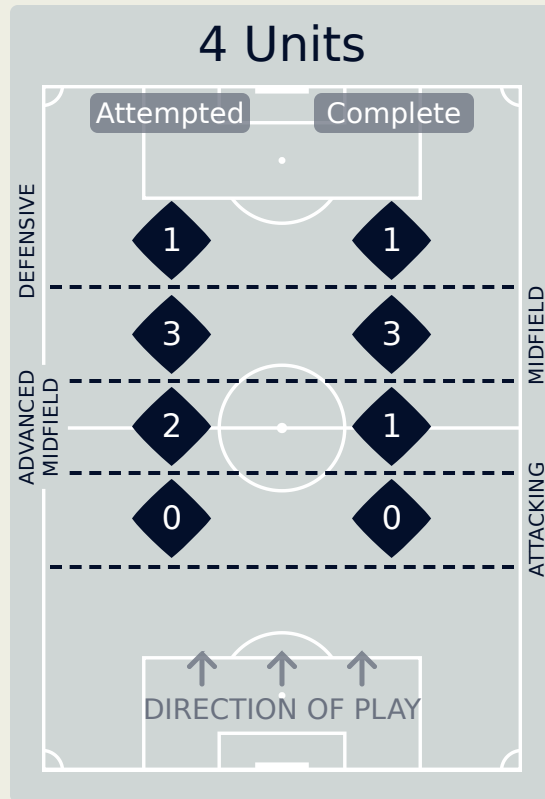
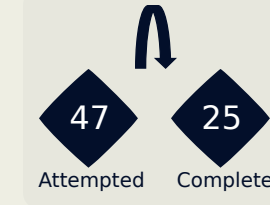
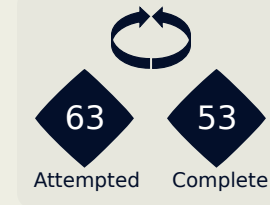
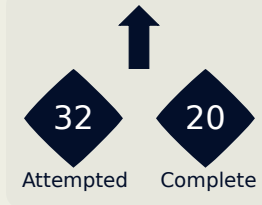


Line Breaks

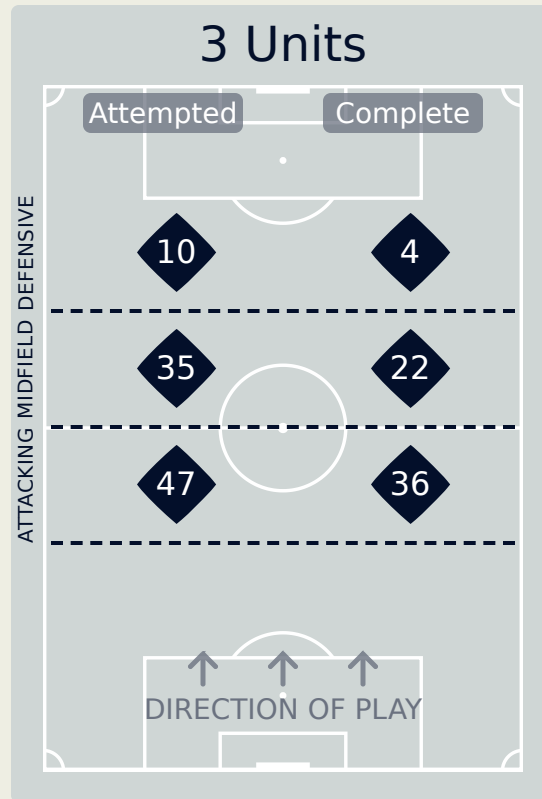
USA

Attempted Line Breaks

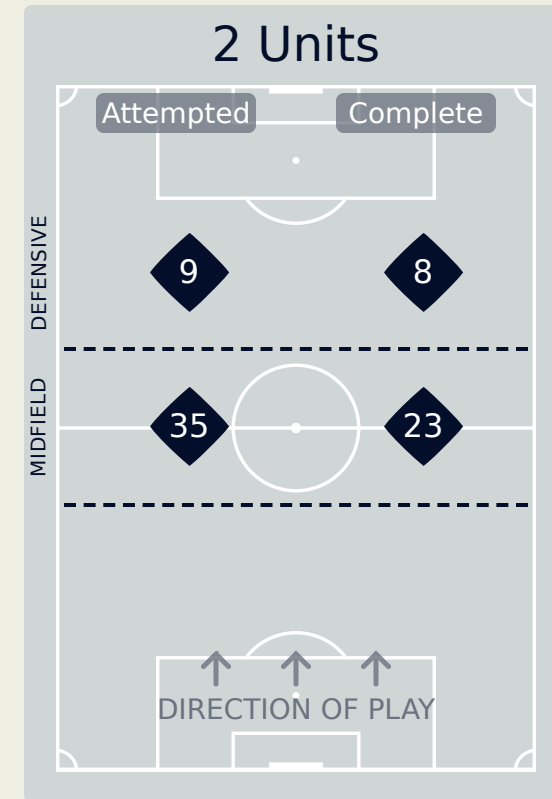
142



Attempted Line Breaks	6
Inside Shape	1
Outside Shape	5



Attempted Line Breaks	92
Inside Shape	51
Outside Shape	41



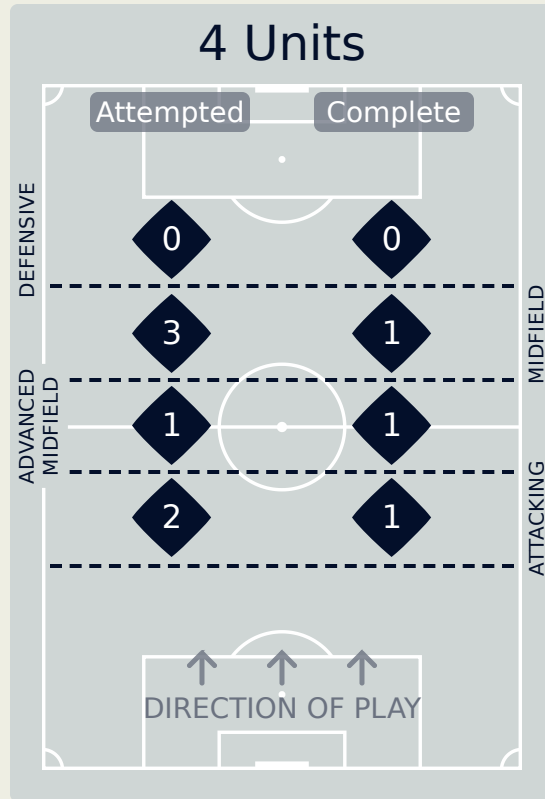
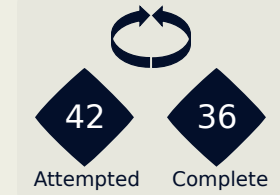
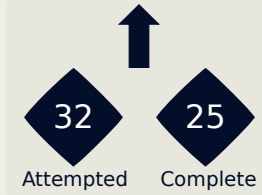
Attempted Line Breaks	44
Inside Shape	22
Outside Shape	22

Line Breaks

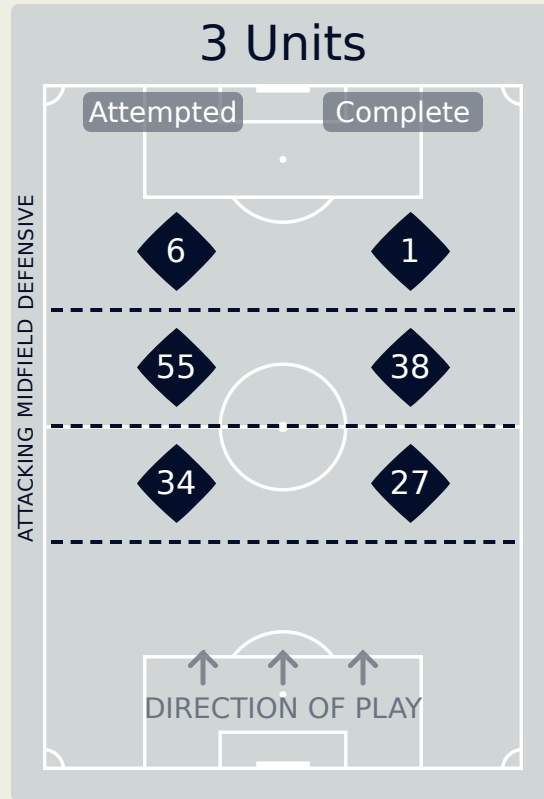
Germany

Attempted Line Breaks

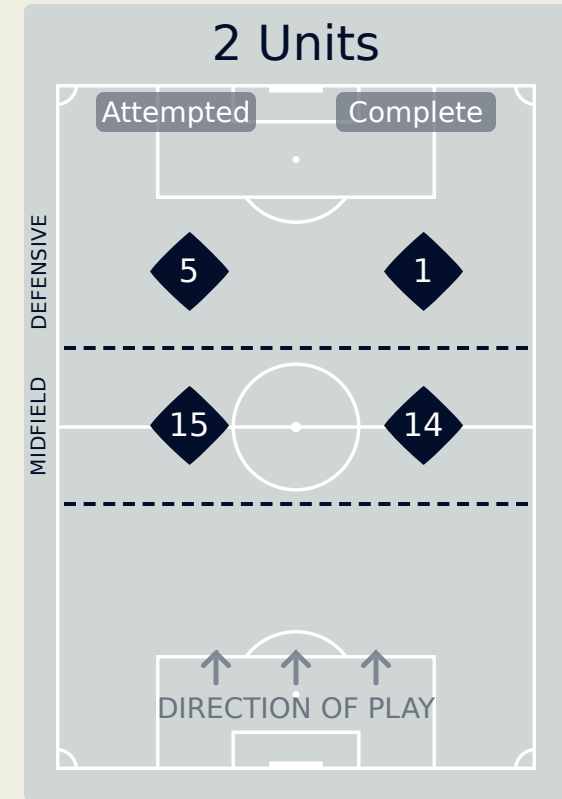
121



Attempted Line Breaks	6
Inside Shape	5
Outside Shape	1



Attempted Line Breaks	95
Inside Shape	55
Outside Shape	40



Attempted Line Breaks	20
Inside Shape	12
Outside Shape	8

Line Breaks

USA

					4 Units				3 Units			2 Units		Direction			Distribution Type		
#	Player	Line Breaks Attempted	Line Breaks Completed	Line Break Completion %	Attacking Line	Attacking Midfield Line	Midfield Line	Defensive Line	Attacking Line	Midfield Line	Defensive Line	Midfield Line	Defensive Line	Through	Around	Over	Pass	Cross	Ball Progression
1	NAEHER Alyssa	12	9	75%	0	0	0	0	8	1	0	3	0	0	1	11	12	0	0
2	FOX Emily	20	17	85%	0	1	0	0	9	2	2	6	0	2	12	6	20	0	0
4	GIRMA Naomi	7	6	86%	0	0	1	0	2	2	0	2	0	1	4	2	7	0	0
5	RODMAN Trinity	5	3	60%	0	0	0	1	1	1	0	1	1	0	4	1	4	0	1
7	DUNN Crystal	20	13	65%	0	1	0	0	7	4	2	5	1	4	5	11	20	0	0
9	SWANSON Mallory	11	7	64%	0	0	1	0	0	5	1	3	1	4	5	2	10	1	0
10	HORAN Lindsey	19	11	58%	0	0	0	0	4	7	0	6	2	9	6	4	19	0	0
11	SMITH Sophia	2	2	100%	0	0	1	0	0	1	0	0	0	1	1	0	2	0	0
12	DAVIDSON Tierna	6	3	50%	0	0	0	0	4	0	0	2	0	0	4	2	6	0	0
16	LAVELLE Rose	11	7	64%	0	0	0	0	0	4	1	3	3	4	6	1	10	1	0
17	COFFEY Samantha	14	10	71%	0	0	0	0	3	5	3	3	0	7	5	2	14	0	0
6	KRUEGER Casey	2	1	50%	0	0	0	0	1	1	0	0	0	0	1	1	2	0	0
8	WILLIAMS Lynn	0	0	0%	0	0	0	0	0	0	0	0	0	0	0	0	0	0	0
13	NIGHSWONGER Jenna	0	0	0%	0	0	0	0	0	0	0	0	0	0	0	0	0	0	0
14	SONNETT Emily	13	9	69%	0	0	0	0	8	2	1	1	1	0	9	4	9	1	3

Line Breaks

Germany

					4 Units				3 Units			2 Units		Direction			Distribution Type		
#	Player	Line Breaks Attempted	Line Breaks Completed	Line Break Completion %	Attacking Line	Attacking Midfield Line	Midfield Line	Defensive Line	Attacking Line	Midfield Line	Defensive Line	Midfield Line	Defensive Line	Through	Around	Over	Pass	Cross	Ball Progression
12	BERGER Ann-Katrin	15	8	53%	0	0	1	0	7	6	1	0	0	2	2	11	15	0	0
3	HENDRICH Kathrin	5	5	100%	0	0	0	0	2	3	0	0	0	1	3	1	5	0	0
5	HEGERING Marina	19	14	74%	1	1	0	0	11	6	0	0	0	4	10	5	19	0	0
6	MINGE Janina	14	12	86%	1	0	0	0	3	6	1	3	0	10	3	1	14	0	0
7	SCHUELLER Lea	4	0	0%	0	0	0	0	0	3	1	0	0	0	1	3	4	0	0
9	NUESKEN Sjoeke	2	2	100%	0	0	0	0	0	1	0	1	0	0	2	0	2	0	0
11	POPP Alexandra	14	9	64%	0	0	1	0	4	6	1	2	0	3	4	7	13	0	1
15	GWINN Giulia	18	16	89%	0	0	0	0	3	7	0	7	1	2	10	6	18	0	0
16	BRAND Jule	7	4	57%	0	0	0	0	0	3	1	1	2	3	3	1	7	0	0
17	BUEHL Klara	7	4	57%	0	0	0	0	0	4	0	1	2	2	1	4	5	2	0
19	RAUCH Felicitas	12	9	75%	0	0	0	0	2	10	0	0	0	2	3	7	11	1	0
8	LOHMANN Sydney	2	1	50%	0	0	0	0	1	0	1	0	0	2	0	0	2	0	0
14	SENSS Elisa	2	0	0%	0	0	1	0	1	0	0	0	0	1	0	1	2	0	0

Passing Networks

#	Passes From ↓ to →	NAEHER Alyssa	FOX Emily	GIRMA Naomi	RODMAN Trinity	DUNN Crystal	SWANSON Mallory	HORAN Lindsey	SMITH Sophia	DAVIDSON Tierna	LAVELLE Rose	COFFEY Samantha	KRUEGER Casey	WILLIAMS Lynn	NIGHSWONGER Jenna	SONNETT Emily
1	NAEHER Alyssa		3	3	4	0	0	0	0	2	0	1	0	0	0	3
2	FOX Emily	1		24	13	0	1	15	3	2	5	0	0	0	0	3
4	GIRMA Naomi	2	26		2	1	0	5	1	21	1	6	0	0	0	9
5	RODMAN Trinity	1	6	0		0	3	4	2	0	4	1	0	0	0	1
7	DUNN Crystal	1	0	2	1		4	4	3	1	0	5	0	1	0	9
9	SWANSON Mallory	0	2	2	1	4		2	4	0	5	3	0	1	0	1
10	HORAN Lindsey	0	6	8	4	3	6		0	0	7	2	0	1	1	2
11	SMITH Sophia	0	0	1	1	4	1	2		1	0	1	0	0	0	0
12	DAVIDSON Tierna	2	1	19	1	1	2	0	0		0	5	0	0	0	0
16	LAVELLE Rose	0	8	0	7	1	3	3	1	0		3	0	0	0	1
17	COFFEY Samantha	0	7	2	2	7	3	6	1	2	2		1	0	0	1
6	KRUEGER Casey	0	0	0	0	0	0	0	0	0	1	0		0	0	0
8	WILLIAMS Lynn	0	0	0	0	0	0	1	0	0	0	0	0		1	0
13	NIGHSWONGER Jenna	0	0	0	0	1	0	0	0	0	0	0	0	0		0
14	SONNETT Emily	4	0	8	0	10	1	2	0	0	1	3	0	0	0	

Top 5 Player to Player Passers		
Player	Passed To	% of Total Team Passes
GIRMA Naomi	FOX Emily	6.3%
FOX Emily	GIRMA Naomi	5.8%
GIRMA Naomi	DAVIDSON Tierna	5.1%
DAVIDSON Tierna	GIRMA Naomi	4.6%
FOX Emily	HORAN Lindsey	3.6%

Passing Networks

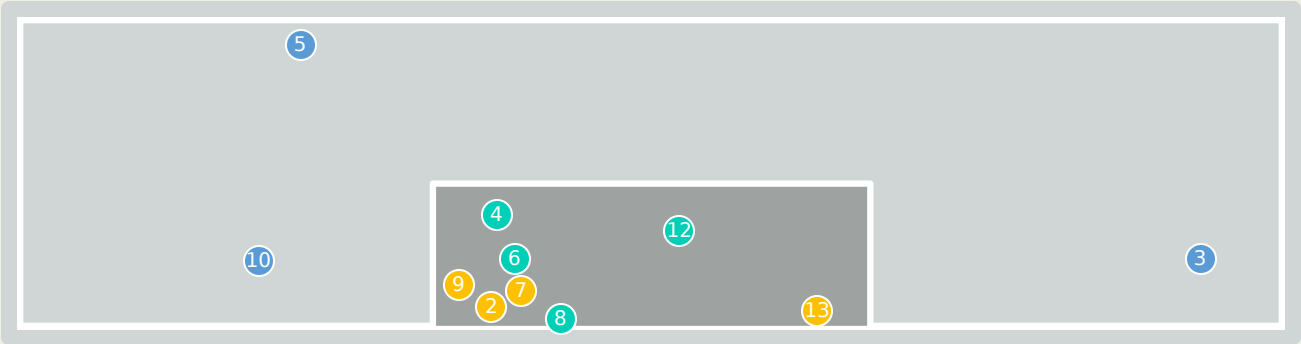
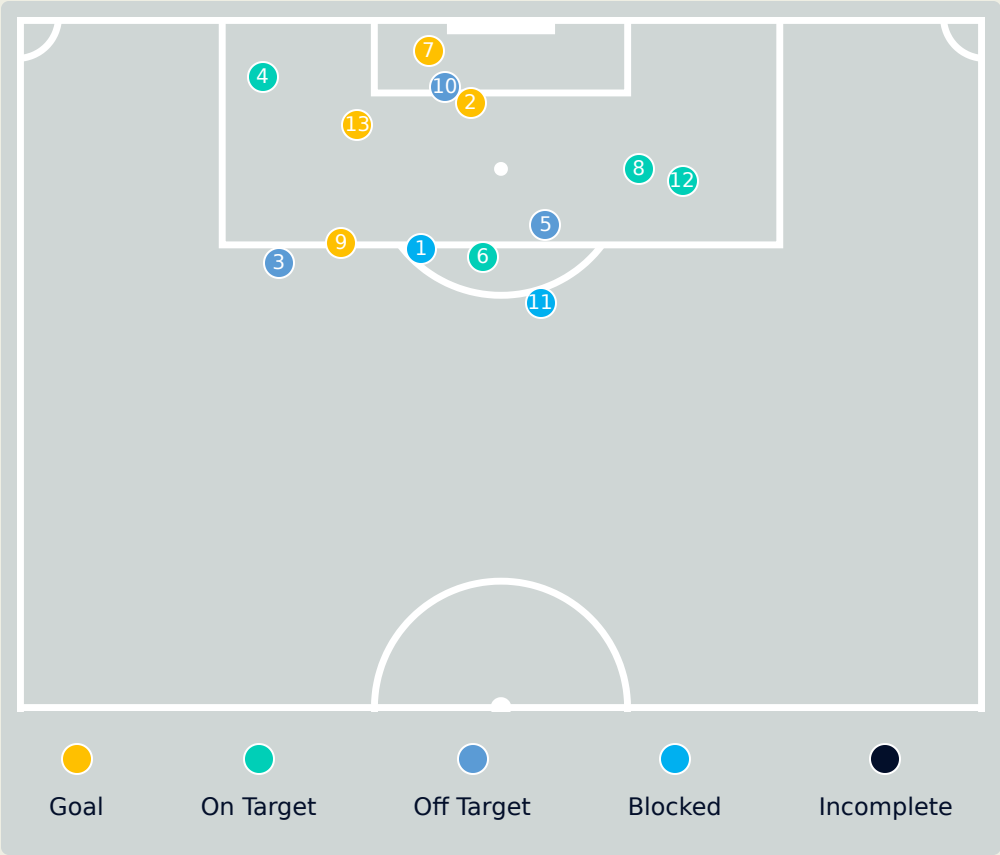
Germany

#	Passes From ↓ to →	BERGER Ann-Katrin	HENDRICH Kathrin	HEGERING Marina	MINGE Janina	SCHUELLER Lea	NUESKEN Sjoeke	POPP Alexandra	GWINN Giulia	BRAND Jule	BUEHL Klara	RAUCH Felicitas	LOHMANN Sydney	SENSS Elisa
12	BERGER Ann-Katrin		3	8	3	0	0	4	1	2	0	4	0	0
3	HENDRICH Kathrin	9		12	6	0	2	0	10	0	1	0	0	2
5	HEGERING Marina	7	17		5	0	0	5	1	1	2	18	2	0
6	MINGE Janina	0	4	10		2	1	4	3	6	5	2	2	0
7	SCHUELLER Lea	0	0	0	3		0	6	2	1	1	1	0	0
9	NUESKEN Sjoeke	0	0	0	0	2		0	5	3	3	0	0	0
11	POPP Alexandra	1	2	6	2	1	3		4	2	2	2	0	0
15	GWINN Giulia	2	5	0	4	2	1	1		4	4	0	1	3
16	BRAND Jule	0	0	0	1	2	1	1	2		2	1	0	0
17	BUEHL Klara	0	0	1	4	3	1	0	1	2		4	2	2
19	RAUCH Felicitas	1	1	13	1	3	0	5	0	0	7		1	0
8	LOHMANN Sydney	0	0	1	1	0	0	1	1	0	3	1		0
14	SENSS Elisa	0	0	0	2	0	0	0	4	0	0	0	1	

Top 5 Player to Player Passers		
Player	Passed To	% of Total Team Passes
HEGERING Marina	RAUCH Felicitas	5.6%
HEGERING Marina	HENDRICH Kathrin	5.3%
RAUCH Felicitas	HEGERING Marina	4.1%
HENDRICH Kathrin	HEGERING Marina	3.8%
HENDRICH Kathrin	GWINN Giulia	3.1%

Attempts at Goal

USA



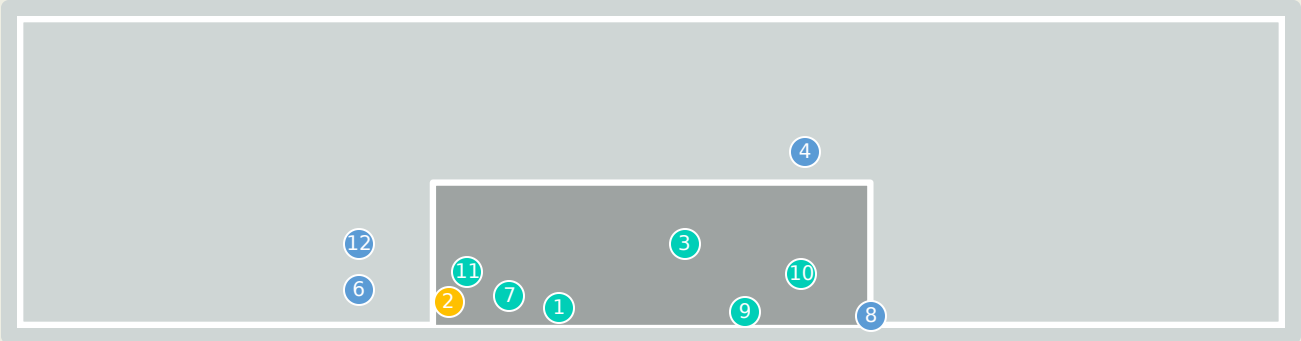
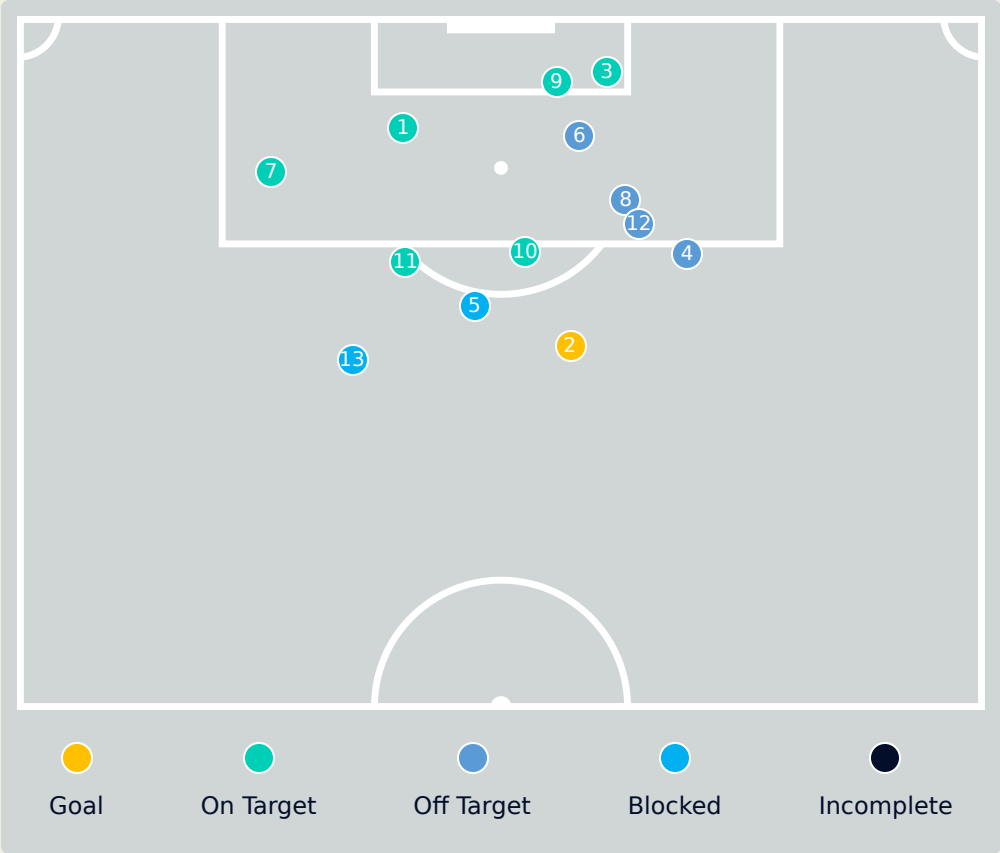
Key	Outcome	Shots
●	Goals	4
●	On Target	4
●	Off Target	3
●	Blocked	2
●	Incomplete	0

Attempts at Goal

Time	Player	Outcome	Body Part	Delivery Type
9	7 DUNN Crystal	Incomplete - Blocked	Right Foot	Cross
9	11 SMITH Sophia	On Target - Goal	Left Foot	Cross
15	11 SMITH Sophia	Off Target	Right Foot	Pass
15	9 SWANSON Mallory	On Target - Saved	Right Foot	Pass
24	16 LAVELLE Rose	Off Target	Left Foot	Pass
25	11 SMITH Sophia	On Target - Saved	Left Foot	Loose Ball
25	9 SWANSON Mallory	On Target - Goal	Right Foot	Other
29	11 SMITH Sophia	On Target - Saved	Right Foot	Pass
43	11 SMITH Sophia	Deflected On Target - Goal	Right Foot	Loose Ball
58	9 SWANSON Mallory	Off Target	Left Foot	Cross
66	5 RODMAN Trinity	Incomplete - Blocked	Right Foot	Pass
83	5 RODMAN Trinity	On Target - Saved	Left Foot	Pass
88	8 WILLIAMS Lynn	On Target - Goal	Left Foot	Pass

Attempts at Goal

Germany



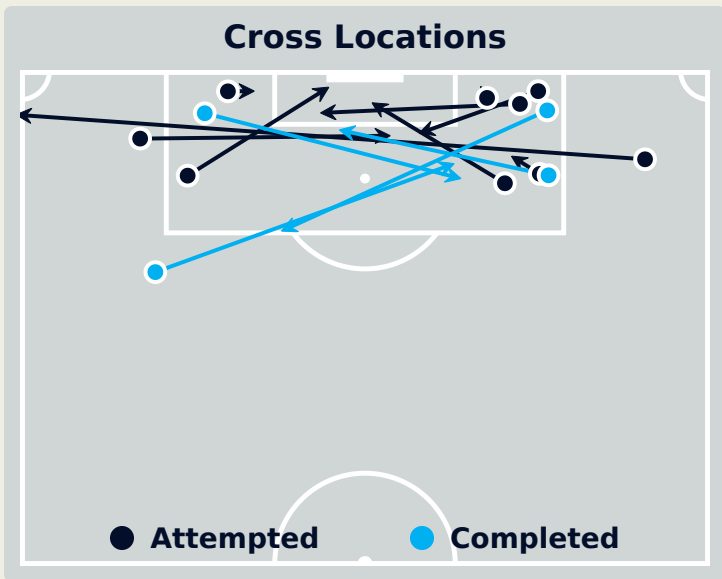
Key	Outcome	Shots
●	Goals	1
●	On Target	6
●	Off Target	4
●	Blocked	2
●	Incomplete	0

Attempts at Goal

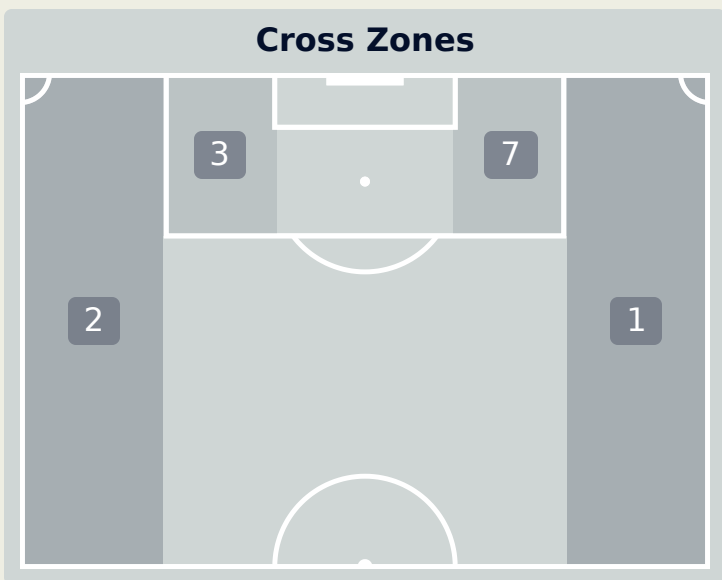
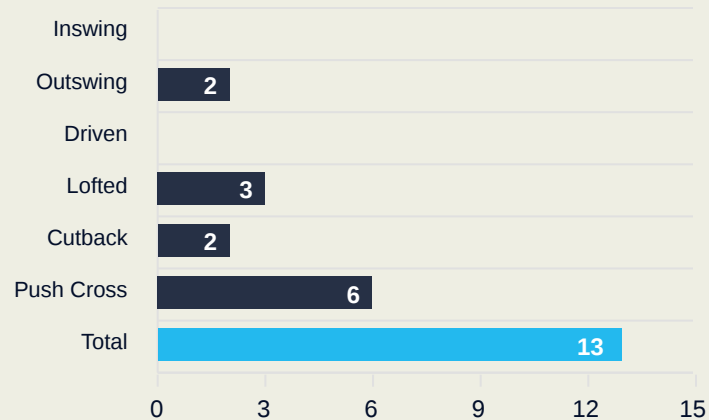
Germany

Time	Player	Outcome	Body Part	Delivery Type
3	7 SCHUELLER Lea	On Target - Saved	Right Foot	Pass
21	15 GWINN Giulia	On Target - Goal	Right Foot	Pass
30	7 SCHUELLER Lea	On Target - Saved	Head	Pass
31	15 GWINN Giulia	Off Target	Right Foot	Pass
33	6 MINGE Janina	Incomplete - Blocked	Left Foot	Loose Ball
50	9 NUESKEN Sjoeke	Off Target	Head	Cross
56	17 BUEHL Klara	On Target - Saved	Right Foot	Pass
57	16 BRAND Jule	Off Target	Left Foot	Loose Ball
61	9 NUESKEN Sjoeke	On Target - Saved	Right Foot	Cross
66	15 GWINN Giulia	On Target - Saved	Right Foot	Pass
90	8 LOHMANN Sydney	On Target - Saved	Left Foot	Pass
90	16 BRAND Jule	Deflected Off Target - Saved	Left Foot	Pass
93	15 GWINN Giulia	Incomplete - Blocked	Right Foot	Freekick

Crosses (Open Play)



Delivery Type



Attempted

13

Completed

5

Most Crosses Attempted

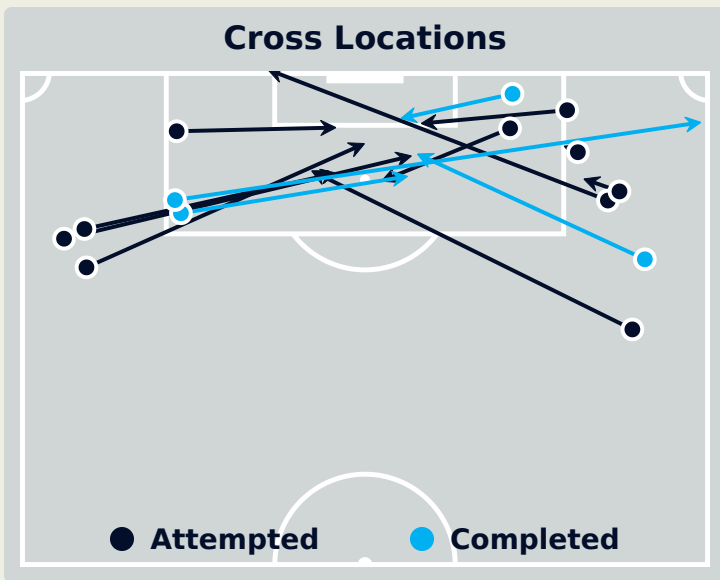
5

RODMAN Trinity
ATTACKING MIDFIELD RIGHT

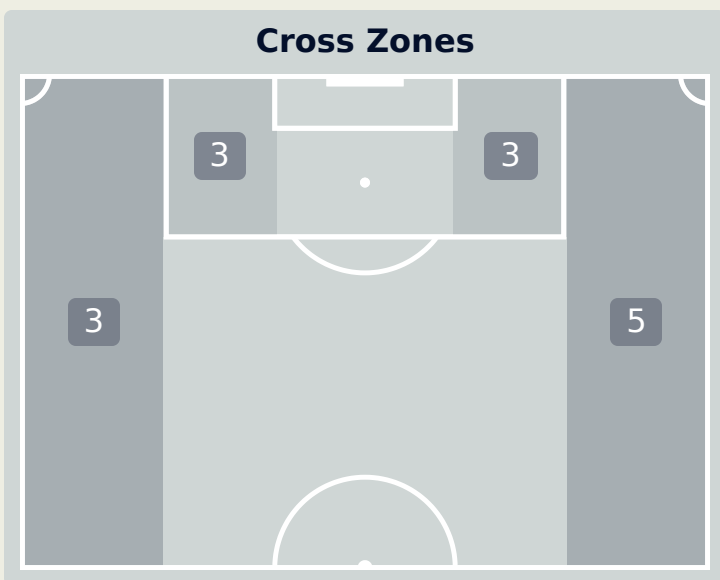
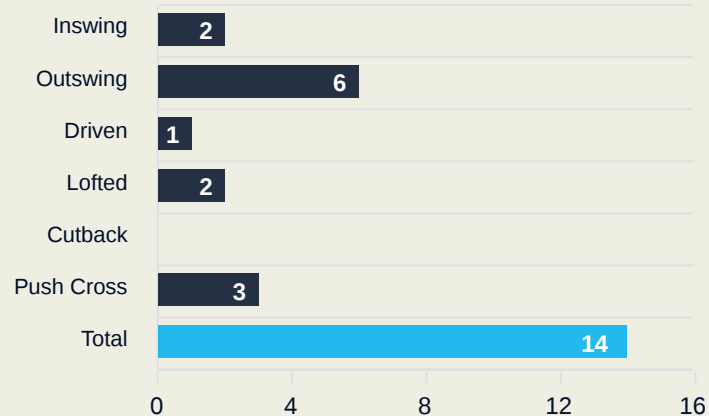
#	Player	Inswing	Outswing	Driven	Lofted	Cutback	Push Cross	Total Attempted
1	NAEHER Alyssa	0	0	0	0	0	0	0
2	FOX Emily	0	0	0	0	0	0	0
4	GIRMA Naomi	0	0	0	0	0	0	0
5	RODMAN Trinity	0	1	0	0	2	2	5
7	DUNN Crystal	0	0	0	1	0	0	1
9	SWANSON Mallory	0	0	0	0	0	1	1
10	HORAN Lindsey	0	0	0	0	0	0	0
11	SMITH Sophia	0	1	0	0	0	3	4
12	DAVIDSON Tierna	0	0	0	0	0	0	0
16	LAVELLE Rose	0	0	0	1	0	0	1
17	COFFEY Samantha	0	0	0	0	0	0	0
6	KRUEGER Casey	0	0	0	0	0	0	0
8	WILLIAMS Lynn	0	0	0	0	0	0	0
13	NIGHSWONGER Jenna	0	0	0	0	0	0	0
14	SONNETT Emily	0	0	0	1	0	0	1

Germany

Crosses (Open Play)



Delivery Type



Attempted

14

Completed

4

Most Crosses Attempted

8

BUEHL Klara
LEFT MIDFIELD

#	Player	Inswing	Outswing	Driven	Lofted	Cutback	Push Cross	Total Attempted
12	BERGER Ann-Katrin	0	0	0	0	0	0	0
3	HENDRICH Kathrin	0	0	0	0	0	0	0
5	HEGERING Marina	0	0	0	0	0	0	0
6	MINGE Janina	0	0	0	0	0	0	0
7	SCHUELLER Lea	0	1	0	0	0	0	1
9	NUESKEN Sjoeke	0	0	0	0	0	0	0
11	POPP Alexandra	0	0	0	1	0	0	1
15	GWINN Giulia	0	1	0	0	0	0	1
16	BRAND Jule	0	0	1	1	0	0	2
17	BUEHL Klara	2	3	0	0	0	3	8
19	RAUCH Felicitas	0	1	0	0	0	0	1
8	LOHMANN Sydney	0	0	0	0	0	0	0
14	SENSS Elisa	0	0	0	0	0	0	0

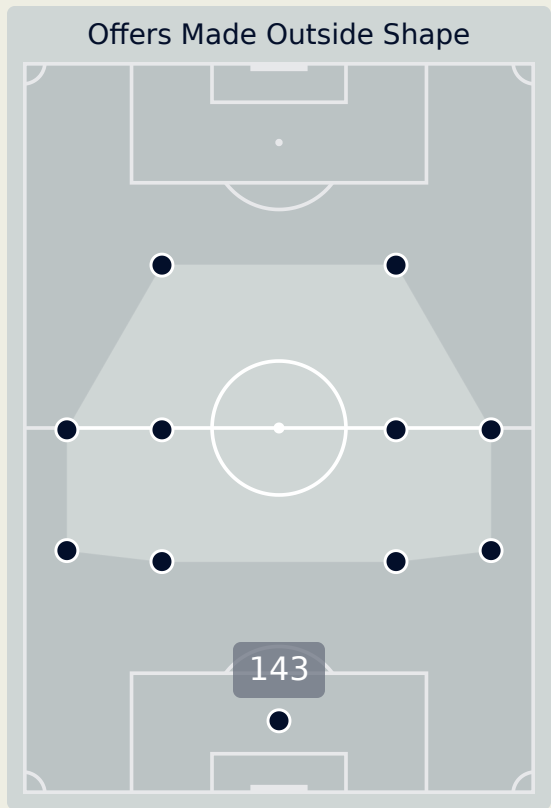
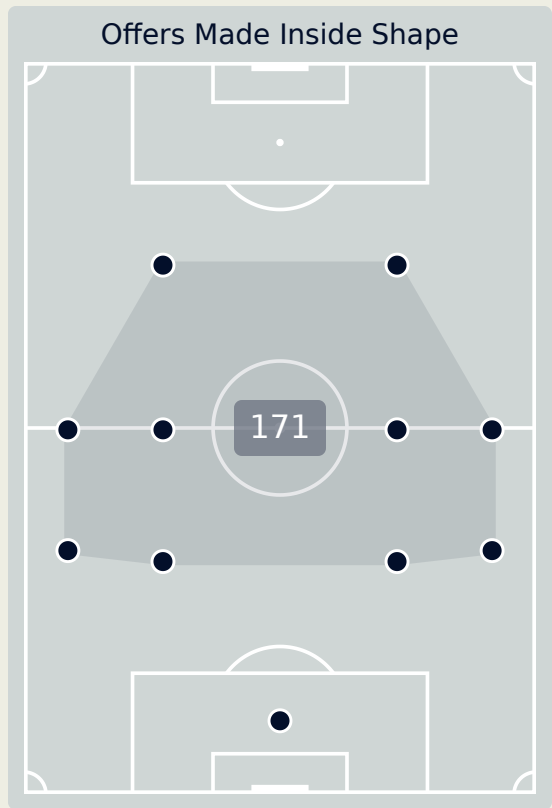
Offering to Receive

314
Total Offers Made

125
Total Offers Received

Most Offers
47
HORAN Lindsey
DEFENSIVE MIDFIELD CENTRE RIGHT

114
Offers Made in Final Third



152
Offers Made in Middle Third

48
Offers Made in Defensive Third

#	Player	Offers Made	Offers Received	% Made & Received
1	NAEHER Alyssa	2	1	50%
2	FOX Emily	11	2	18.2%
4	GIRMA Naomi	43	24	55.8%
5	RODMAN Trinity	22	8	36.4%
7	DUNN Crystal	24	12	50%
9	SWANSON Mallory	44	13	29.5%
10	HORAN Lindsey	47	26	55.3%
11	SMITH Sophia	39	10	25.6%
12	DAVIDSON Tierna	0	0	0%
16	LAVELLE Rose	29	8	27.6%
17	COFFEY Samantha	31	12	38.7%
6	KRUEGER Casey	0	0	0%
8	WILLIAMS Lynn	8	1	12.5%
13	NIGHSWONGER Jenna	5	1	20%
14	SONNETT Emily	9	7	77.8%

Germany

Offering to Receive

273

Total Offers Made

96

Total Offers Received

Most Offers

49

BRAND Jule
RIGHT MIDFIELD

122

Offers Made in Final Third

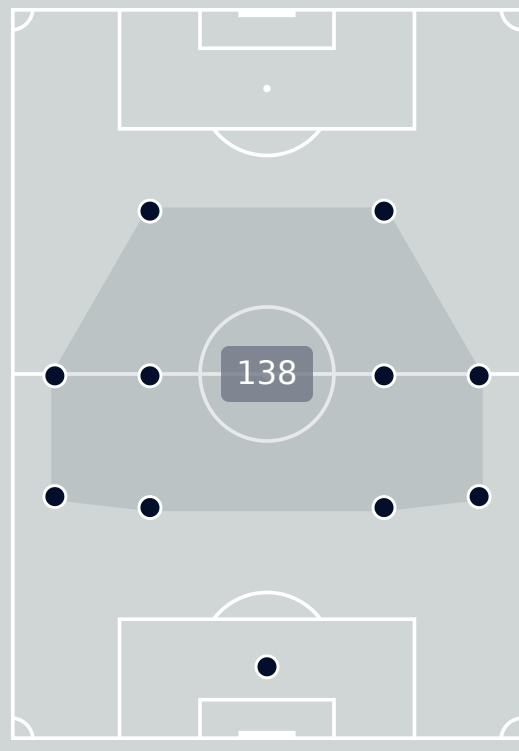
121

Offers Made in Middle Third

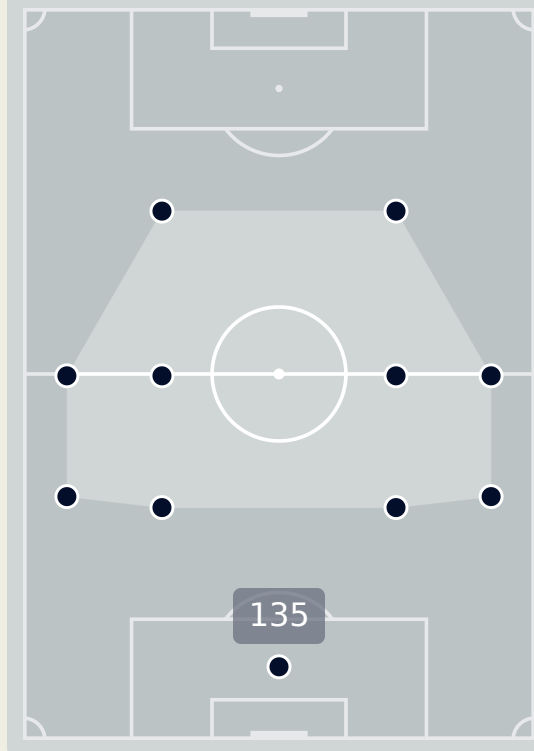
30

Offers Made in Defensive Third

Offers Made Inside Shape



Offers Made Outside Shape

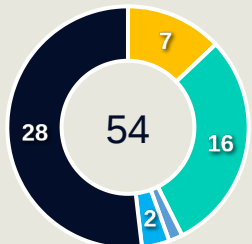


#	Player	Offers Made	Offers Received	% Made & Received
12	BERGER Ann-Katrin	15	10	66.7%
3	HENDRICH Kathrin	3	3	100%
5	HEGERING Marina	0	0	0%
6	MINGE Janina	10	7	70%
7	SCHUELLER Lea	20	4	20%
9	NUESKEN Sjoeke	24	6	25%
11	POPP Alexandra	27	11	40.7%
15	GWINN Giulia	43	18	41.9%
16	BRAND Jule	49	10	20.4%
17	BUEHL Klara	33	13	39.4%
19	RAUCH Felicitas	6	1	16.7%
8	LOHMANN Sydney	24	6	25%
14	SENSS Elisa	19	7	36.8%

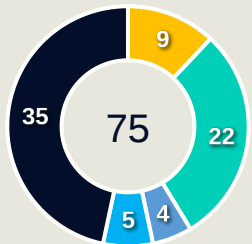
Movement to Receive

Movement Types by Phase

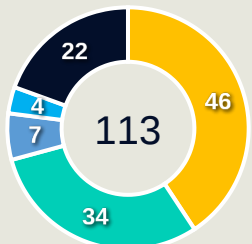
Final Third Phase



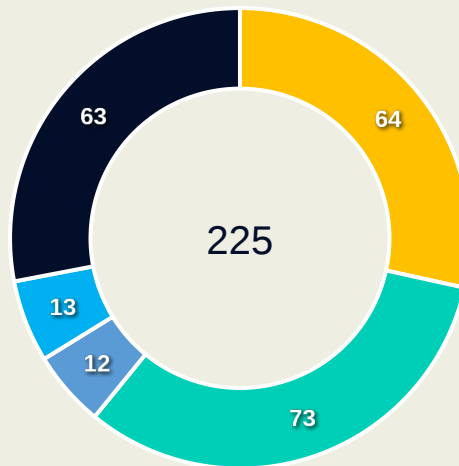
Progression Phase



Build Up Phase



All Movement Types

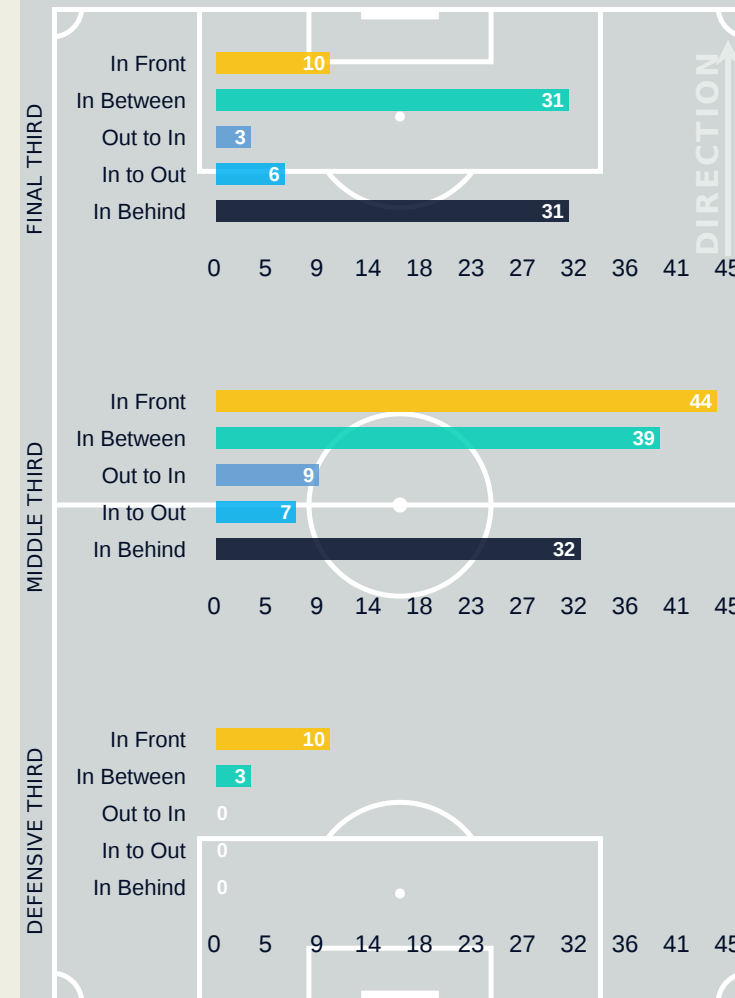


- In Front
- In Between
- Out to In
- In to Out
- In Behind

Top Ranked Players

Type	Player	Movements
In Front	17 COFFEY Samantha	22
In Between	10 HORAN Lindsey	21
Out to In	9 SWANSON Mallory	4
In to Out	11 SMITH Sophia	4
In Behind	11 SMITH Sophia	17

Movement Types Pitch Third

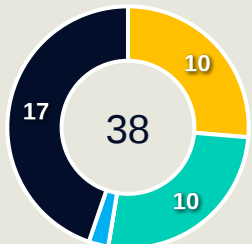


Germany

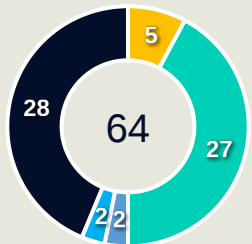
Movement to Receive

Movement Types by Phase

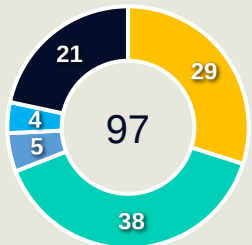
Final Third Phase



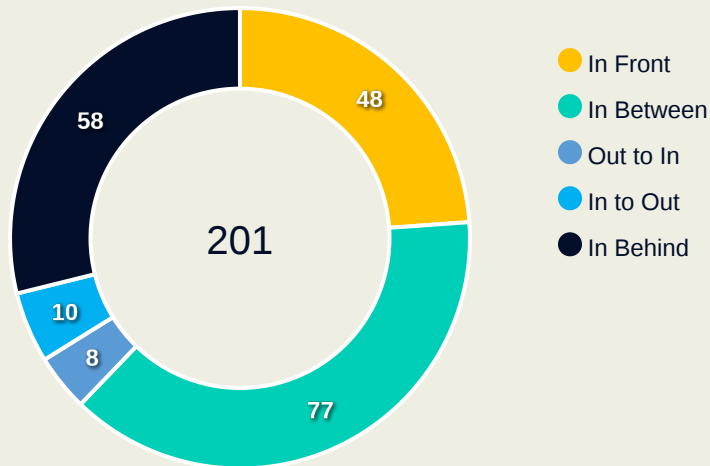
Progression Phase



Build Up Phase



All Movement Types

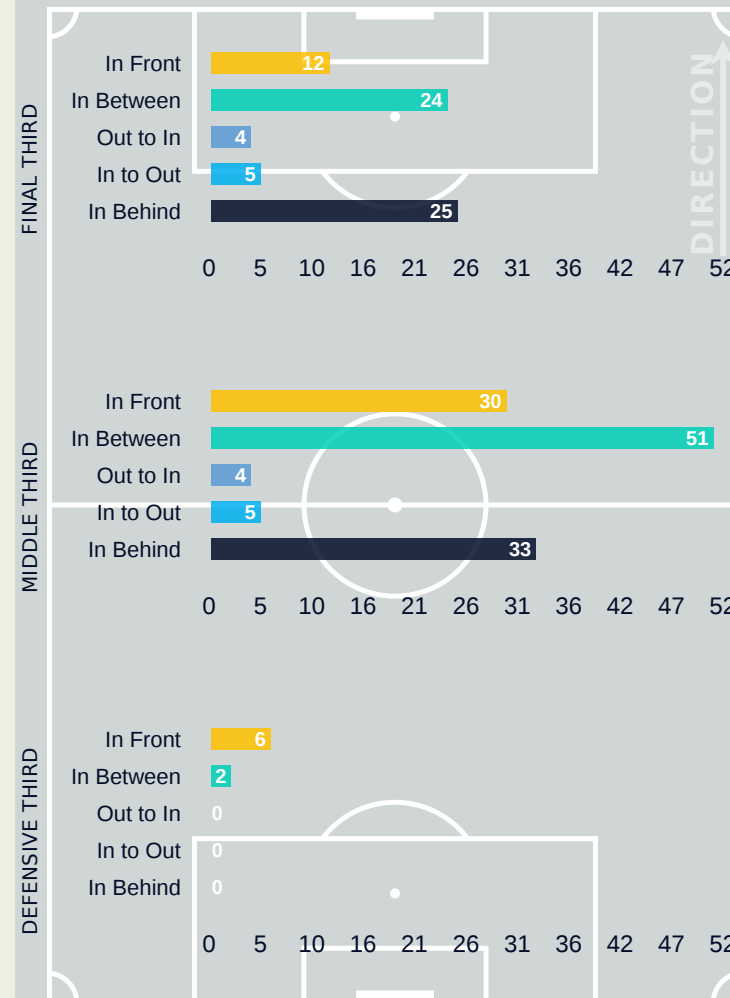


- In Front
- In Between
- Out to In
- In to Out
- In Behind

Top Ranked Players

Type	Player	Movements
In Front	11 POPP Alexandra	16
In Between	8 LOHMANN Sydney	18
Out to In	16 BRAND Jule	4
In to Out	17 BUEHL Klara	4
In Behind	7 SCHUELLER Lea	15

Movement Types Pitch Third



FIFA[®]
W-OFT 2024

OUT OF POSSESSION

USA 4 - **1 Germany**

Defensive Actions

45

Forced Turnovers

43

Possession Regained

3

Interceptions

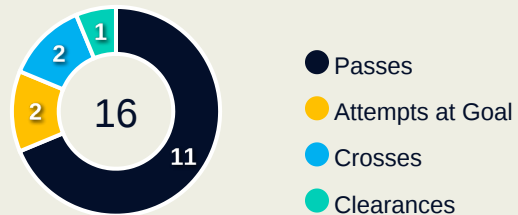
20

Tackles

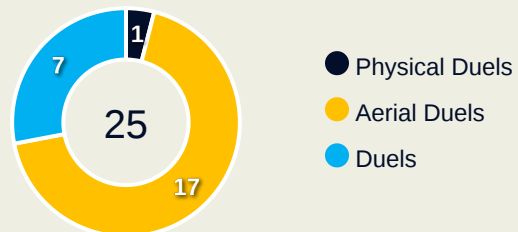
6.59

Possession Actions / Defensive Action

Blocks



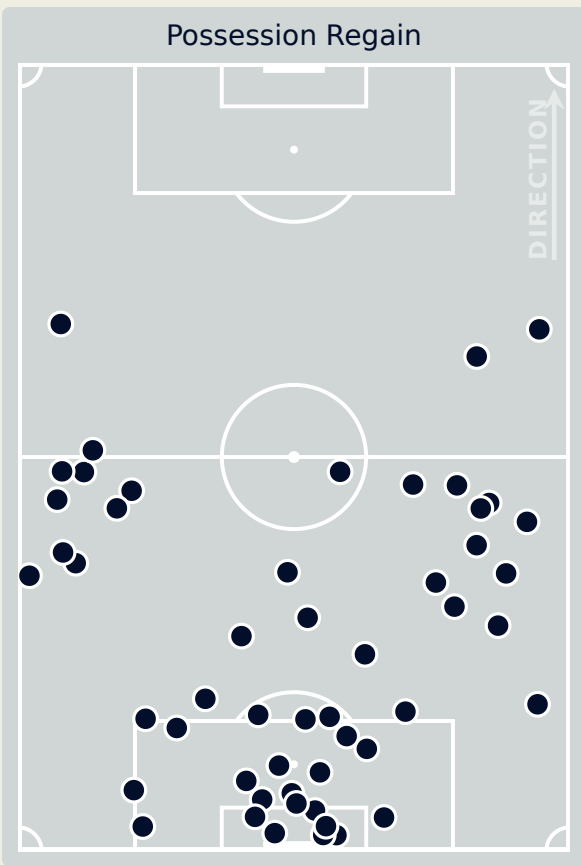
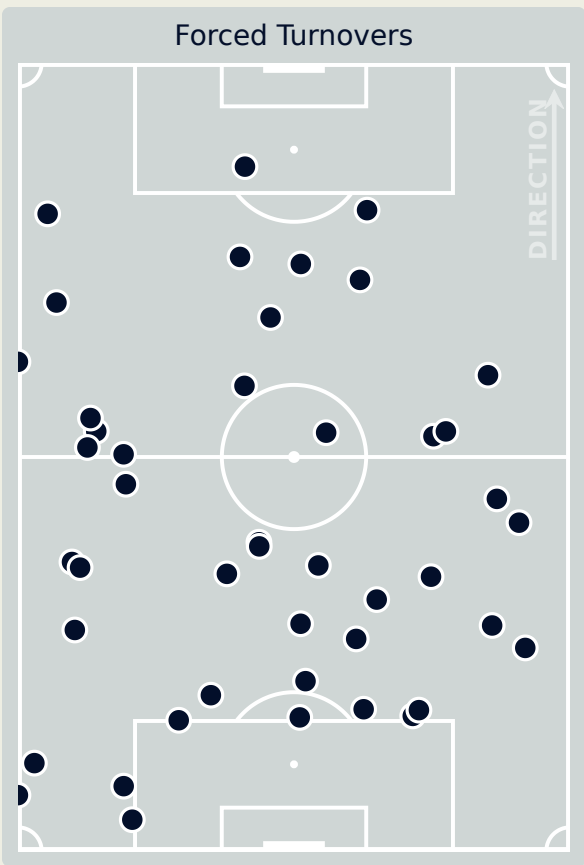
Possession Contests



Most Possession Regains

7

NAEHER Alyssa
GOALKEEPER



#	Player	Total Possession Regains
1	NAEHER Alyssa	7
2	FOX Emily	6
4	GIRMA Naomi	4
5	RODMAN Trinity	3
7	DUNN Crystal	6
9	SWANSON Mallory	3
10	HORAN Lindsey	2
11	SMITH Sophia	0
12	DAVIDSON Tierna	3
16	LAVELLE Rose	4
17	COFFEY Samantha	2
6	KRUEGER Casey	0
8	WILLIAMS Lynn	0
13	NIGHSWONGER Jenna	0
14	SONNETT Emily	3

Germany

Defensive Actions

38

Forced Turnovers

37

Possession Regained

6

Interceptions

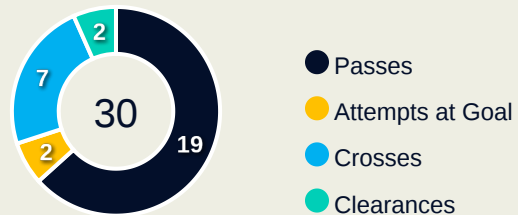
23

Tackles

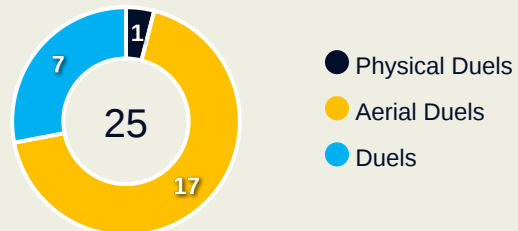
3.72

Possession Actions / Defensive Action

Blocks



Possession Contests

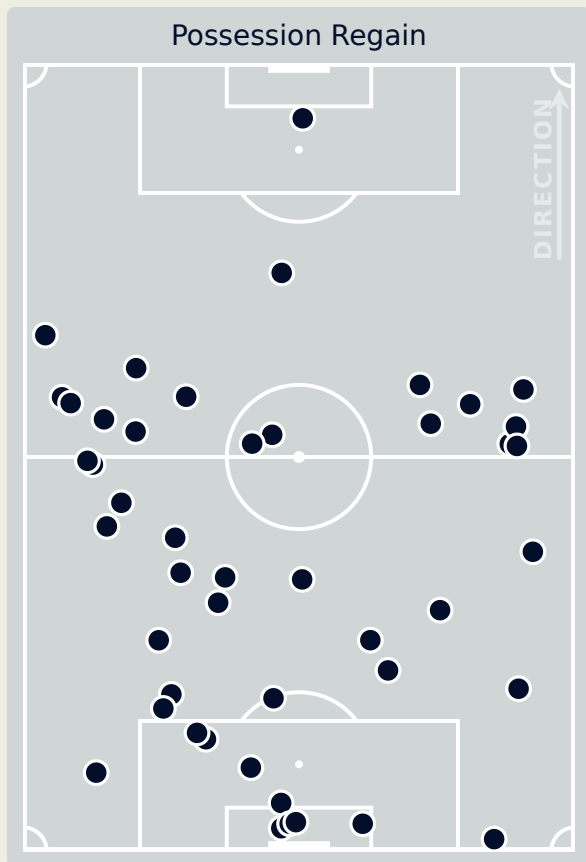
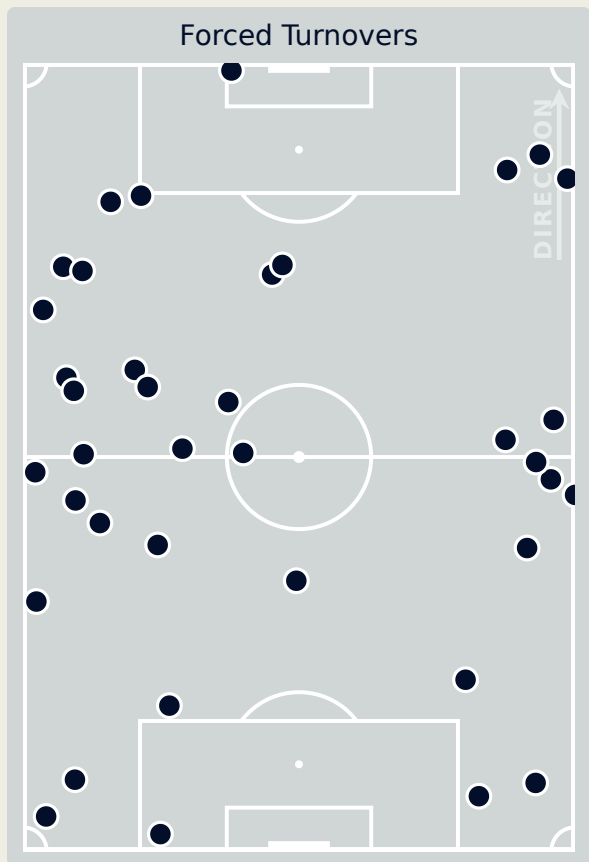


Most Possession Regains

7

HEGERING Marina

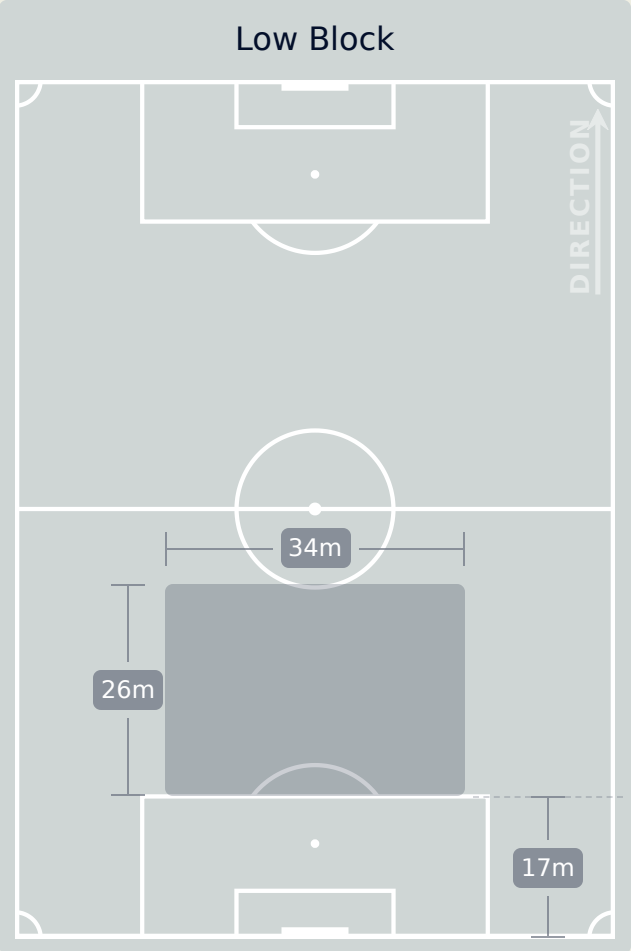
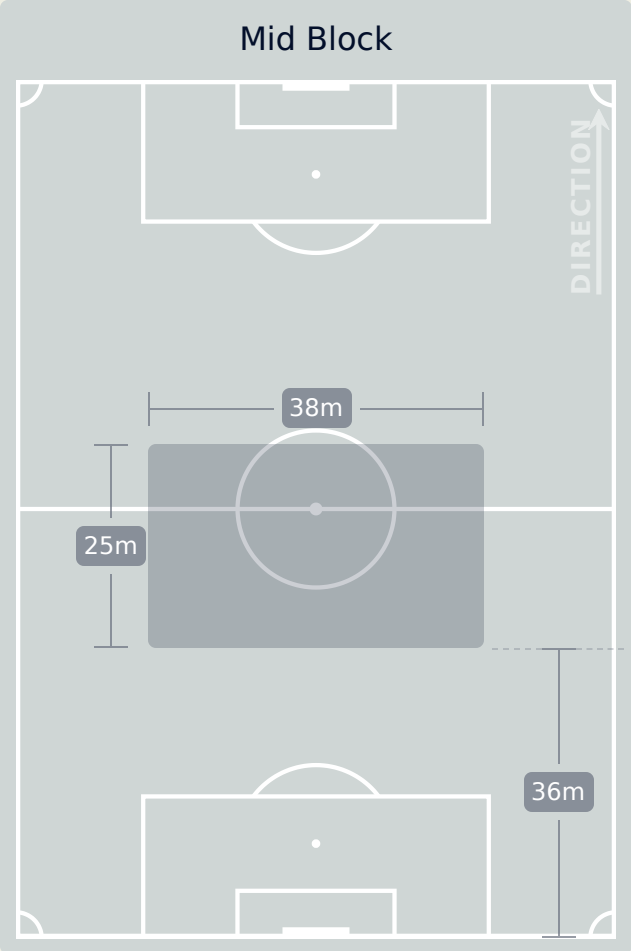
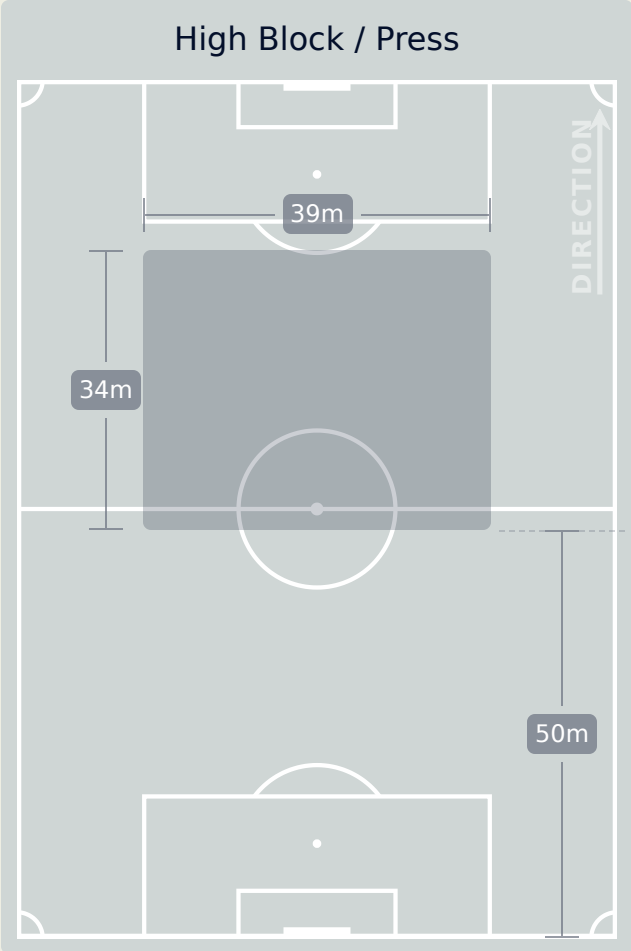
LEFT CENTRE BACK



#	Player	Total Possession Regains
12	BERGER Ann-Katrin	5
3	HENDRICH Kathrin	5
5	HEGERING Marina	7
6	MINGE Janina	1
7	SCHUELLER Lea	1
9	NUESKEN Sjoeke	1
11	POPP Alexandra	2
15	GWINN Giulia	3
16	BRAND Jule	2
17	BUEHL Klara	3
19	RAUCH Felicitas	6
8	LOHMANN Sydney	0
14	SENSS Elisa	1

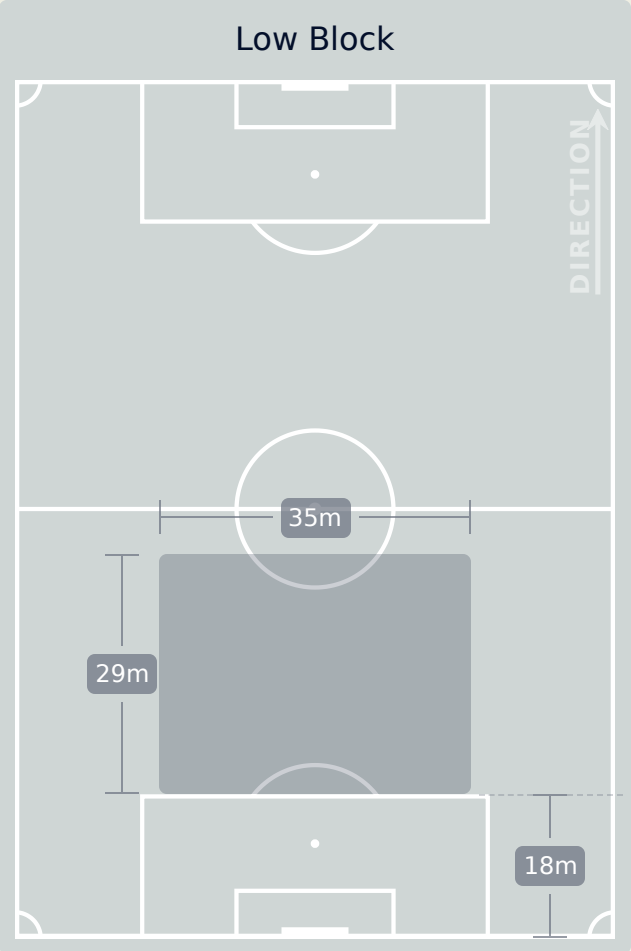
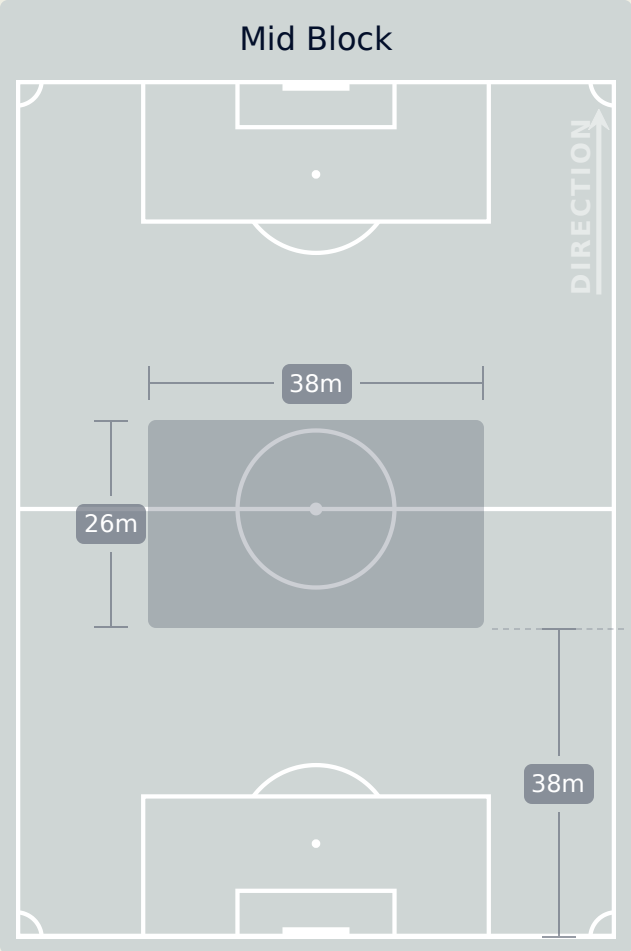
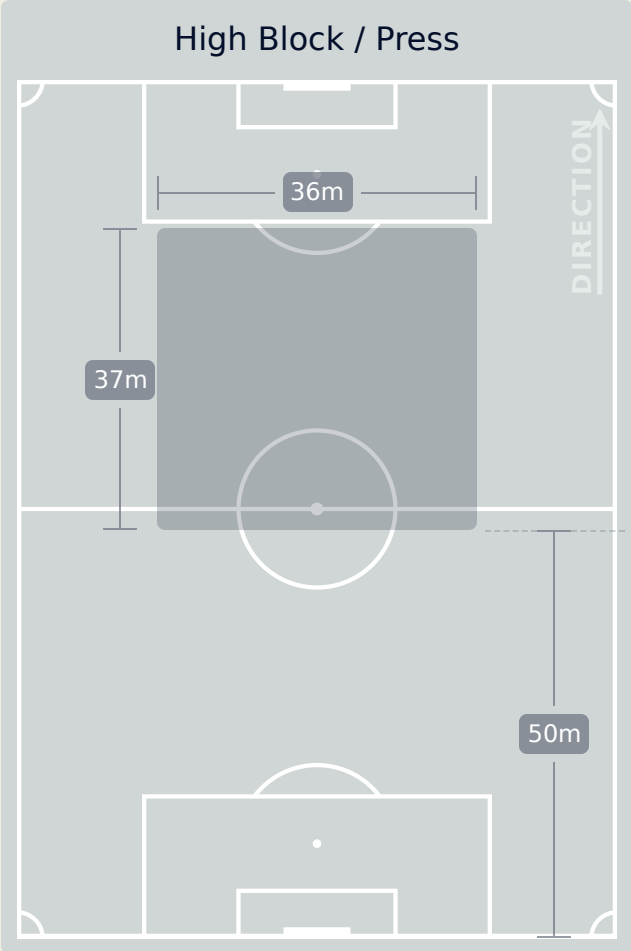
Defensive Line Height & Team Length

USA



Defensive Line Height & Team Length

Germany



Defensive Pressure

USA



Germany



157	Total Pressures	189
37	Direct Pressures	43
1.47s	Avg Pressure Duration	1.96s
45	Forced Turnovers	38
9.19s	Ball Recovery Time	7.76s
44	Pushing on into Pressing	50
95	Pushing on	135
28	Pressing Direction Inside	20
90	Pressing Direction Outside	128

Most Direct Pressures

7

FOX Emily
RIGHT BACK

Most Direct Pressures

9

BRAND Jule
RIGHT MIDFIELD

FIFA[®]
W-OFT 2024

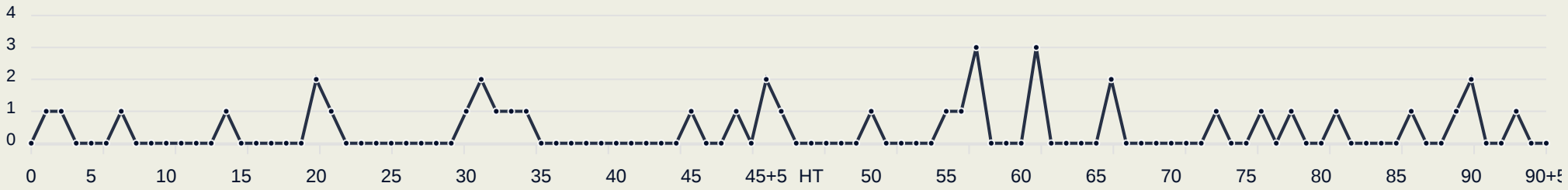
GOALKEEPING

USA 4 - **1 Germany**

Goalkeeping Involvement

USA

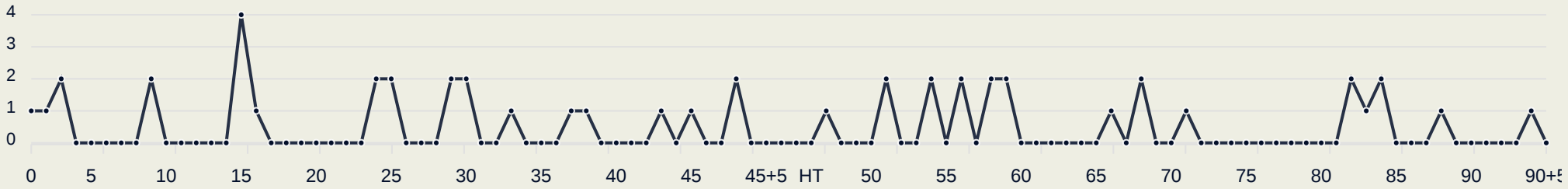
USA GK Involvement Timeline



40
Total Involvements

Germany

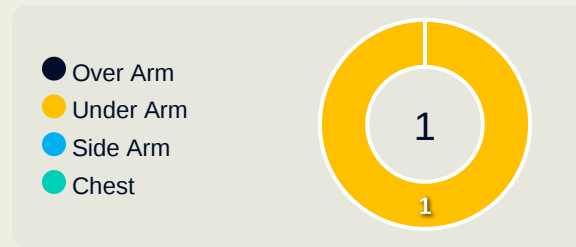
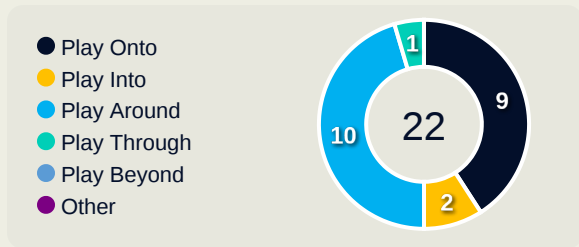
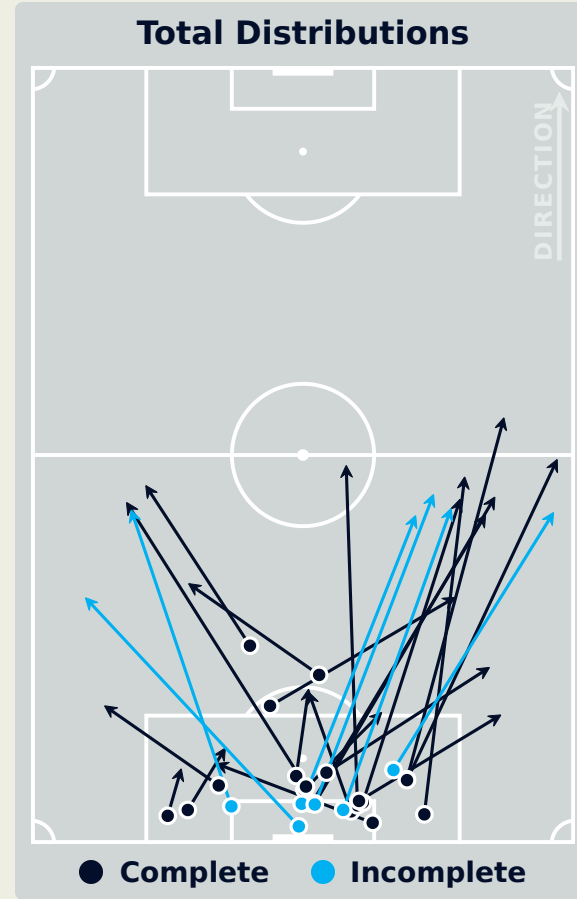
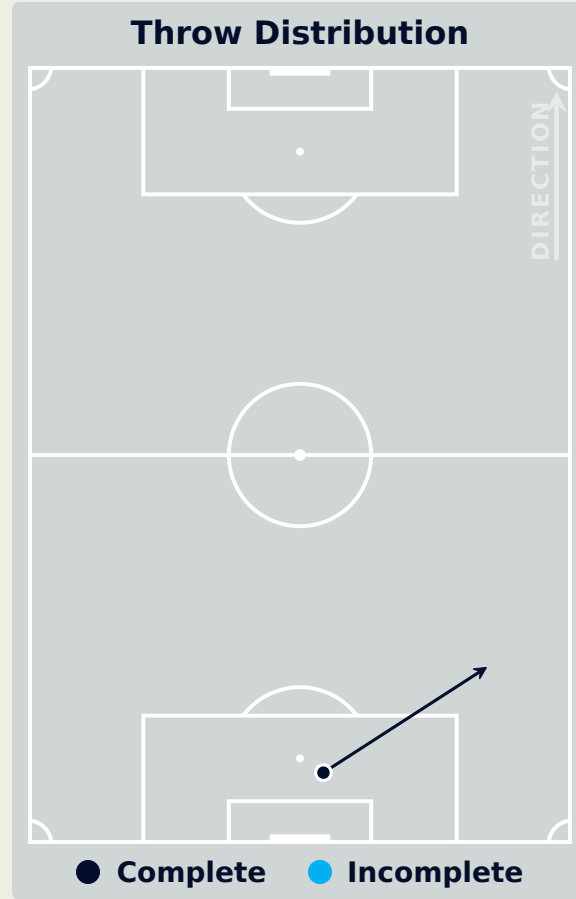
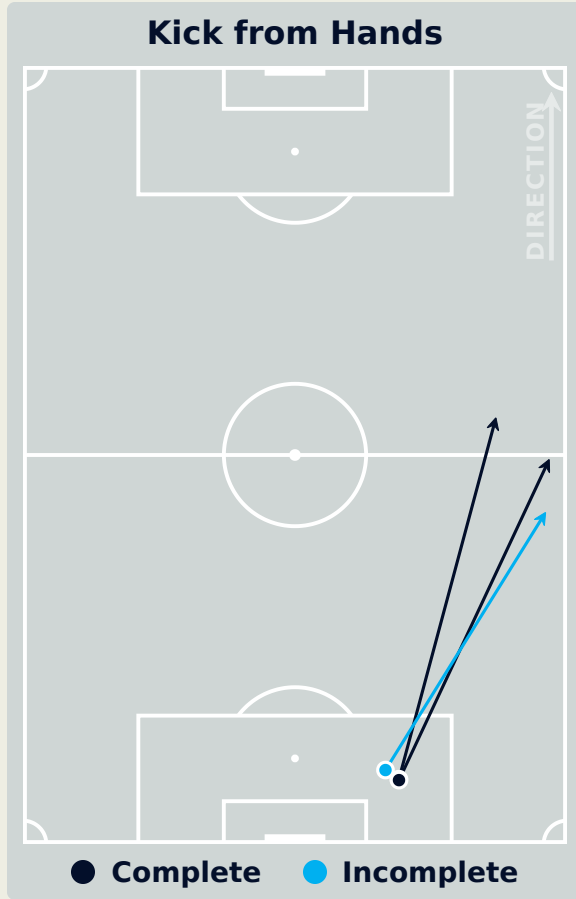
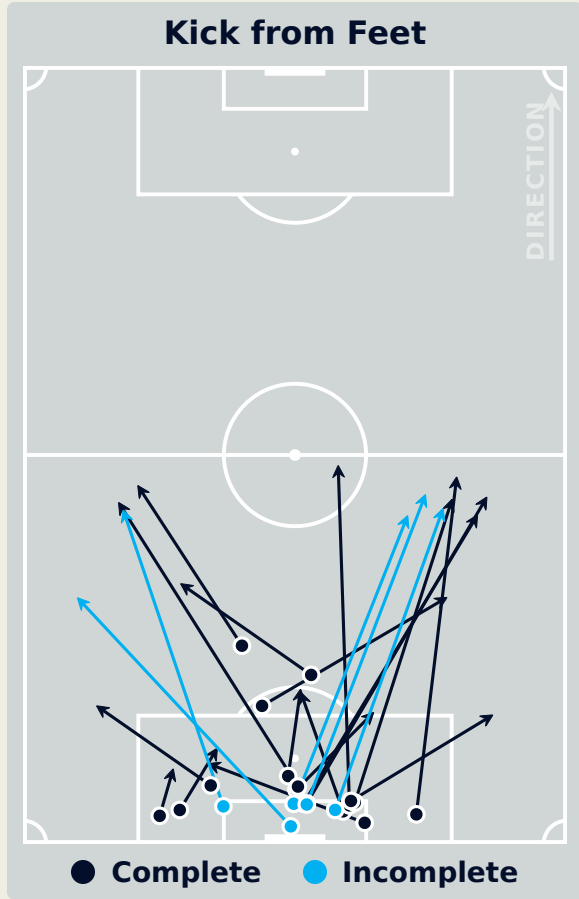
Germany GK Involvement Timeline



48
Total Involvements

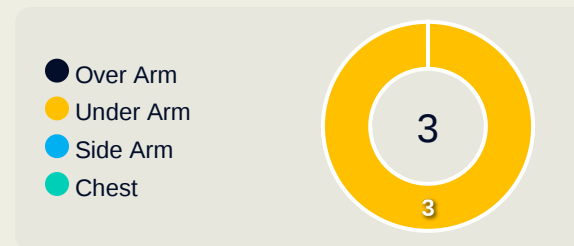
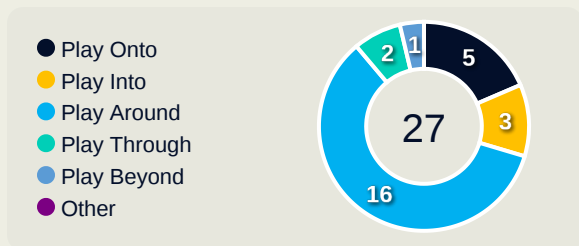
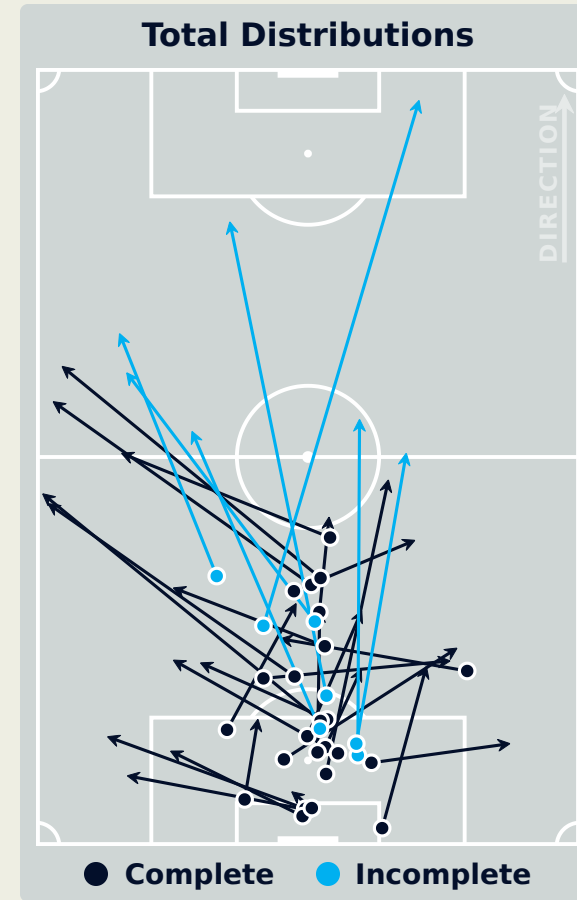
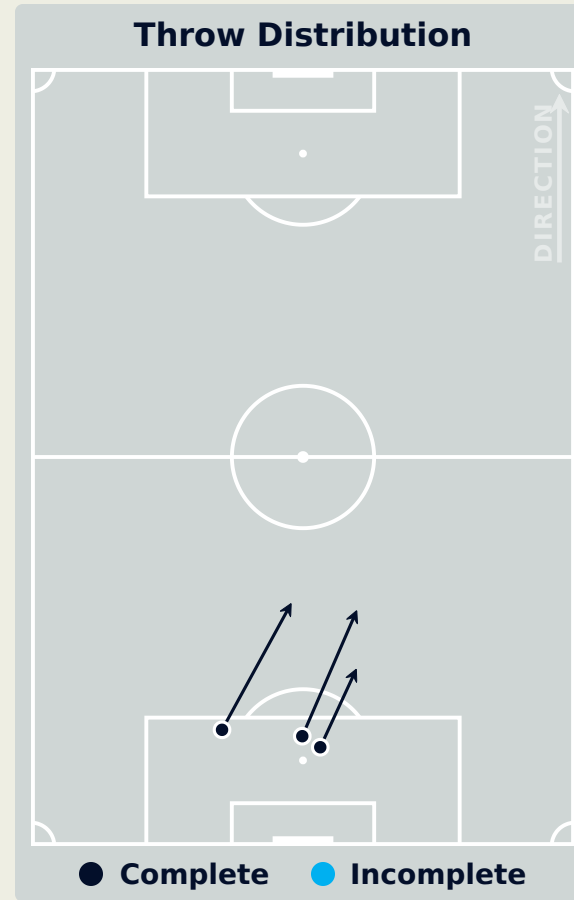
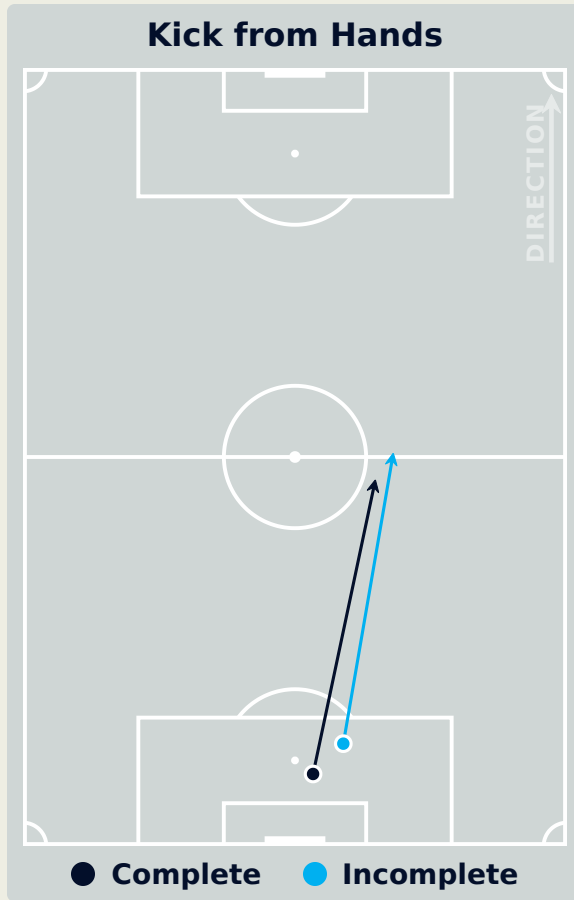
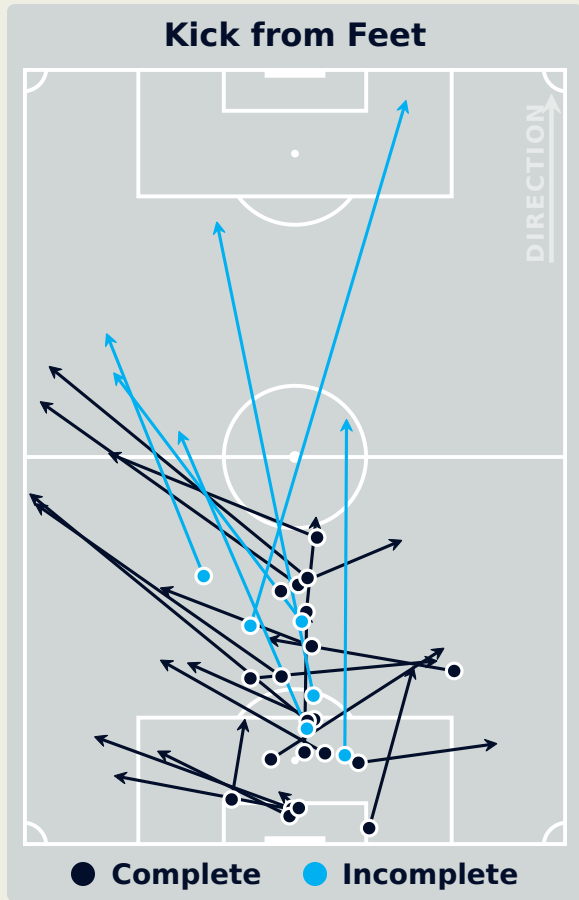
Goalkeeping Distribution

USA



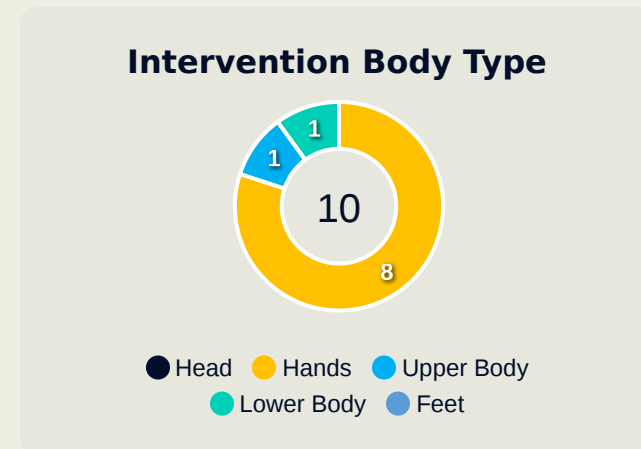
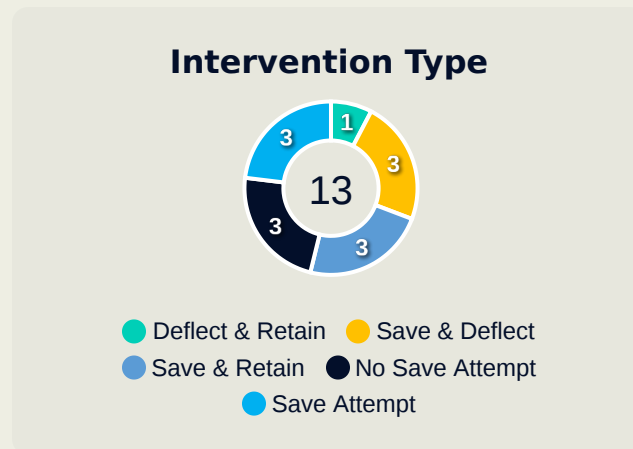
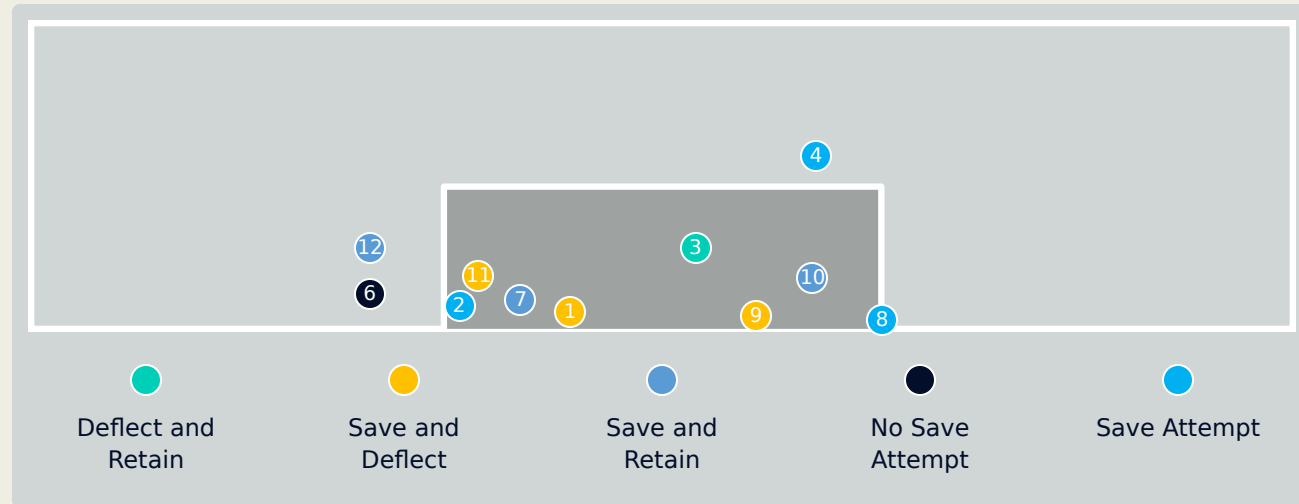
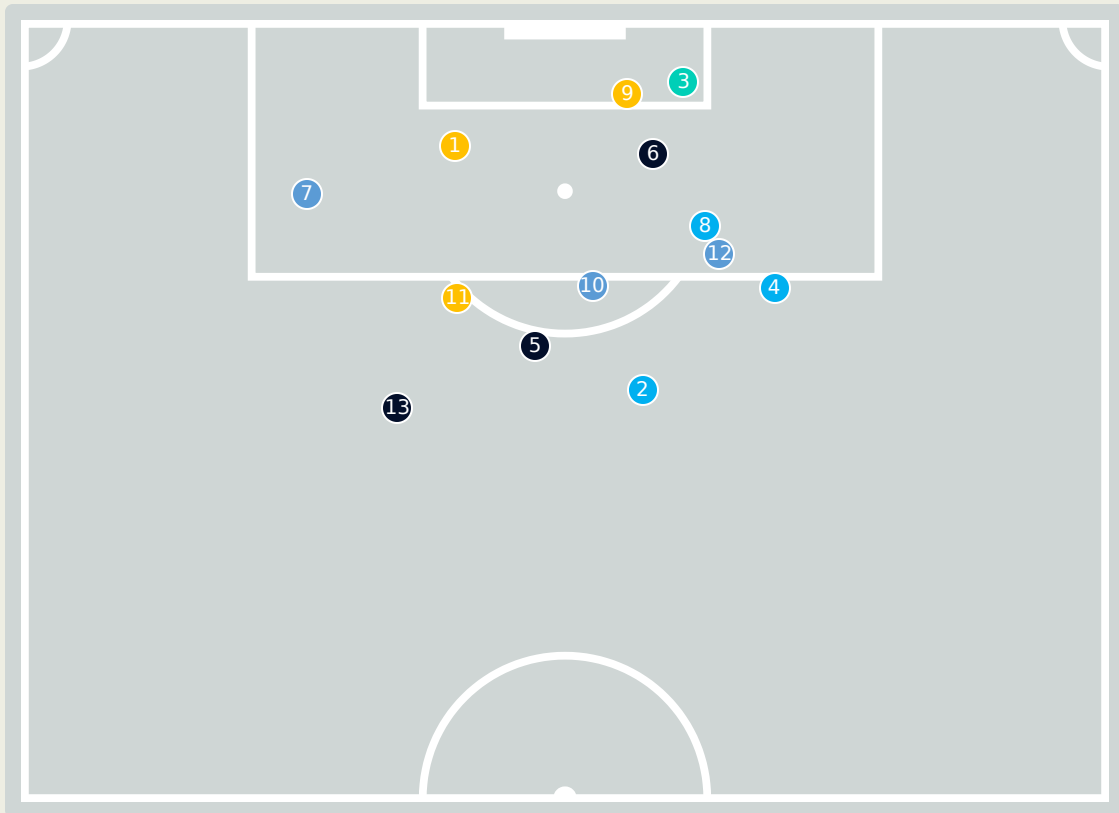
Goalkeeping Distribution

Germany



Goal Prevention

USA



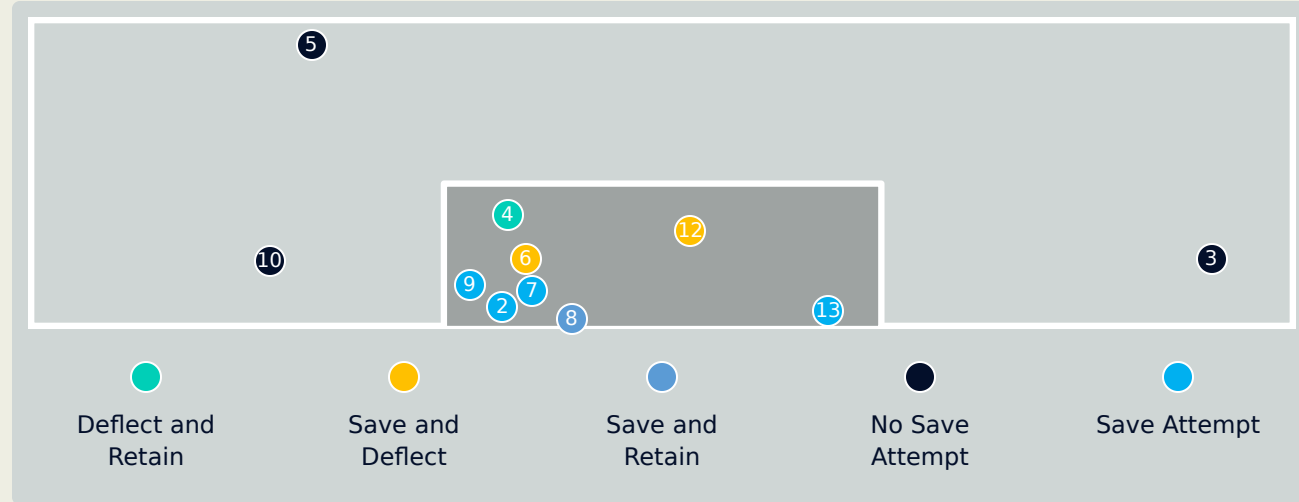
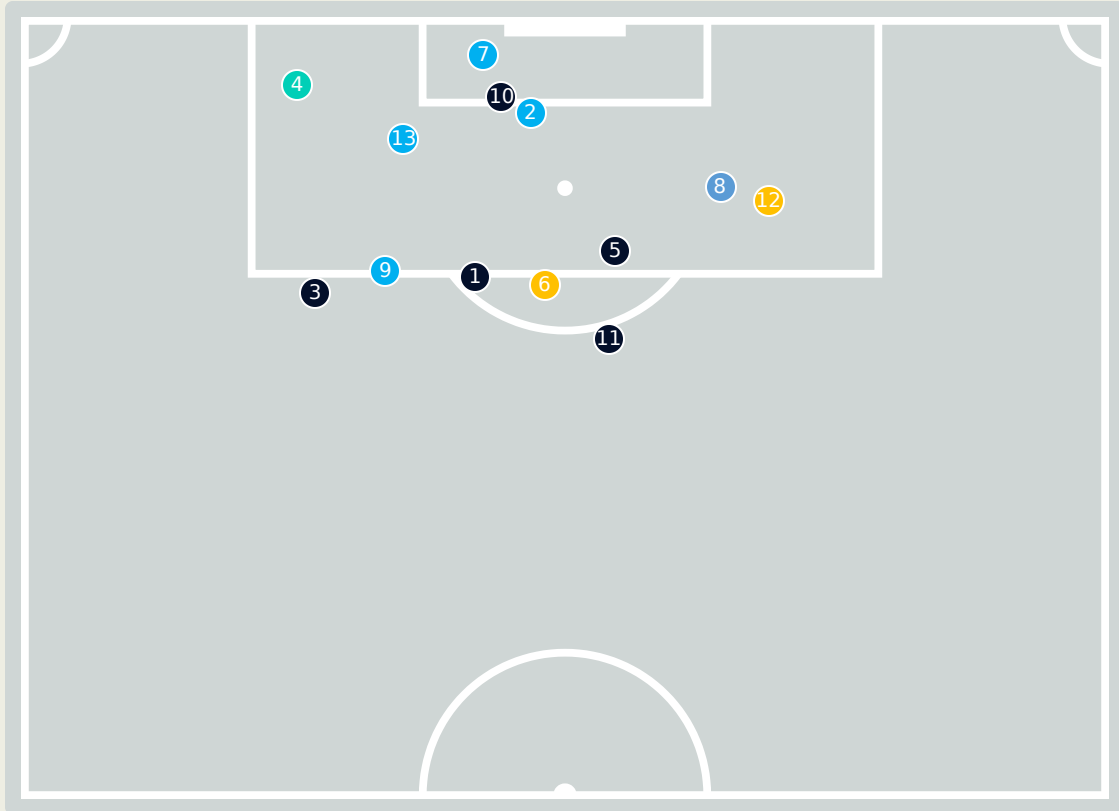
13
Total Attempts on Goal Faced

86
Save %

Total Attempts on Goal Faced	Total Goal Interventions	Save & Retain	Deflect & Retain	Save & Deflect	Save Attempt	No Save Attempt
13	6	3	0	3	3	3

Germany

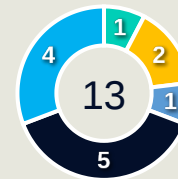
Goal Prevention



13
Total Attempts on Goal Faced

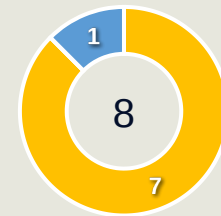
50
Save %

Intervention Type



- Deflect & Retain
- Save & Deflect
- Save & Retain
- No Save Attempt
- Save Attempt

Intervention Body Type

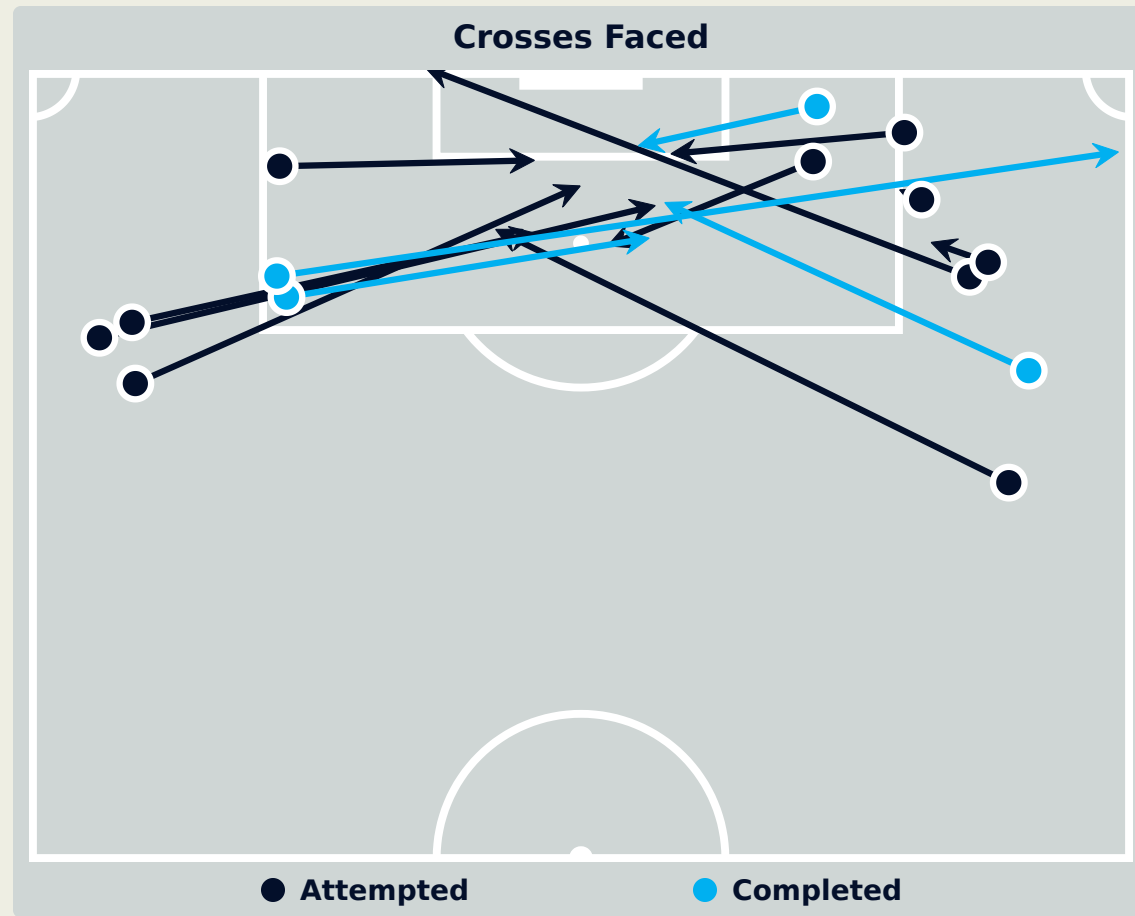
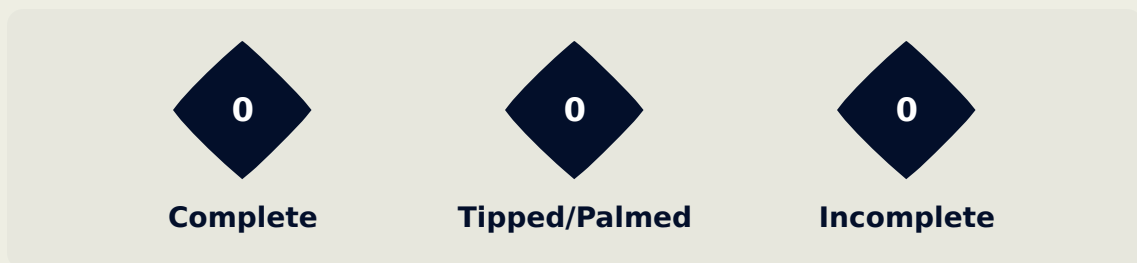
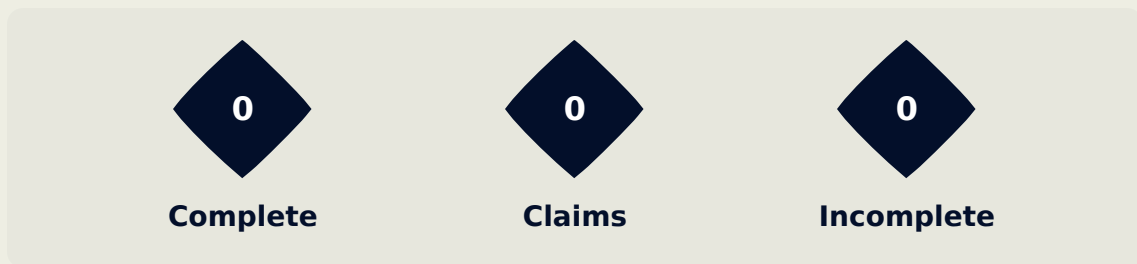


- Head
- Hands
- Upper Body
- Lower Body
- Feet

Total Attempts on Goal Faced	Total Goal Interventions	Save & Retain	Deflect & Retain	Save & Deflect	Save Attempt	No Save Attempt
13	3	1	0	2	4	5

USA

Aerial Control

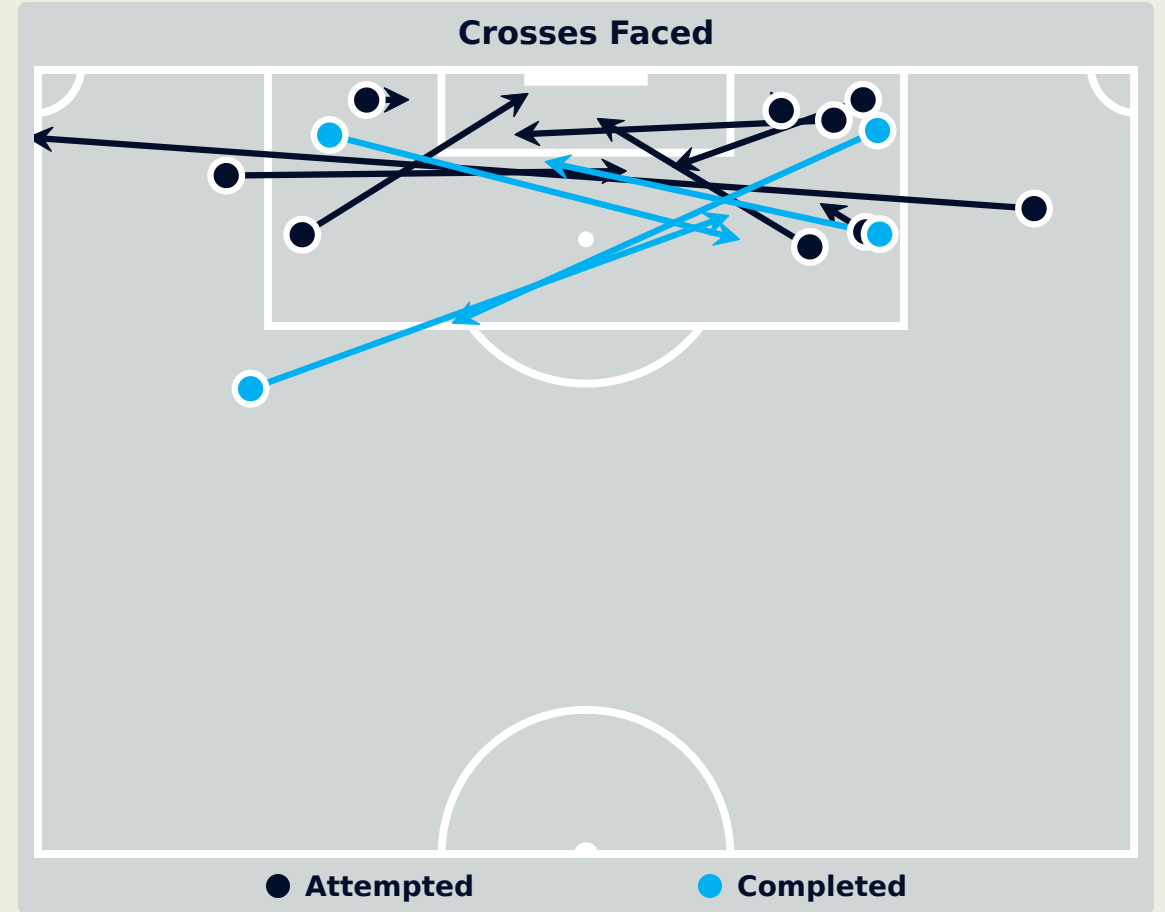
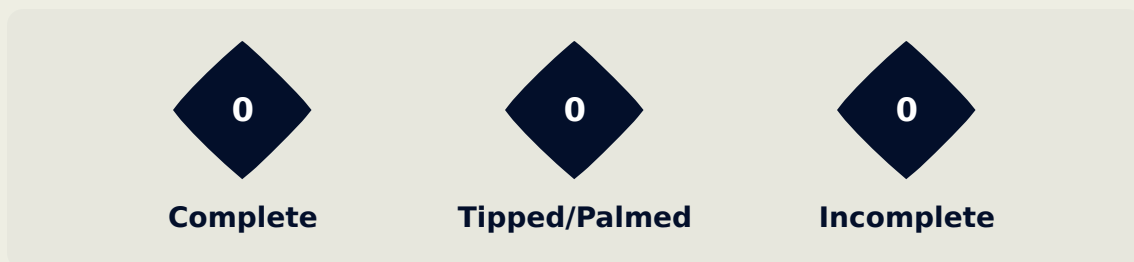
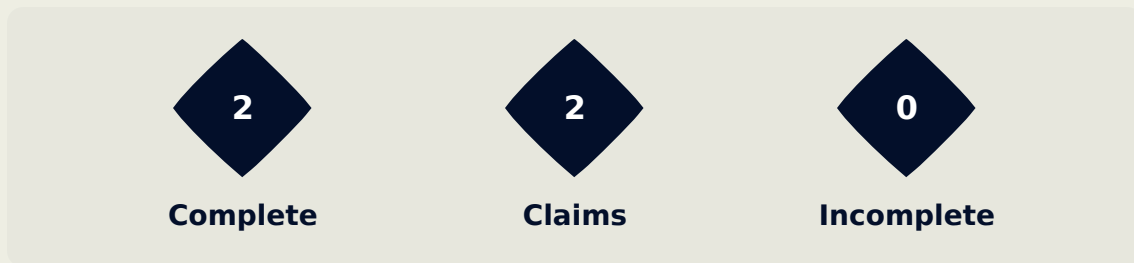


Delivery Types Faced

Total	In Swing	Out Swing	Driven	Lofted	Cutback	Push
16	3	7	1	2	0	3

Germany

Aerial Control



Delivery Types Faced

Total	In Swing	Out Swing	Driven	Lofted	Cutback	Push
18	4	2	0	4	2	6

FIFA[®]
W-OFT 2024

SET PLAYS

USA 4 - **1 Germany**

Set Plays

41
Total Set Plays

12
Total Free Kicks

0
Total Penalties

6
Total Corners

23
Total Throw Ins

Free Kicks	
Type	Total
Direct	11
Direct (on target)	0
Direct (off target)	0
Indirect	1

Corners			
Delivery Type	From Left Side	From Right Side	Total
Direct to Area	1	3	4
Short	1	1	2
Edge of Penalty Area	0	0	0

Corners	
Delivery Style	Total
Inswing	4
Outswing	0
Driven	0

Germany

Set Plays

36

Total Set Plays

6

Total Free Kicks

0

Total Penalties

1

Total Corners

29

Total Throw Ins

Free Kicks

Type	Total
Direct	4
Direct (on target)	0
Direct (off target)	1
Indirect	2

Corners

Delivery Type	From Left Side	From Right Side	Total
Direct to Area	0	1	1
Short	0	0	0
Edge of Penalty Area	0	0	0

Corners

Delivery Style	Total
Inswing	0
Outswing	1
Driven	0

FIFA[®]
W-OFT 2024

INDIVIDUAL DATA IN POSSESSION

USA 4 - **1 Germany**

In Possession - Distributions

USA

#	Player	Passes Attempted	Passes Completed	Pass Completion %	Switches of Play	Crosses Attempted	Crosses Completed	Line Breaks Attempted	Line Breaks Completed	Line Break Completion %	Ball Progressions	Take Ons	Step Ins	Attempts at Goal	Goals
1	NAEHER Alyssa	26	20	77%	0	0	0	12	9	75%	0	0	0	0	0
2	FOX Emily	81	73	90%	1	0	0	20	17	85%	2	0	2	0	0
4	GIRMA Naomi	77	74	96%	0	0	0	7	6	86%	0	0	0	0	0
5	RODMAN Trinity	30	22	73%	0	5	3	5	3	60%	6	3	3	2	0
7	DUNN Crystal	52	42	81%	0	1	1	20	13	65%	0	0	0	1	0
9	SWANSON Mallory	35	25	71%	1	3	1	11	7	64%	0	0	0	3	1
10	HORAN Lindsey	52	40	77%	0	0	0	19	11	58%	0	0	0	0	0
11	SMITH Sophia	11	11	100%	0	4	0	2	2	100%	0	0	0	5	2
12	DAVIDSON Tierna	34	31	91%	0	0	0	6	3	50%	1	1	0	0	0
16	LAVELLE Rose	36	28	78%	0	4	0	11	7	64%	0	0	0	1	0
17	COFFEY Samantha	39	34	87%	2	0	0	14	10	71%	1	1	0	0	0
6	KRUEGER Casey	2	1	50%	0	0	0	2	1	50%	0	0	0	0	0
8	WILLIAMS Lynn	3	2	67%	0	0	0	0	0	0%	0	0	0	1	1
13	NIGHSWONGER Jenna	1	1	100%	0	0	0	0	0	0%	2	1	1	0	0
14	SONNETT Emily	34	29	85%	0	1	0	13	9	69%	4	0	4	0	0

In Possession - Offers & Receptions

			Offer movement types						
#	Player	Total Offers	In Front	In Between	Out to In	In to Out	In Behind	No Movement	Offers Received
1	NAEHER Alyssa	2	0	0	0	0	0	2	1
2	FOX Emily	11	1	1	0	1	5	3	2
4	GIRMA Naomi	43	2	0	0	0	0	41	24
5	RODMAN Trinity	22	5	1	1	0	8	7	8
7	DUNN Crystal	24	5	0	0	0	5	14	12
9	SWANSON Mallory	44	3	17	4	3	12	5	13
10	HORAN Lindsey	47	19	21	0	1	2	4	26
11	SMITH Sophia	39	1	12	3	4	17	2	10
12	DAVIDSON Tierna	0	0	0	0	0	0	0	0
16	LAVELLE Rose	29	3	11	4	3	3	5	8
17	COFFEY Samantha	31	22	7	0	0	1	1	12
6	KRUEGER Casey	0	0	0	0	0	0	0	0
8	WILLIAMS Lynn	8	0	3	0	0	5	0	1
13	NIGHSWONGER Jenna	5	0	0	0	1	3	1	1
14	SONNETT Emily	9	3	0	0	0	2	4	7

In Possession - Distributions

Germany

#	Player	Passes Attempted	Passes Completed	Pass Completion %	Switches of Play	Crosses Attempted	Crosses Completed	Line Breaks Attempted	Line Breaks Completed	Line Break Completion %	Ball Progressions	Take Ons	Step Ins	Attempts at Goal	Goals
12	BERGER Ann-Katrin	32	25	78%	0	0	0	15	8	53%	0	0	0	0	0
3	HENDRICH Kathrin	45	43	96%	0	0	0	5	5	100%	1	0	1	0	0
5	HEGERING Marina	64	58	91%	1	0	0	19	14	74%	0	0	0	0	0
6	MINGE Janina	45	40	89%	0	0	0	14	12	86%	0	0	0	1	0
7	SCHUELLER Lea	21	14	67%	0	1	0	4	0	0%	0	0	0	2	0
9	NUESKEN Sjoeke	14	13	93%	0	0	0	2	2	100%	0	0	0	2	0
11	POPP Alexandra	32	26	81%	1	1	0	14	9	64%	2	0	2	0	0
15	GWINN Giulia	46	43	93%	0	2	1	18	16	89%	0	0	0	4	1
16	BRAND Jule	18	11	61%	0	2	0	7	4	57%	2	0	2	2	0
17	BUEHL Klara	24	20	83%	1	9	3	7	4	57%	0	0	0	1	0
19	RAUCH Felicitas	45	43	96%	0	1	0	12	9	75%	0	0	0	0	0
8	LOHMANN Sydney	9	8	89%	0	0	0	2	1	50%	0	0	0	1	0
14	SENSS Elisa	10	7	70%	0	0	0	2	0	0%	0	0	0	0	0

In Possession - Offers & Receptions

Germany

			Offer movement types						
#	Player	Total Offers	In Front	In Between	Out to In	In to Out	In Behind	No Movement	Offers Received
12	BERGER Ann-Katrin	15	0	0	0	0	0	15	10
3	HENDRICH Kathrin	3	0	0	0	0	0	3	3
5	HEGERING Marina	0	0	0	0	0	0	0	0
6	MINGE Janina	10	6	4	0	0	0	0	7
7	SCHUELLER Lea	20	0	5	0	0	15	0	4
9	NUESKEN Sjoeke	24	2	14	0	1	6	1	6
11	POPP Alexandra	27	16	9	0	1	1	0	11
15	GWINN Giulia	43	10	8	0	0	8	17	18
16	BRAND Jule	49	4	6	4	2	13	20	10
17	BUEHL Klara	33	1	2	1	4	15	10	13
19	RAUCH Felicitas	6	3	0	0	0	0	3	1
8	LOHMANN Sydney	24	3	18	1	1	0	1	6
14	SENSS Elisa	19	3	11	2	1	0	2	7

FIFA[®]
W-OFT 2024

INDIVIDUAL DATA OUT OF POSSESSION

USA 4 - 1 Germany

Out of Possession

USA

#	Player	Tackles Made / Won	Blocks	Interceptions	Pressing Direct	Pressing Indirect	Duels Won - Aerial	Duels Won - Physical	Possession Contests won	Clearances	Loose Ball Receptions	Pushing On	Pushing On into Pressing	Possession Regains	Possession Interrupted
1	NAEHER Alyssa	0 / 0	0	0	0	0	0	0	0	0	3	0	0	7	0
2	FOX Emily	5 / 3	0	1	7	12	1	0	1	4	10	23	10	6	3
4	GIRMA Naomi	2 / 2	1	0	2	3	1	0	1	5	5	6	1	4	2
5	RODMAN Trinity	2 / 2	1	0	2	8	3	1	4	1	5	2	0	3	0
7	DUNN Crystal	2 / 0	5	1	4	13	0	0	0	8	9	17	6	6	2
9	SWANSON Mallory	1 / 1	4	1	4	14	1	0	1	1	8	7	5	3	3
10	HORAN Lindsey	1 / 0	1	0	5	7	1	0	1	0	12	7	2	2	1
11	SMITH Sophia	1 / 0	2	0	0	22	0	0	1	0	3	12	6	0	3
12	DAVIDSON Tierna	0 / 0	0	0	2	5	1	0	1	7	5	2	1	3	3
16	LAVELLE Rose	1 / 1	0	0	3	19	1	0	3	2	5	2	1	4	1
17	COFFEY Samantha	3 / 1	1	0	5	12	0	0	0	1	8	13	10	2	2
6	KRUEGER Casey	0 / 0	0	0	0	1	0	0	0	0	0	1	1	0	0
8	WILLIAMS Lynn	1 / 0	0	0	1	1	0	0	0	0	1	0	0	0	0
13	NIGHSWONGER Jenna	0 / 0	1	0	0	2	0	0	0	0	0	0	0	0	0
14	SONNETT Emily	1 / 0	1	0	2	1	0	0	0	2	4	3	1	3	2

Out of Possession

Germany

#	Player	Tackles Made / Won	Blocks	Interceptions	Pressing Direct	Pressing Indirect	Duels Won - Aerial	Duels Won - Physical	Possession Contests won	Clearances	Loose Ball Receptions	Pushing On	Pushing On into Pressing	Possession Regains	Possession Interrupted
12	BERGER Ann-Katrin	0 / 0	0	0	0	0	0	0	0	1	1	0	0	5	1
3	HENDRICH Kathrin	3 / 1	5	2	6	3	0	0	0	5	7	8	2	5	3
5	HEGERING Marina	1 / 0	7	2	1	2	1	0	1	4	6	2	1	7	4
6	MINGE Janina	0 / 0	2	1	3	11	0	0	1	7	11	1	1	1	7
7	SCHUELLER Lea	0 / 0	2	0	1	17	1	0	2	0	4	7	2	1	0
9	NUESKEN Sjoeke	4 / 1	0	0	2	12	0	0	1	0	2	2	0	1	2
11	POPP Alexandra	2 / 0	1	0	5	9	3	0	4	5	4	12	2	2	5
15	GWINN Giulia	1 / 0	5	0	4	14	1	0	1	1	2	24	8	3	3
16	BRAND Jule	2 / 0	1	1	9	19	1	0	1	1	7	29	11	2	0
17	BUEHL Klara	4 / 2	0	0	1	25	0	0	0	3	5	20	12	3	2
19	RAUCH Felicitas	5 / 3	5	0	7	14	1	0	1	8	2	22	5	6	7
8	LOHMANN Sydney	0 / 0	2	0	1	12	0	0	0	0	3	2	1	0	2
14	SENSS Elisa	1 / 0	1	0	3	8	0	0	0	0	1	6	5	1	0

FIFA[®]
W-OFT 2024

INDIVIDUAL DATA PHYSICAL

USA 4 - 1 Germany

Physical Data

USA

#	Player	Total Distance (m)	Zone 1: 0-7 km/h (m)	Zone 2: 7-15 km/h (m)	Zone 3: 15-20 km/h (m)	Zone 4: 20-25 km/h (m)	Zone 5: 25+ km/h (m)	High Speed Runs (Zone 4)	Sprints (Zone 5)	Top Speed (km/h)
1	NAEHER Alyssa	5155.6	4414.8	643.8	97.0	0	0	0	0	19.0
2	FOX Emily	10876.4	3753.5	5351.5	1246.9	433.0	91.5	52.0	9.0	28.9
4	GIRMA Naomi	10482.5	3941.8	5040.7	1155.9	296.1	47.9	38.0	4.0	28.4
5	RODMAN Trinity	10695.0	4378.8	3914.1	1350.1	710.8	341.2	85.0	21.0	31.4
7	DUNN Crystal	10986.7	4080.0	4968.9	1327.0	535.1	75.9	46.0	7.0	28.3
9	SWANSON Mallory	11019.8	4335.6	3964.0	1699.3	774.6	246.2	80.0	18.0	30.3
10	HORAN Lindsey	12169.4	3952.4	5907.1	1734.5	575.5	0	36.0	0	25.0
11	SMITH Sophia	9491.2	3934.5	3701.6	1059.5	580.0	215.5	75.0	17.0	28.3
12	DAVIDSON Tierna	4013.9	1550.2	1738.7	569.6	155.4	0	17.0	0	23.8
16	LAVELLE Rose	11655.2	4419.0	4572.1	1718.1	657.5	288.5	75.0	16.0	30.0
17	COFFEY Samantha	10959.3	4350.6	4861.2	1327.2	399.2	21.1	39.0	4.0	25.9
6	KRUEGER Casey	480.1	147.3	265.3	64.7	2.8	0	1.0	0	20.0
8	WILLIAMS Lynn	1337.2	481.2	483.5	189.5	134.0	49.1	16.0	5.0	29.7
13	NIGHSWONGER Jenna	631.3	140.8	291.1	130.9	65.1	3.5	8.0	1.0	25.3
14	SONNETT Emily	6539.5	2298.9	2961.7	1066.1	191.3	21.4	24.0	1.0	26.2

Physical Data

Germany

#	Player	Total Distance (m)	Zone 1: 0-7 km/h (m)	Zone 2: 7-15 km/h (m)	Zone 3: 15-20 km/h (m)	Zone 4: 20-25 km/h (m)	Zone 5: 25+ km/h (m)	High Speed Runs (Zone 4)	Sprints (Zone 5)	Top Speed (km/h)
12	BERGER Ann-Katrin	5623.3	4212.5	1262.3	142.8	5.7	0	2.0	0	20.4
3	HENDRICH Kathrin	10331.3	4305.0	4476.2	1052.6	447.3	50.2	45.0	8.0	27.0
5	HEGERING Marina	10676.5	3774.3	5081.2	1332.4	441.9	46.6	39.0	5.0	27.3
6	MINGE Janina	12302.1	4114.7	5852.2	1825.4	447.9	61.8	40.0	4.0	27.3
7	SCHUELLER Lea	9534.8	4279.4	3719.6	1039.3	421.8	74.7	46.0	5.0	28.2
9	NUESKEN Sjoeke	8352.7	2638.1	4108.8	1151.5	450.8	3.5	37.0	1.0	25.3
11	POPP Alexandra	8433.3	3379.5	3988.6	735.8	271.5	57.9	28.0	5.0	27.4
15	GWINN Giulia	12139.2	3744.7	5638.9	2101.8	555.9	98.0	62.0	8.0	27.5
16	BRAND Jule	10166.6	4963.4	3264.3	1128.0	564.1	246.7	72.0	17.0	31.3
17	BUEHL Klara	10928.6	3879.3	4688.1	1560.4	710.5	90.3	67.0	6.0	28.7
19	RAUCH Felicitas	11177.0	4065.5	5205.5	1322.7	466.2	117.2	51.0	9.0	27.9
8	LOHMANN Sydney	3584.2	844.7	1947.1	555.4	184.9	52.1	18.0	3.0	28.5
14	SENSS Elisa	2340.7	628.8	1102.4	357.4	186.5	65.7	22.0	4.0	27.6

FIFA[®]
W-OFT 2024