

FIFA®

W-OFT 2024

Zambia 1 - 4 Germany

Group B - Match 16

31 July 2024

19:00 Kick Off

Stade Geoffroy-Guichard



POST MATCH SUMMARY REPORT

Match Summary - Teams

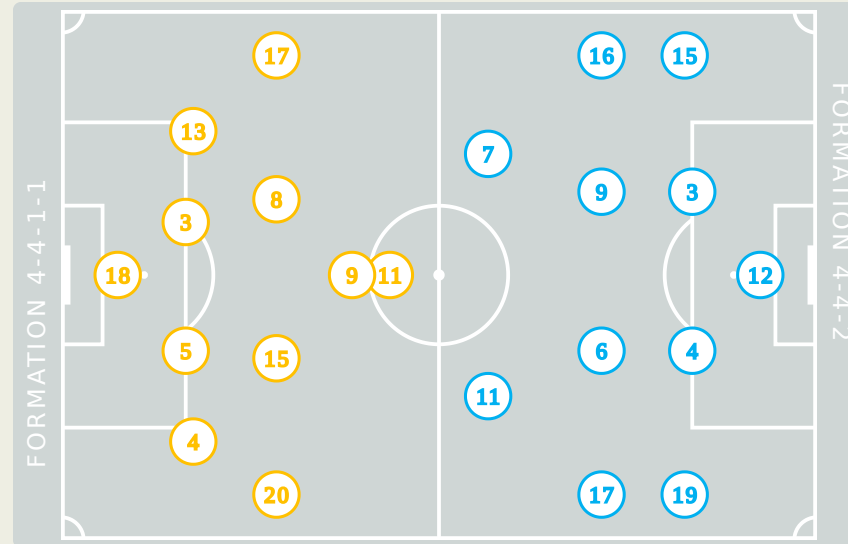
Zambia

STARTING

- 18 GK MUSOLE Ngambo
- 3 DF MWEEMBA Lushomo
- 4 DF SIAMFUKO Esther
- 5 DF ZULU Pauline
- 8 MF LUBANDJI Ochumba
- 9 FW MUPOPO Kabange
- 11 FW BANDA Barbra 49'
- 13 DF TEMBO Martha
- 15 FW CHANDA Hellen 35' 65'
- 17 MF KUNDANANJI Racheal
- 20 MF NACHULA Racheal 45'

SUBSTITUTES

- 1 GK MUSONDA Catherine
- 22 GK SAKALA Eunice
- 2 DF BANDA Diana
- 6 MF CHILESHE Rhoda
- 7 MF ZULU Misozi
- 10 MF CHANDA Grace
- 12 MF CHITUNDU Avell
- 14 MF CHILUFYA Prisca 45'
- 16 DF MUCHINGA Esther
- 19 DF PHIRI Vast
- 21 MF WILOMBE Mary 65'



Germany

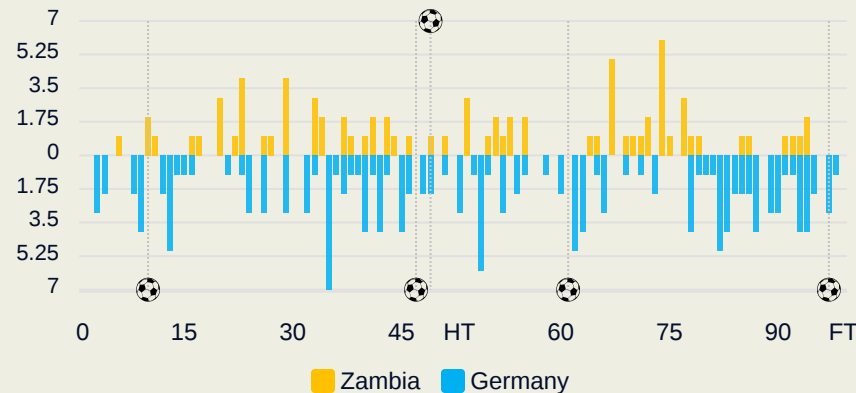
STARTING

- BERGER Ann-Katrin GK 12
- 22' HENDRICH Kathrin DF 3
- SCHULZE SOLANO Bibiane DF 4
- MINGE Janina MF 6
- 69' 61' 10' SCHUELLER Lea FW 7
- 89' NUESKEN Sjoeke MF 9
- 69' POPP Alexandra FW 11
- GWINN Giulia DF 15
- 45' BRAND Jule MF 16
- 47' BUEHL Klara MF 17
- RAUCH Felicitas DF 19

SUBSTITUTES

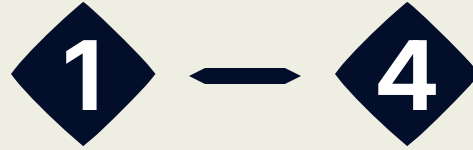
- FROHMS Merle GK 1
- JOHANNES Stina GK 22
- LINDER Sarai DF 2
- HEGERING Marina DF 5
- 69' LOHMANN Sydney MF 8
- 69' FREIGANG Laura FW 10
- 22' DOORSOUN Sara DF 13
- 90+7' 89' SENSS Elisa MF 14
- 45' ENDEMANN Vivien MF 18
- WOLTER Pia-Sophie DF 20
- ANYOMI Nicole FW 21

Distribution in the Final Third



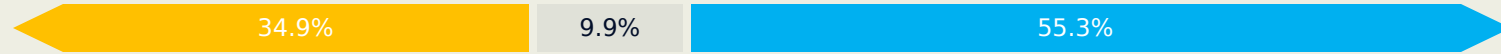
Match Summary - Key Statistics

Zambia



Germany

Possession



Total

Total

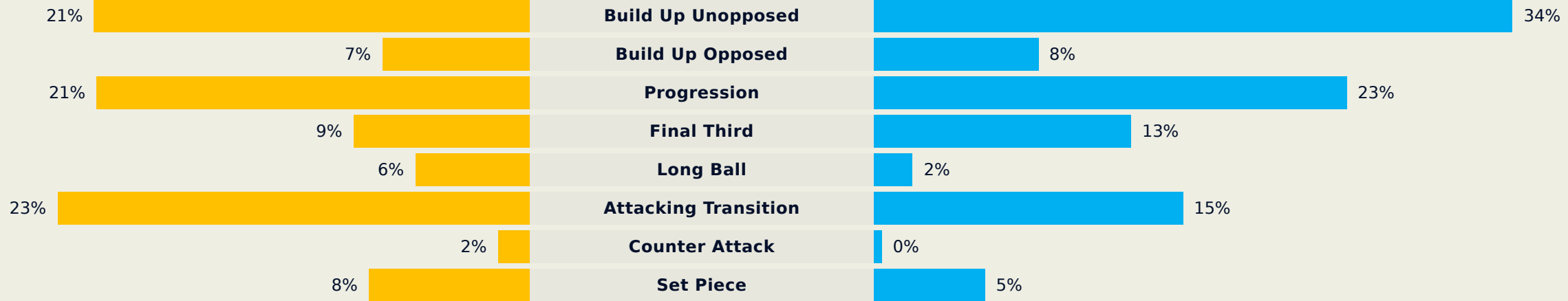
1	Goals	4
8 (3)	Attempts at Goal (On Target)	19 (9)
338 (221)	Total Passes (Complete)	638 (549)
65 %	Pass Completion %	86 %
60	Completed Line Breaks	141
3	Defensive Line Breaks	18
48	Receptions in the Final Third	120
10	Crosses	23
13	Ball Progressions	17
226 (41)	Defensive Pressures Applied (Direct Pressures)	127 (40)
57	Forced Turnovers	64
90	Second Balls	105
113.4 km	Total Distance Covered	118.8 km
5.2 km	Zone 4 - Low Speed Sprinting: 20-25 km/h	4.4 km

Zambia

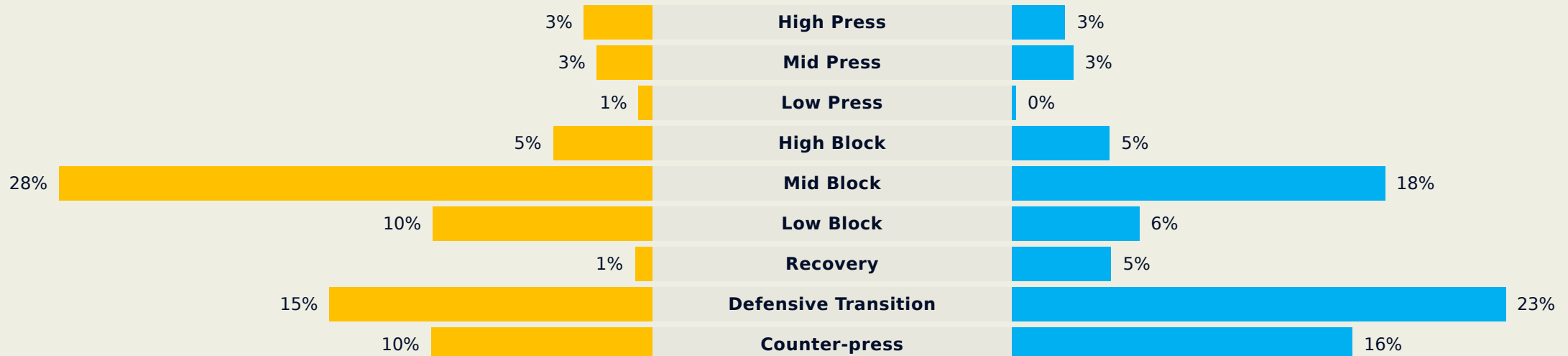
Phases of Play

Germany

IN POSSESSION



OUT OF POSSESSION

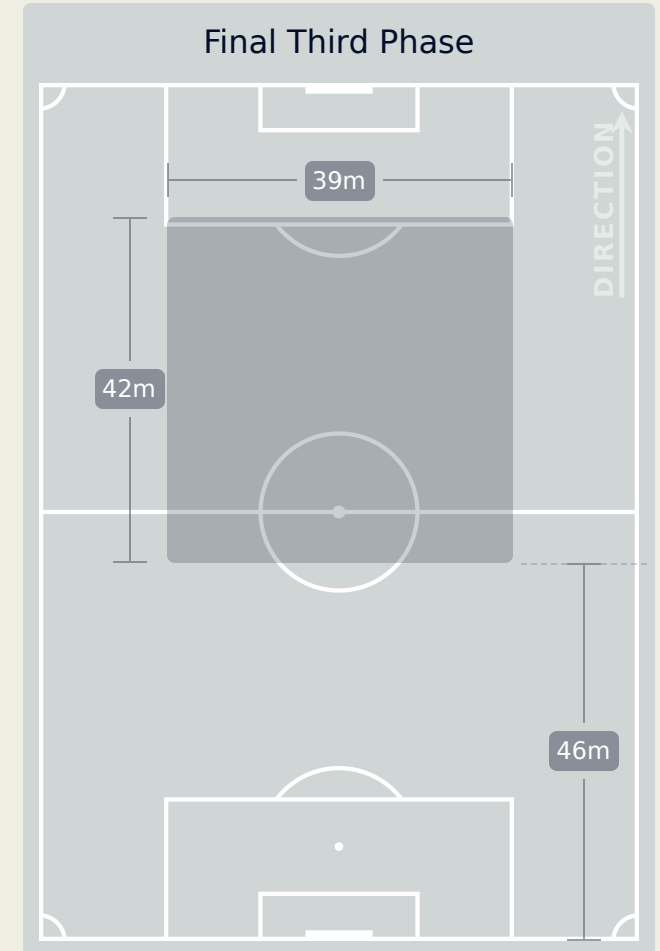
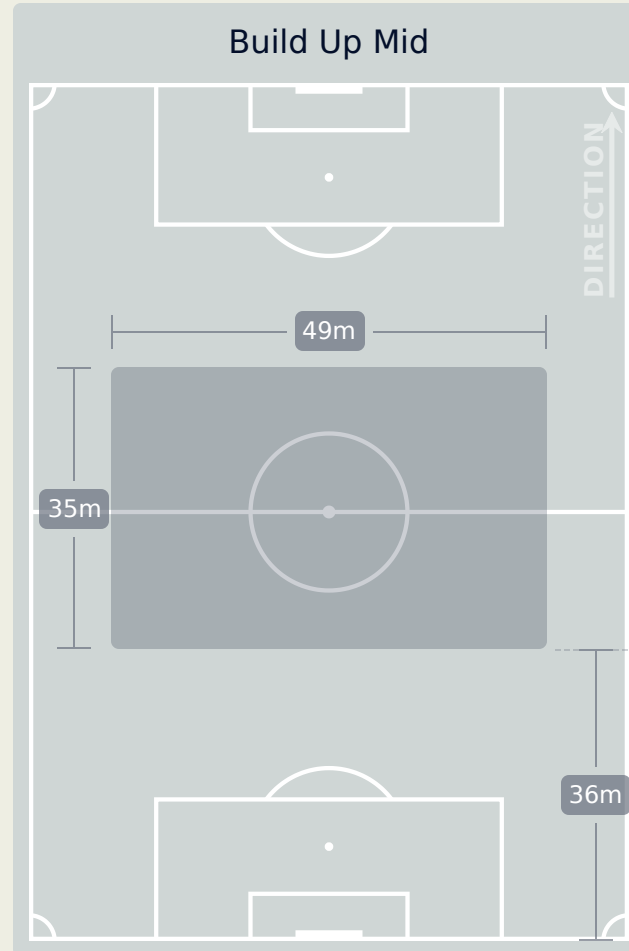
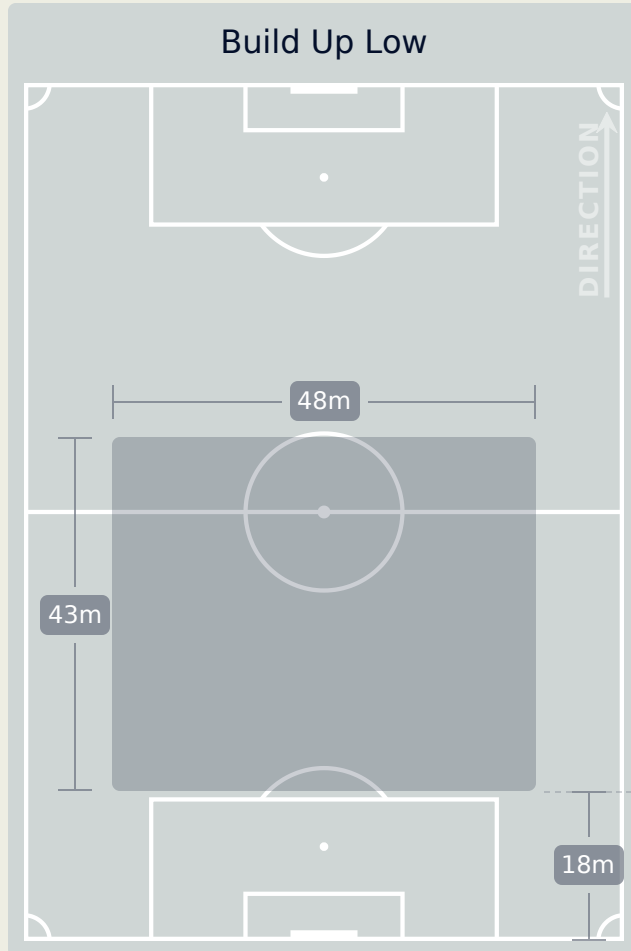


FIFA[®]
W-OFT 2024

IN POSSESSION
Zambia 1 - 4 Germany

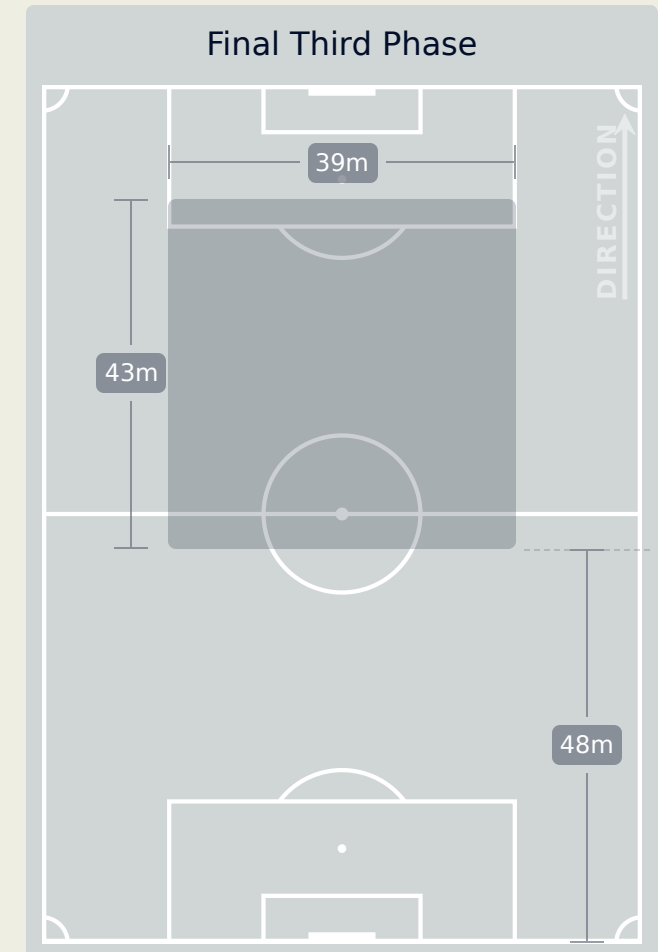
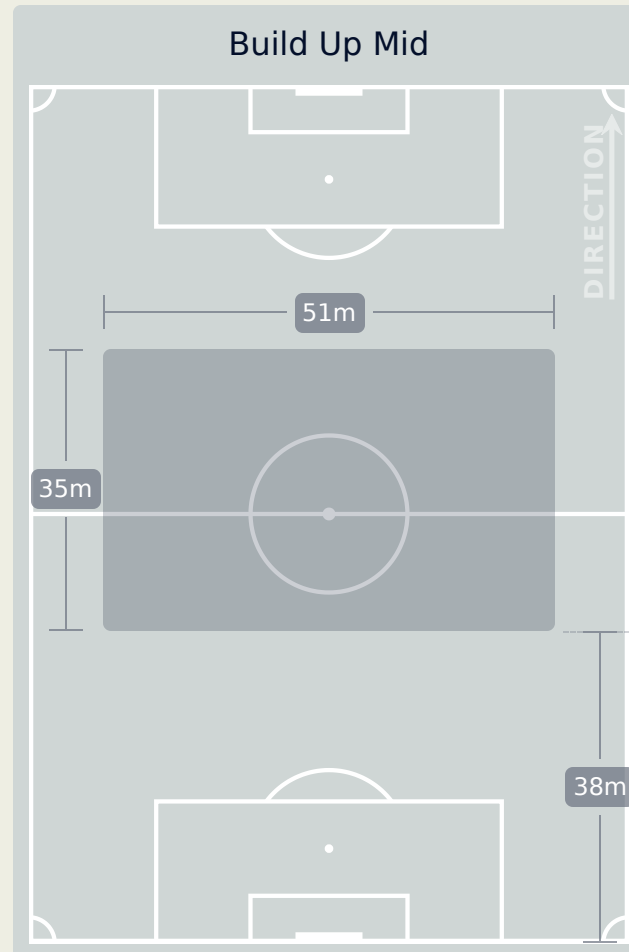
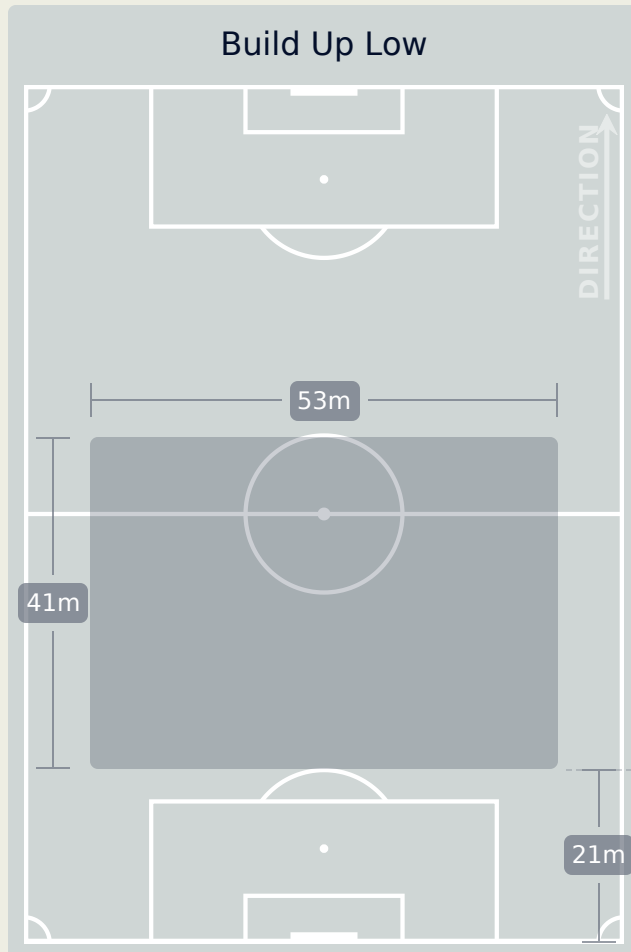
In Possession Line Height & Team Length

Zambia



In Possession Line Height & Team Length

Germany

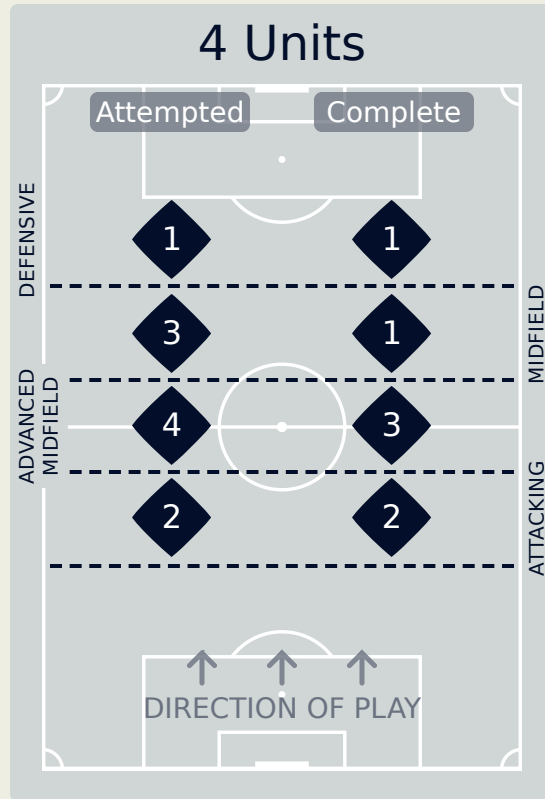
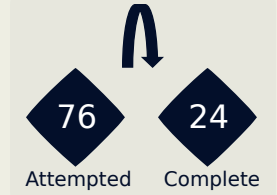
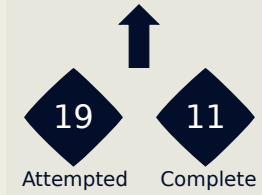


Line Breaks

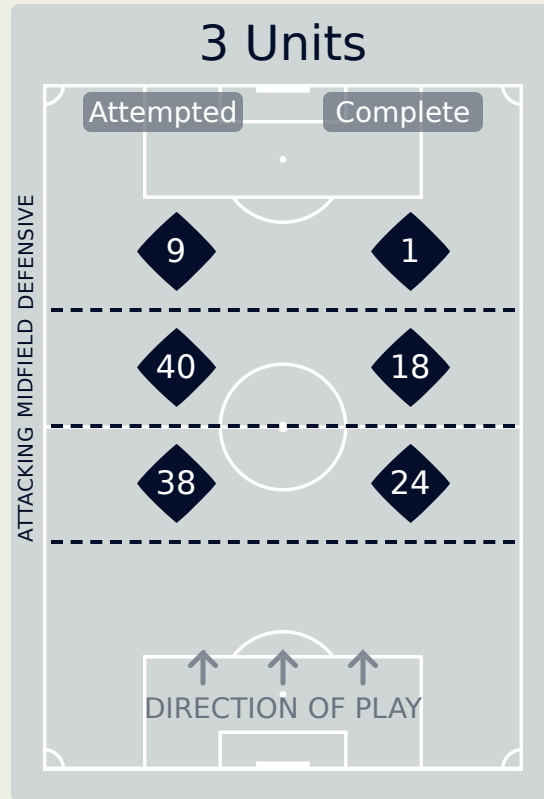
Zambia

Attempted Line Breaks

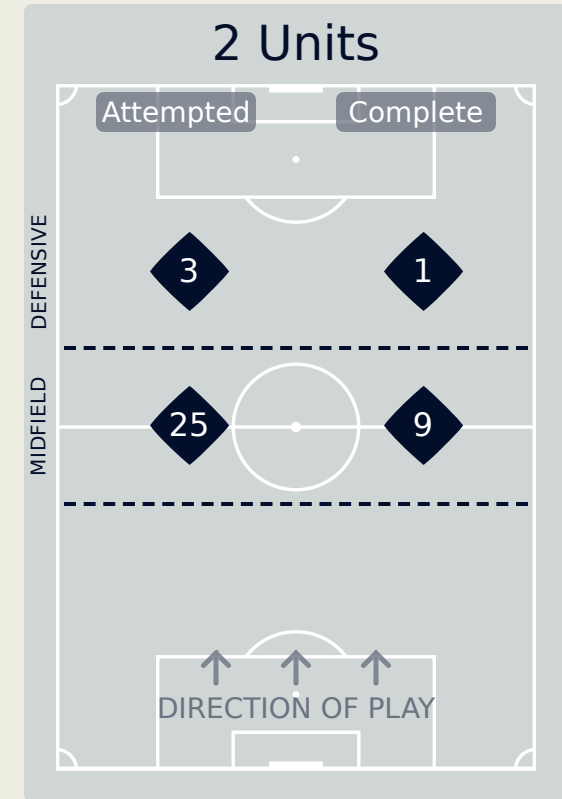
125



Attempted Line Breaks	10
Inside Shape	5
Outside Shape	5



Attempted Line Breaks	87
Inside Shape	61
Outside Shape	26



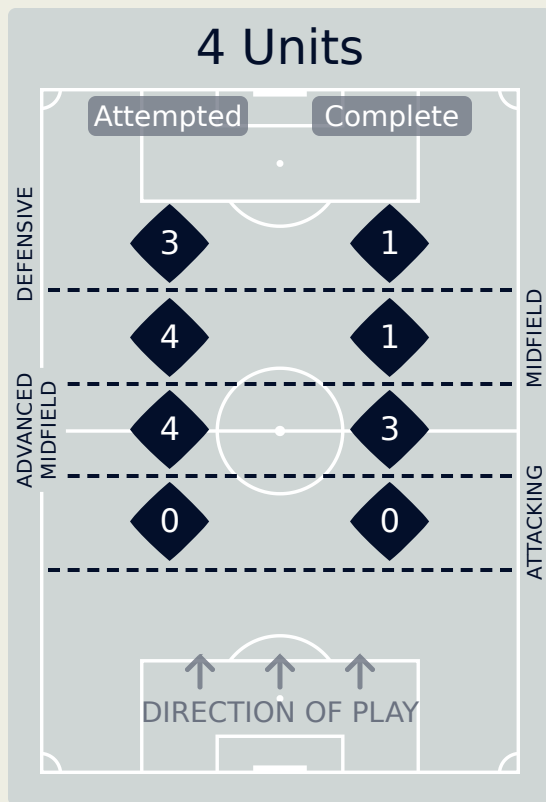
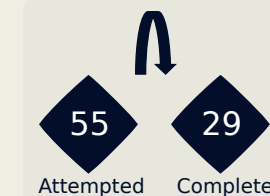
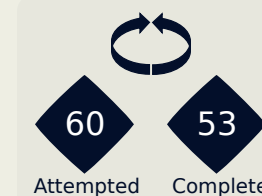
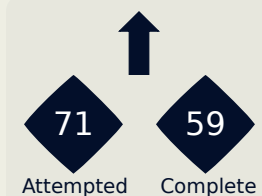
Attempted Line Breaks	28
Inside Shape	23
Outside Shape	5

Line Breaks

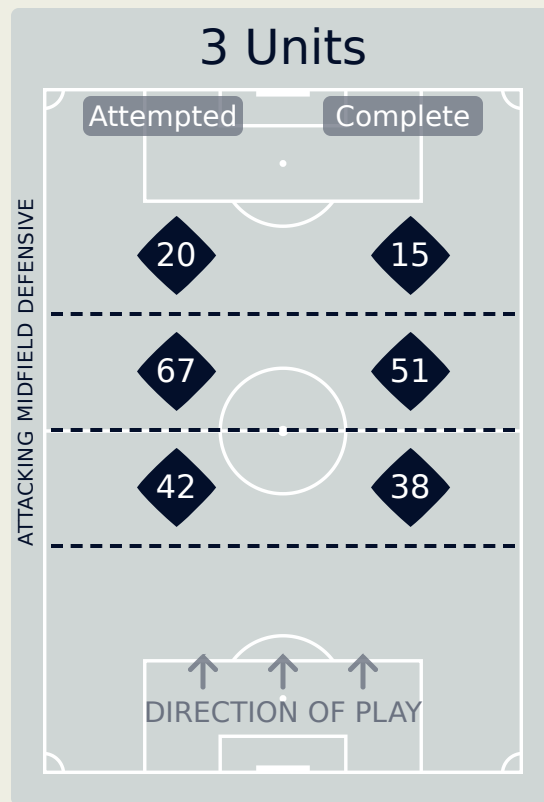
Germany

Attempted Line Breaks

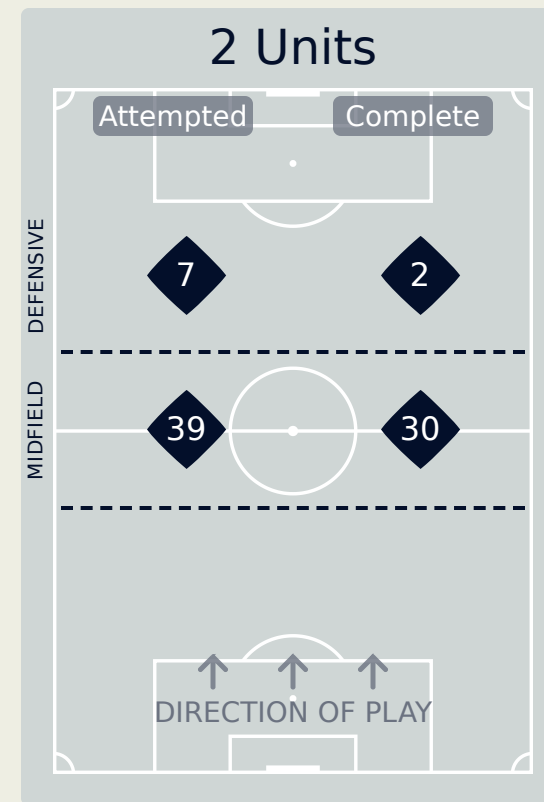
186



Attempted Line Breaks	11
Inside Shape	7
Outside Shape	4



Attempted Line Breaks	129
Inside Shape	77
Outside Shape	52



Attempted Line Breaks	46
Inside Shape	35
Outside Shape	11

Line Breaks

Zambia

					4 Units				3 Units			2 Units		Direction			Distribution Type		
#	Player	Line Breaks Attempted	Line Breaks Completed	Line Break Completion %	Attacking Line	Attacking Midfield Line	Midfield Line	Defensive Line	Attacking Line	Midfield Line	Defensive Line	Midfield Line	Defensive Line	Through	Around	Over	Pass	Cross	Ball Progression
18	MUSOLE Ngambo	12	2	17%	0	0	1	0	6	2	0	2	1	0	0	12	12	0	0
3	MWEEMBA Lushomo	13	6	46%	0	2	0	0	4	3	1	3	0	1	2	10	13	0	0
4	SIAMFUKO Esther	22	10	45%	0	0	0	0	9	5	1	7	0	0	6	16	21	1	0
5	ZULU Pauline	11	6	55%	1	0	0	0	4	4	0	1	1	5	1	5	10	1	0
8	LUBANDJI Ochumba	11	5	45%	0	1	1	0	1	4	1	3	0	4	3	4	11	0	0
9	MUPOPO Kabange	5	2	40%	0	0	0	0	0	5	0	0	0	3	1	1	3	0	2
11	BANDA Barbra	5	1	20%	0	0	0	0	0	2	2	1	0	0	2	3	3	1	1
13	TEMBO Martha	22	13	59%	1	1	0	0	8	6	0	5	1	2	9	11	21	1	0
15	CHANDA Hellen	3	2	67%	0	0	1	0	1	0	0	1	0	0	1	2	3	0	0
17	KUNDANANJI Racheal	9	5	56%	0	0	0	1	0	5	2	1	0	3	0	6	8	1	0
20	NACHULA Racheal	1	1	100%	0	0	0	0	0	1	0	0	0	0	0	1	1	0	0
14	CHILUFYA Prisca	5	3	60%	0	0	0	0	1	3	0	1	0	0	3	2	4	0	1
21	WILOMBE Mary	6	4	67%	0	0	0	0	4	0	2	0	0	1	2	3	6	0	0

Line Breaks

Germany

					4 Units				3 Units			2 Units		Direction			Distribution Type		
#	Player	Line Breaks Attempted	Line Breaks Completed	Line Break Completion %	Attacking Line	Attacking Midfield Line	Midfield Line	Defensive Line	Attacking Line	Midfield Line	Defensive Line	Midfield Line	Defensive Line	Through	Around	Over	Pass	Cross	Ball Progression
12	BERGER Ann-Katrin	14	9	64%	0	0	0	0	6	5	0	3	0	4	0	10	14	0	0
3	HENDRICH Kathrin	1	1	100%	0	0	0	0	0	0	0	1	0	1	0	0	1	0	0
4	SCHULZE SOLANO Bibiane	18	14	78%	0	1	0	0	6	2	2	6	1	2	6	10	18	0	0
6	MINGE Janina	26	23	88%	0	1	0	0	7	11	0	7	0	14	8	4	25	0	1
7	SCHUELLER Lea	4	2	50%	0	0	0	0	0	1	1	1	1	1	2	1	3	0	1
9	NUESKEN Sjoeke	19	14	74%	0	0	0	1	1	11	3	3	0	11	4	4	19	0	0
11	POPP Alexandra	12	7	58%	0	0	0	1	0	7	1	1	2	7	3	2	12	0	0
15	GWINN Giulia	25	19	76%	0	0	0	0	9	8	2	4	2	3	13	9	22	1	2
16	BRAND Jule	5	3	60%	0	0	0	0	0	2	1	1	1	3	2	0	4	0	1
17	BUEHL Klara	5	5	100%	0	0	0	0	0	4	0	1	0	3	2	0	5	0	0
19	RAUCH Felicitas	24	17	71%	0	2	1	0	5	7	3	6	0	7	8	9	24	0	0
8	LOHMANN Sydney	7	7	100%	0	0	1	0	0	1	3	2	0	4	2	1	7	0	0
10	FREIGANG Laura	2	1	50%	0	0	1	0	0	1	0	0	0	0	2	0	2	0	0
13	DOORSOUN Sara	15	12	80%	0	0	1	0	8	3	0	3	0	9	2	4	15	0	0
14	SENSS Elisa	2	2	100%	0	0	0	0	0	1	1	0	0	0	2	0	2	0	0
18	ENDEMANN Vivien	7	5	71%	0	0	0	1	0	3	3	0	0	2	4	1	5	0	2

Passing Networks

Zambia

#	Passes From ↓ to →	MUSOLE Ngambo	MWEEMBA Lushomo	SIAMFUKO Esther	ZULU Pauline	LUBANDJI Ochumba	MUPOPO Kabange	BANDA Barbra	TEMBO Martha	CHANDA Hellen	KUNDANANJI Racheal	NACHULA Racheal	CHILUFYA Prisca	WILOMBE Mary
18	MUSOLE Ngambo		9	3	9	0	0	2	0	0	0	0	0	0
3	MWEEMBA Lushomo	0		4	1	2	0	0	10	1	2	0	0	0
4	SIAMFUKO Esther	1	0		4	0	2	2	0	1	0	2	7	2
5	ZULU Pauline	3	1	14		3	1	0	3	0	2	1	0	0
8	LUBANDJI Ochumba	0	1	2	0		0	5	2	0	3	1	1	0
9	MUPOPO Kabange	0	0	0	2	1		3	3	2	2	0	0	1
11	BANDA Barbra	0	4	0	0	1	1		0	1	3	0	1	0
13	TEMBO Martha	0	4	0	3	3	1	1		3	3	0	0	3
15	CHANDA Hellen	0	1	4	1	0	1	0	4		0	1	1	0
17	KUNDANANJI Racheal	0	0	0	0	0	2	6	2	1		0	0	0
20	NACHULA Racheal	0	0	0	0	0	1	0	0	0	0		0	0
14	CHILUFYA Prisca	0	1	0	0	1	0	2	0	0	1	0		0
21	WILOMBE Mary	0	2	1	1	2	3	0	0	0	2	0	0	

Top 5 Player to Player Passers		
Player	Passed To	% of Total Team Passes
ZULU Pauline	SIAMFUKO Esther	7.2%
MWEEMBA Lushomo	TEMBO Martha	5.2%
MUSOLE Ngambo	MWEEMBA Lushomo	4.6%
MUSOLE Ngambo	ZULU Pauline	4.6%

SIAMFUKO Esther	CHILUFYA Prisca	3.6%
-----------------	-----------------	------

Passing Networks

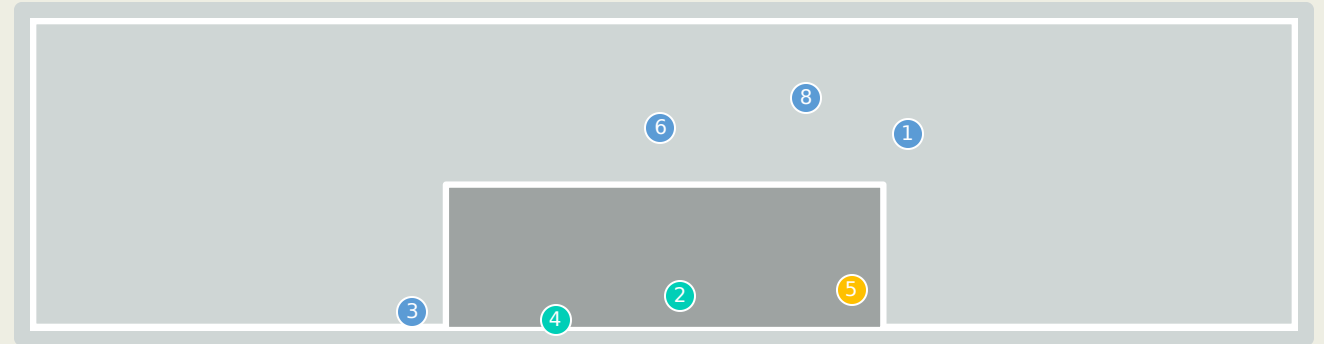
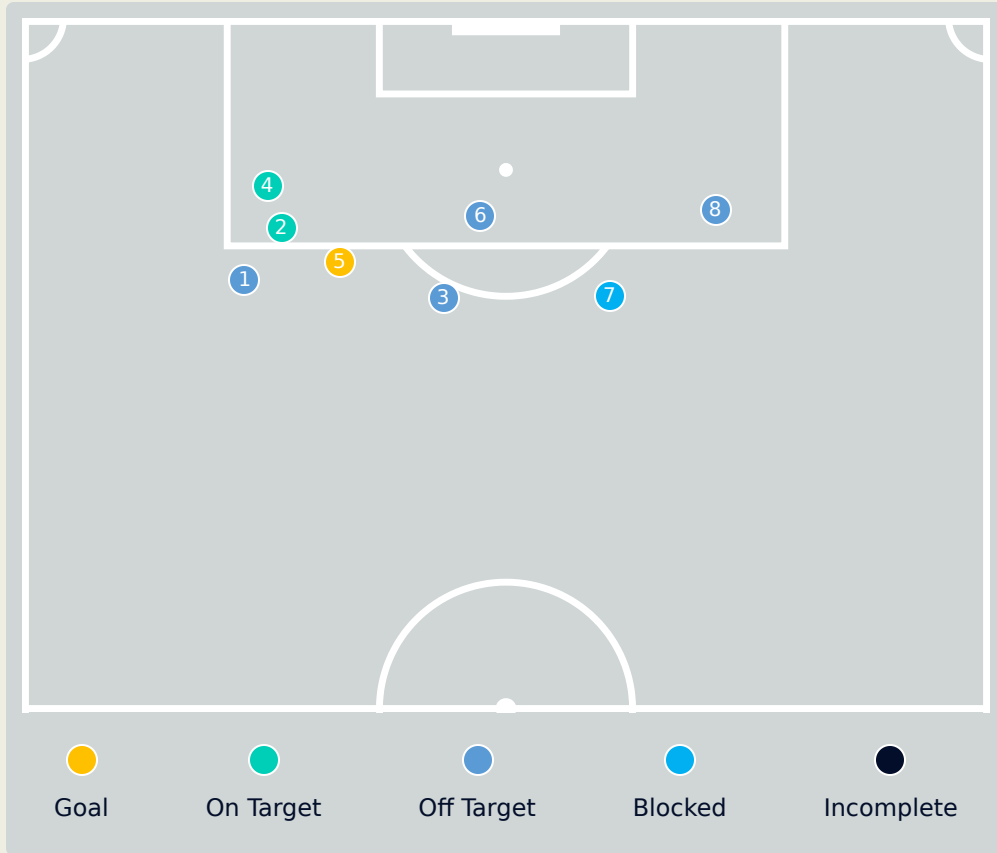
Germany

#	Passes From ↓ to →	BERGER Ann-Katrin	HENDRICH Kathrin	SCHULZE SOLANO Bibiane	MINGE Janina	SCHUELLER Lea	NUESKEN Sjoeke	POPP Alexandra	GWINN Giulia	BRAND Jule	BUEHL Klara	RAUCH Felicitas	LOHMANN Sydney	FREIGANG Laura	DOORSOUN Sara	SENSS Elisa	ENDEMANN Vivien
12	BERGER Ann-Katrin		0	14	3	1	2	0	2	1	0	2	1	0	11	0	0
3	HENDRICH Kathrin	1		7	2	1	0	0	6	0	0	0	0	0	0	0	0
4	SCHULZE SOLANO Bibiane	8	5		10	3	4	4	0	0	1	24	0	0	8	0	0
6	MINGE Janina	1	2	10		0	8	7	10	4	1	5	2	2	7	3	2
7	SCHUELLER Lea	0	0	0	2		1	0	4	4	1	0	0	0	0	0	2
9	NUESKEN Sjoeke	0	0	3	11	6		4	7	1	8	4	2	0	1	0	3
11	POPP Alexandra	1	0	2	0	2	8		2	1	5	6	0	0	1	0	2
15	GWINN Giulia	3	4	3	7	2	3	5		6	2	0	0	0	9	0	3
16	BRAND Jule	0	0	0	3	2	1	0	3		1	0	0	0	0	0	0
17	BUEHL Klara	0	0	1	1	1	4	5	2	1		11	1	0	1	1	1
19	RAUCH Felicitas	1	3	15	4	1	11	6	1	0	7		0	2	2	0	0
8	LOHMANN Sydney	0	0	0	1	0	3	0	2	0	6	2		2	0	0	3
10	FREIGANG Laura	0	0	0	0	0	0	0	0	0	2	1	2		0	0	1
13	DOORSOUN Sara	12	0	11	8	0	5	1	10	2	0	0	2	1		0	0
14	SENSS Elisa	0	0	0	1	0	0	0	1	0	0	1	0	2	0		1
18	ENDEMANN Vivien	0	0	0	1	1	2	0	4	0	0	0	4	2	0	1	

Top 5 Player to Player Passers		
Player	Passed To	% of Total Team Passes
SCHULZE SOLANO Bibiane	RAUCH Felicitas	4.6%
RAUCH Felicitas	SCHULZE SOLANO Bibiane	2.9%
BERGER Ann-Katrin	SCHULZE SOLANO Bibiane	2.7%
DOORSOUN Sara	BERGER Ann-Katrin	2.3%
BERGER Ann-Katrin	DOORSOUN Sara	2.1%

Attempts at Goal

Zambia



Key	Outcome	Shots
●	Goals	1
●	On Target	2
●	Off Target	4
●	Blocked	1
●	Incomplete	0

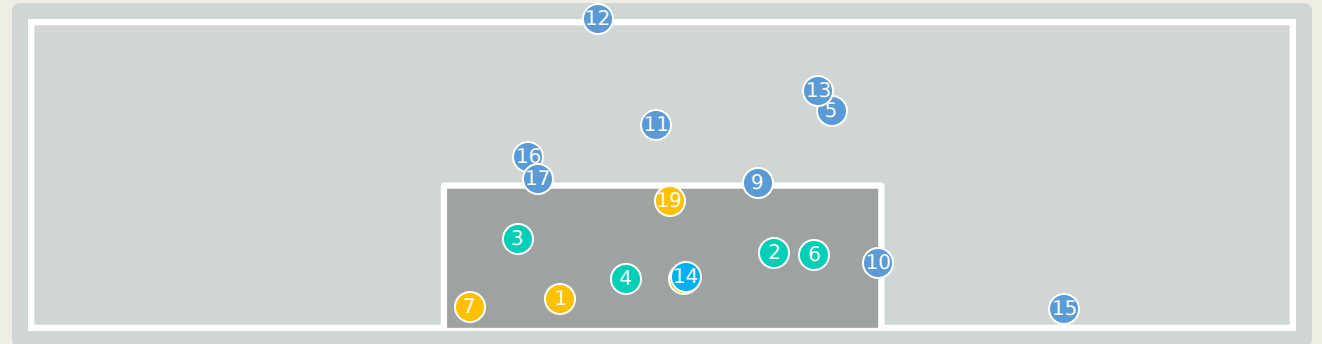
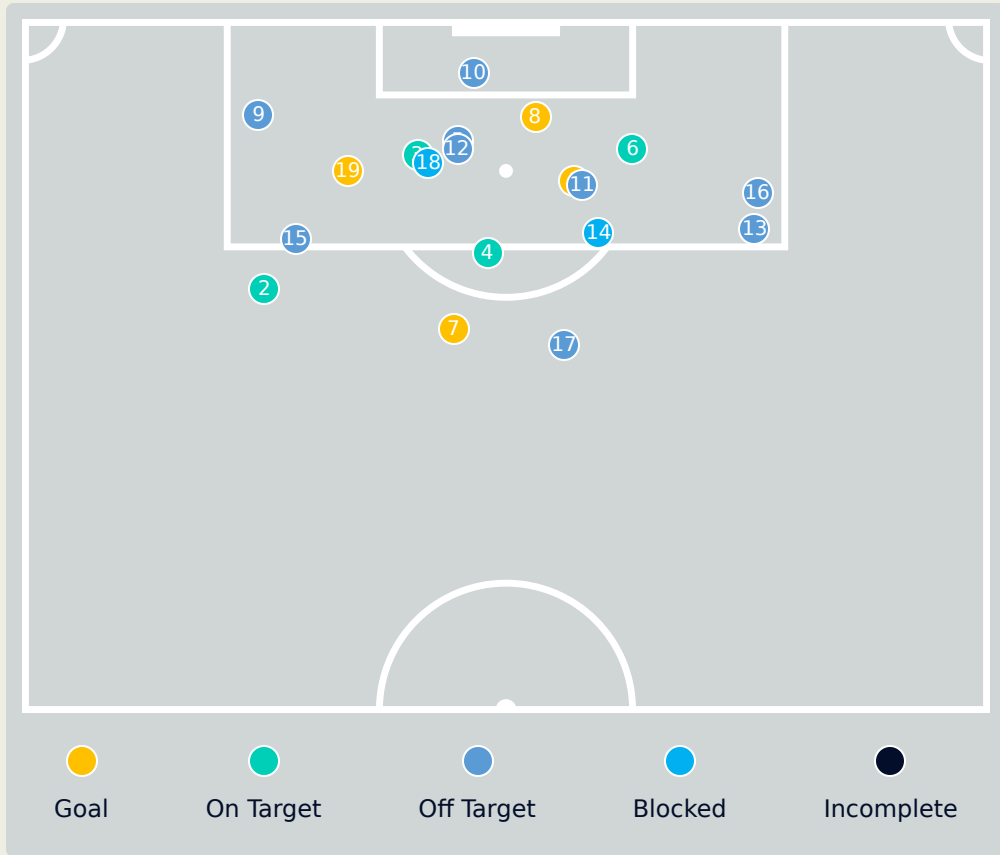
Attempts at Goal

Zambia

Time	Player	Outcome	Body Part	Delivery Type
14	11 BANDA Barbra	Off Target	Right Foot	Pass
16	11 BANDA Barbra	On Target - Saved	Left Foot	Pass
23	17 KUNDANANJI Racheal	Off Target - Saved	Right Foot	Loose Ball
29	17 KUNDANANJI Racheal	On Target - Saved	Right Foot	Pass
48	11 BANDA Barbra	On Target - Goal	Right Foot	Loose Ball
67	8 LUBANDJI Ochumba	Off Target	Left Foot	Cross
85	17 KUNDANANJI Racheal	Incomplete - Blocked	Left Foot	Pass
86	11 BANDA Barbra	Off Target	Right Foot	Pass

Germany

Attempts at Goal



Key	Outcome	Shots
●	Goals	4
●	On Target	4
●	Off Target	9
●	Blocked	2
●	Incomplete	0

Attempts at Goal

Germany

Time	Player	Outcome	Body Part	Delivery Type
9	7 SCHUELLER Lea	On Target - Goal	Right Foot	Pass
27	7 SCHUELLER Lea	On Target - Saved	Right Foot	Pass
32	7 SCHUELLER Lea	Deflected On Target - Saved	Left Foot	Ball Progression
43	16 BRAND Jule	On Target - Saved	Left Foot	Pass
46	9 NUESKEN Sjoeke	Off Target	Head	Cross
45	18 ENDEMANN Vivien	On Target - Saved	Right Foot	Pass
46	17 BUEHL Klara	On Target - Goal	Right Foot	Pass
60	7 SCHUELLER Lea	On Target - Goal	Left Foot	Cross
62	17 BUEHL Klara	Off Target	Right Foot	Loose Ball
66	7 SCHUELLER Lea	Off Target	Head	Cross
79	10 FREIGANG Laura	Off Target	Left Foot	Pass
82	10 FREIGANG Laura	Off Target	Head	Cross
83	18 ENDEMANN Vivien	Off Target	Right Foot	Pass
86	18 ENDEMANN Vivien	On Target - Blocked	Right Foot	Loose Ball
87	17 BUEHL Klara	Deflected Off Target - Defensive Event	Right Foot	Pass
88	17 BUEHL Klara	Off Target	Left Foot	Corner
90	6 MINGE Janina	Off Target	Right Foot	Loose Ball

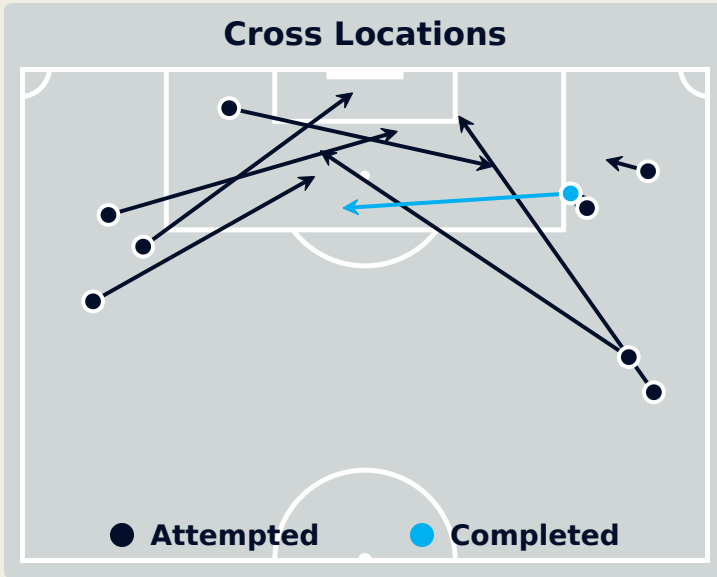
Attempts at Goal

Germany

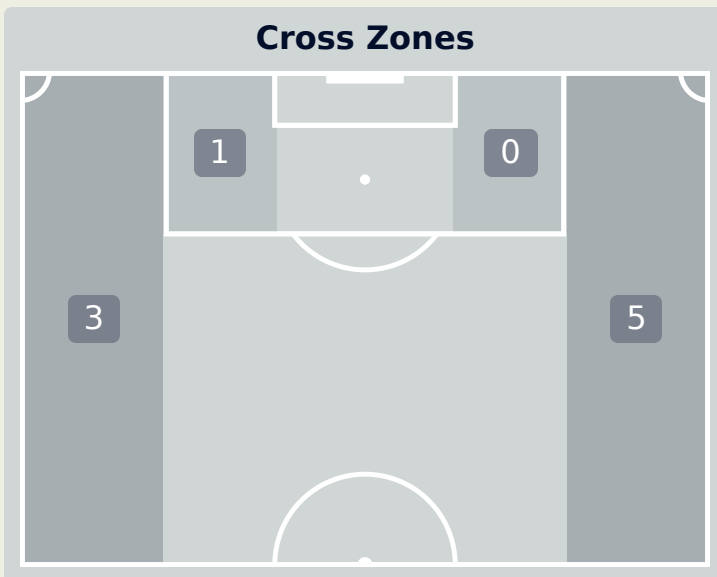
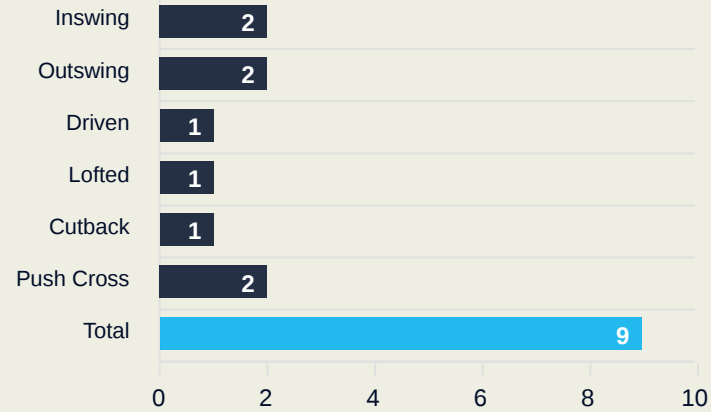
Time	Player	Outcome	Body Part	Delivery Type
94	17 BUEHL Klara	Incomplete - Blocked	Right Foot	Cross
96	14 SENSS Elisa	On Target - Goal	Right Foot	Loose Ball

Zambia

Crosses (Open Play)



Delivery Type



Attempted

9

Completed

1

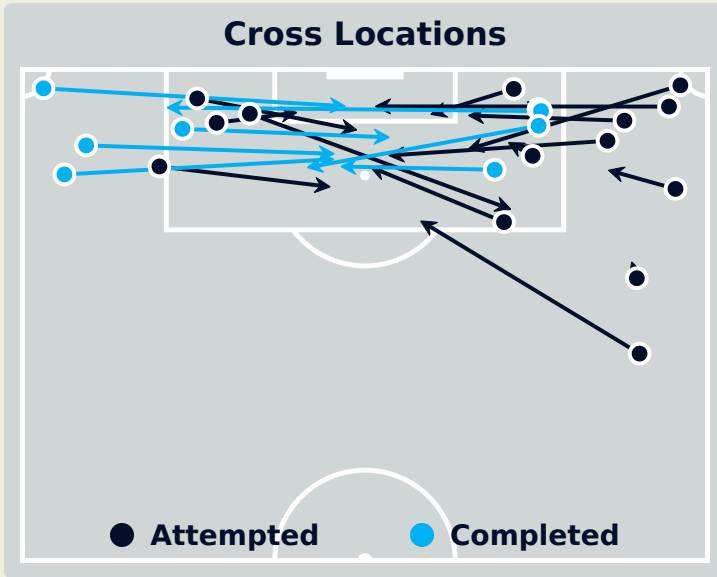
Most Crosses Attempted

3

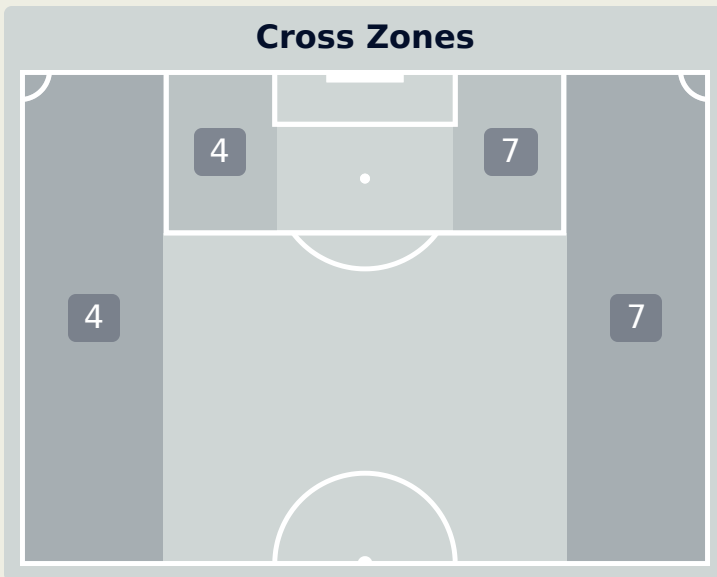
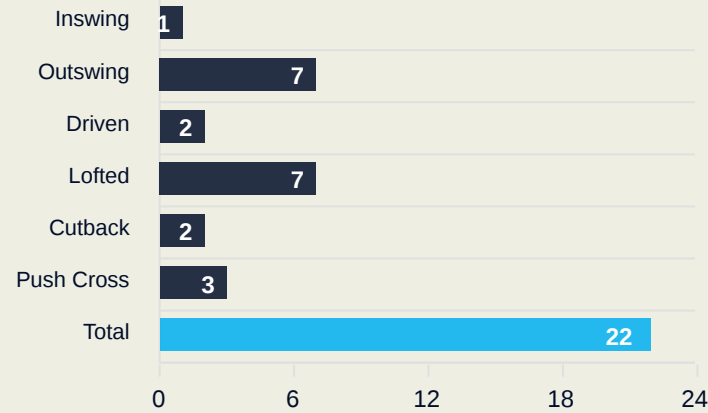
BANDA Barbra
CENTRE FORWARD

#	Player	Inswing	Outswing	Driven	Lofted	Cutback	Push Cross	Total Attempted
18	MUSOLE Ngambo	0	0	0	0	0	0	0
3	MWEEMBA Lushomo	0	0	0	0	0	0	0
4	SIAMFUKO Esther	0	1	0	0	0	0	1
5	ZULU Pauline	0	0	1	0	0	0	1
8	LUBANDJI Ochumba	0	0	0	0	0	0	0
9	MUPOPO Kabange	0	0	0	0	0	0	0
11	BANDA Barbra	1	1	0	0	1	0	3
13	TEMBO Martha	1	0	0	0	0	0	1
15	CHANDA Hellen	0	0	0	0	0	0	0
17	KUNDANANJI Racheal	0	0	0	1	0	0	1
20	NACHULA Racheal	0	0	0	0	0	1	1
14	CHILUFYA Prisca	0	0	0	0	0	1	1
21	WILOMBE Mary	0	0	0	0	0	0	0

Crosses (Open Play)



Delivery Type



Attempted

22

Completed

7

Most Crosses Attempted

7

BUEHL Klara
LEFT MIDFIELD

#	Player	Inswing	Outswing	Driven	Lofted	Cutback	Push Cross	Total Attempted
12	BERGER Ann-Katrin	0	0	0	0	0	0	0
3	HENDRICH Kathrin	0	0	0	0	0	0	0
4	SCHULZE SOLANO Bibiane	0	0	0	0	0	0	0
6	MINGE Janina	0	0	0	0	0	0	0
7	SCHUELLER Lea	0	0	2	0	0	0	2
9	NUESKEN Sjoeke	0	0	0	0	0	0	0
11	POPP Alexandra	0	0	0	0	0	0	0
15	GWINN Giulia	0	1	0	5	0	1	7
16	BRAND Jule	0	1	0	0	0	0	1
17	BUEHL Klara	1	4	0	0	1	1	7
19	RAUCH Felicitas	0	1	0	0	0	0	1
8	LOHMANN Sydney	0	0	0	0	1	0	1
10	FREIGANG Laura	0	0	0	0	0	0	0
13	DOORSOUN Sara	0	0	0	0	0	0	0
14	SENSS Elisa	0	0	0	0	0	0	0
18	ENDEMANN Vivien	0	0	0	2	0	1	3

Zambia

Offering to Receive

159

Total Offers Made

56

Total Offers Received

Most Offers

35

BANDA Barbra
CENTRE FORWARD

65

Offers Made in Final Third

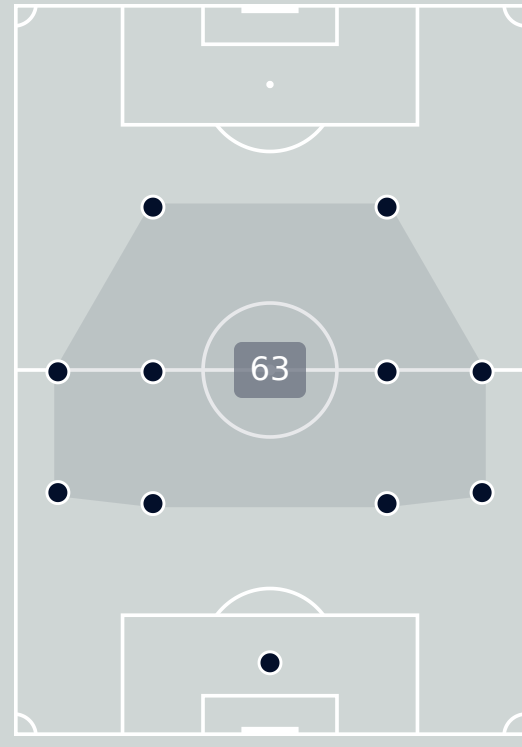
70

Offers Made in Middle Third

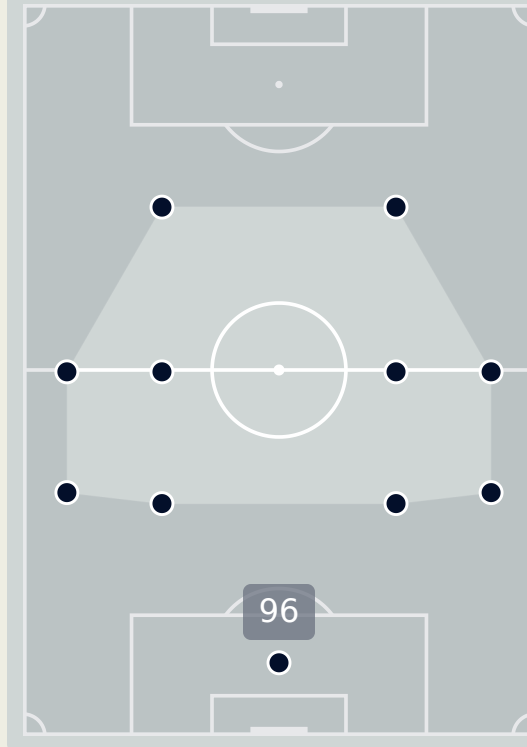
24

Offers Made in Defensive Third

Offers Made Inside Shape



Offers Made Outside Shape



#	Player	Offers Made	Offers Received	% Made & Received
18	MUSOLE Ngambo	0	0	0%
3	MWEEMBA Lushomo	2	1	50%
4	SIAMFUKO Esther	9	6	66.7%
5	ZULU Pauline	6	1	16.7%
8	LUBANDJI Ochumba	4	1	25%
9	MUPOPO Kabange	22	8	36.4%
11	BANDA Barbra	35	10	28.6%
13	TEMBO Martha	2	1	50%
15	CHANDA Hellen	9	7	77.8%
17	KUNDANANJI Racheal	24	8	33.3%
20	NACHULA Racheal	12	1	8.3%
14	CHILUFYA Prisca	30	10	33.3%
21	WILOMBE Mary	4	2	50%

Germany

Offering to Receive

336

Total Offers Made

155

Total Offers Received

Most Offers

79

NUESKEN Sjoeke
RIGHT CENTRE MIDFIELD

118

Offers Made in Final Third

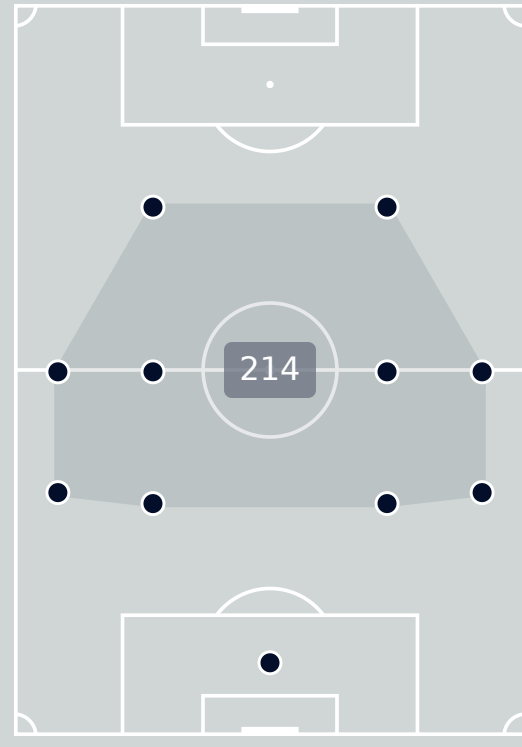
184

Offers Made in Middle Third

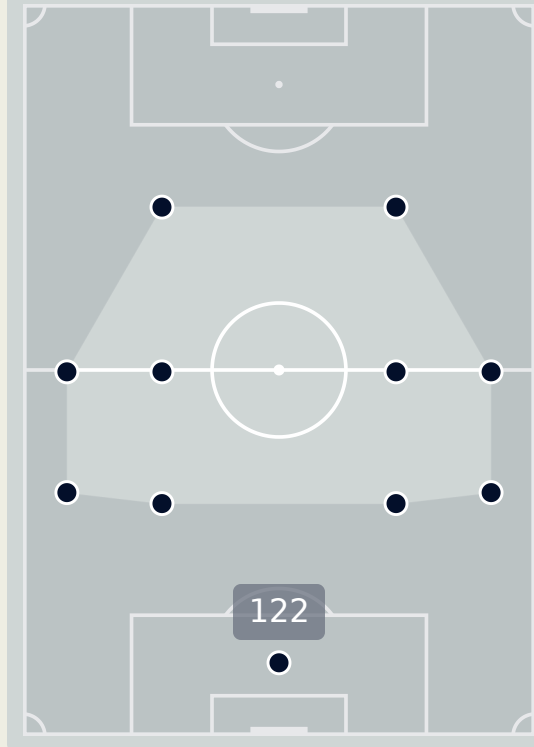
34

Offers Made in Defensive Third

Offers Made Inside Shape



Offers Made Outside Shape

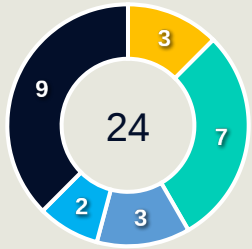


#	Player	Offers Made	Offers Received	% Made & Received
12	BERGER Ann-Katrin	0	0	0%
3	HENDRICH Kathrin	1	1	100%
4	SCHULZE SOLANO Bibiane	12	6	50%
6	MINGE Janina	49	32	65.3%
7	SCHUELLER Lea	26	8	30.8%
9	NUESKEN Sjoeke	79	36	45.6%
11	POPP Alexandra	22	17	77.3%
15	GWINN Giulia	28	19	67.9%
16	BRAND Jule	13	4	30.8%
17	BUEHL Klara	32	6	18.8%
19	RAUCH Felicitas	15	7	46.7%
8	LOHMANN Sydney	14	6	42.9%
10	FREIGANG Laura	21	5	23.8%
13	DOORSOUN Sara	5	2	40%
14	SENSS Elisa	14	4	28.6%
18	ENDEMANN Vivien	5	2	40%

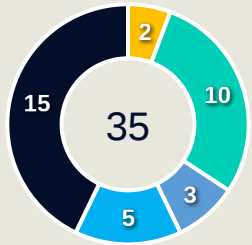
Movement to Receive

Movement Types by Phase

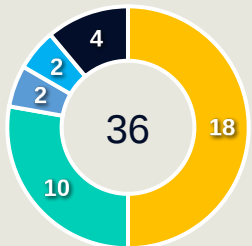
Final Third Phase



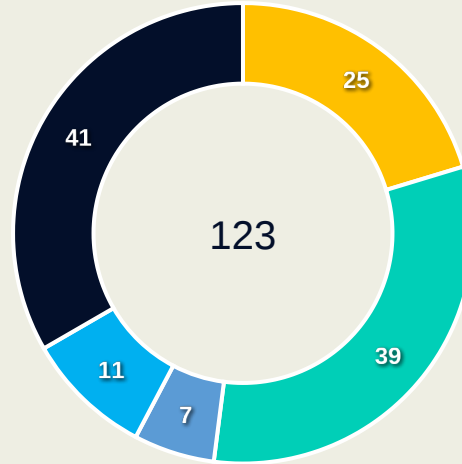
Progression Phase



Build Up Phase



All Movement Types

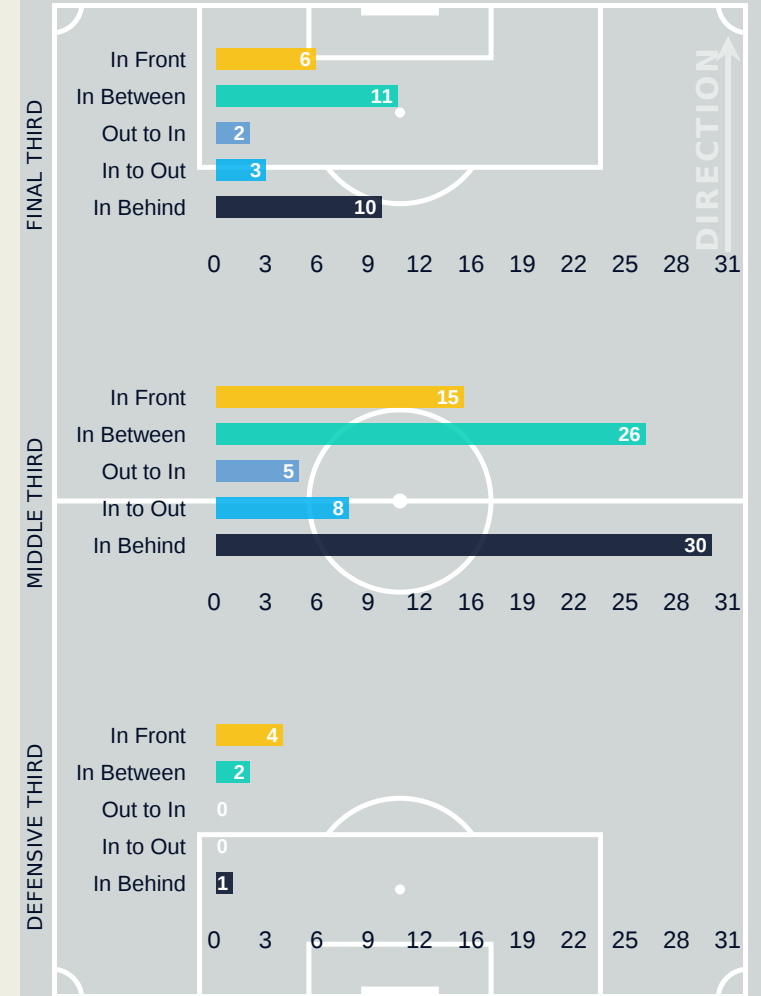


- In Front
- In Between
- Out to In
- In to Out
- In Behind

Top Ranked Players

Type	Player	Movements
In Front	4 SIAMFUKO Esther	6
In Between	17 KUNDANANJI Racheal	11
Out to In	9 MUPOPO Kabange	2
In to Out	14 CHILUFYA Prisca	5
In Behind	11 BANDA Barbra	21

Movement Types Pitch Third

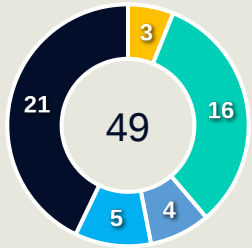


Germany

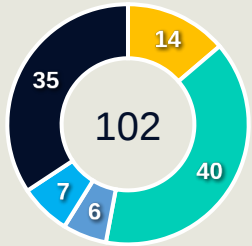
Movement to Receive

Movement Types by Phase

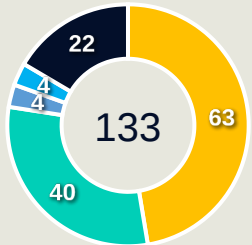
Final Third Phase



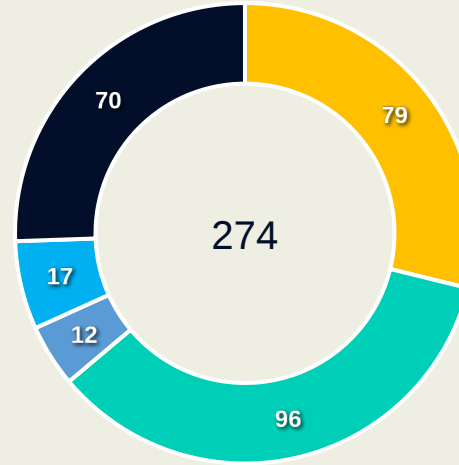
Progression Phase



Build Up Phase



All Movement Types

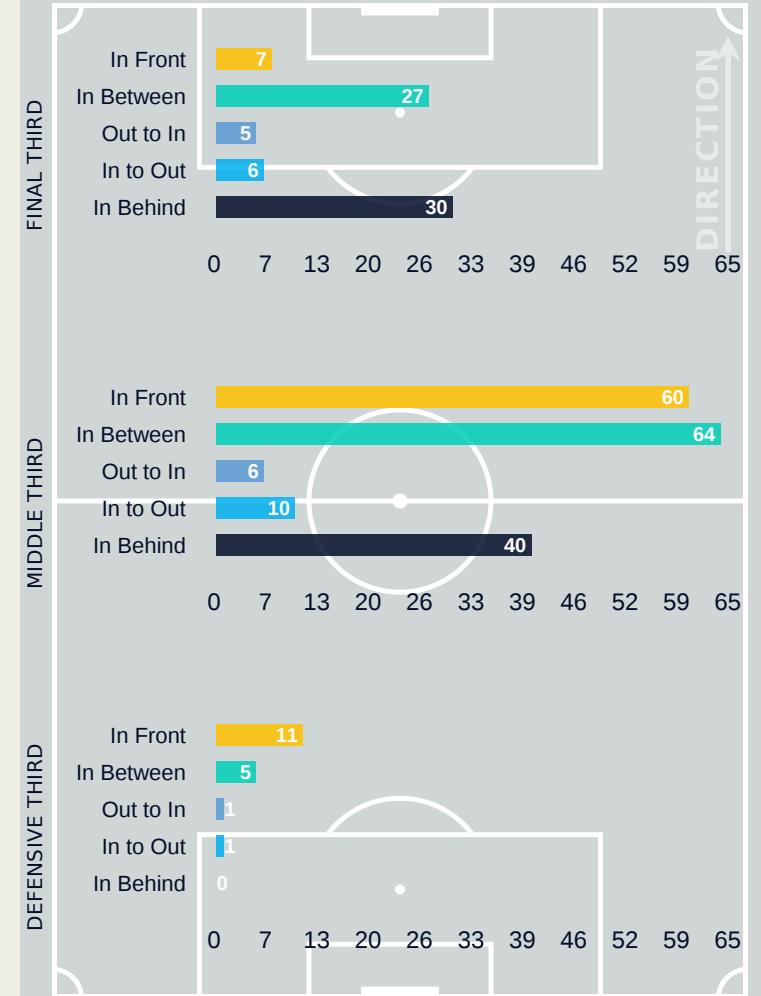


- In Front
- In Between
- Out to In
- In to Out
- In Behind

Top Ranked Players

Type	Player	Movements
In Front	6 MINGE Janina	32
In Between	9 NUESKEN Sjoeke	34
Out to In	9 NUESKEN Sjoeke	3
In to Out	9 NUESKEN Sjoeke	7
In Behind	9 NUESKEN Sjoeke	14

Movement Types Pitch Third



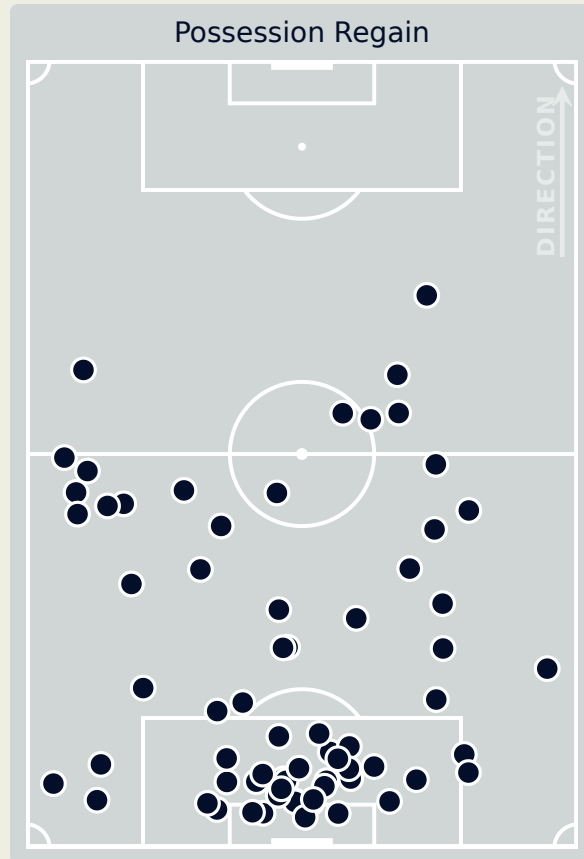
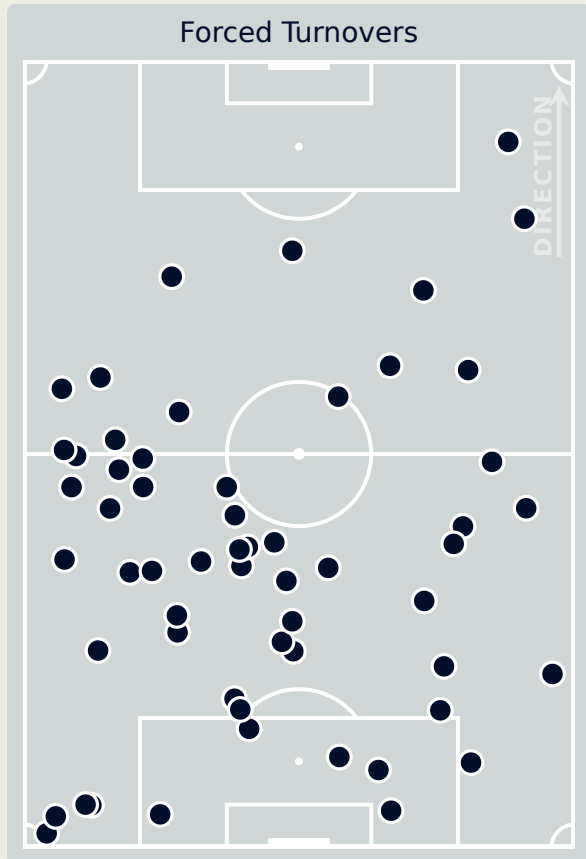
FIFA[®]
W-OFT 2024

OUT OF POSSESSION

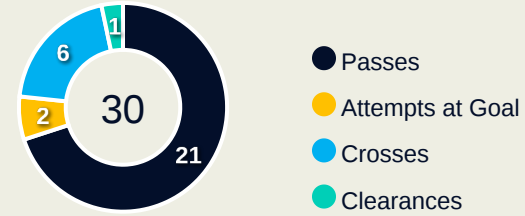
Zambia 1 - 4 Germany

Zambia

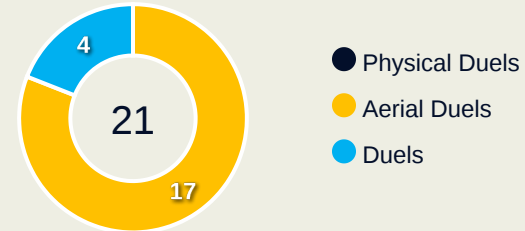
Defensive Actions



Blocks



Possession Contests



Most Possession Regains

17
MUSOLE Ngambo
 GOALKEEPER

#	Player	Total Possession Regains
18	MUSOLE Ngambo	17
3	MWEEMBA Lushomo	4
4	SIAMFUKO Esther	4
5	ZULU Pauline	13
8	LUBANDJI Ochumba	5
9	MUPOPO Kabange	3
11	BANDA Barbra	1
13	TEMBO Martha	6
15	CHANDA Hellen	6
17	KUNDANANJI Racheal	2
20	NACHULA Racheal	1
14	CHILUFYA Prisca	1
21	WILOMBE Mary	2

Germany

Defensive Actions

64

Forced Turnovers

63

Possession Regained

7

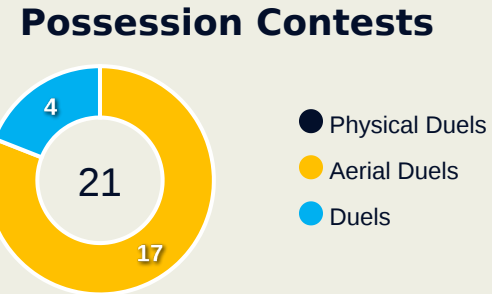
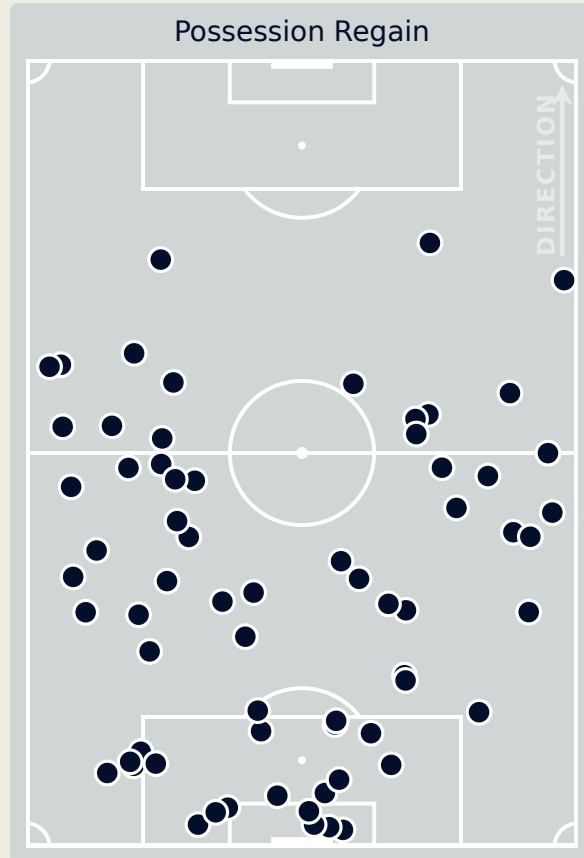
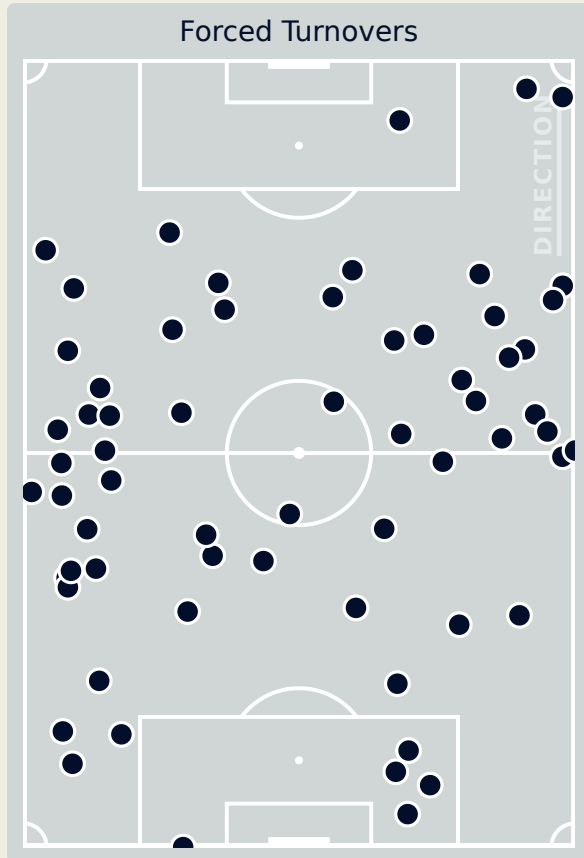
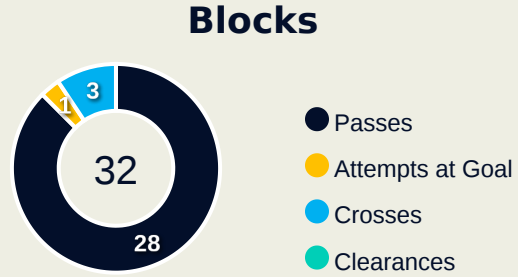
Interceptions

22

Tackles

5.86

Possession Actions / Defensive Action



Most Possession Regains

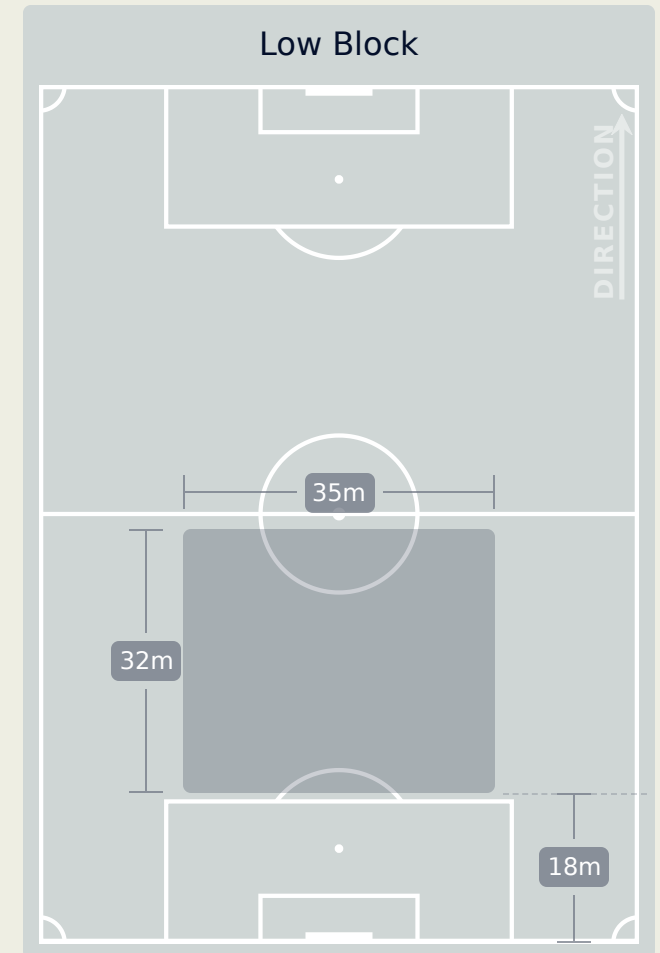
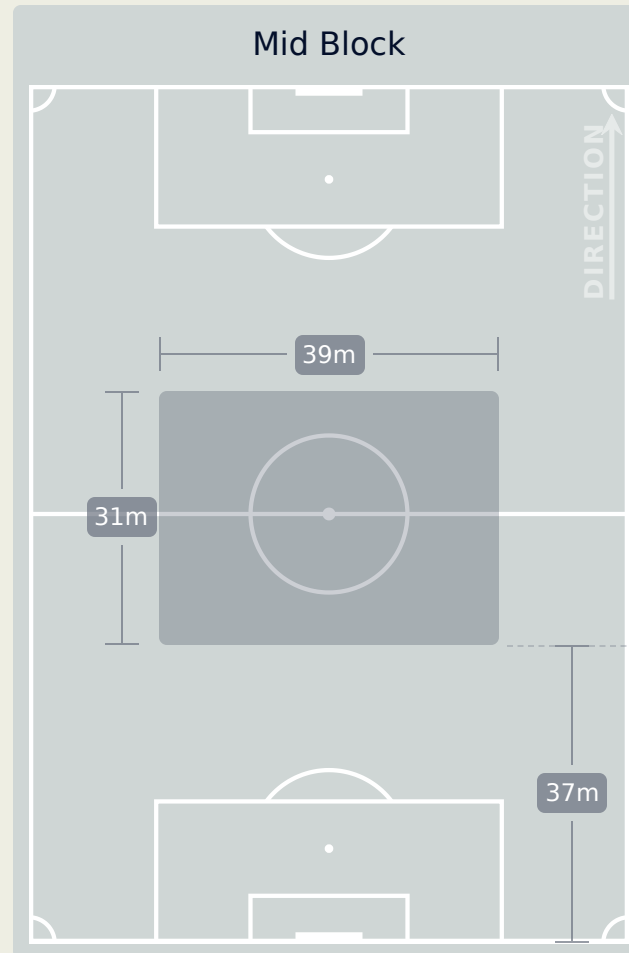
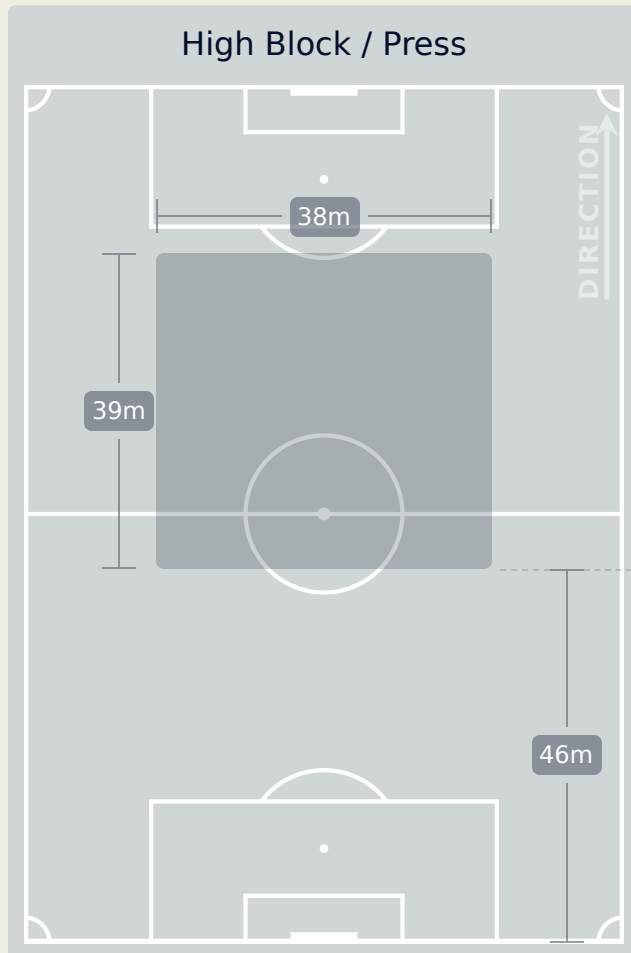
13

BERGER Ann-Katrin
GOALKEEPER

#	Player	Total Possession Regains
12	BERGER Ann-Katrin	13
3	HENDRICH Kathrin	1
4	SCHULZE SOLANO Bibiane	8
6	MINGE Janina	12
7	SCHUELLER Lea	0
9	NUESKEN Sjoeke	3
11	POPP Alexandra	2
15	GWINN Giulia	6
16	BRAND Jule	1
17	BUEHL Klara	2
19	RAUCH Felicitas	10
8	LOHMANN Sydney	0
10	FREIGANG Laura	0
13	DOORSOUN Sara	4
14	SENSS Elisa	0
18	ENDEMANN Vivien	1

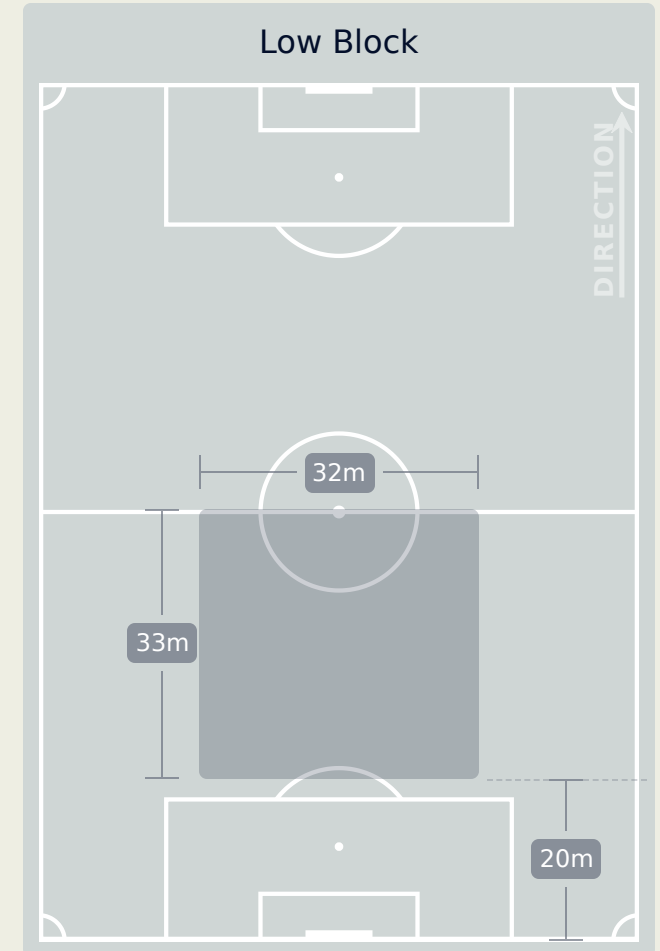
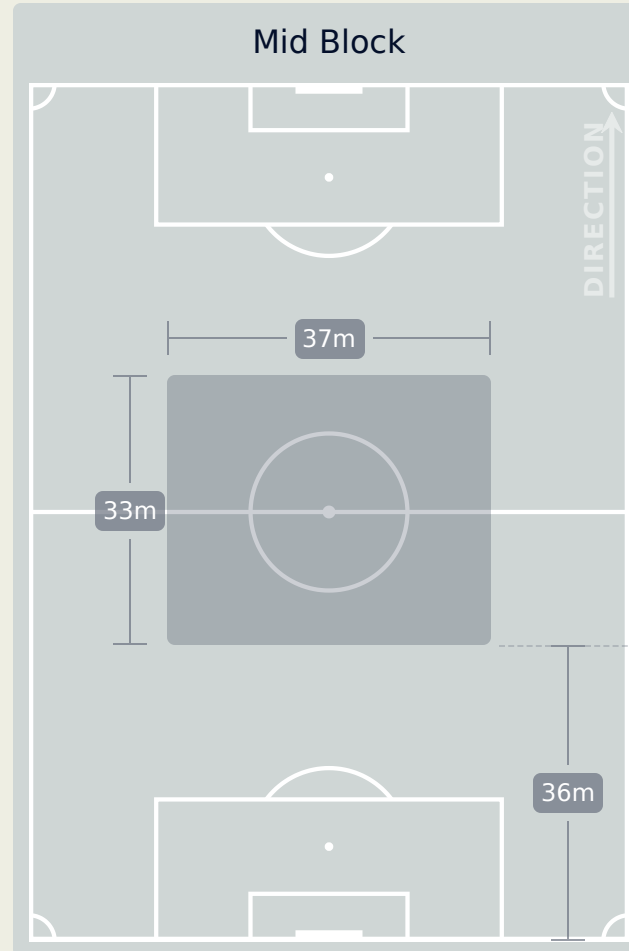
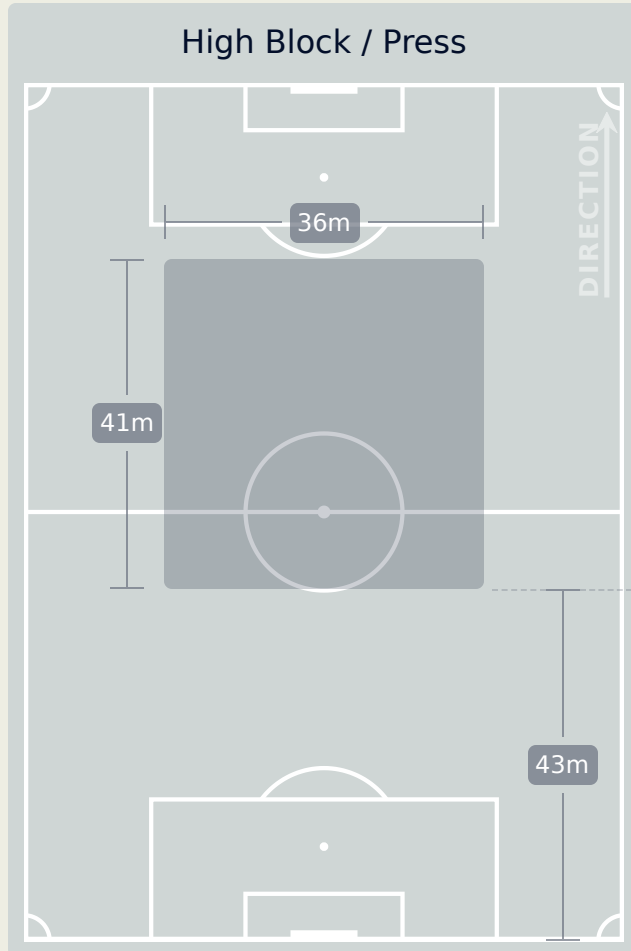
Defensive Line Height & Team Length

Zambia



Defensive Line Height & Team Length

Germany



Defensive Pressure

Zambia



Germany



226	Total Pressures	127
41	Direct Pressures	40
1.52s	Avg Pressure Duration	1.66s
57	Forced Turnovers	64
12s	Ball Recovery Time	7.92s
69	Pushing on into Pressing	25
215	Pushing on	69
37	Pressing Direction Inside	14
141	Pressing Direction Outside	77

Most Direct Pressures

9

CHANDA Hellen
RIGHT CENTRE MIDFIELD

Most Direct Pressures

10

NUESKEN Sjoeke
RIGHT CENTRE MIDFIELD

FIFA[®]
W-OFT 2024

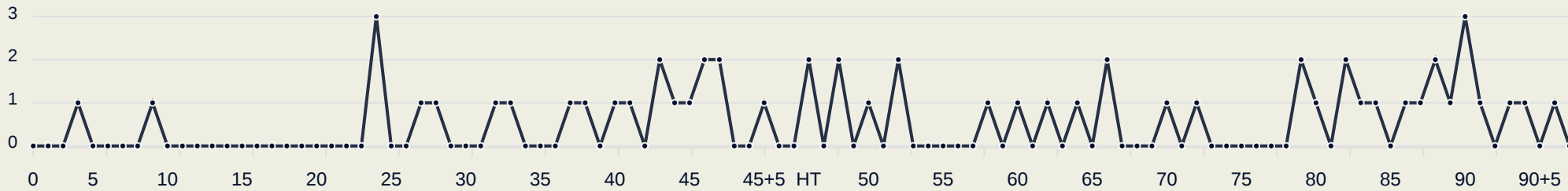
GOALKEEPING

Zambia 1 - 4 Germany

Goalkeeping Involvement

Zambia

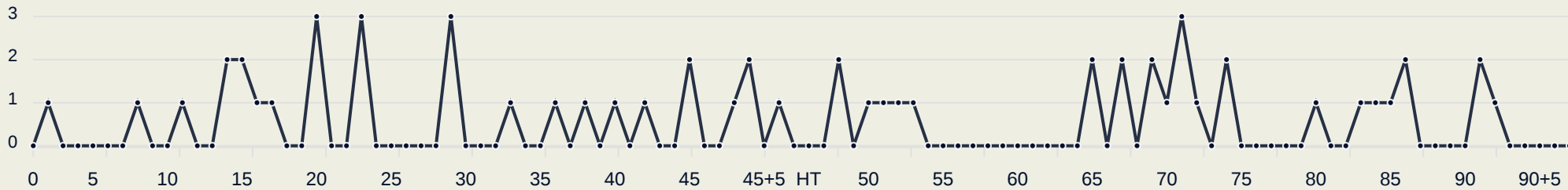
Zambia GK Involvement Timeline



59
Total Involvements

Germany

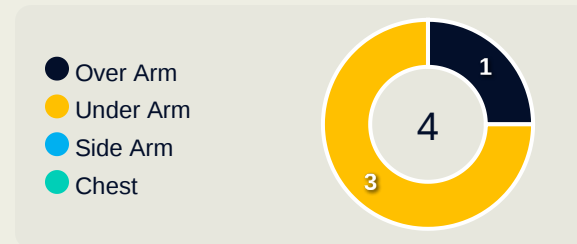
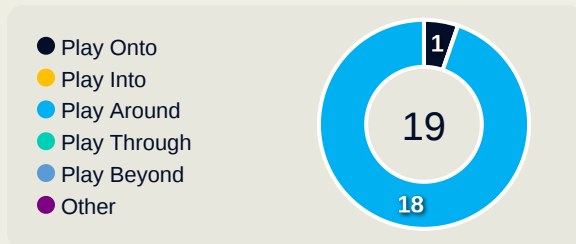
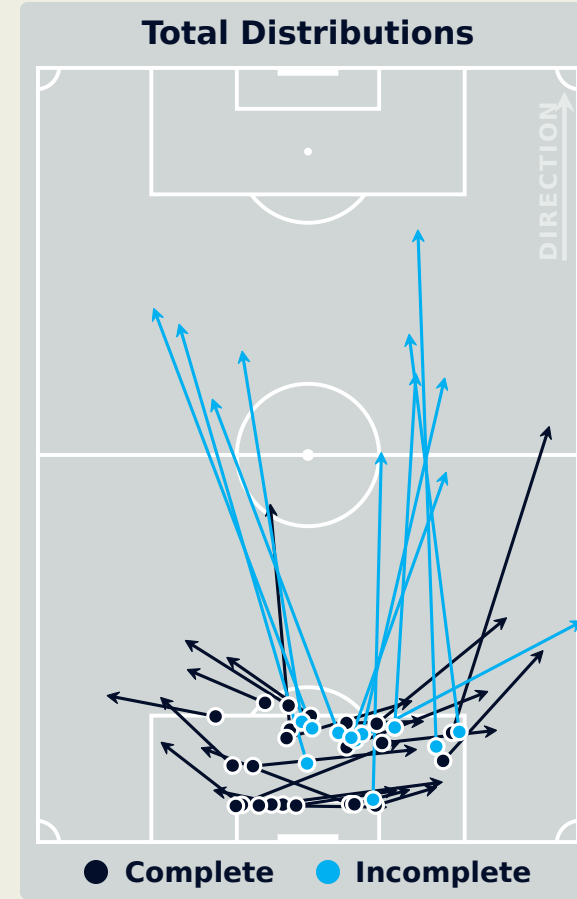
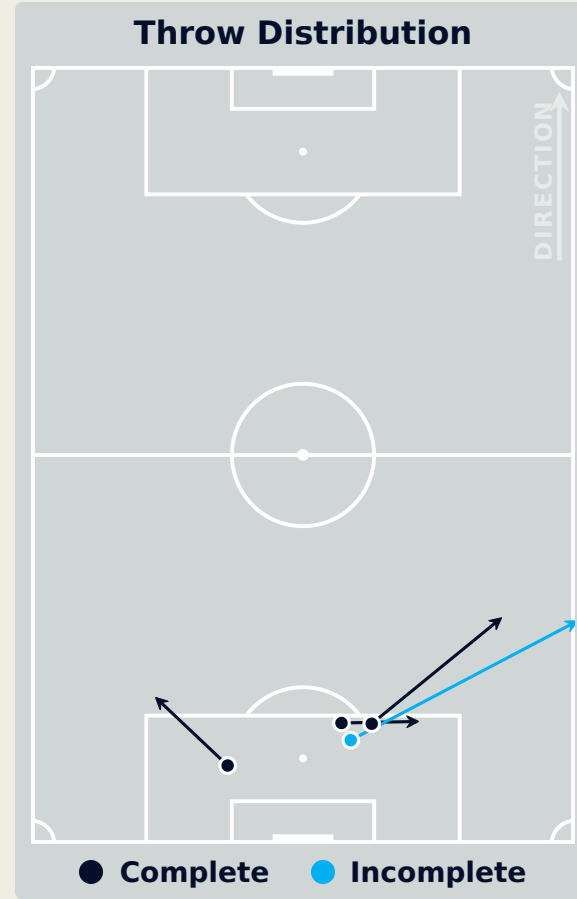
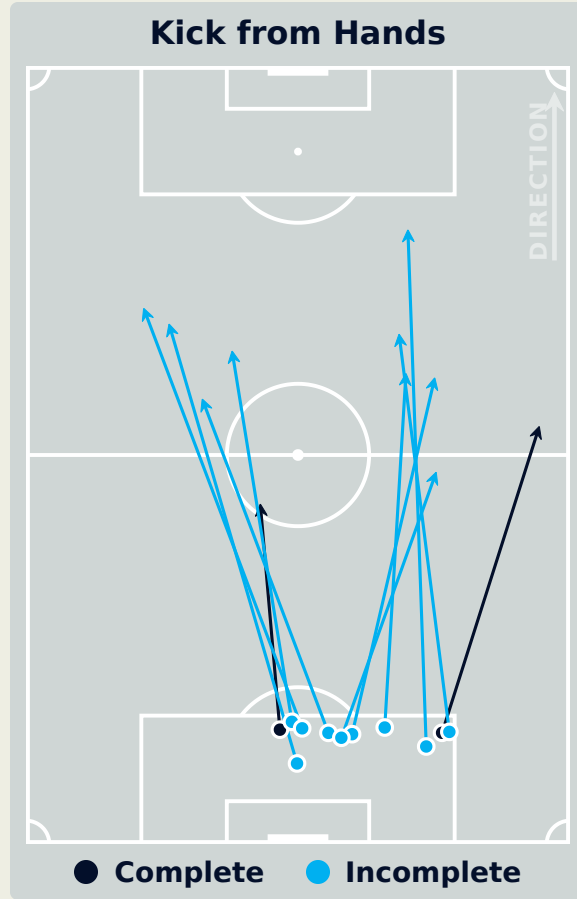
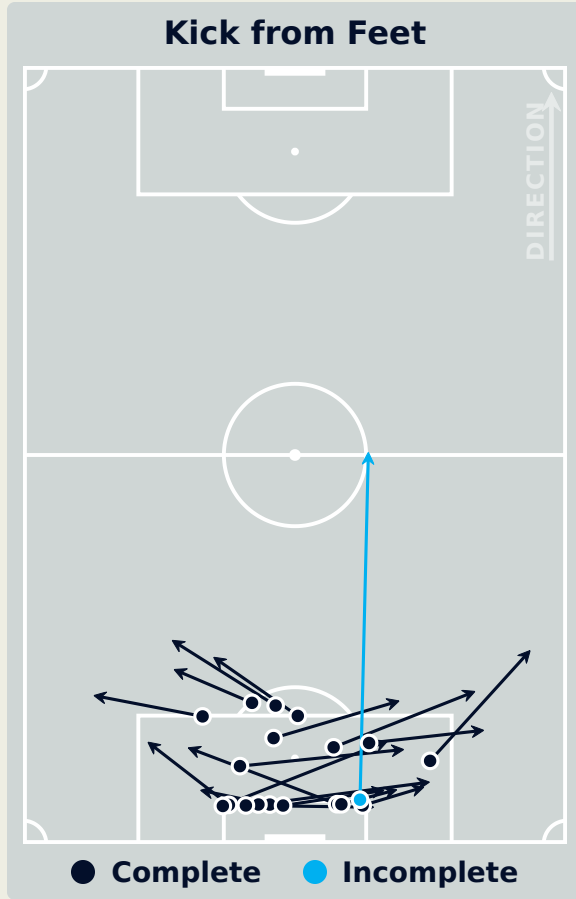
Germany GK Involvement Timeline



57
Total Involvements

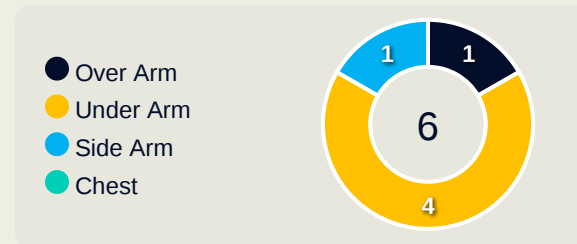
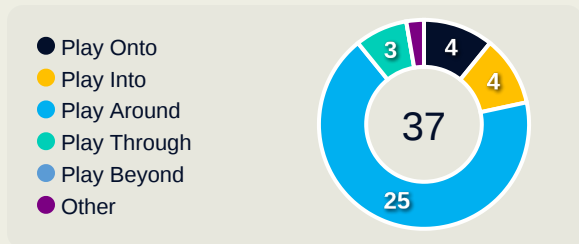
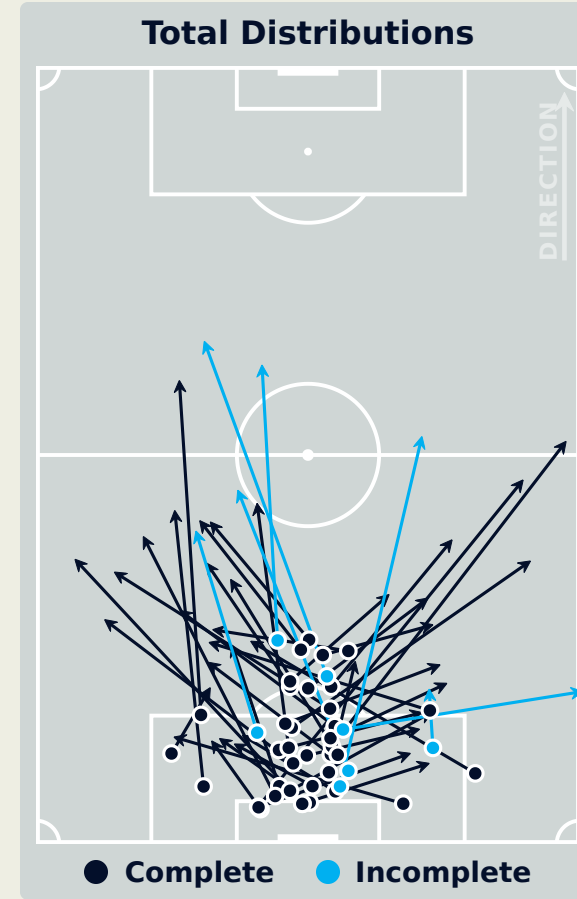
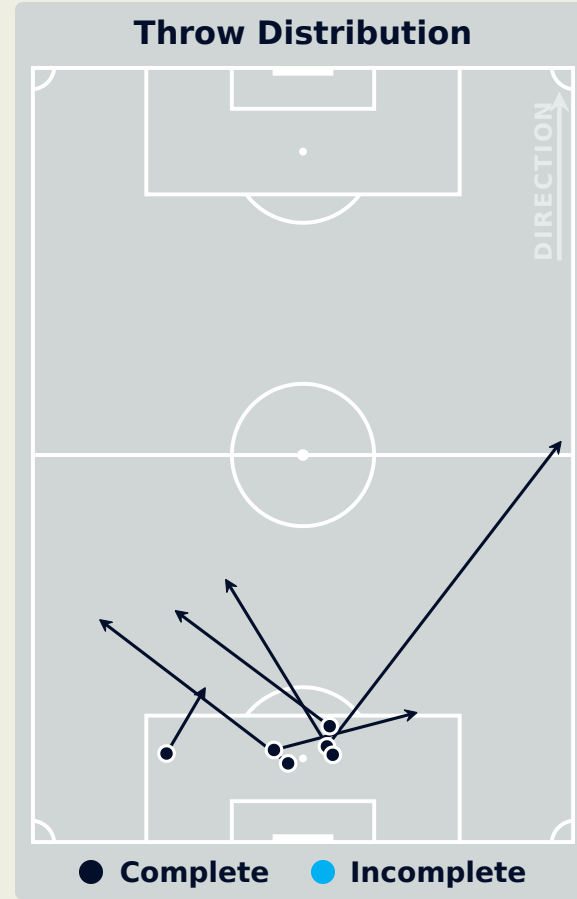
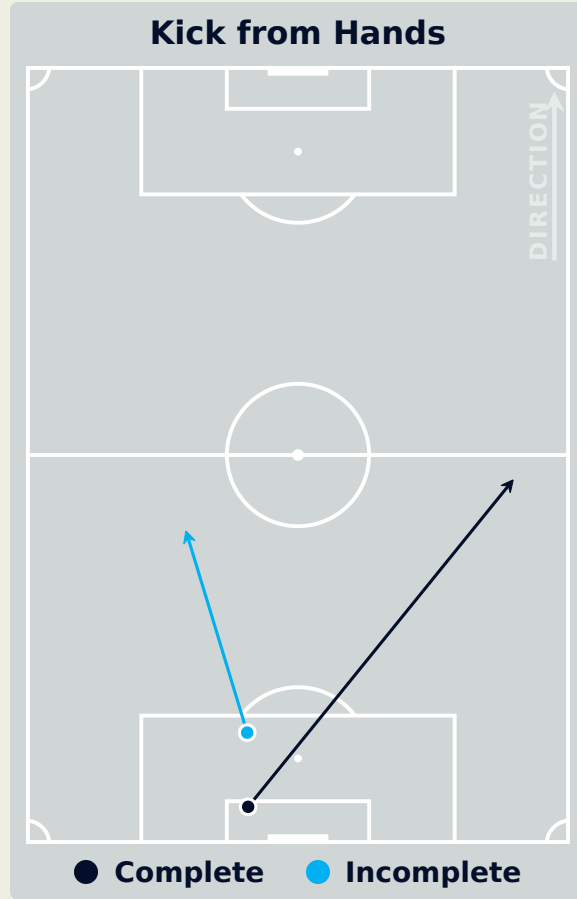
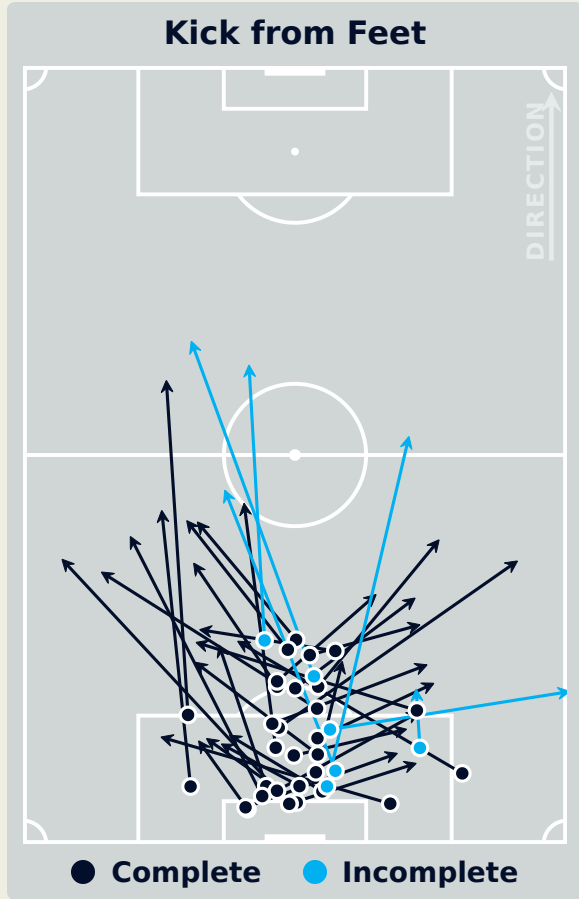
Zambia

Goalkeeping Distribution



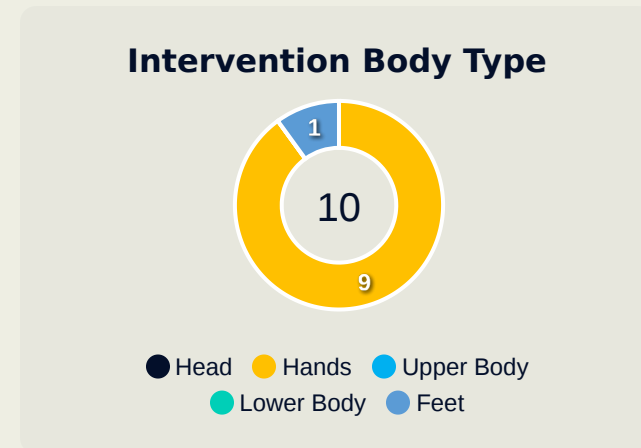
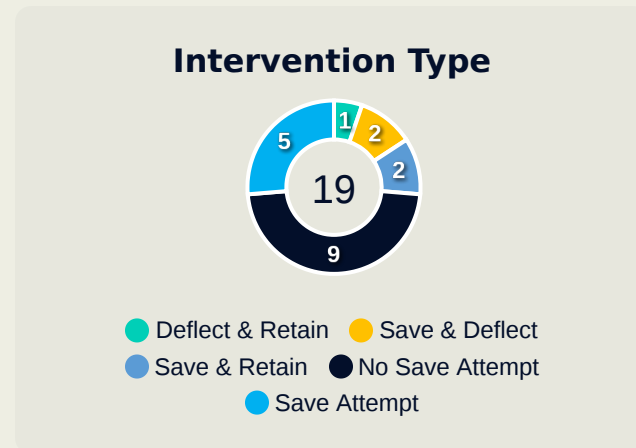
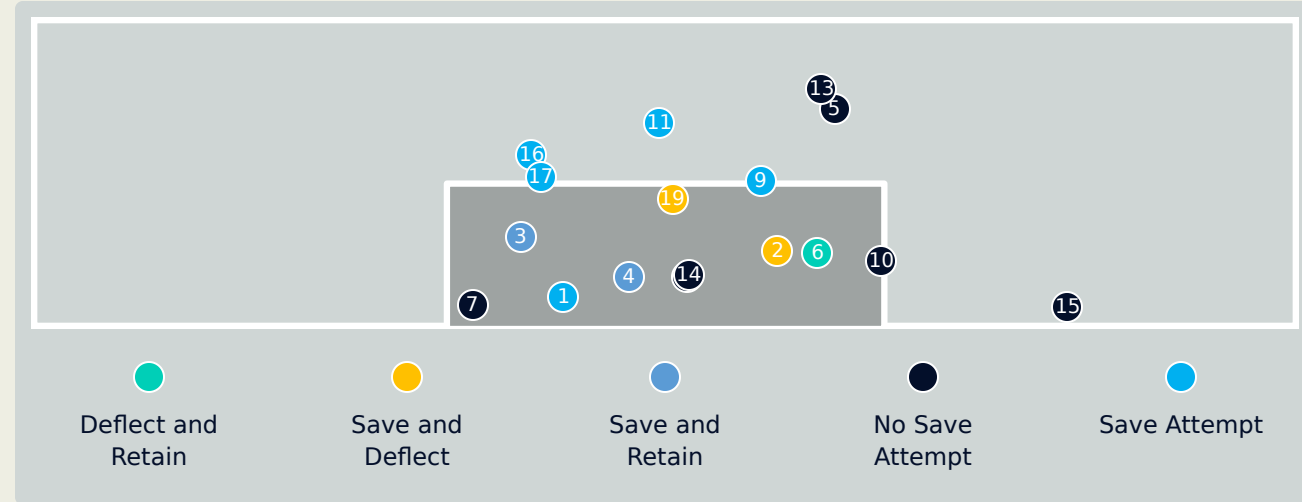
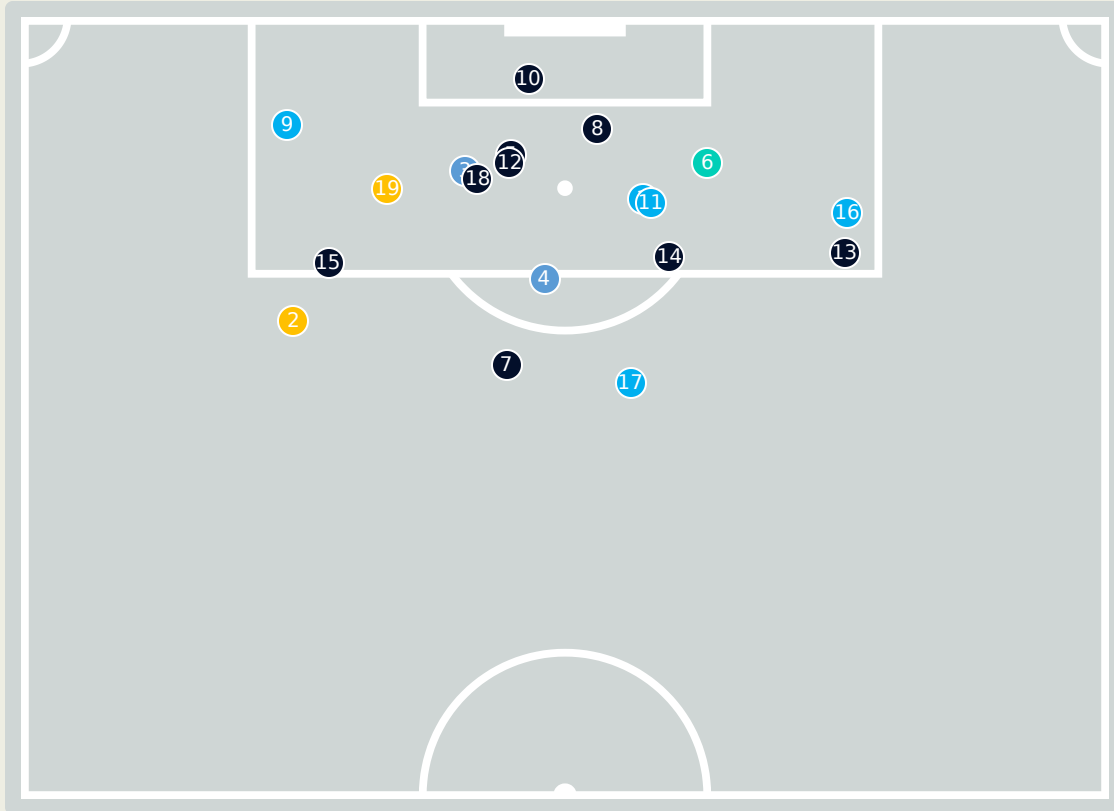
Goalkeeping Distribution

Germany



Zambia

Goal Prevention



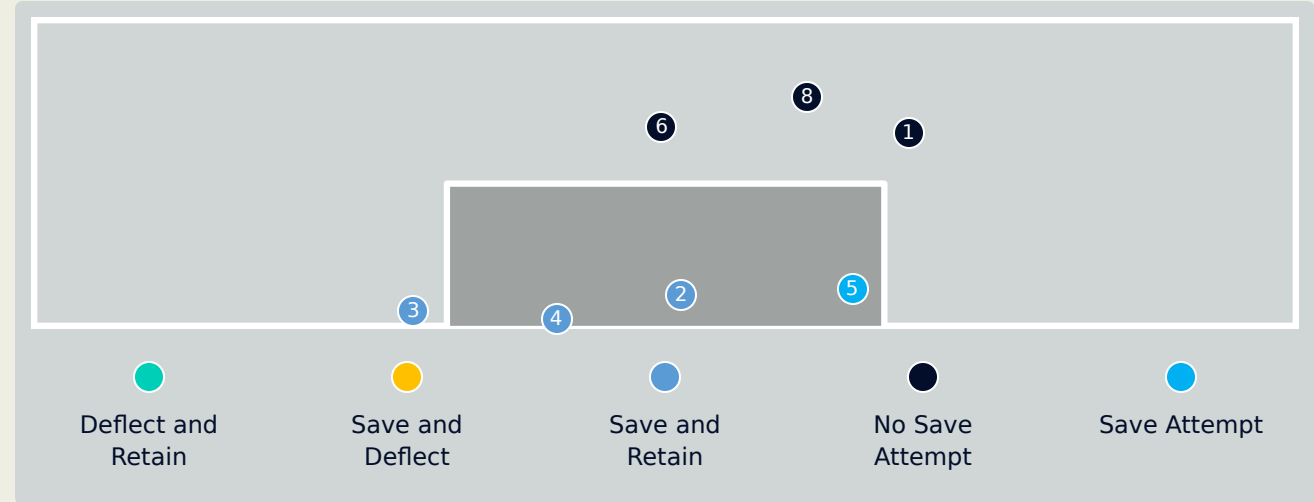
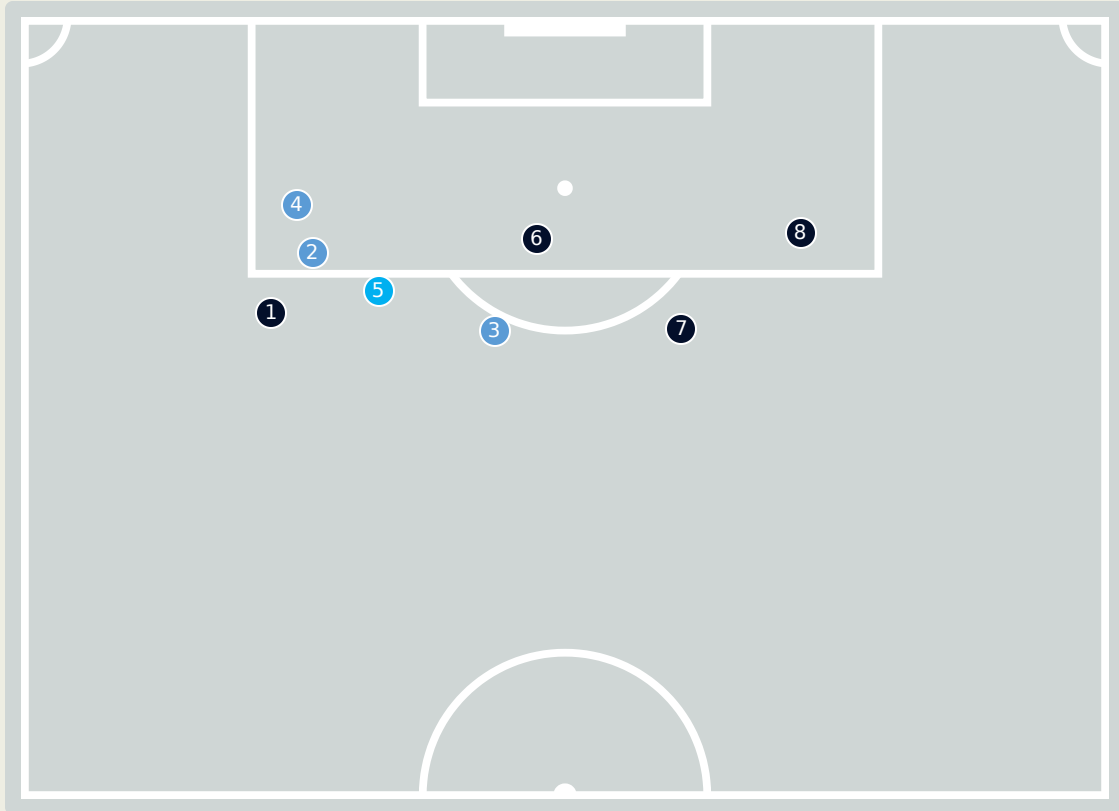
19
Total Attempts on Goal Faced

50
Save %

Total Attempts on Goal Faced	Total Goal Interventions	Save & Retain	Deflect & Retain	Save & Deflect	Save Attempt	No Save Attempt
19	4	2	0	2	5	9

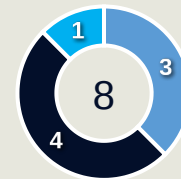
Germany

Goal Prevention



- Deflect and Retain
- Save and Deflect
- Save and Retain
- No Save Attempt
- Save Attempt

Intervention Type



- Deflect & Retain
- Save & Deflect
- Save & Retain
- No Save Attempt
- Save Attempt

Intervention Body Type



- Head
- Hands
- Upper Body
- Lower Body
- Feet

8

Total Attempts on Goal Faced

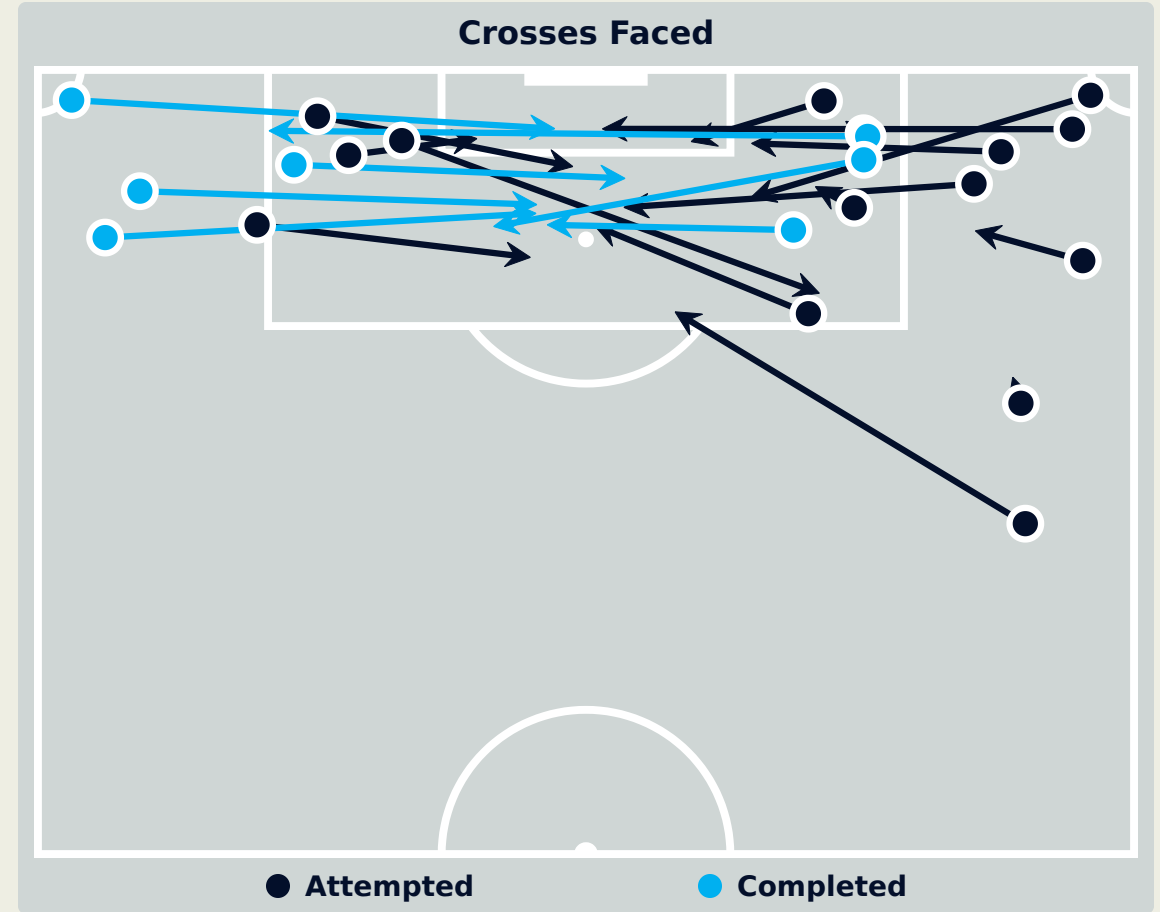
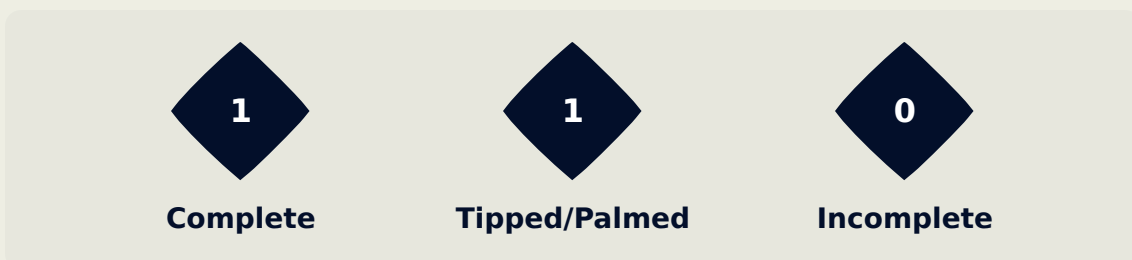
67

Save %

Total Attempts on Goal Faced	Total Goal Interventions	Save & Retain	Deflect & Retain	Save & Deflect	Save Attempt	No Save Attempt
8	3	3	0	0	1	4

Zambia

Aerial Control

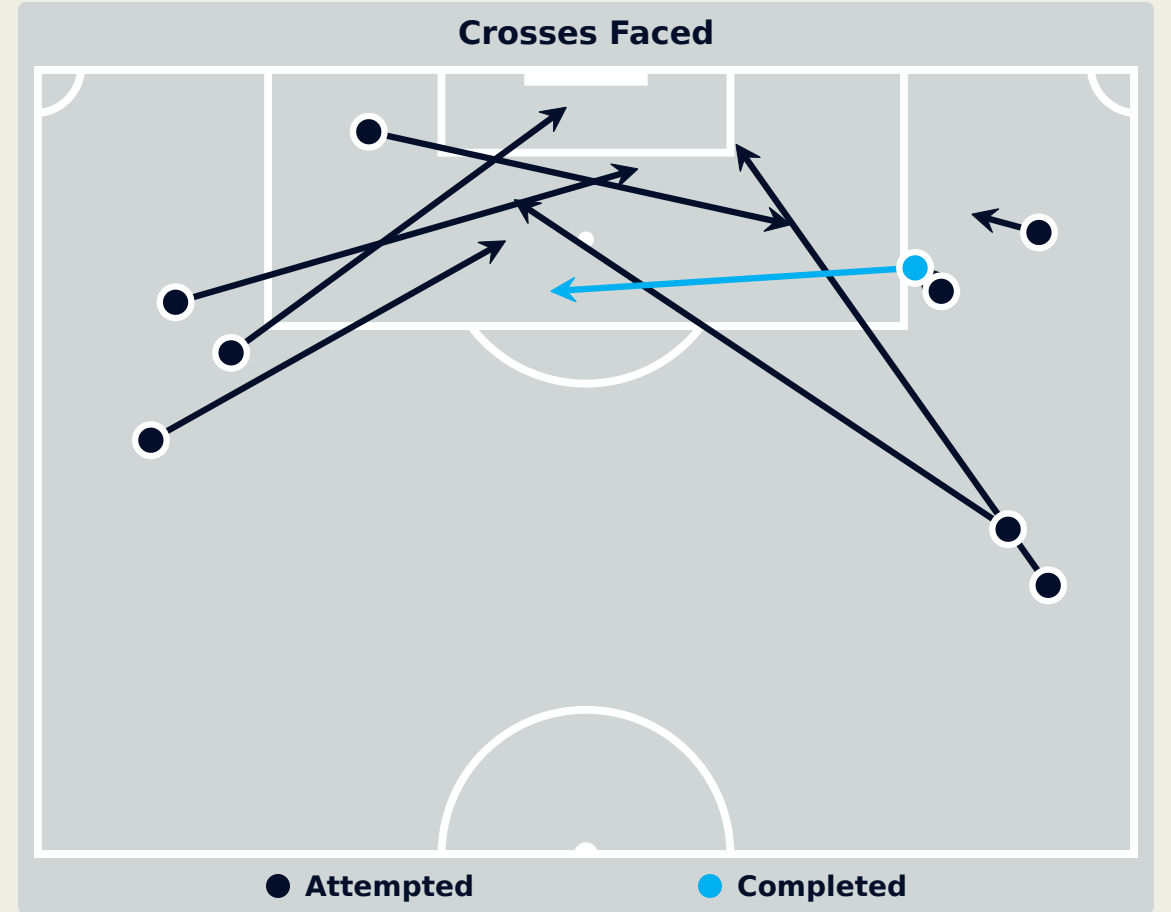
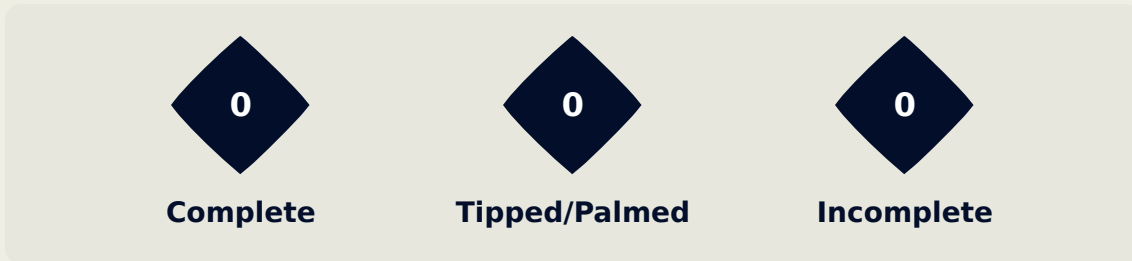
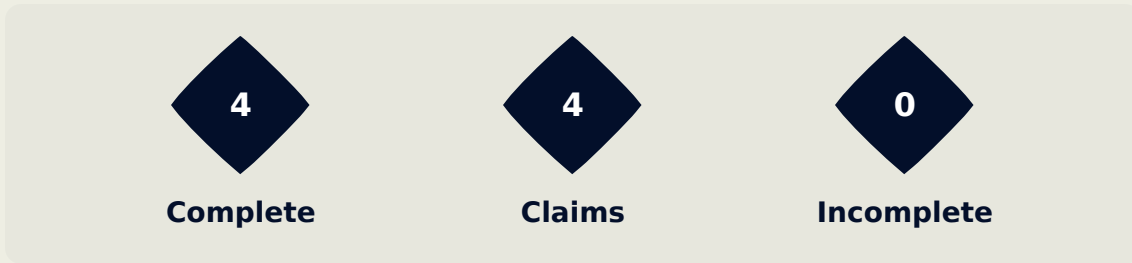


Delivery Types Faced

Total	In Swing	Out Swing	Driven	Lofted	Cutback	Push
23	1	8	2	7	2	3

Germany

Aerial Control



Delivery Types Faced

Total	In Swing	Out Swing	Driven	Lofted	Cutback	Push
10	3	2	1	1	1	2

FIFA[®]
W-OFT 2024

SET PLAYS

Zambia 1 - **4 Germany**

Zambia

Set Plays

45

Total Set Plays

11

Total Free Kicks

0

Total Penalties

0

Total Corners

34

Total Throw Ins

Free Kicks

Type	Total
Direct	6
Direct (on target)	0
Direct (off target)	0
Indirect	5

Corners

Delivery Type	From Left Side	From Right Side	Total
Direct to Area	0	0	0
Short	0	0	0
Edge of Penalty Area	0	0	0

Corners

Delivery Style	Total
Inswing	0
Outswing	0
Driven	0

Germany

Set Plays

41

Total Set Plays

6

Total Free Kicks

0

Total Penalties

3

Total Corners

32

Total Throw Ins

Free Kicks

Type	Total
Direct	5
Direct (on target)	0
Direct (off target)	0
Indirect	1

Corners

Delivery Type	From Left Side	From Right Side	Total
Direct to Area	0	1	1
Short	1	1	2
Edge of Penalty Area	0	0	0

Corners

Delivery Style	Total
Inswing	0
Outswing	1
Driven	0

FIFA[®]
W-OFT 2024

INDIVIDUAL DATA IN POSSESSION

Zambia 1 - 4 Germany

In Possession - Distributions

Zambia

#	Player	Passes Attempted	Passes Completed	Pass Completion %	Switches of Play	Crosses Attempted	Crosses Completed	Line Breaks Attempted	Line Breaks Completed	Line Break Completion %	Ball Progressions	Take Ons	Step Ins	Attempts at Goal	Goals
18	MUSOLE Ngambo	34	23	68%	0	0	0	12	2	17%	0	0	0	0	0
3	MWEEMBA Lushomo	32	21	66%	0	0	0	13	6	46%	0	0	0	0	0
4	SIAMFUKO Esther	48	29	60%	0	1	0	22	10	45%	0	0	0	0	0
5	ZULU Pauline	35	29	83%	0	1	0	11	6	55%	0	0	0	0	0
8	LUBANDJI Ochumba	24	16	67%	0	0	0	11	5	45%	0	0	0	1	0
9	MUPOPO Kabange	22	14	64%	0	0	0	5	2	40%	2	1	1	0	0
11	BANDA Barbra	18	12	67%	0	4	0	5	1	20%	4	1	3	4	1
13	TEMBO Martha	51	34	67%	0	1	0	22	13	59%	0	0	0	0	0
15	CHANDA Hellen	19	14	74%	0	0	0	3	2	67%	1	0	1	0	0
17	KUNDANANJI Racheal	22	11	50%	0	1	0	9	5	56%	3	2	1	3	0
20	NACHULA Racheal	5	1	20%	0	1	0	1	1	100%	0	0	0	0	0
14	CHILUFYA Prisca	14	6	43%	0	1	1	5	3	60%	3	2	1	0	0
21	WILOMBE Mary	14	11	79%	0	0	0	6	4	67%	0	0	0	0	0

In Possession - Offers & Receptions

Zambia

			Offer movement types						
#	Player	Total Offers	In Front	In Between	Out to In	In to Out	In Behind	No Movement	Offers Received
18	MUSOLE Ngambo	0	0	0	0	0	0	0	0
3	MWEEMBA Lushomo	2	0	1	0	0	0	1	1
4	SIAMFUKO Esther	9	6	1	0	0	0	2	6
5	ZULU Pauline	6	1	0	0	0	0	5	1
8	LUBANDJI Ochumba	4	0	3	0	0	0	1	1
9	MUPOPO Kabange	22	3	9	2	1	6	1	8
11	BANDA Barbra	35	0	3	1	2	21	8	10
13	TEMBO Martha	2	0	0	0	0	1	1	1
15	CHANDA Hellen	9	5	4	0	0	0	0	7
17	KUNDANANJI Racheal	24	2	11	2	3	4	2	8
20	NACHULA Racheal	12	0	4	0	0	5	3	1
14	CHILUFYA Prisca	30	5	2	2	5	4	12	10
21	WILOMBE Mary	4	3	1	0	0	0	0	2

In Possession - Distributions

Germany

#	Player	Passes Attempted	Passes Completed	Pass Completion %	Switches of Play	Crosses Attempted	Crosses Completed	Line Breaks Attempted	Line Breaks Completed	Line Break Completion %	Ball Progressions	Take Ons	Step Ins	Attempts at Goal	Goals
12	BERGER Ann-Katrin	45	38	84%	0	0	0	14	9	64%	0	0	0	0	0
3	HENDRICH Kathrin	17	17	100%	0	0	0	1	1	100%	0	0	0	0	0
4	SCHULZE SOLANO Bibiane	74	67	91%	1	0	0	18	14	78%	0	0	0	0	0
6	MINGE Janina	72	65	90%	0	0	0	26	23	88%	1	0	1	1	0
7	SCHUELLER Lea	17	14	82%	0	2	1	4	2	50%	2	1	1	5	2
9	NUESKEN Sjoeke	66	50	76%	0	0	0	19	14	74%	1	0	1	1	0
11	POPP Alexandra	40	30	75%	0	0	0	12	7	58%	0	0	0	0	0
15	GWINN Giulia	74	64	86%	1	8	2	25	19	76%	3	0	3	0	0
16	BRAND Jule	15	10	67%	0	1	0	5	3	60%	2	2	0	1	0
17	BUEHL Klara	32	31	97%	0	7	3	5	5	100%	1	1	0	5	1
19	RAUCH Felicitas	76	64	84%	0	1	1	24	17	71%	0	0	0	0	0
8	LOHMANN Sydney	20	19	95%	0	1	0	7	7	100%	1	1	0	0	0
10	FREIGANG Laura	7	6	86%	0	0	0	2	1	50%	2	2	0	2	0
13	DOORSOUN Sara	59	53	90%	1	0	0	15	12	80%	0	0	0	0	0
14	SENSS Elisa	6	6	100%	0	0	0	2	2	100%	0	0	0	1	1
18	ENDEMANN Vivien	18	15	83%	0	3	0	7	5	71%	4	2	2	3	0

In Possession - Offers & Receptions

Germany

			Offer movement types						
#	Player	Total Offers	In Front	In Between	Out to In	In to Out	In Behind	No Movement	Offers Received
12	BERGER Ann-Katrin	0	0	0	0	0	0	0	0
3	HENDRICH Kathrin	1	0	0	0	0	0	1	1
4	SCHULZE SOLANO Bibiane	12	2	0	0	0	0	10	6
6	MINGE Janina	49	32	10	2	1	0	4	32
7	SCHUELLER Lea	26	1	10	0	2	13	0	8
9	NUESKEN Sjoeke	79	17	34	3	7	14	4	36
11	POPP Alexandra	22	3	15	0	1	3	0	17
15	GWINN Giulia	28	10	4	1	0	5	8	19
16	BRAND Jule	13	0	1	0	0	4	8	4
17	BUEHL Klara	32	0	4	3	1	14	10	6
19	RAUCH Felicitas	15	6	1	1	0	1	6	7
8	LOHMANN Sydney	14	2	7	0	1	2	2	6
10	FREIGANG Laura	21	0	4	1	2	10	4	5
13	DOORSOUN Sara	5	1	0	0	0	0	4	2
14	SENSS Elisa	14	4	6	1	2	0	1	4
18	ENDEMANN Vivien	5	1	0	0	0	4	0	2

FIFA[®]
W-OFT 2024

INDIVIDUAL DATA OUT OF POSSESSION

Zambia 1 - 4 Germany

Out of Possession

Zambia

#	Player	Tackles Made / Won	Blocks	Interceptions	Pressing Direct	Pressing Indirect	Duels Won - Aerial	Duels Won - Physical	Possession Contests won	Clearances	Loose Ball Receptions	Pushing On	Pushing On into Pressing	Possession Regains	Possession Interrupted
18	MUSOLE Ngambo	0 / 0	0	0	0	0	0	0	0	0	9	0	0	17	0
3	MWEEMBA Lushomo	2 / 1	5	0	6	24	0	0	0	9	5	20	5	4	9
4	SIAMFUKO Esther	4 / 1	5	0	3	17	1	0	1	7	6	42	9	4	8
5	ZULU Pauline	7 / 3	4	1	1	7	1	0	1	8	13	14	1	13	4
8	LUBANDJI Ochumba	5 / 2	3	0	3	11	2	0	2	4	7	3	1	5	3
9	MUPOPO Kabange	1 / 0	2	1	0	32	1	0	1	2	6	30	14	3	3
11	BANDA Barbra	0 / 0	2	0	1	28	0	0	0	0	2	23	10	1	0
13	TEMBO Martha	8 / 2	4	0	7	12	0	0	0	4	10	15	4	6	4
15	CHANDA Hellen	8 / 4	3	0	9	10	0	0	0	1	8	19	5	6	2
17	KUNDANANJI Racheal	5 / 1	1	0	9	18	1	0	2	0	8	21	10	2	1
20	NACHULA Racheal	0 / 0	1	0	0	16	0	0	0	0	2	12	7	1	0
14	CHILUFYA Prisca	2 / 0	2	0	2	5	1	0	1	2	7	11	3	1	3
21	WILOMBE Mary	0 / 0	0	1	0	5	0	0	0	1	4	5	0	2	0

Out of Possession

Germany

#	Player	Tackles Made / Won	Blocks	Interceptions	Pressing Direct	Pressing Indirect	Duels Won - Aerial	Duels Won - Physical	Possession Contests won	Clearances	Loose Ball Receptions	Pushing On	Pushing On into Pressing	Possession Regains	Possession Interrupted
12	BERGER Ann-Katrin	0 / 0	0	0	0	0	0	0	0	1	4	0	0	13	0
3	HENDRICH Kathrin	0 / 0	0	0	0	0	0	0	0	1	1	0	0	1	0
4	SCHULZE SOLANO Bibiane	0 / 0	4	1	1	1	0	0	0	8	5	5	0	8	5
6	MINGE Janina	0 / 0	0	1	3	7	5	0	6	16	10	4	2	12	10
7	SCHUELLER Lea	1 / 0	0	0	0	6	0	0	0	0	5	1	0	0	1
9	NUESKEN Sjoeke	3 / 2	2	0	10	12	0	0	0	1	8	10	6	3	1
11	POPP Alexandra	2 / 0	2	0	3	7	3	0	3	0	7	3	1	2	1
15	GWINN Giulia	3 / 2	8	2	6	7	0	0	0	2	8	5	0	6	4
16	BRAND Jule	1 / 1	2	0	1	6	0	0	1	0	6	3	3	1	1
17	BUEHL Klara	2 / 1	2	0	7	21	0	0	0	0	11	10	7	2	1
19	RAUCH Felicitas	6 / 2	10	0	7	4	2	0	2	7	7	20	2	10	8
8	LOHMANN Sydney	1 / 0	0	0	0	3	0	0	0	0	5	3	1	0	1
10	FREIGANG Laura	0 / 0	0	0	0	5	0	0	0	0	1	1	0	0	0
13	DOORSOUN Sara	1 / 0	1	3	2	2	0	0	0	4	13	2	1	4	2
14	SENSS Elisa	0 / 0	0	0	0	2	0	0	0	0	2	0	0	0	0
18	ENDEMANN Vivien	2 / 1	1	0	0	4	0	0	1	0	5	2	2	1	1

FIFA[®]
W-OFT 2024

INDIVIDUAL DATA PHYSICAL

Zambia 1 - 4 Germany

Physical Data

Zambia

#	Player	Total Distance (m)	Zone 1: 0-7 km/h (m)	Zone 2: 7-15 km/h (m)	Zone 3: 15-20 km/h (m)	Zone 4: 20-25 km/h (m)	Zone 5: 25+ km/h (m)	High Speed Runs (Zone 4)	Sprints (Zone 5)	Top Speed (km/h)
18	MUSOLE Ngambo	5230.2	4255.2	916.0	59.1	0	0	0	0	19.0
3	MWEEMBA Lushomo	9579.9	3746.7	4357.9	1055.7	409.0	10.7	46.0	2.0	25.9
4	SIAMFUKO Esther	11042.6	3631.5	5661.3	1415.0	327.5	7.2	32.0	1.0	26.2
5	ZULU Pauline	9898.2	4341.3	4126.8	979.2	388.8	62.0	40.0	7.0	27.3
8	LUBANDJI Ochumba	10939.3	4368.2	4893.9	1421.0	256.2	0	23.0	0	23.6
9	MUPOPO Kabange	11913.7	4101.9	5207.1	1684.3	756.1	164.1	78.0	16.0	28.4
11	BANDA Barbra	8984.4	4161.1	2792.4	929.7	719.0	382.2	97.0	31.0	31.4
13	TEMBO Martha	10262.8	3917.8	4696.6	1150.8	408.1	89.5	44.0	6.0	26.5
15	CHANDA Hellen	7015.6	2796.6	3058.4	941.2	212.3	7.1	24.0	1.0	26.1
17	KUNDANANJI Racheal	12326.4	4829.0	4813.0	1644.9	726.5	313.0	86.0	21.0	32.7
20	NACHULA Racheal	5760.2	1971.8	2318.6	974.5	397.8	97.5	39.0	10.0	27.5
14	CHILUFYA Prisca	6506.3	2140.5	2676.0	1122.8	489.6	77.5	54.0	6.0	29.2
21	WILOMBE Mary	3974.9	1281.6	1862.9	757.4	73.0	0	12.0	0	23.1

Physical Data

Germany

#	Player	Total Distance (m)	Zone 1: 0-7 km/h (m)	Zone 2: 7-15 km/h (m)	Zone 3: 15-20 km/h (m)	Zone 4: 20-25 km/h (m)	Zone 5: 25+ km/h (m)	High Speed Runs (Zone 4)	Sprints (Zone 5)	Top Speed (km/h)
12	BERGER Ann-Katrin	5754.4	4470.9	1130.2	150.5	2.8	0	1.0	0	20.2
3	HENDRICH Kathrin	1952.5	818.9	897.4	194.5	34.8	7.1	3.0	1.0	25.5
4	SCHULZE SOLANO Bibiane	10635.4	3927.2	5410.2	967.2	258.5	72.2	39.0	6.0	28.0
6	MINGE Janina	11809.4	4293.5	5901.8	1276.0	323.9	14.2	30.0	2.0	25.7
7	SCHUELLER Lea	6725.8	3335.8	2265.8	692.5	354.4	77.4	47.0	7.0	29.1
9	NUESKEN Sjoeke	10501.0	3620.2	5349.2	1219.4	305.2	7.0	37.0	1.0	25.2
11	POPP Alexandra	7608.5	3189.5	3495.1	713.4	210.5	0	17.0	0	24.9
15	GWINN Giulia	12428.2	4044.3	6273.9	1599.1	457.1	53.8	40.0	5.0	27.1
16	BRAND Jule	5243.0	2568.8	1750.4	572.4	243.2	108.2	36.0	8.0	29.0
17	BUEHL Klara	11709.6	3986.0	5175.4	1769.1	662.3	116.8	80.0	11.0	28.1
19	RAUCH Felicitas	11885.7	4258.0	5804.8	1326.3	456.9	39.7	44.0	6.0	27.8
8	LOHMANN Sydney	3863.7	1044.7	2053.8	603.0	158.6	3.5	21.0	1.0	25.4
10	FREIGANG Laura	3556.2	1151.1	1534.4	691.2	157.2	22.3	17.0	1.0	27.8
13	DOORSOUN Sara	8210.1	3470.6	3593.6	784.3	245.4	116.1	31.0	8.0	28.9
14	SENSS Elisa	1430.1	308.9	780.5	246.4	94.3	0	8.0	0	23.3
18	ENDEMANN Vivien	5497.6	2321.7	1968.8	692.2	423.8	91.1	43.0	7.0	29.5

FIFA[®]
W-OFT 2024